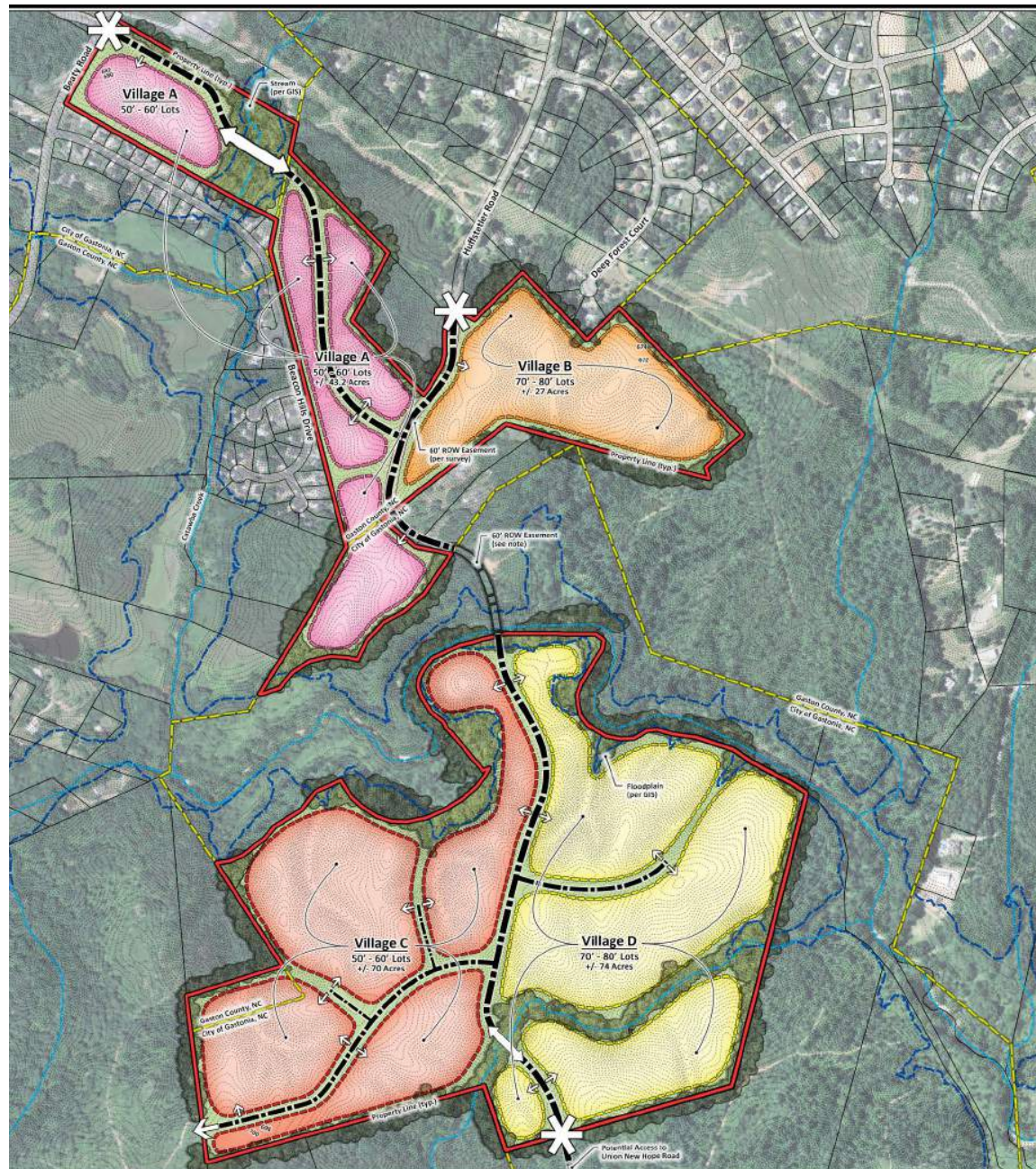




FORDE BRITT
 THE NICHOLS COMPANY
 (O) 704.373.9797 (F) 704.373.9798
 Forde@thenicholscompany.com
 www.thenicholscompany.com
 600 Queens Rd, Charlotte, NC 28207



Springhaven

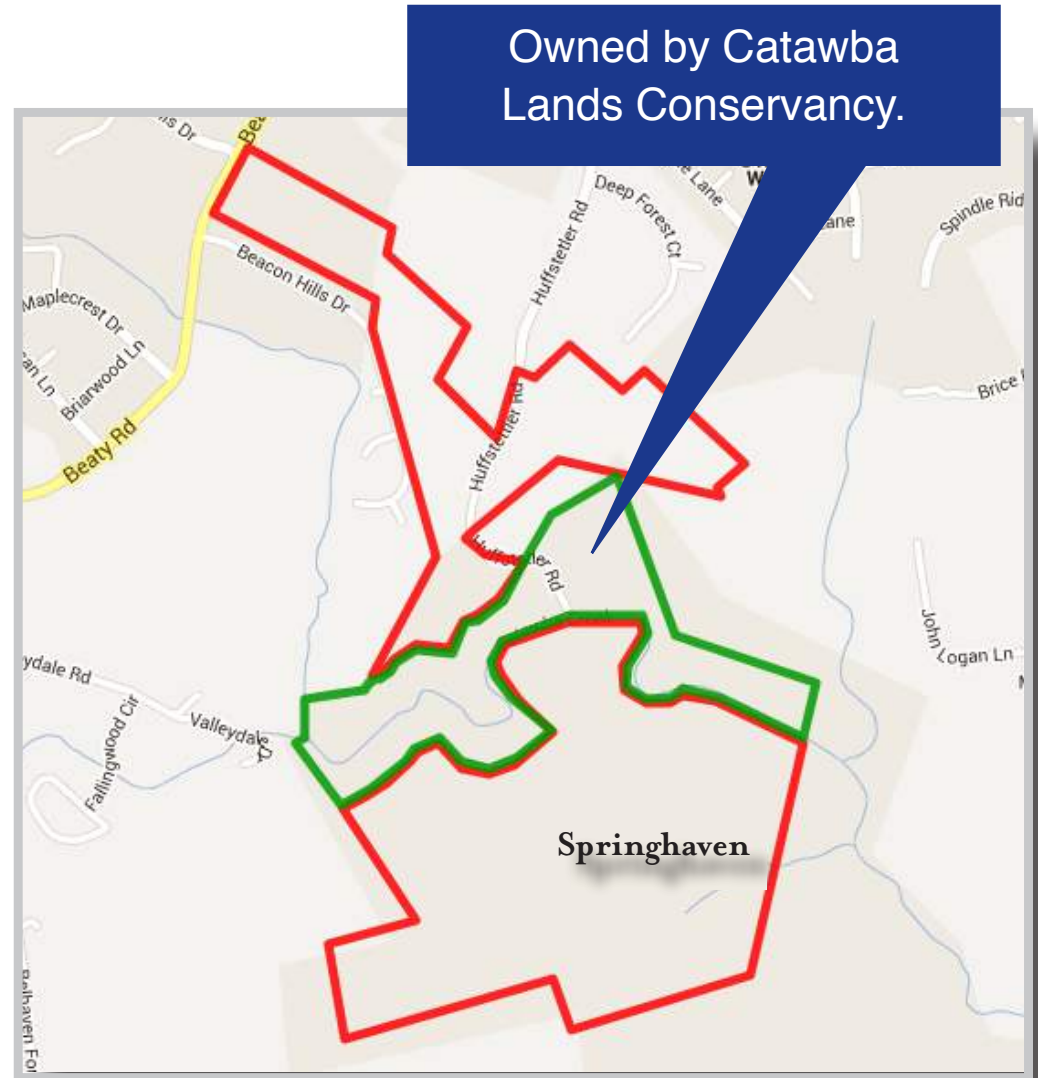
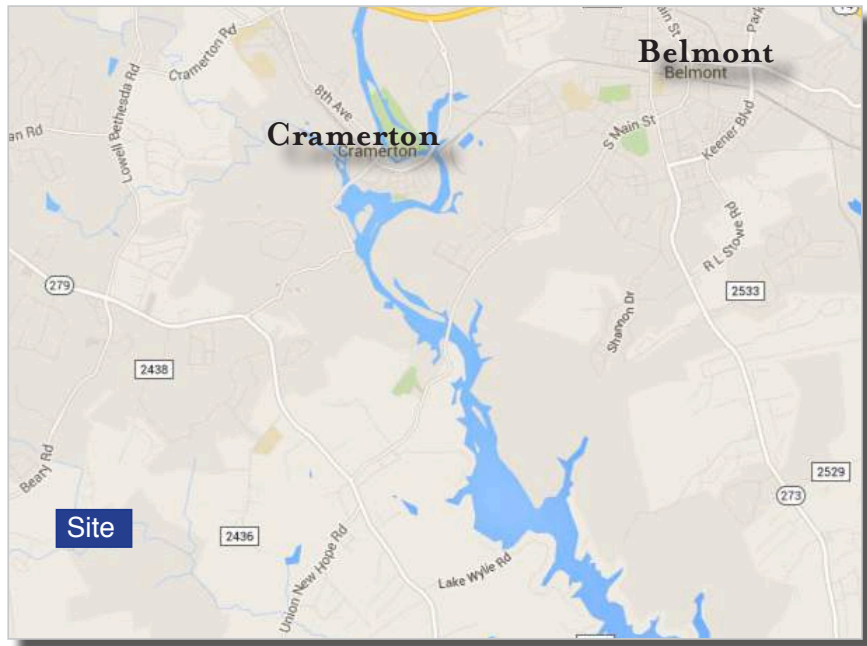
GASTONIA, NC

LOCATION:

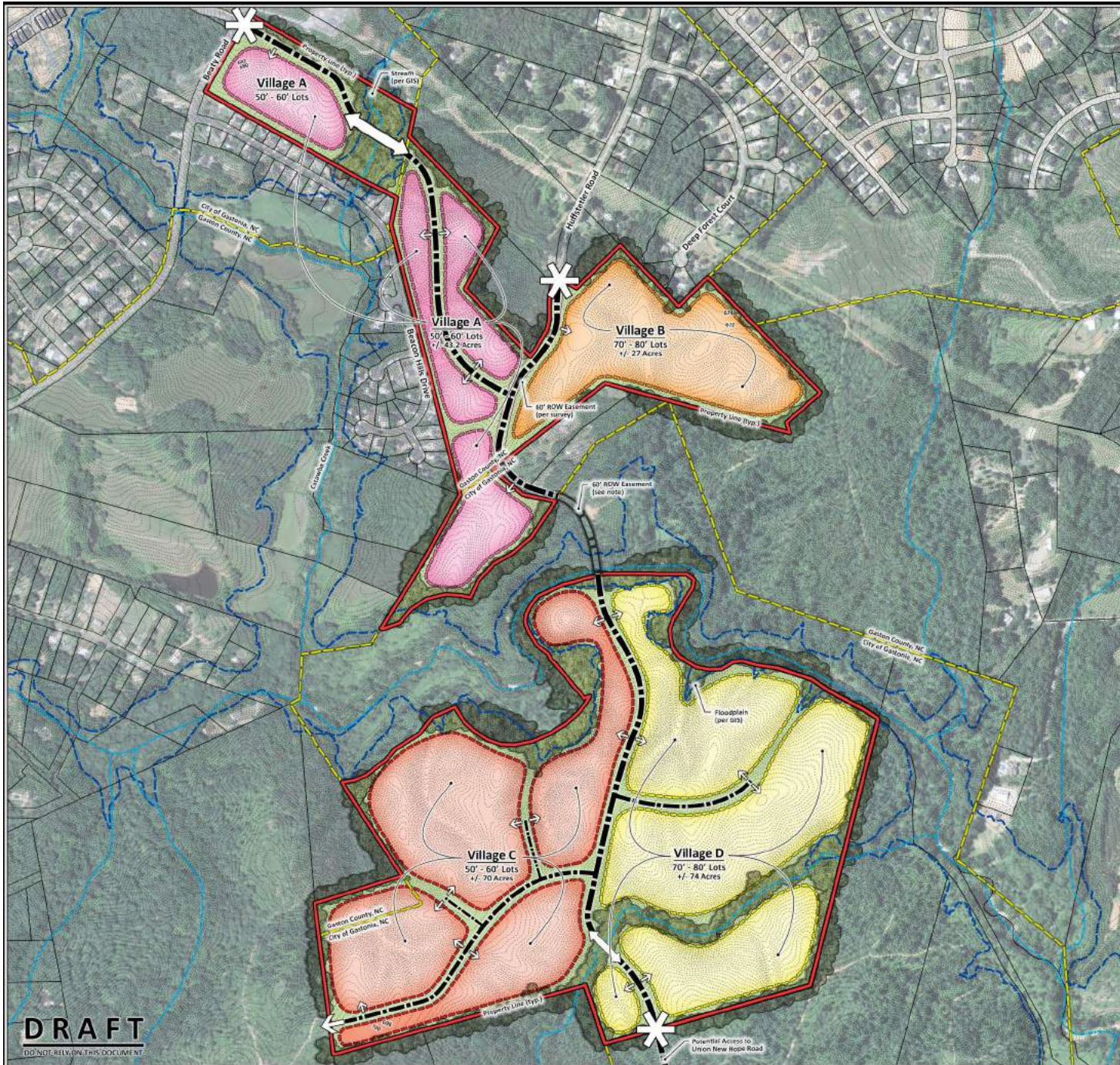
Via 85 South, take Exit 22 and head south on Redbud Road. Turn Left on S. New Hope Road and then Right on Beaty Road. The site will be on your left after less than 1 mile, across from the entrance to Catawba Hills.

LAND ATTRIBUTES:

- Total Acres: +/- 214ac
- Forestview and South Point HS districts



PRELIMINARY BUBBLE PLAN

VICINITY MAP

Tax Parcels:

- 3573331811
- 3573253621
- 3573361925
- 3573183266

Total Acreage: +/- 214 acres

Location:

City of Gastonia, NC
Gaston County, NC

Zoning:

R-1 (Gaston Co.)

RS-12 & PRD (City of Gastonia)

LOT DETAIL

Total Potential Units:

+/- 495 Lots

Village A: +/- 43 Ac (50-60' Wide Lots)

Village B: +/- 27 Ac (70-80' Wide Lots)

Village C: +/- 70 Ac (50-60' Wide Lots)

Village D: +/- 74 Ac (70-80 Wide Lots)

GASTON COUNTY

Located in the Piedmont area of North Carolina, Gaston County is approximately 20 minutes west of Charlotte. It is the third-largest county in the Charlotte region and offers convenient access to the City of Charlotte and Charlotte Douglas International Airport via Interstate 85 and US Highway 321. In just a 4 hour drive, residents of Gaston County can find themselves along the beaches of Charleston, SC or in the Great Smoky Mountains on the North Carolina/Tennessee border.

Rich in history, Gaston County originally found success in textile production and still remains the top county in cotton consumption and in the number of operating spindles. Today, the county is home to a number of businesses in a variety of manufacturing industries.



Stowe Botanical Gardens



Rendering - Chronicle Mill

AREA ATTRACTIONS:

- Stowe Botanical Gardens
- Belmont Abbey College
- Lake Wylie/Catawba River
- The Chronicle Mill Historic Stowe Mill
- Seven Oaks Nature Preserve -- Thread Trail
- Crowders Mountain State Park
- Christmastown, USA- in nearby McAdenville
- US National Whitewater Center



FORDE BRITT | The Nichols Company | (O) 704.373.9797 | (F) 704.373.9798
Forde@thenicholscompany.com | www.thenicholscompany.com | 600 Queens Rd, Charlotte, NC 28207