

**Josh Beaver**  
The Nichols Company  
704.373.9797 (Office) • 704.373.9798 (Fax)  
Josh@thenicholscompany.com  
www.thenicholscompany.com  
600 Queens Rd, Charlotte, NC 28207

**Available**  
Urban Infill  
Land For Sale



# Trinity Episcopal School Land

East 7th Street at I-277 | Charlotte, NC 28202

## LOCATION

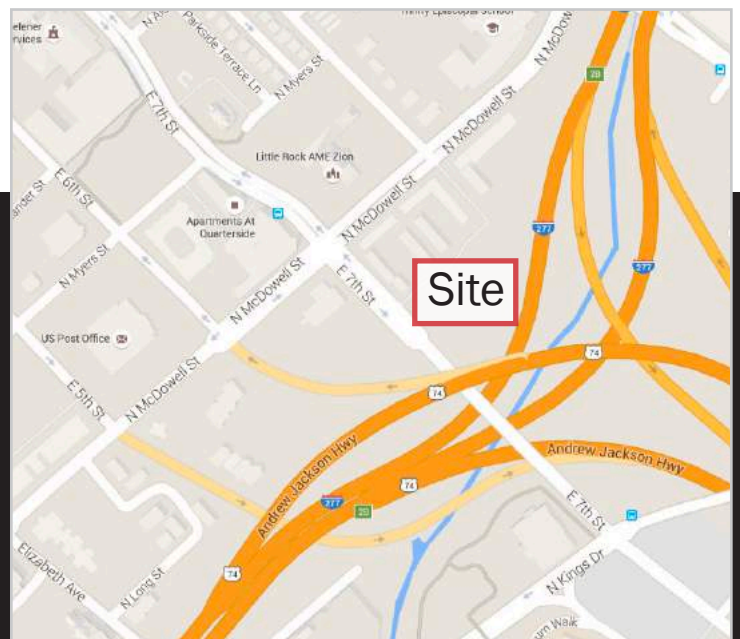


## ABOUT

Located near the North McDowell Street and East 7th Street interchange, this +/- 1.062 acre property is an ideal location for infill development. It is convenient to NoDa, Uptown, Midtown and the interstates.

## SITE ATTRIBUTES

- +/- 1.062 Acres
- Zoned MUDD
- Parcel ID: 08010175
- Call for Pricing

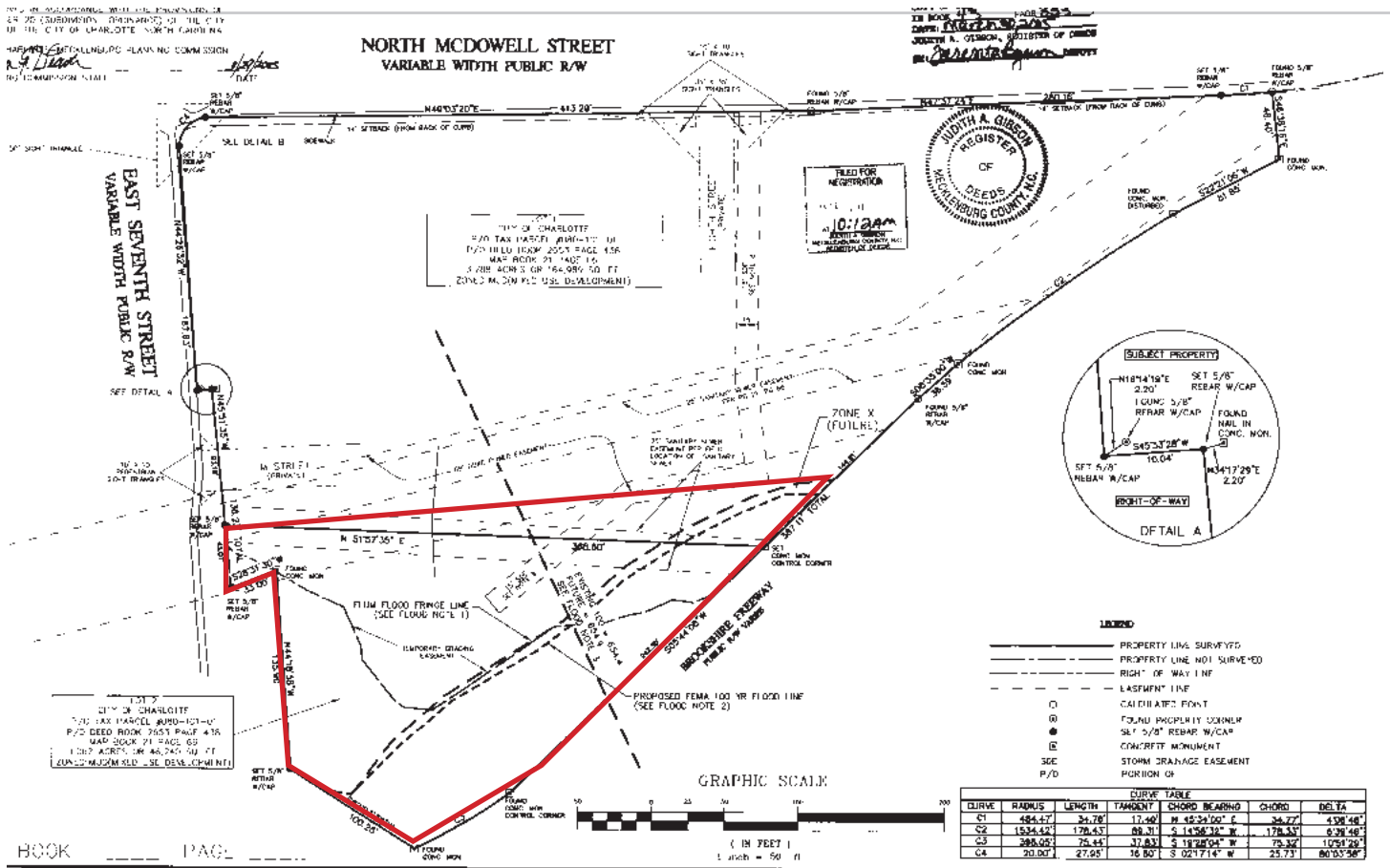




# SURVEY

THIS SURVEY WAS MADE IN ACCORDANCE WITH THE PROVISIONS OF THE  
 1972 CONSTITUTION, ORDINANCE NO. 101 OF THE CITY  
 OF THE CITY OF CHARLOTTE, NORTH CAROLINA  
 HARRIS, J. D. HARRIS, PLANNING COMM. DESIGN  
 10/12/2008 10:12 AM  
 10/12/2008 10:12 AM

## NORTH MCDOWELL STREET VARIABLE WIDTH PUBLIC R/W



For more information please contact:  
 Josh Beaver  
 Josh@TheNicholsCompany.com  
 704.373.9797



This information has been obtained from sources believed to be reliable. While we do not doubt its accuracy, we have not verified it and make no guarantee, warranty or representation to independently confirm its accuracy and completeness.