



FORDE BRITT
THE NICHOLS COMPANY
(O) 704.373.9797 (F) 704.373.9798
Forde@thenicholscompany.com
www.thenicholscompany.com
600 Queens Rd, Charlotte, NC 28207

Weddington Road

CONCORD, NC

LOCATION:

Located in close proximity to Concord Mills, Charlotte Motor Speedway and numerous residential and retail developments, this 2.33 acre land parcel is also within easy access of I-85.

LAND ATTRIBUTES:

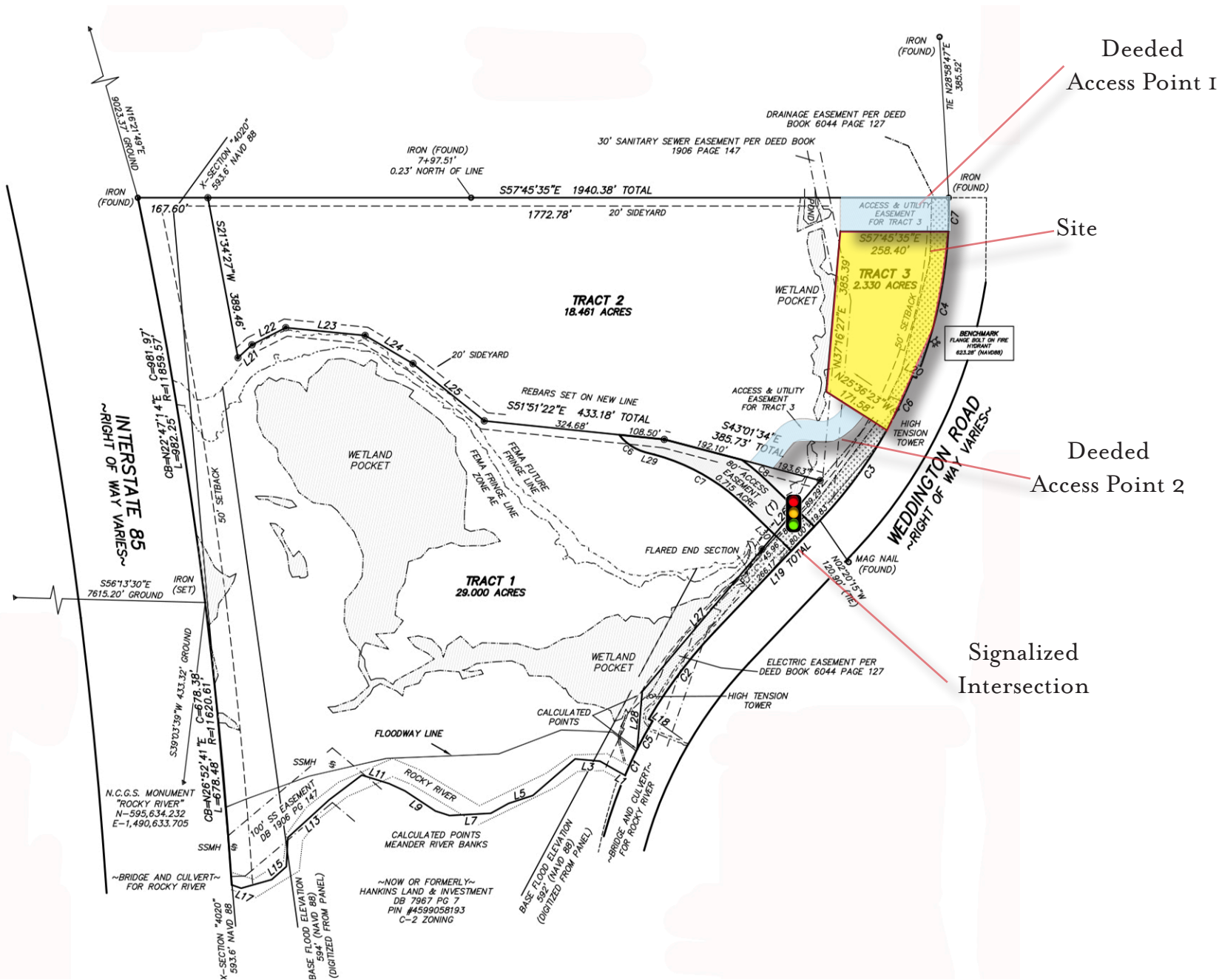
- 2.33 Acres
- Zoning: C-2 (City of Concord)
- Access from light at Waterlynn Dr.
- Two deeded access points
- Sale Price: \$700,000



ACCESS POINTS:

- RR - Right In, Right Out
- FM - Full Movement

SITE PLAN:



CONCORD :

Located in Cabarrus County, the City of Concord is approximately 25 miles from Charlotte and is easily accessed via Interstate 85. Since 1990, Concord has grown to a population of almost 84,000. The area offers a diverse economic base comprised of distribution, manufacturing, racing and professional services.
<http://www.concordnc.gov>

AREA ATTRACTIONS:

- Charlotte Motor Speedway
- Concord Mills Shopping Center
- Historic Downtown Concord
- Great Wolf Lodge
- Intimidators Baseball





FORDE BRITT | The Nichols Company | (O) 704.373.9797 | (F) 704.373.9798
Forde@thenicholscompany.com | www.thenicholscompany.com | 600 Queens Rd, Charlotte, NC 28207

