

Josh Beaver

The Nichols Company

704.373.9797 (Office) • 704.373.9798 (Fax)

josh@thenicholscompany.com

www.thenicholscompany.com

600 Queens Rd, Charlotte, NC 28207

Available
Retail For Lease



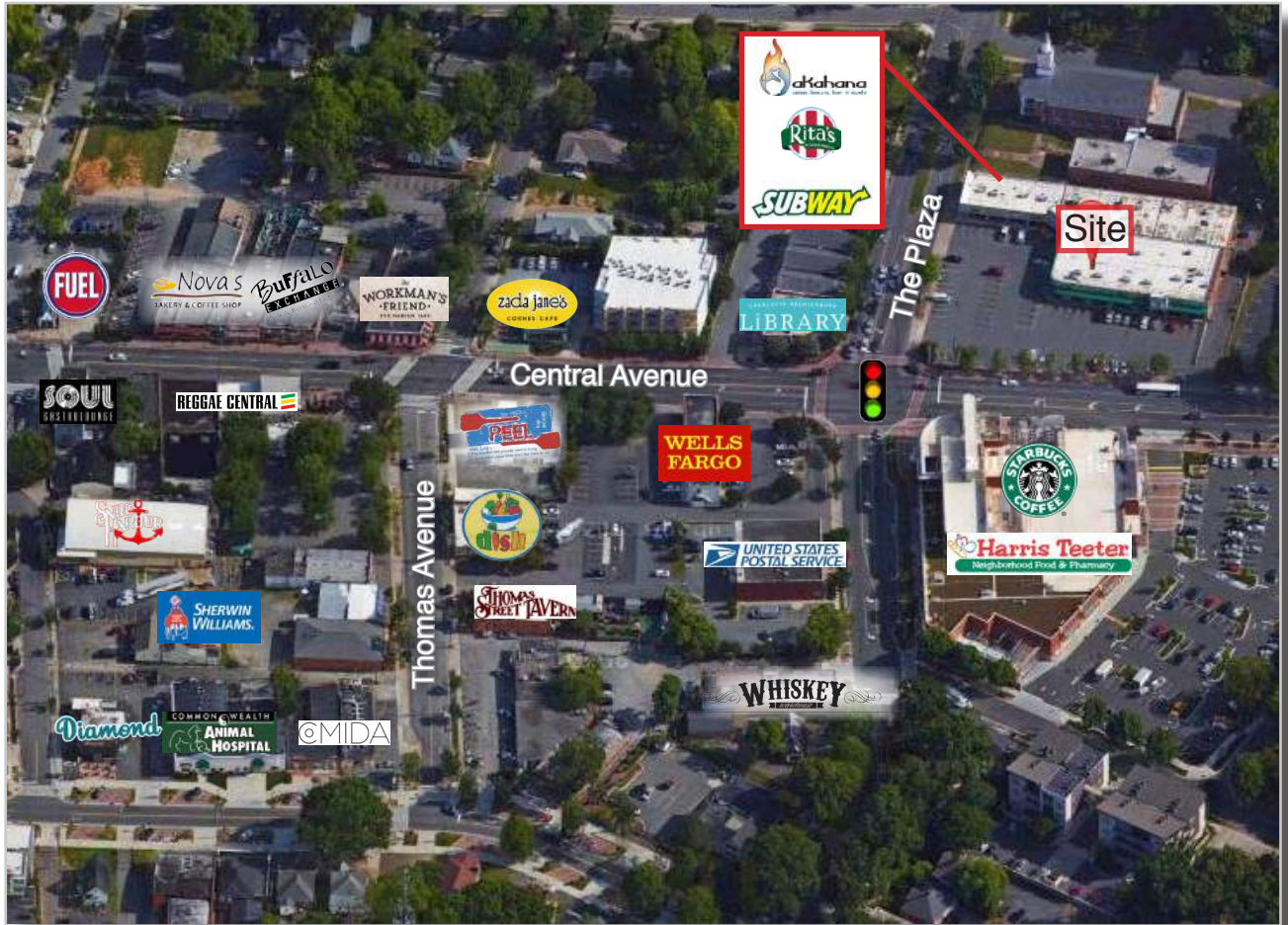
Midwood Corners

1308 The Plaza | Charlotte, NC 28205

Midwood Corners

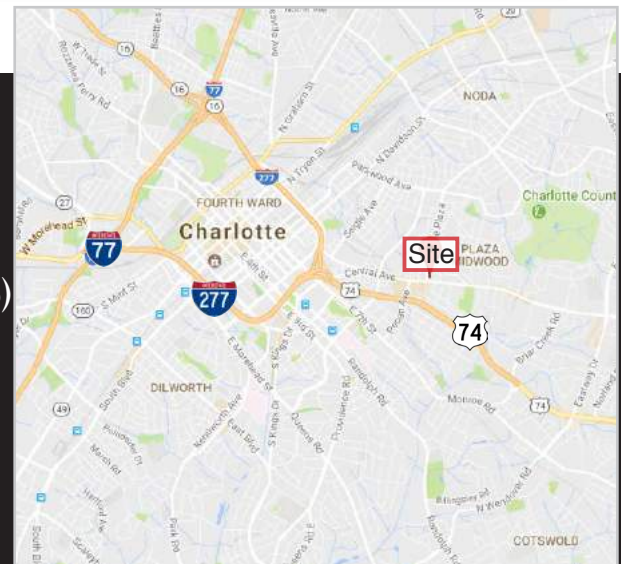
ABOUT

Midwood Corners is a +/- 22,841 SF retail center shadow anchored by Harris Teeter. Located at the intersection of Central Avenue and The Plaza in Plaza Midwood, the center offers excellent visibility as it is positioned along one of Charlotte's most heavily traveled thoroughfares into Uptown. It is within close proximity to numerous retail and restaurant establishments as well as Uptown and the interstates.



SITE ATTRIBUTES

- +/- 22,841 SF of total retail space
- +/- 1,025 SF Available
- 84 parking spaces (82 Regular, 2 Handicap)
- Zoning: B-2
- Lease Rate: \$35/SF NNN



ABOUT PLAZA MIDWOOD



Plaza Midwood is located about 1 mile East of Uptown Charlotte. Known for its eclectic vibe, it has a mix of art galleries, locally owned shops and restaurants. Recent years have seen its resurgence as a residential neighborhood as well, with numerous multi-family residential communities underway.



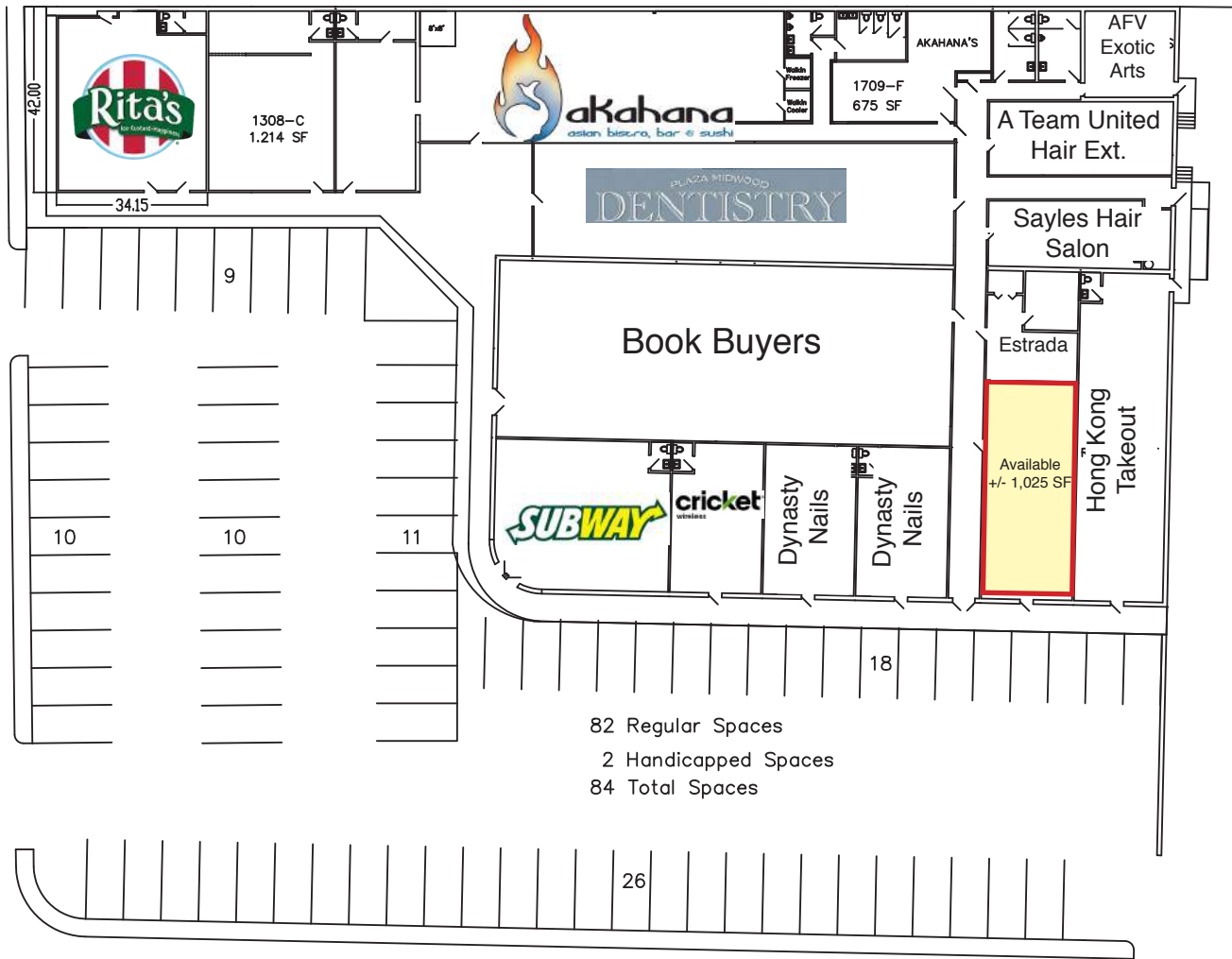
DEMOGRAPHICS

	1 Mile	3 Miles	5 Miles
Population	12,259	109,024	273,696
Daytime Population	16,792	214,751	414,421
Average HH Income	\$86,985	\$81,601	\$71,330

Traffic Counts: Est. 30,000 VPD along Central Avenue



SITE PLAN



Existing Tenants:

- Rita's Italian Ice
- Akahana's
- Midwood Dentistry
- Book Buyers
- Subway
- Cricket Store
- Dynasty Nails
- Estrada
- Hong Kong Takeout
- AFV Exotic Arts
- A Team United Hair Extensions
- Sayles Hair Salon

For more information please contact:

Josh Beaver
 Josh@TheNicholsCompany.com
 704.373.9797

This information has been obtained from sources believed to be reliable. While we do not doubt its accuracy, we have not verified it and make no guarantee, warranty or representation to independently confirm its accuracy and completeness.

