

John Hadley

The Nichols Company

704.373.9797 (Office) • 704.373.9798 (Fax)

jhadley@thenicholscompany.com

www.thenicholscompany.com

600 Queens Rd, Charlotte, NC 28207

Available

Office for
Sale or Lease

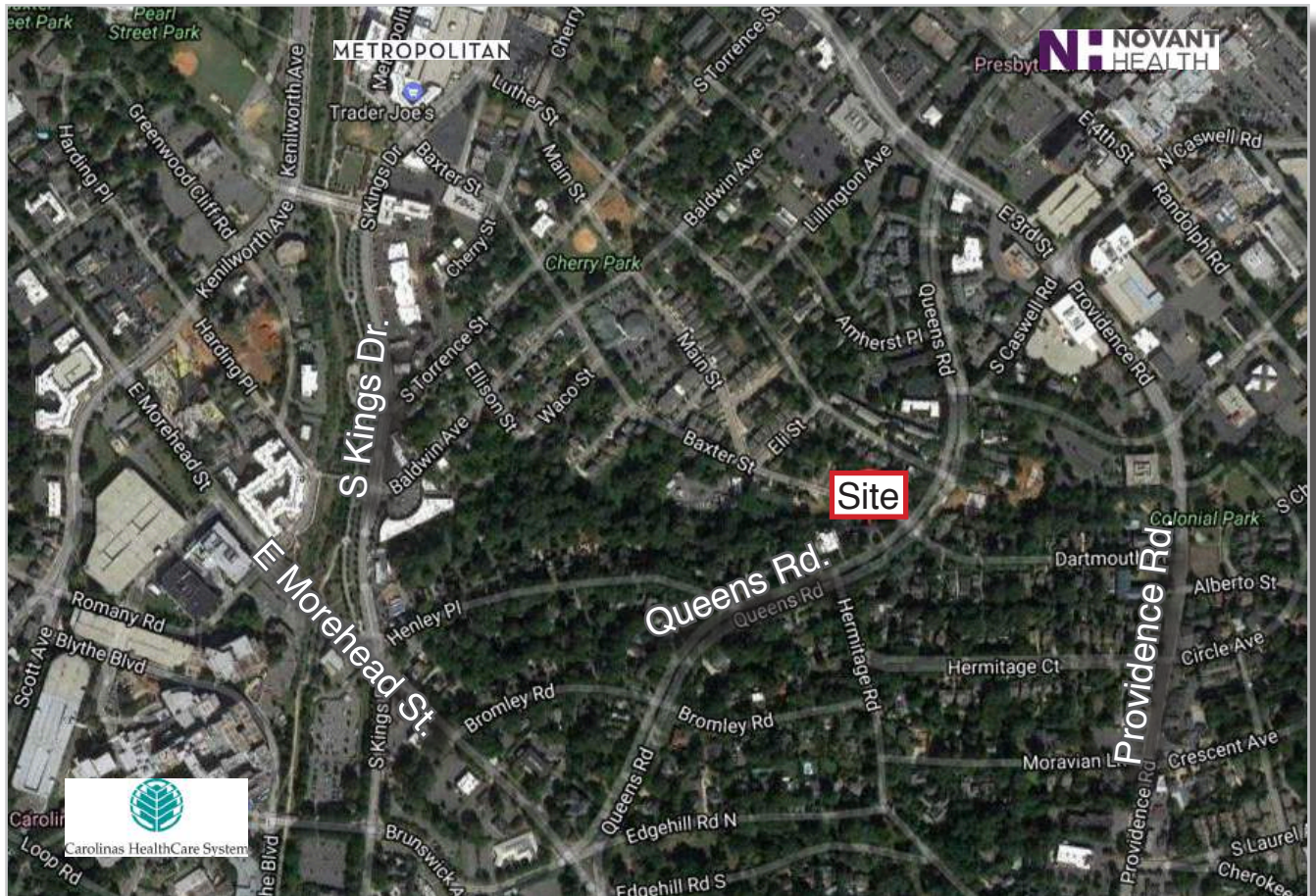


600 Queens Rd.

Charlotte, NC | 28207

ABOUT

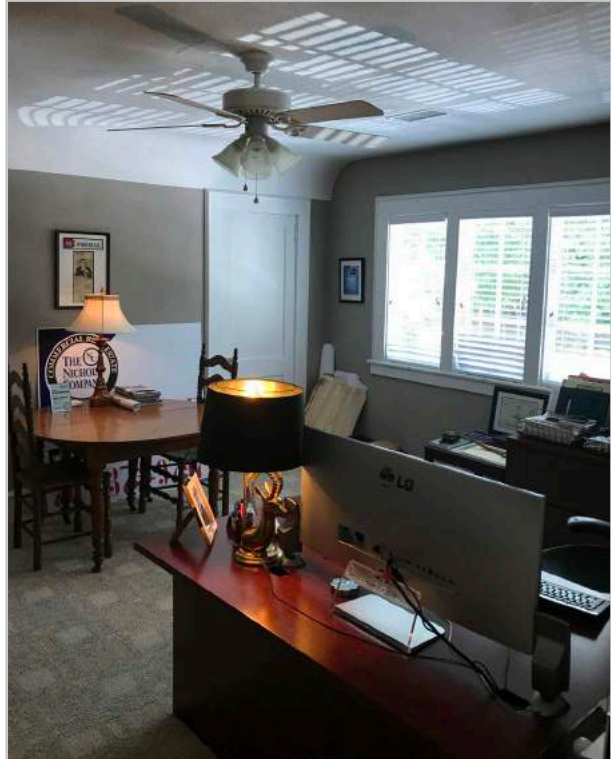
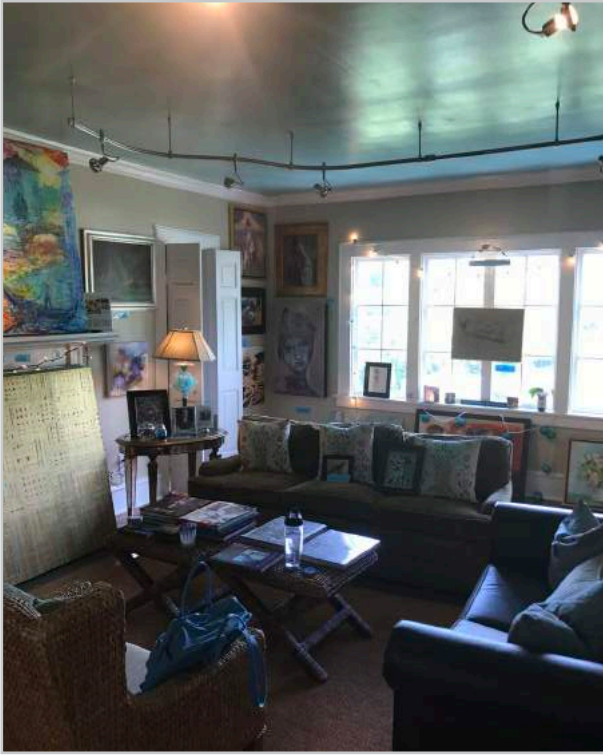
Located at the corner of Queens Rd. and Baxter St. in the Myers Park neighborhood, this three story +/- 5,567 SF office building is available for sale or lease. It is located within walking distance to restaurants and is in close proximity to Novant Presbyterian Hospital, Uptown and the interstates.



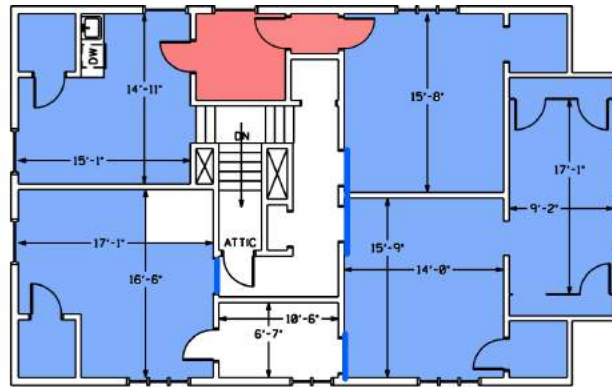
SITE ATTRIBUTES

- +/- 5,567 SF
- .583 Acres
- Zoning: R-22
- Three Stories - can be subdivided
- Sale Price: \$1,500,000
- Lease Rate: \$22/SF NNN

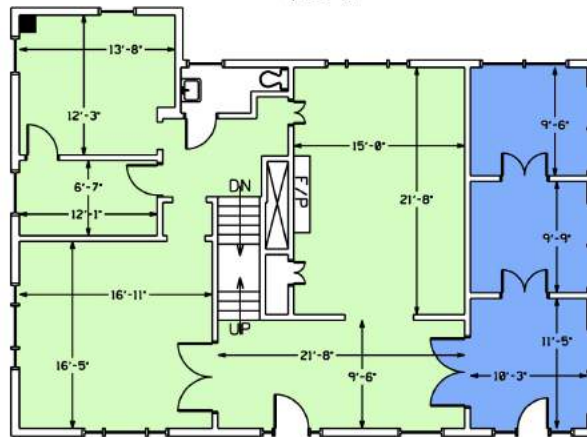
PHOTOS



FLOOR PLAN

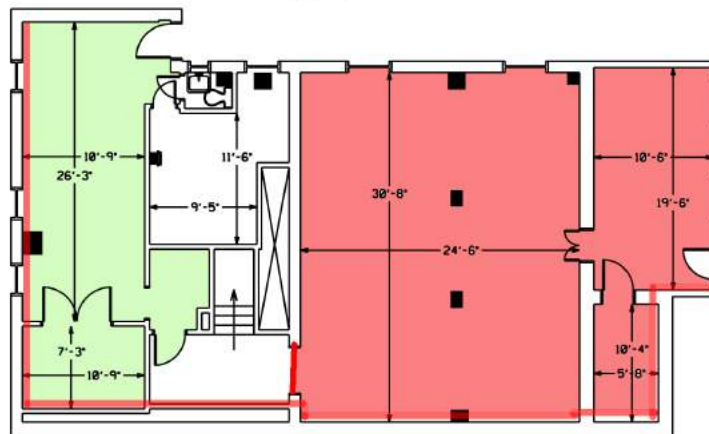


SECOND FLOOR
1,732 SF



FIRST FLOOR
1,763 SF

- TNC
- Sprock
- Quinter



BASEMENT
2,072 SF

600 QUEENS RD
5,567 TOTAL SF
USING EXTERIOR WALL
NO DEDUCTIONS FOR KNEE WALLS

For more information please contact:
John Hadley
Jhadley@thenicholscompany.com
704.373.9797

