

Josh Beaver

The Nichols Company

704.373.9797 (Office) • 704.373.9798 (Fax)

josh@thenicholscompany.com

www.thenicholscompany.com

600 Queens Rd, Charlotte, NC 28207

Available
Commercial Condo
For Sale



Atherton Lofts

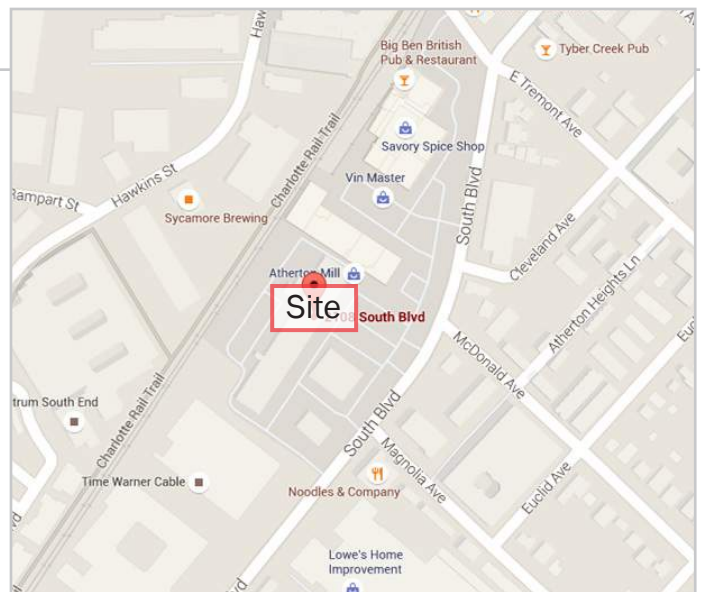
2108 South Blvd - Suite 107

Charlotte, NC 28203



LOCATION

Located right in the heart of South End, one of the most attractive submarkets in the Charlotte area, this property is on South Boulevard, less than 1.5 miles from Charlotte's center city.

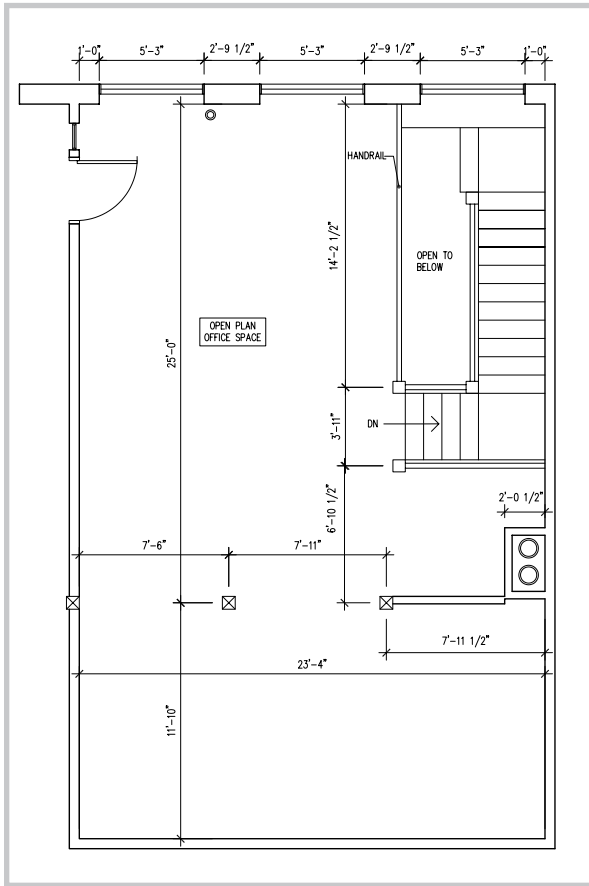


BUILDING ATTRIBUTES

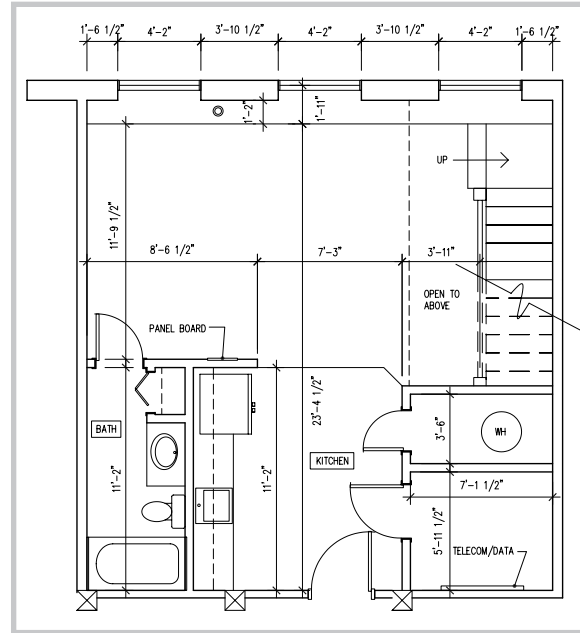
- Square Footage: 1,405 SF
- Zoning: UMUD
- Abundant Parking
- Secured Underground Parking Access
- Current Lease Details Available Upon Request
- Sale Price: \$400,000

FLOOR PLANS

The layout is perfect for a small office user.



Upper Floor



Lower Floor

SOUTHEND



Immediately south of Uptown, Charlotte's South End is a mix of old and new, contemporary and retro. This thriving community has seen a boom in growth over the past decade and now has more than 300 shops and restaurants and 2,400 housing units. South End offers historic charm with modern day conveniences.

www.historicsouthend.com

For more information please contact:
Josh Beaver
Josh@TheNicholsCompany.com
704.373.9797



This information has been obtained from sources believed to be reliable. While we do not doubt its accuracy, we have not verified it and make no guarantee, warranty or representation to independently confirm its accuracy and completeness.