

**Whitney Freeburn**

The Nichols Company

704.373.9797 (Office) 704.373.9798 (Fax)

whitney@thenicholscompany.com

www.thenicholscompany.com

600 Queens Rd, Charlotte, NC 28207

**Available**

Retail/Office

For Lease



**1212 Central Avenue**

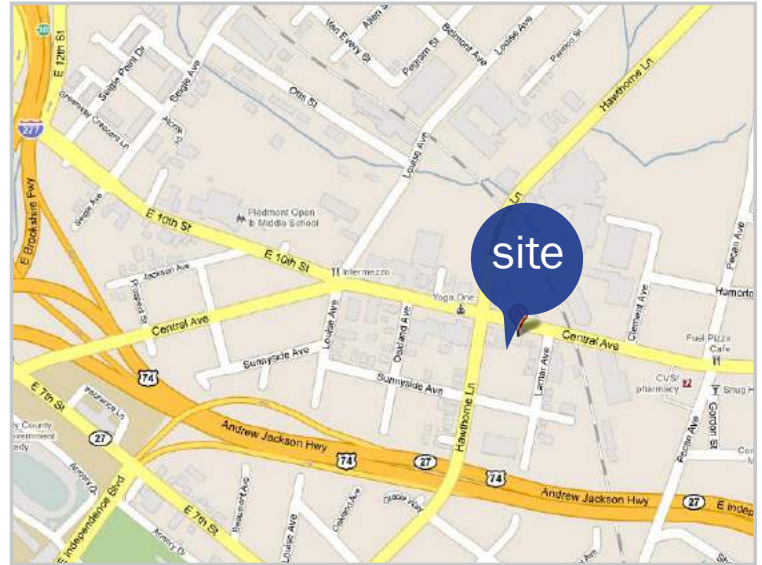
Charlotte, NC 28204

# Central Avenue



## SITE INFORMATION

Located in the heart of the Plaza-Midwood neighborhood, 1212 Central Avenue is well positioned at the intersection of Hawthorne Lane. The storefront is highly visible and stretches all the way up to the sidewalk. Parking is available behind the building with the potential for additional shared parking.

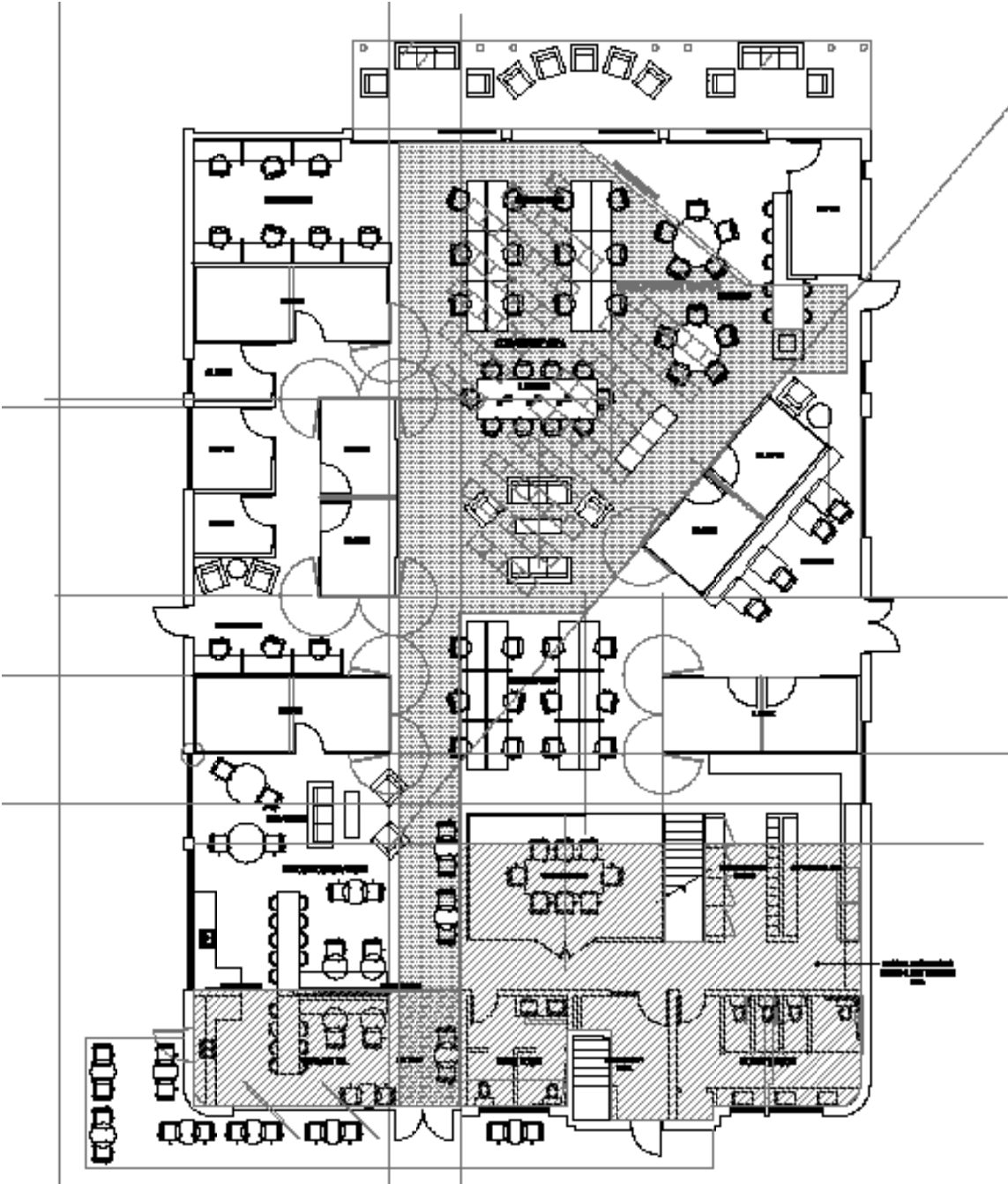


# 1212

## BUILDING ATTRIBUTES

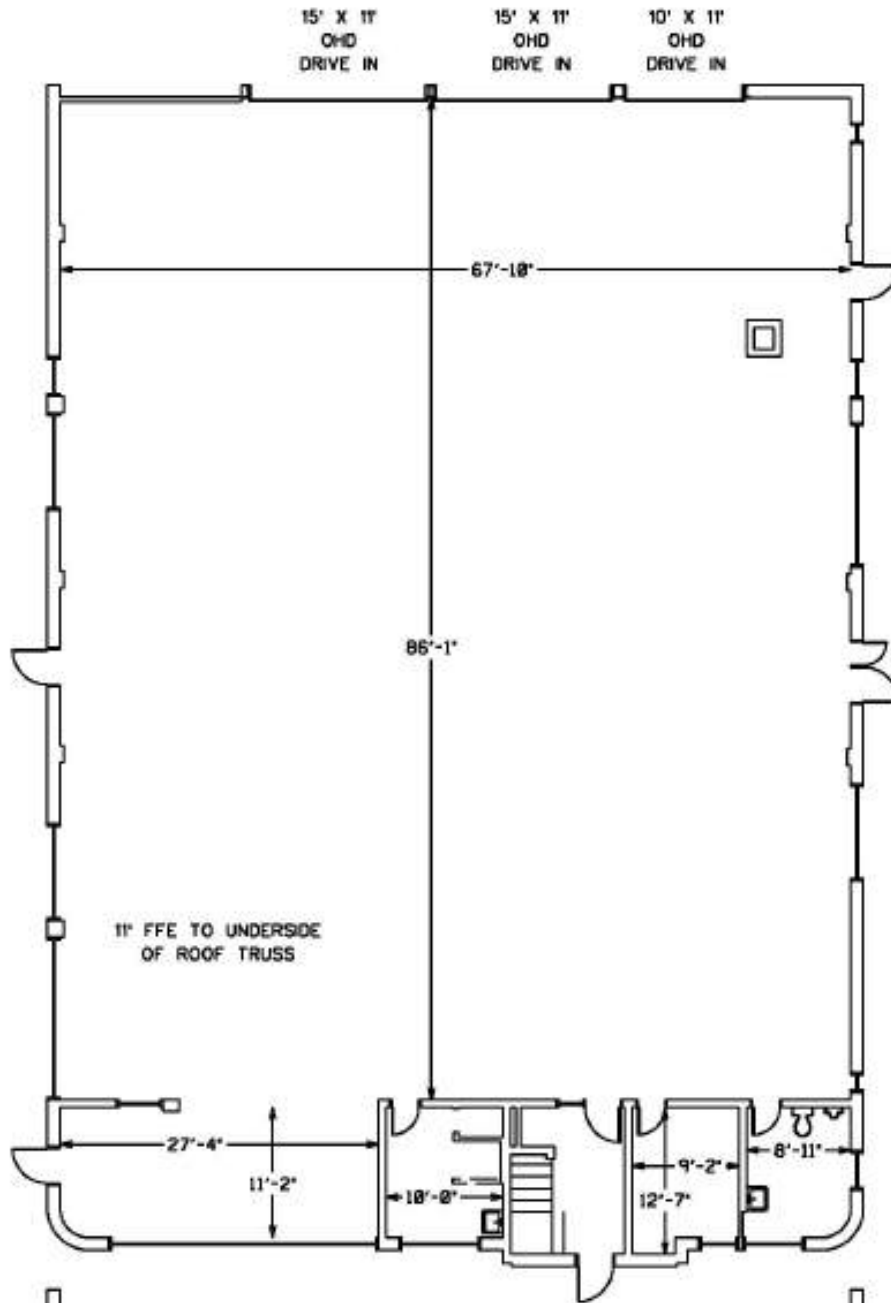
- Zoning: B-2 PED
- Square Footage: 921-7943 SF
- Plaza-Midwood Retail/Office
- Lease Rate: \$29-\$35/SF NNN

# PROPOSED FLOOR PLAN



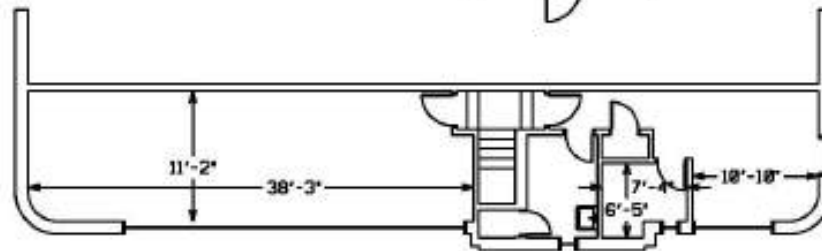
# First Floor

7,022 SF



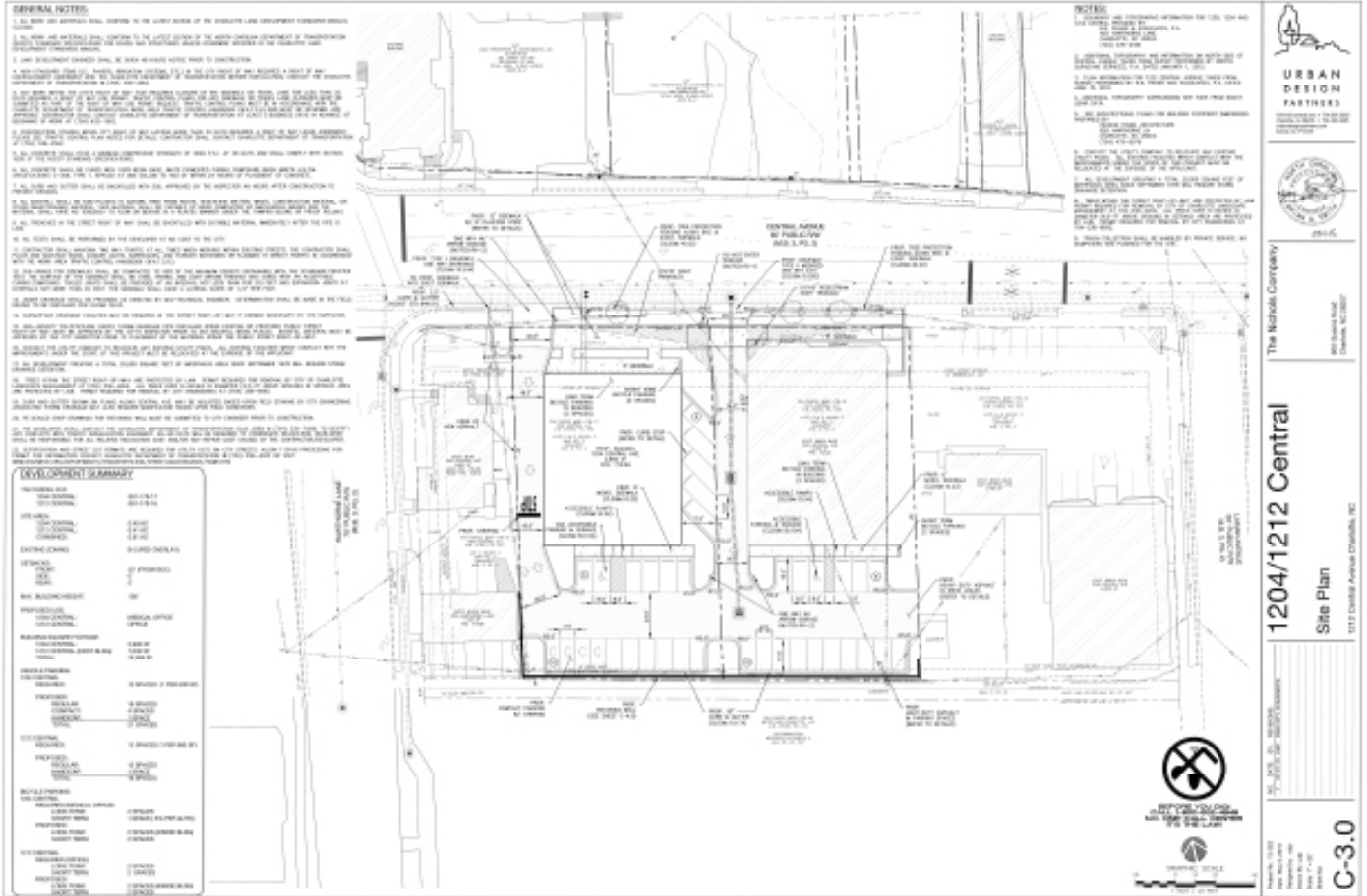
# Second Floor

921 SF

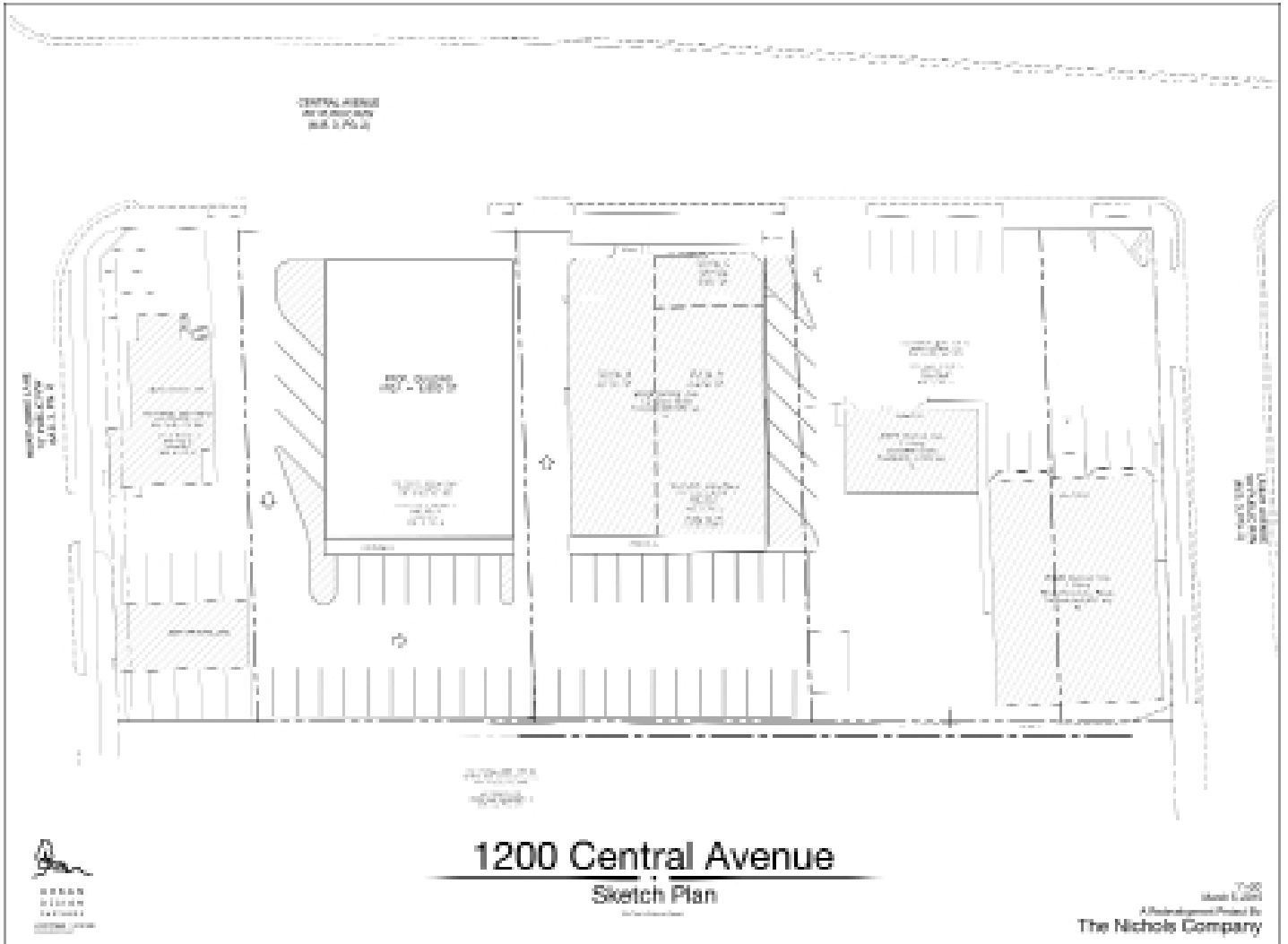


1212 CENTRAL AVE  
7,022 FIRST FLOOR  
921 SF SECOND FLOOR

# SITE PLAN



# PROPOSED PARKING PLAN



# LOCATION PHOTOS

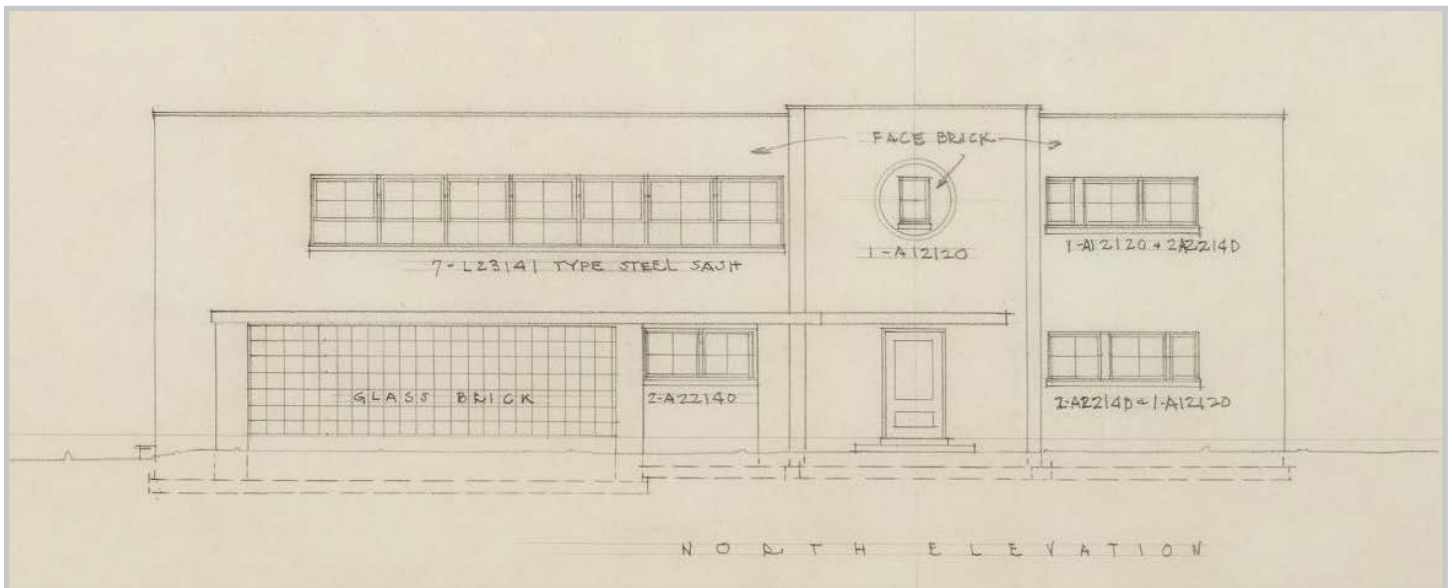
---



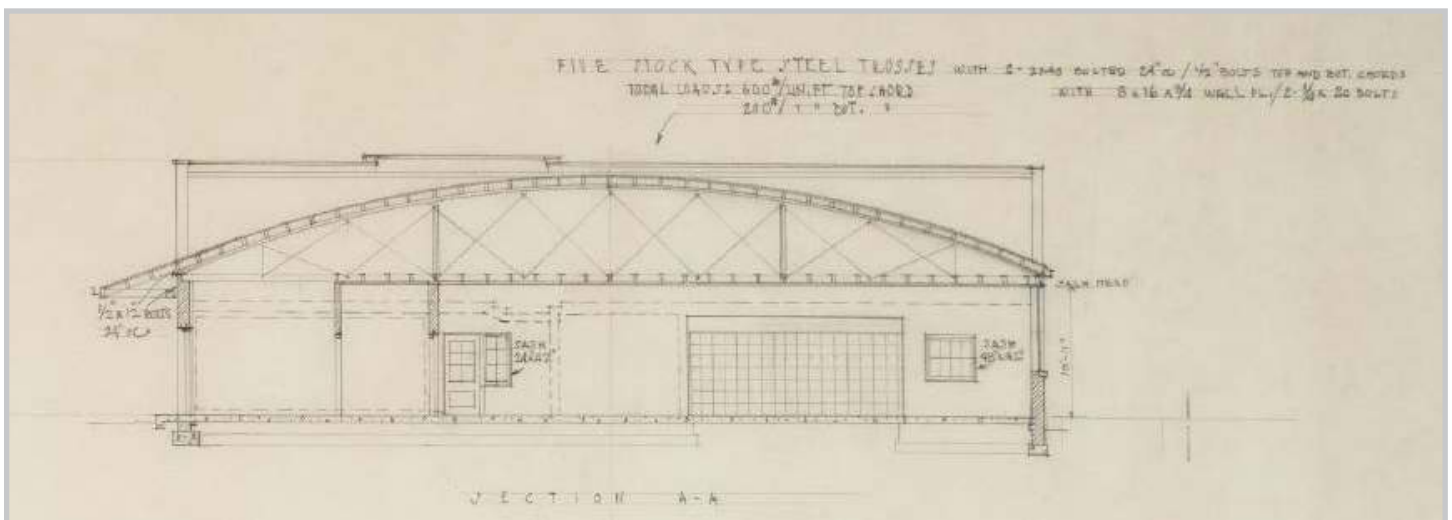
# ORIGINAL BLUE PRINTS

DATED	SCALE: $\frac{1}{8}$ INCH = 1 FOOT	PROJECT
8 MAY 45	ELEVATIONS AND SECTIONS	50.1
	QUEEN PIE CO. CHARLOTTE, N.C.	$\frac{2}{2}$
M E BOYER JR ARCHITECT		CHARLOTTE, N.C.

## FACADE

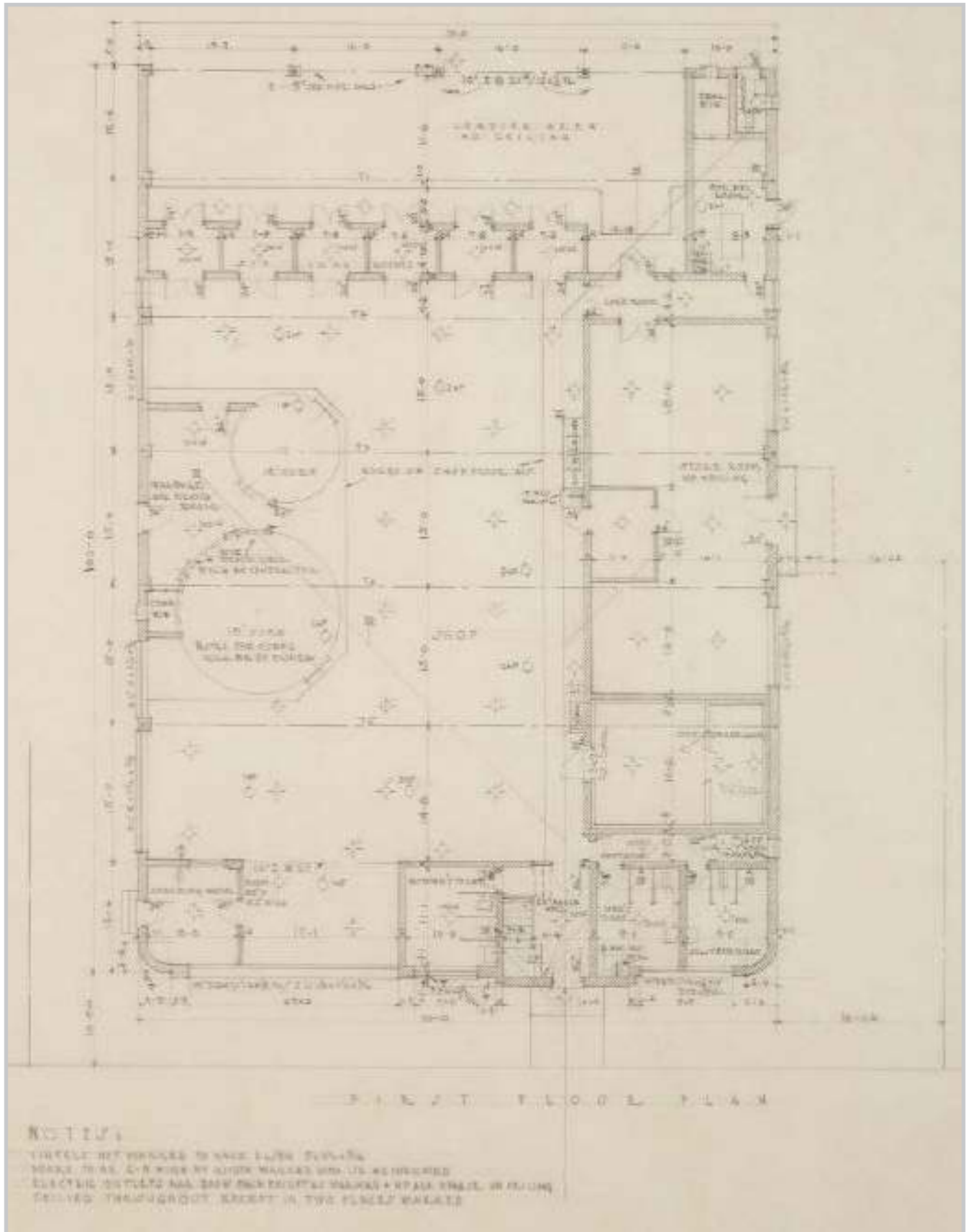


## CROSS SECTION

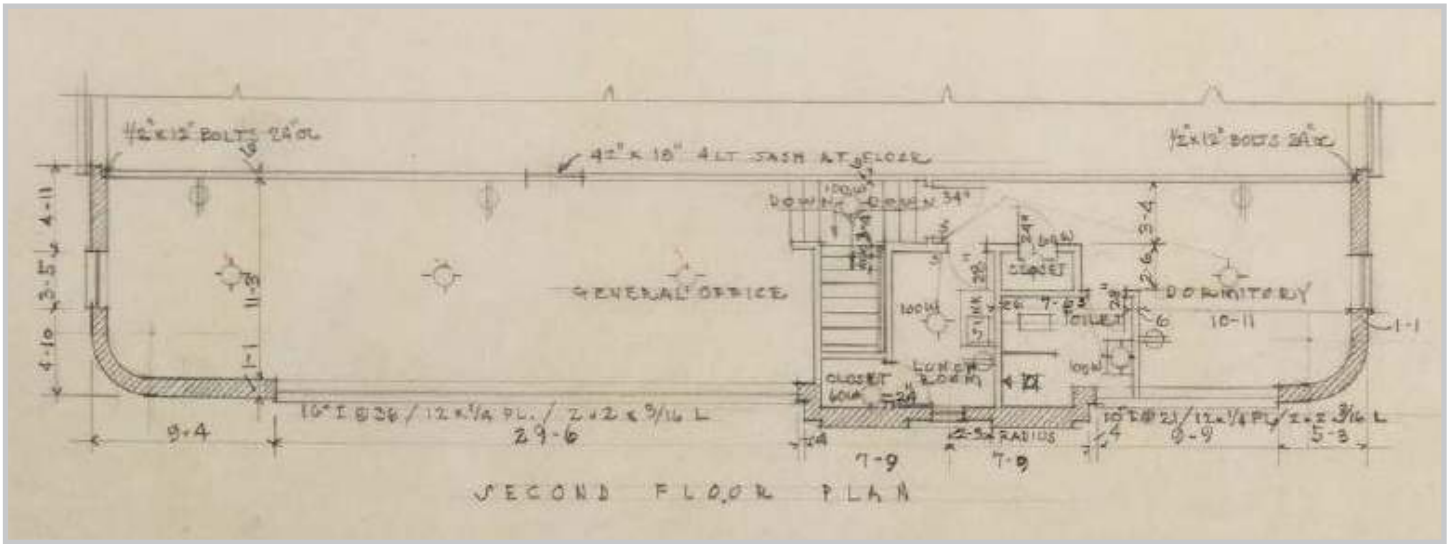




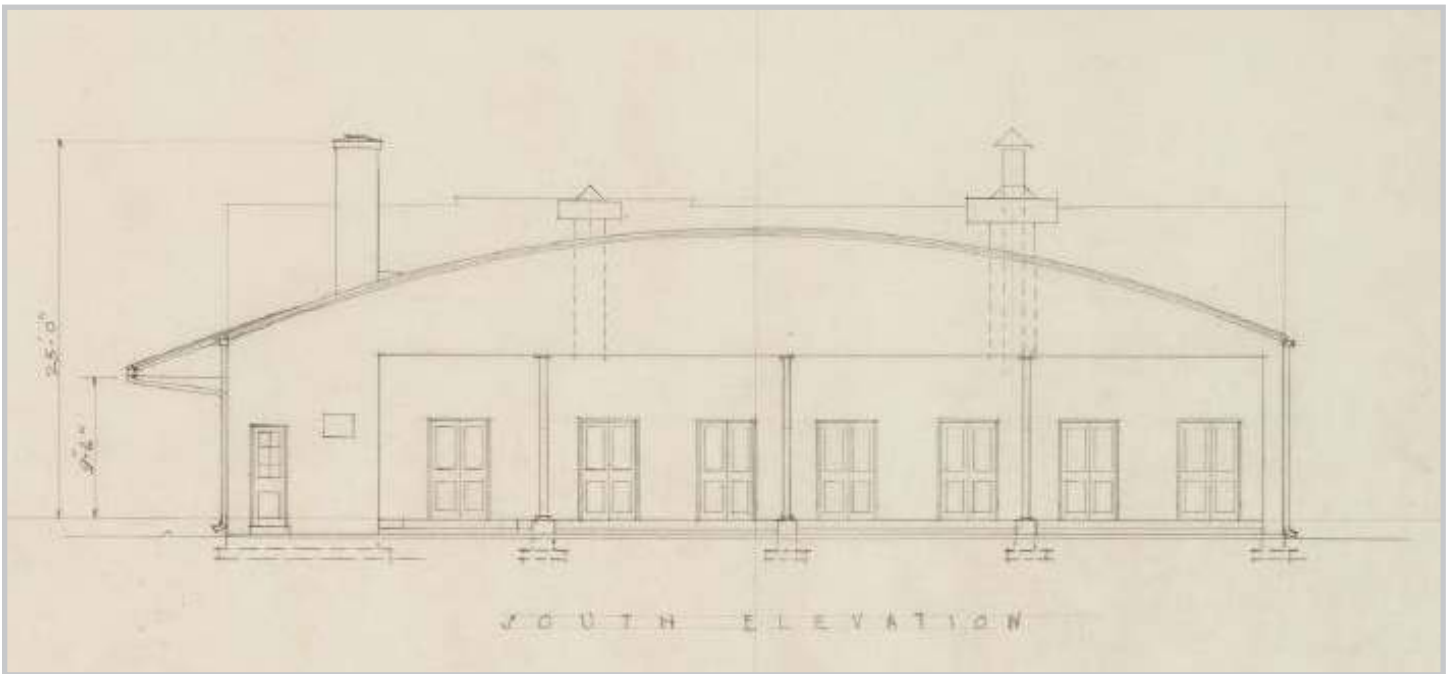
# 1ST FLOOR- PLAN



## 2ND FLOOR- PLAN



## SOUTH ELEVATION



For more information please contact:  
Whitney Freeburn  
whitney@thenicholscompany.com  
704.373.9797

This information has been obtained from sources believed to be reliable. While we do not doubt its accuracy, we have not verified it and make no guarantee, warranty or representation to independently confirm its accuracy and completeness.

