

DILWORTH CROSSING

2230 PARK ROAD | CHARLOTTE, NC 28203

AVAILABLE FOR LEASE



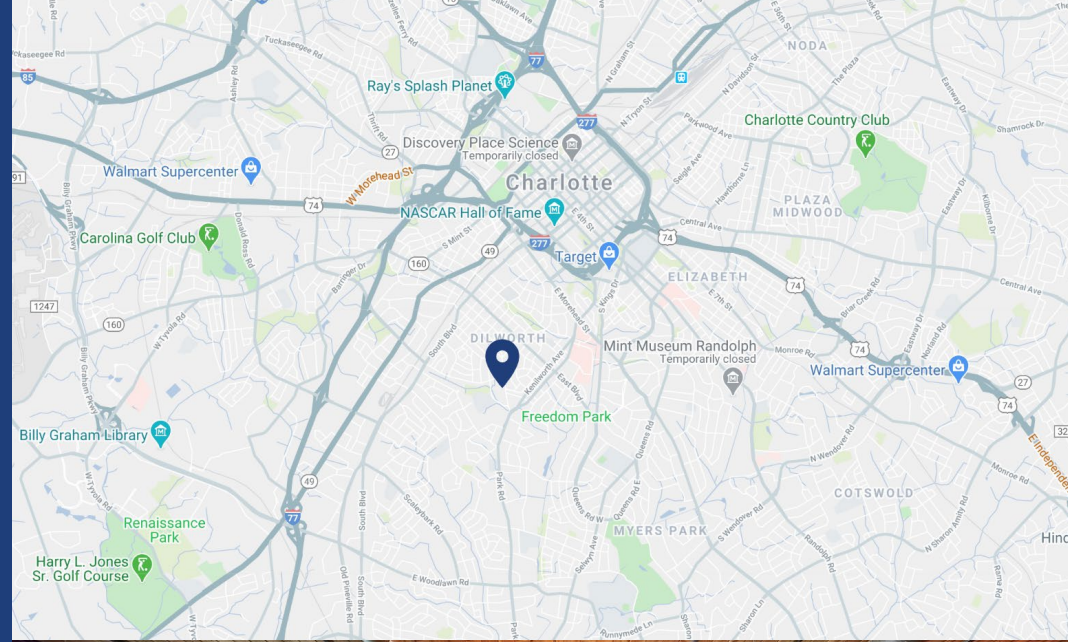
PROPERTY OVERVIEW

DILWORTH CROSSING

Space available in Dilworth Crossing, a unique neighborhood shopping center in the heart of Dilworth, an affluent neighborhood in Charlotte, NC. The center is shadow anchored by Food Lion and is surrounded by local and national tenants. Located in an area with excellent demographics and only 2.1 miles from Uptown Charlotte, this is a rare opportunity in an impressive submarket of Charlotte.

PROPERTY DETAILS

Address	2230 Park Road Charlotte, NC 28203
Square Footage	+/- 2,883 SF Available for Lease
GLA	+/- 14,079 SF
Use	Retail, Office and Medical
Year Built	2017
Parking	Abundant shared parking and access
Traffic Counts	Park Road 7,100 VPD
Lease Rate	Call for Leasing Details
Additional Details	Elevator and stairwell access to the second floor suites and rooftop terrace



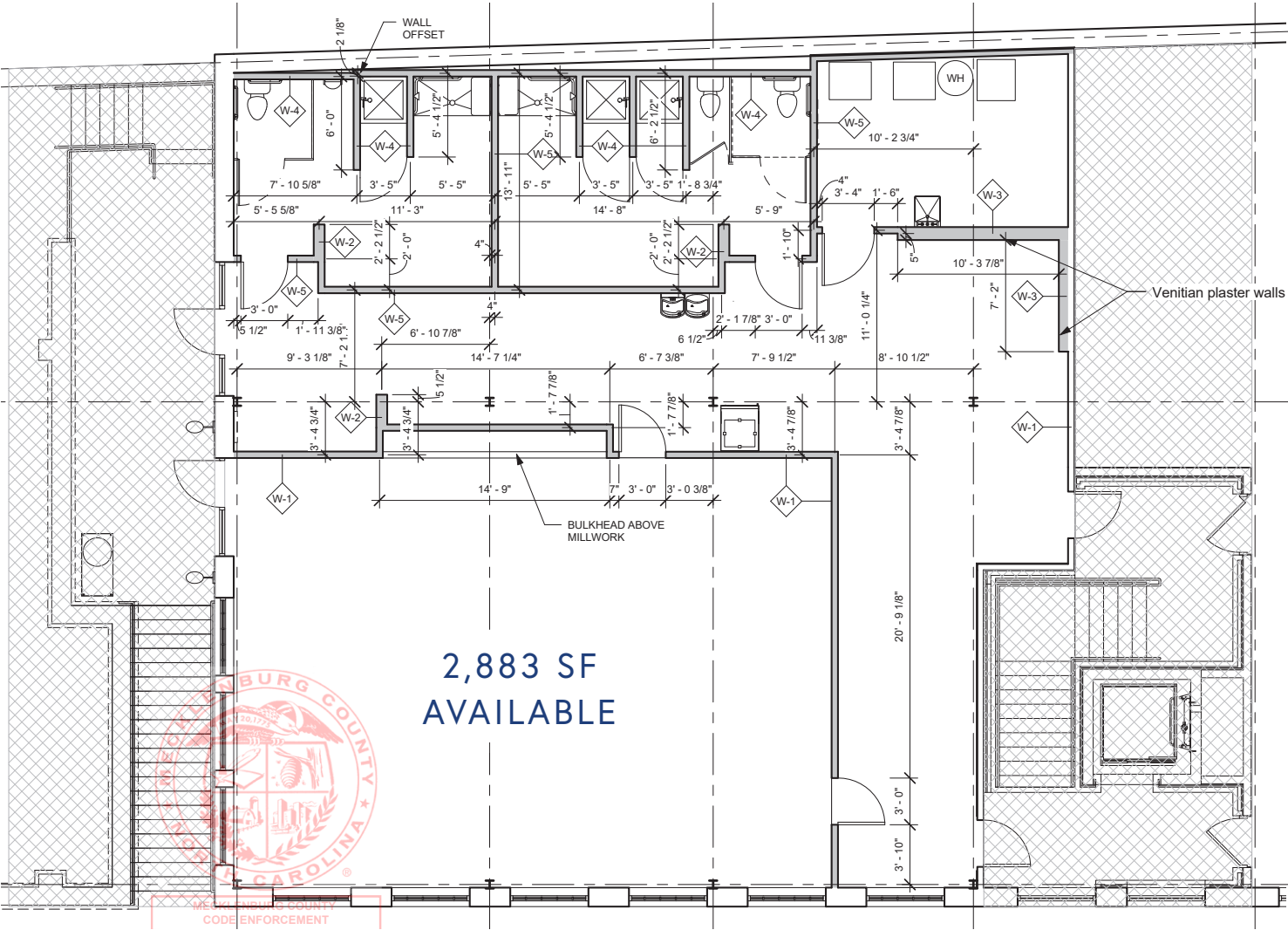
AVAILABLE SPACE

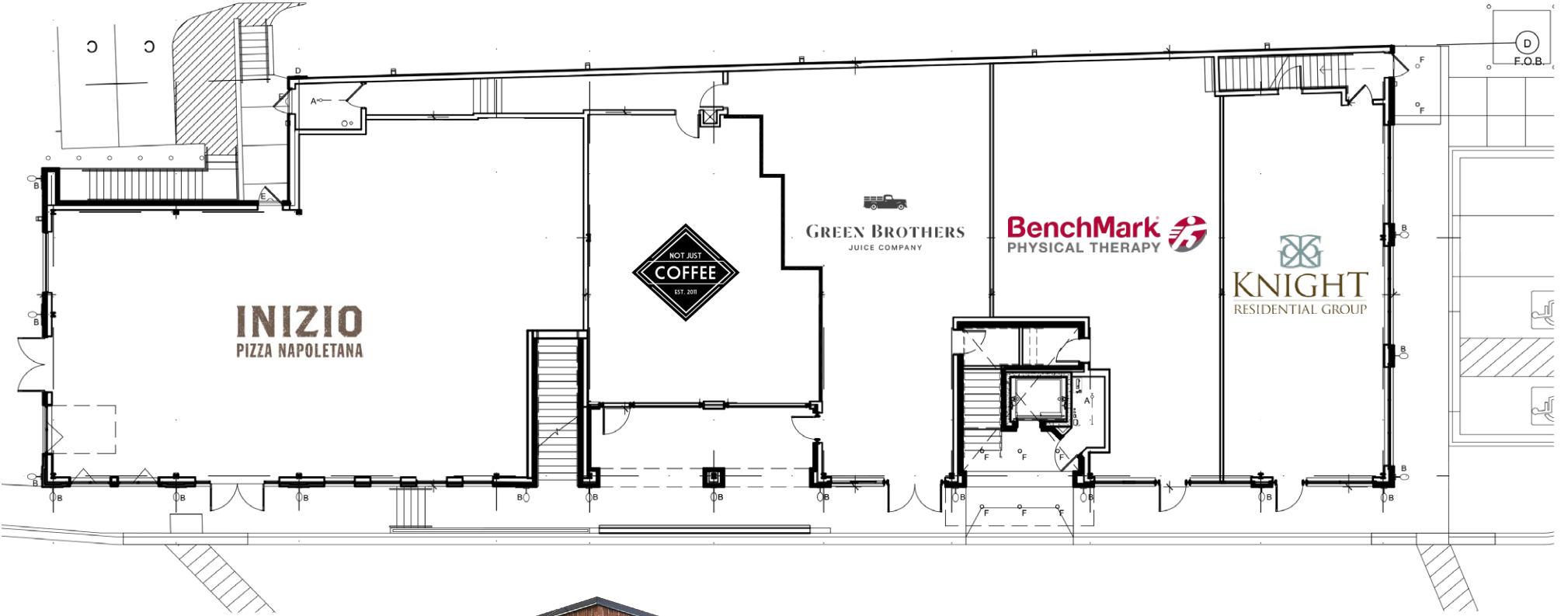


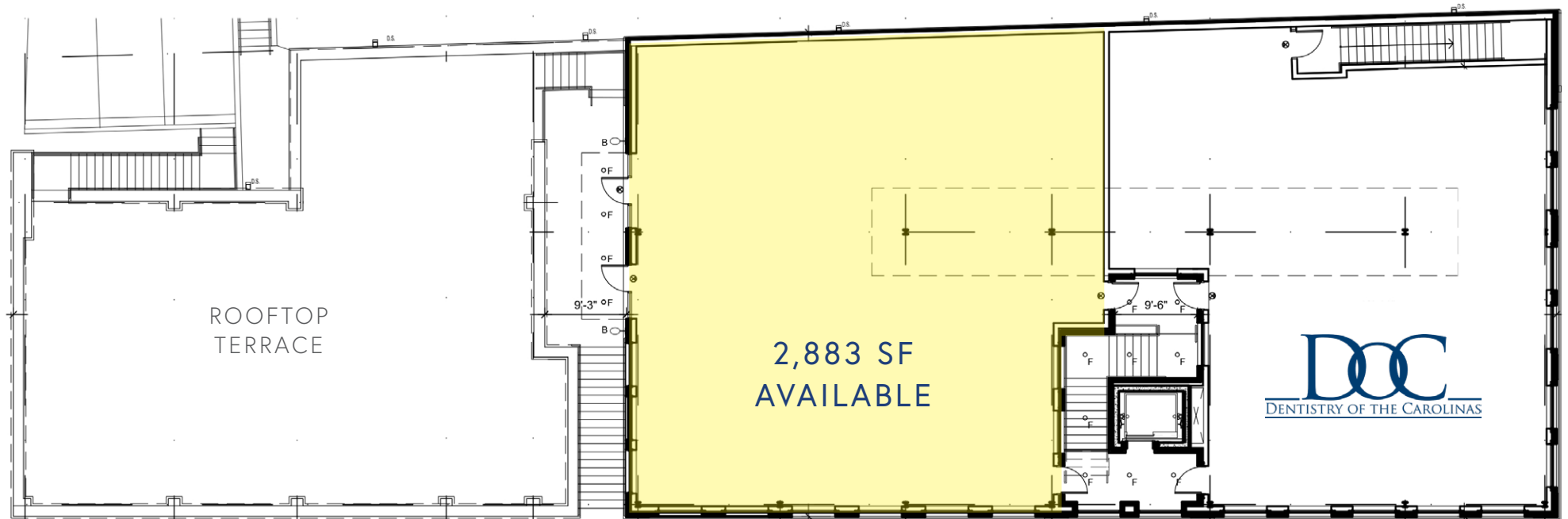
DEMOGRAPHICS

RADIUS	1 MILE	3 MILE	5 MILE
2019 Population	16,858	115,231	260,955
Avg. Household Income	\$129,090	\$117,523	\$99,448
Median Household Income	\$87,223	\$75,403	\$60,235
Households	8,743	54,720	114,647
Daytime Employees	29,101	159,068	254,410

AVAILABLE SPACE

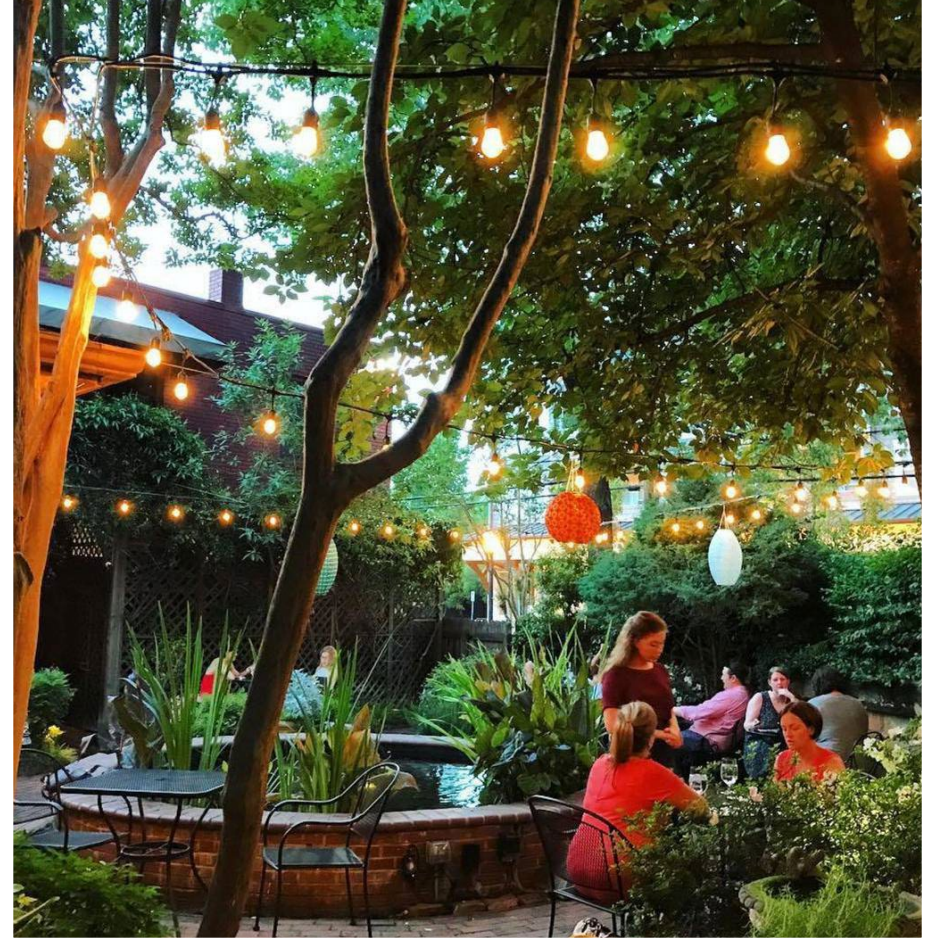






DILWORTH CHARLOTTE, NC

Beloved for its charming bungalows bordered by white picket fences, picturesque Dilworth was Charlotte's first streetcar suburb, which explains why a large portion of the neighborhood is listed on the National Register of Historic Places. Today, block parties, yard sales and festivals pop up in this pedestrian-friendly enclave, seated just minutes from Center City and blocks from South End. Although year-round run clubs, fall pumpkin patches and Christmas tree lots give compact Dilworth its cozy-yet-spirited vibe, much of its character draws on its historical qualities.



MARKET OVERVIEW





CONTACT

JOSH BEAVER

josh@thenicholscompany.com

(704) 373-9797



THE NICHOLS COMPANY

Website

www.TheNicholsCompany.com

Phone

(O) 704.373.9797

(F) 704.373.9798

Address

1204 Central Avenue, Suite 201
Charlotte, NC 28204

This information has been obtained from sources believed to be reliable. While we do not doubt its accuracy, we have not verified it and make no guarantee, warranty or representation to independently confirm its accuracy and completeness.