



Westerly Hills Plaza

3400 Wilkinson Boulevard | Charlotte, NC 28208



Fully Leased
Retail Shopping Center

Property Overview

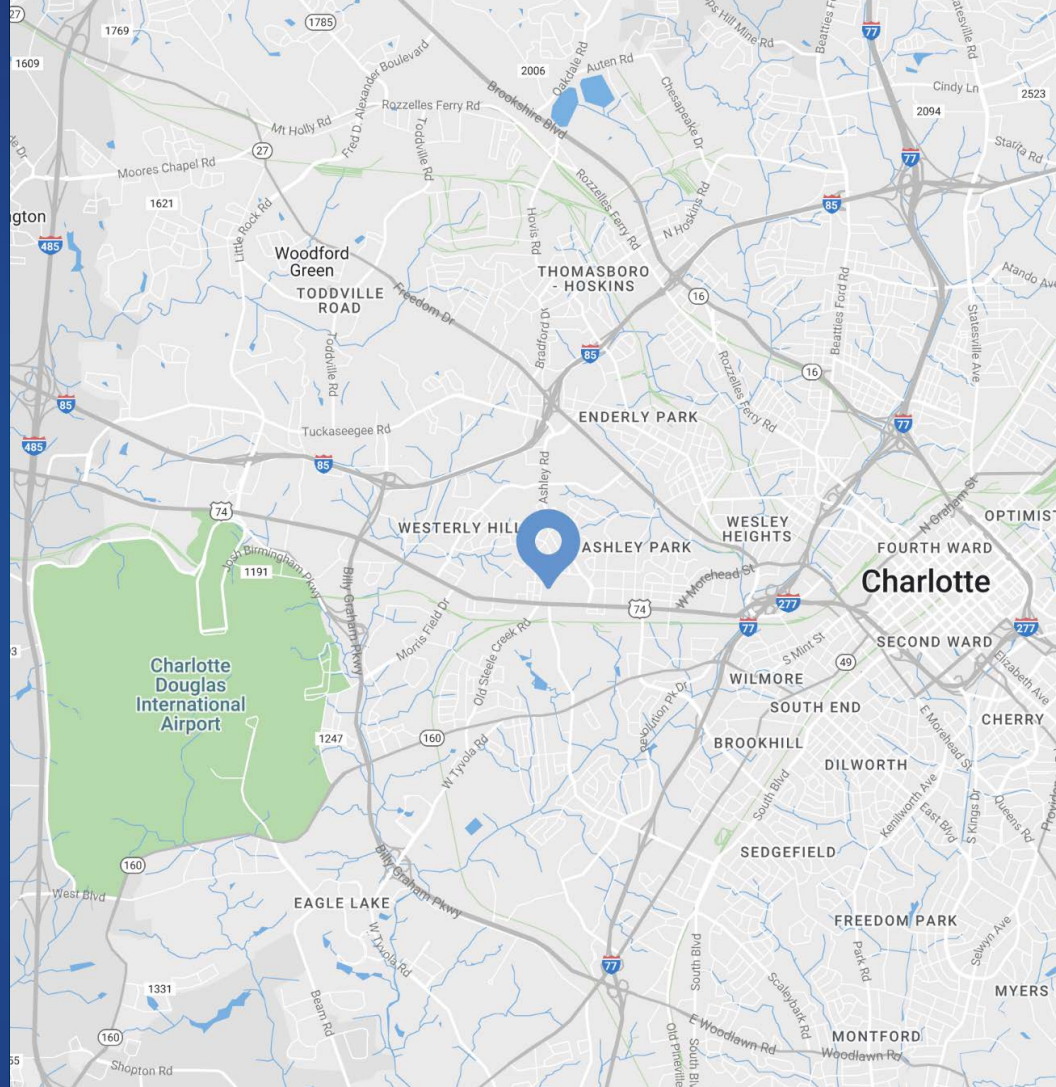
Westerly Hills Plaza

Fully Leased

The property is located along Wilkinson Blvd, one of Charlotte's most heavily traveled thoroughfares with traffic counts of +/- 32,000 VPD. It offers tremendous road frontage on Wilkinson Blvd, excellent visibility and convenience from CLT Airport, Uptown, and the interstates.

Property Details

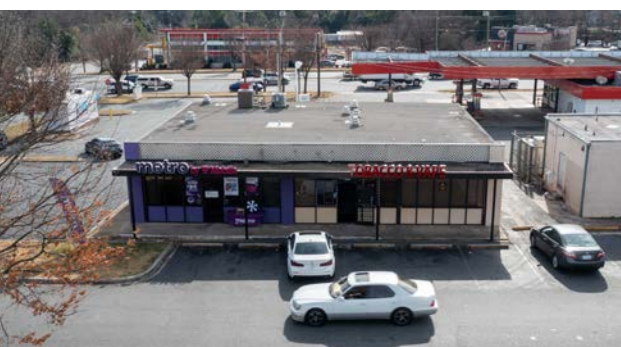
Address	3400 Wilkinson Boulevard Charlotte, NC 28208
Availability	Fully Leased
GLA	+/- 95,000 SF Shadow-Anchored by a Walmart Supercenter
Parking	346 parking spaces
Zoning	B-1
Traffic Counts	Wilkinson Boulevard 32,000 VPD
Lease Rate	Call for Leasing Details
Additional Notes	Shadowed by Walmart Supercenter Located on the CATS Bus Route



Demographics

RADIUS	1 MILE	3 MILE	5 MILE
2023 Population	7,987	85,340	203,566
Avg. Household Income	\$56,304	\$109,560	\$112,797
Median Household Income	\$40,914	\$70,553	\$70,665
Households	3,328	41,562	95,062
Daytime Employees	4,487	104,981	233,650

Site Plan





Site

Rainbow Habitat for Humanity
metro FAMILY DOLLAR
laundromart
Shell POPEYES

Walmart WING STOP GameStop
MURPHY USA ASHLEY & STEWART GNC verizon
FIFTH THIRD BANK Little Caesars T Mobile the athlete's foot
American Deli AmeriHealth AMERICA'S BEST CONTACTS & EYEGLASSES

CVS pharmacy

cricket DTLR
FASTMED URGENT CARE

O'Reilly AUTO PARTS

Where Restaurants Shop
RESTAURANT DEPOT

Church's Chicken

wiki wiki

BURGER KING

Bojangles

QT QuikTrip

ABC STORE

Old Steele Creek Rd

Wilkinson Blvd

32,000 VPD

Wilkinson Blvd

Ashler Rd



Contact for Details

Josh Beaver

(704) 749-5726

josh@thenicholscompany.com



Website

www.TheNicholsCompany.com

Phone

Office (704) 373-9797

Fax (704) 373-9798

Address

1204 Central Avenue, Suite 201

Charlotte, NC 28204

This information has been obtained from sources believed to be reliable. While we do not doubt its accuracy, we have not verified it and make no guarantee, warranty or representation to independently confirm its accuracy and completeness.