

Front of Building



Rear of Building



Available Retail for Lease

# Shoppes at The Park

15425 Hodges Circle | Huntersville, NC 28078



**ABOUT**

Highly visible +/- 2,000 SF retail space available for lease in strip center located at The Park, a premier mixed-use community just off of I-77 along Gilead Road in Huntersville, NC. The space, ideal for service, office or medical uses, has City Barbeque and US Army as co-tenants. It is in close proximity to numerous other retail centers, specialty shops and restaurants as well as Earth Fare Grocery store and Novant Health Huntersville Medical Center.

**PROPERTY DETAILS**

- +/- 7,200 SF Retail Strip Center
- +/- 2,000 SF Available
- Lease Rate: \$32/SF NNN

**PROPERTY FEATURES**

- Ideal for Service, Office or Medical Uses
- 41 Parking Spaces



**DEMOGRAPHICS**

Demographics	1 Mile	3 Miles	5 Miles
Total Population	4,901	28,410	66,648
Average HH Income	\$97,445	\$107,467	\$102,748
Daytime Population	5,204	37,149	91,029
Traffic Counts: I-77 98,000 VPD, Gilead Rd. 35,000 VPD			

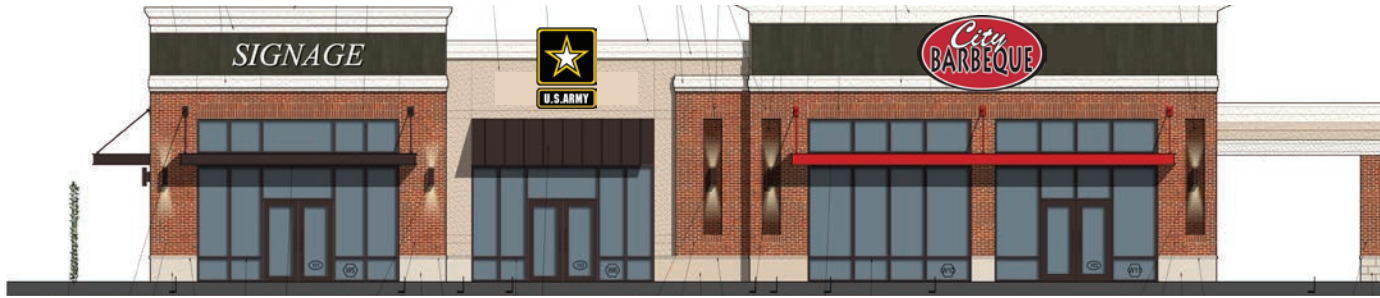
**THE PARK HUNTERSVILLE**

The Park, located in Huntersville, NC just outside of Charlotte, is a premier mixed-use community offering space for lease, land for sale and build-to-suit options. Keller Technology, Novant Health Huntersville Medical Center, and Joe Gibbs Racing are just a few of the businesses that are a part of The Park.





Front Exterior

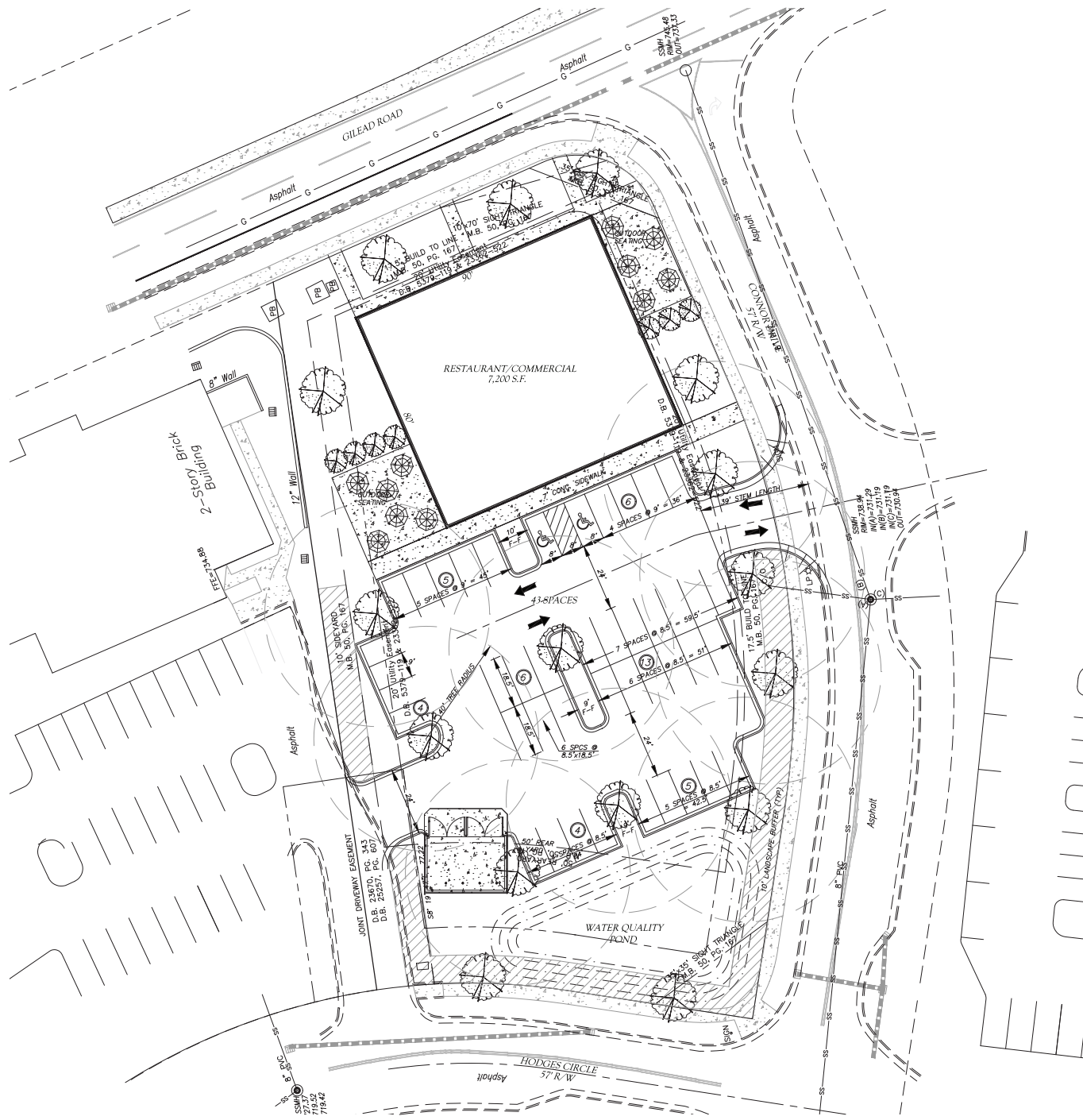


Rear Exterior



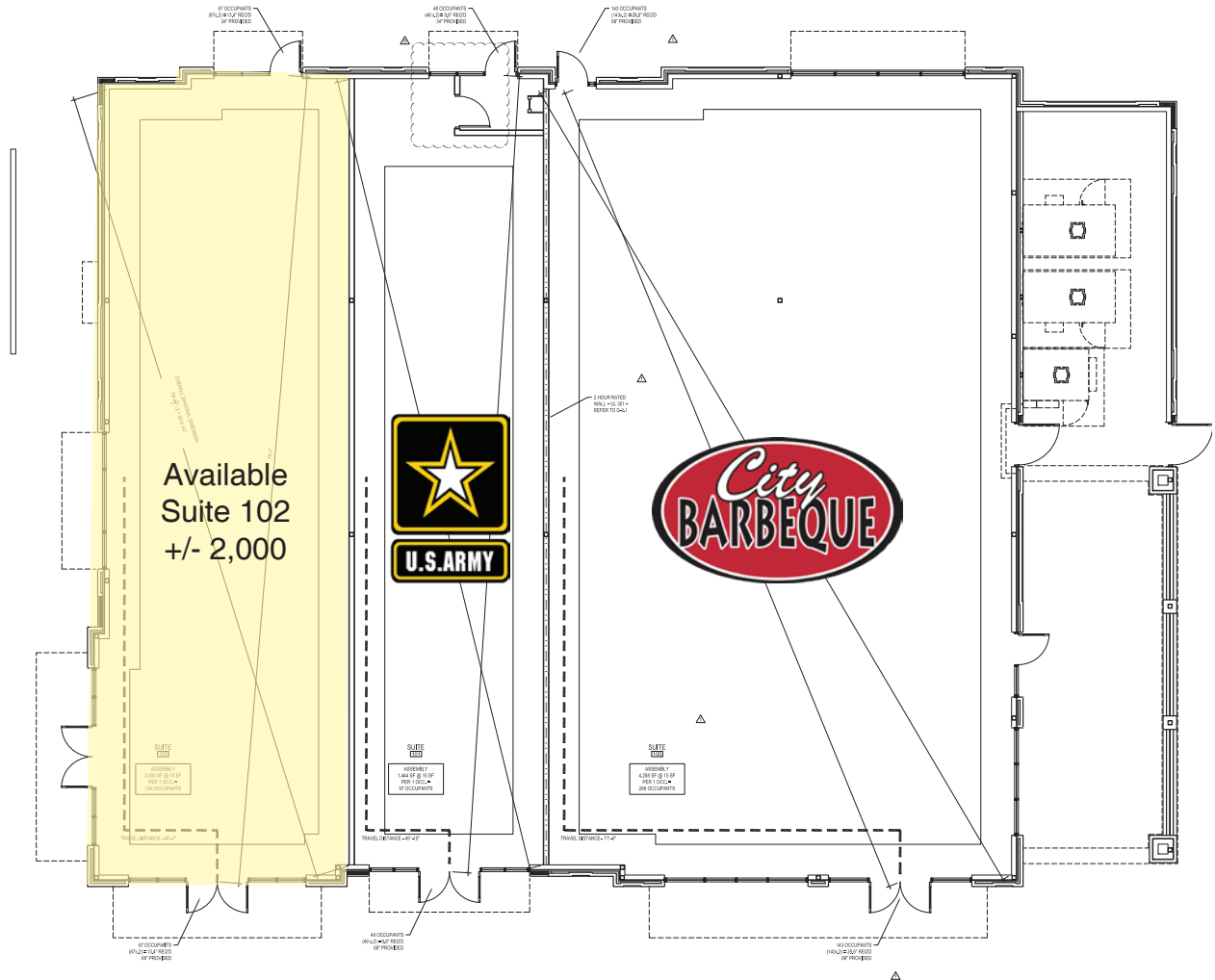
Side Exteriors





# FLOOR PLAN

<b>Suite</b>	<b>Sq. Ft.</b>	<b>Tenant</b>
100	4,823	City Barbeque
101	1,447	US Army
102	2,000	Available



JOSH BEAVER | The Nichols Company | (O) 704.373.9797 | (F) 704.373.9798  
 Josh@thenicholscompany.com | www.thenicholscompany.com | 1204 Central Avenue, Suite 201, Charlotte, NC 28204

This information has been obtained from sources believed to be reliable. While we do not doubt its accuracy, we have not verified it and make no guarantee, warranty or representation to independently confirm its accuracy and completeness.