

John Hadley
The Nichols Company
704.373.9797 (Office) • 704.373.9798 (Fax)
jhadley@thenicholscompany.com
www.thenicholscompany.com
600 Queens Rd, Charlotte, NC 28207

Available
Office for
Sale or Lease

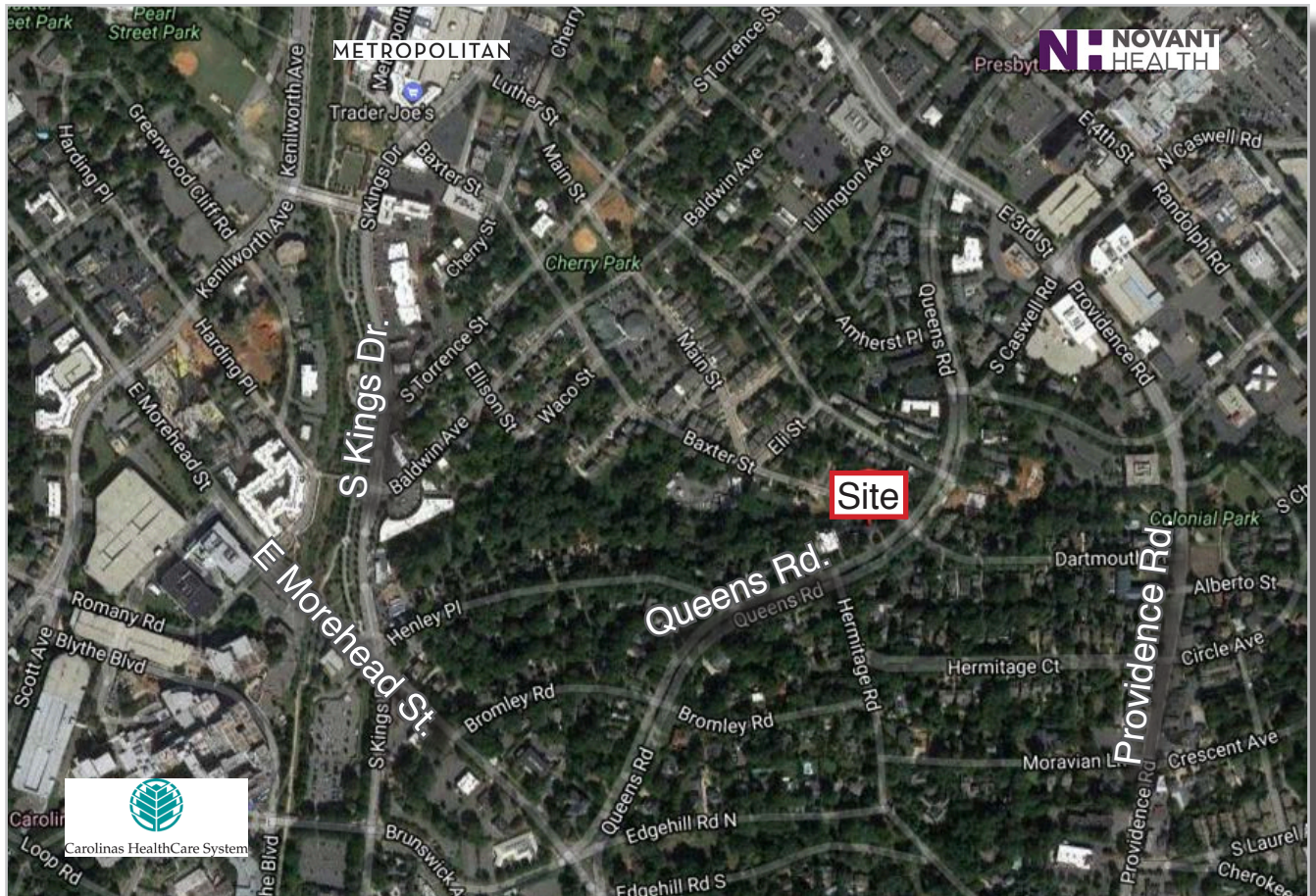


600 Queens Rd.

Charlotte, NC | 28207

ABOUT

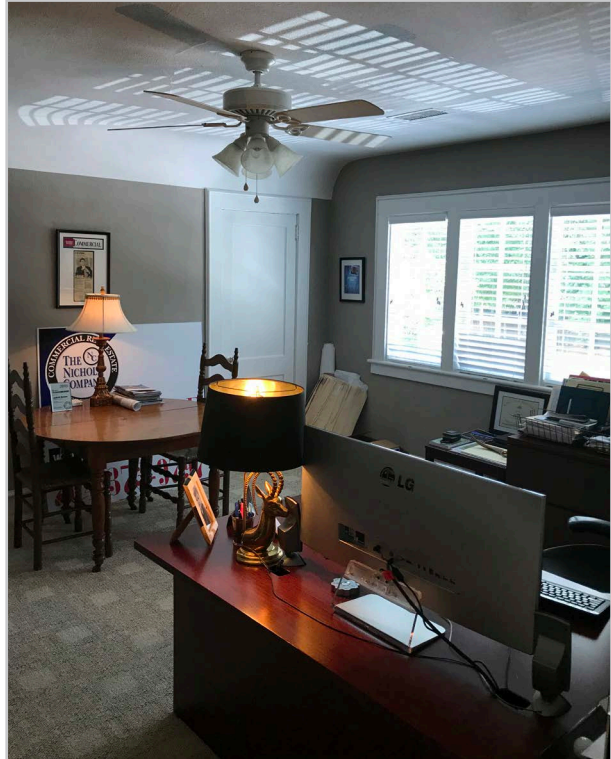
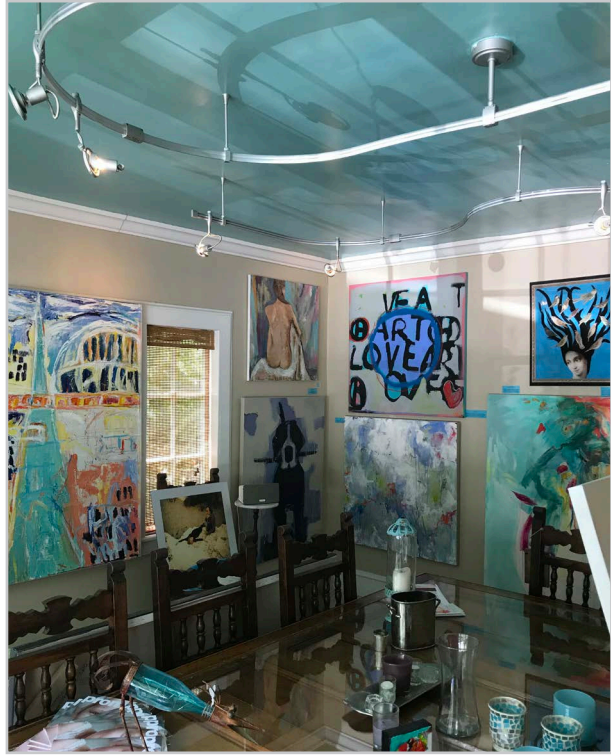
Located at the corner of Queens Rd. and Baxter St. in the Myers Park neighborhood, this three story +/- 5,567 SF office building is available for sale or lease. It is located within walking distance to restaurants and is in close proximity to Novant Presbyterian Hospital, Uptown and the interstates.



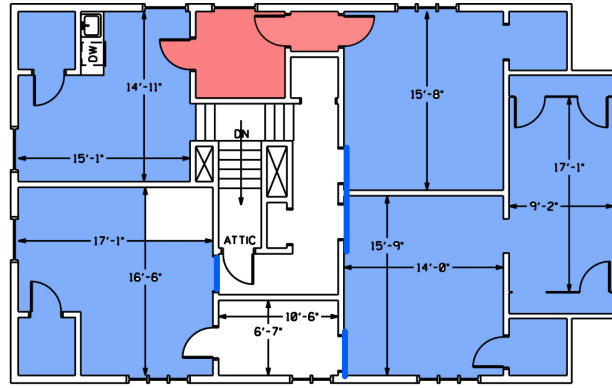
SITE ATTRIBUTES

- +/- 5,567 SF
- .583 Acres
- Zoning: R-22
- Three Stories
- Sale Price: \$1,500,000
- Lease Rate: \$22/SF NNN

PHOTOS

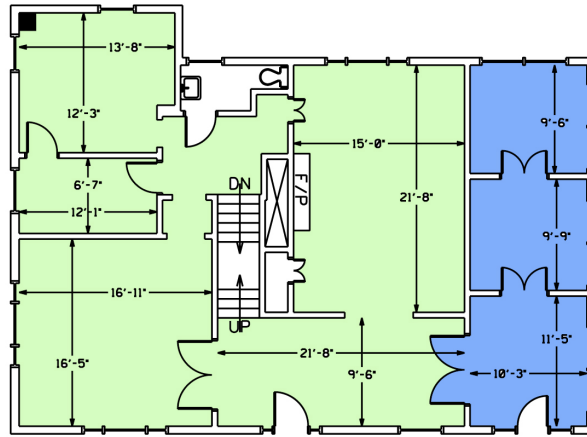


FLOOR PLAN



SECOND FLOOR

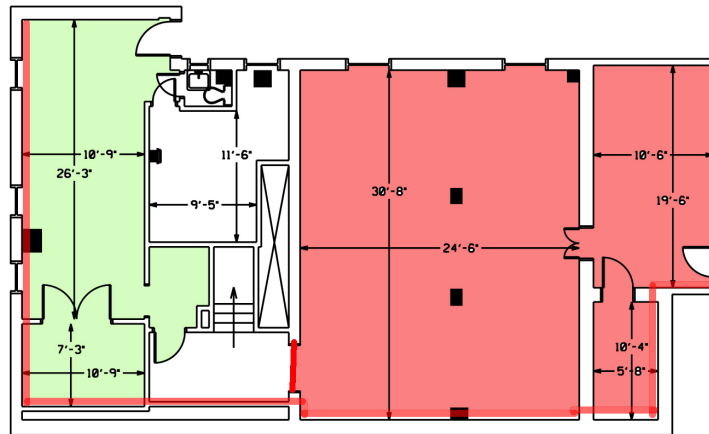
1,732 SF



FIRST FLOOR

1,763 SF

- TNC
- Sprock
- Quinter



BASEMENT

2,072 SF

600 QUEENS RD
 5,567 TOTAL SF
 USING EXTERIOR WALL
 NO DEDUCTIONS FOR KNEE WALLS

For more information please contact:
John Hadley
 Jhadley@thenicholscompany.com
 704.373.9797

