



Nova's Corner

1318 Pecan Avenue, Charlotte, NC 28205



Plaza Midwood Retail for Lease

+/- 1,192 SF Available

Property Overview

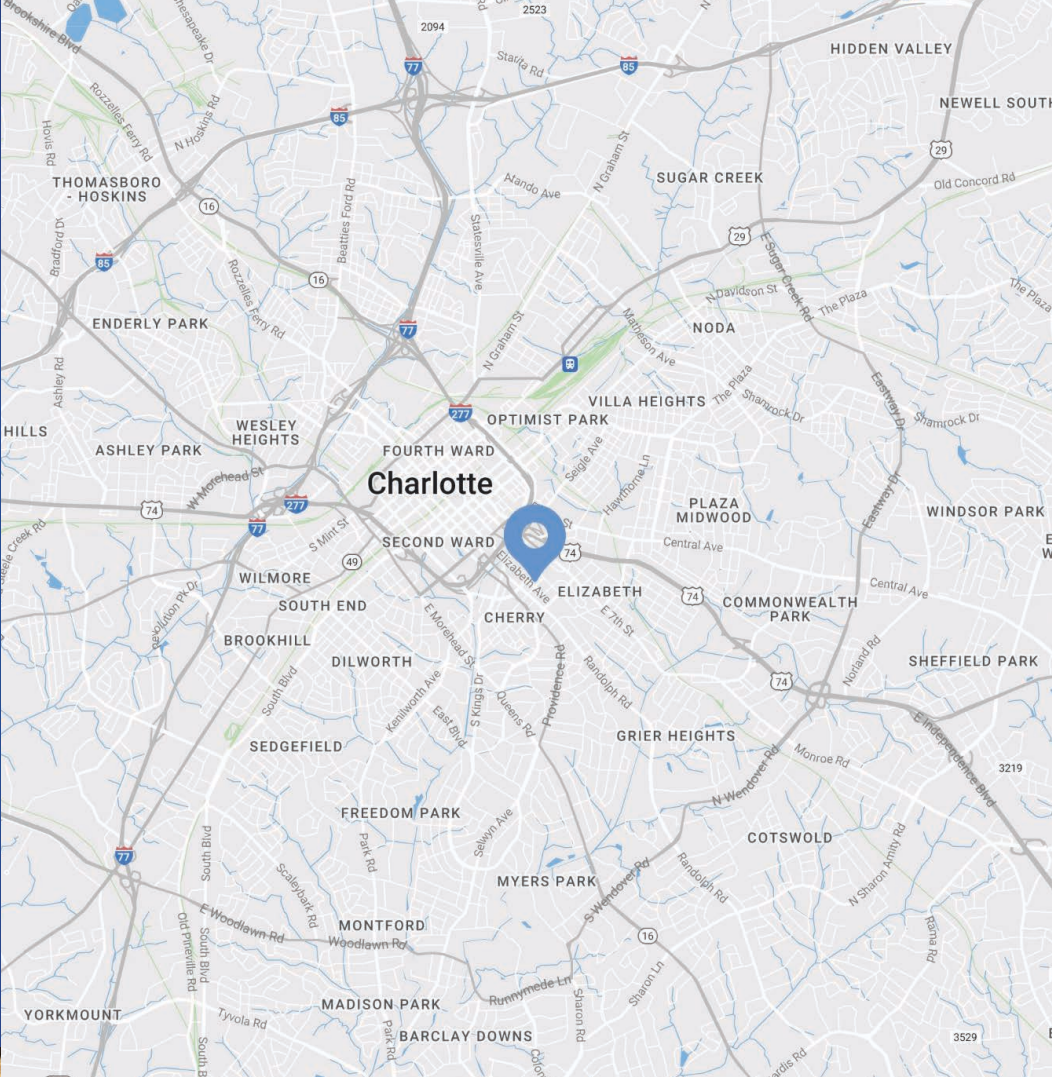
Nova's Corner

Available for Lease

+/- 10,428 SF two level retail building in the heart of Plaza Midwood. Nova's Corner includes two floors with spaces ideal for retail or office use. The site is within walking distance to numerous restaurants and retail shops and is a quick drive to Uptown, Midtown and the Interstates.

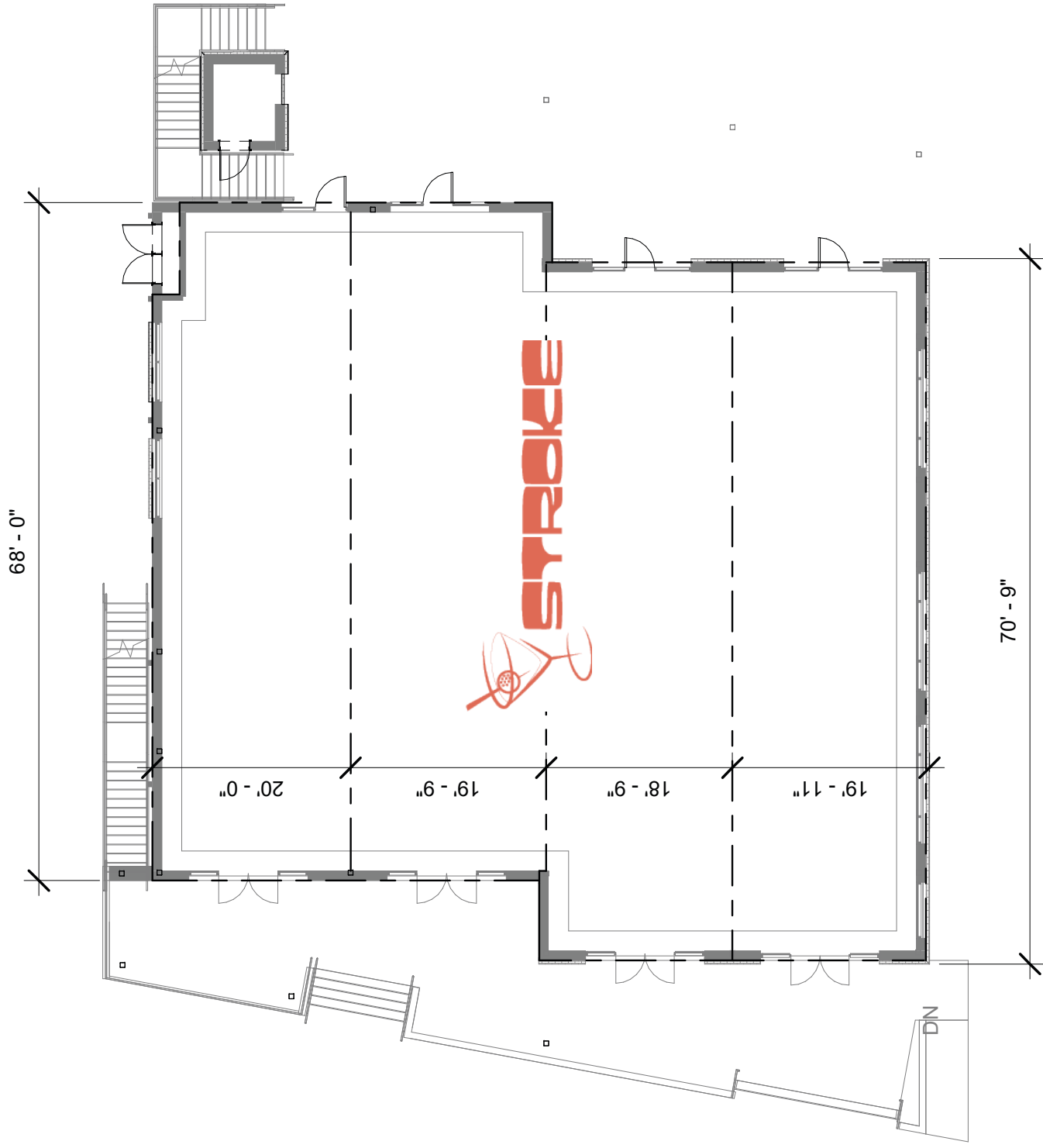
Property Details

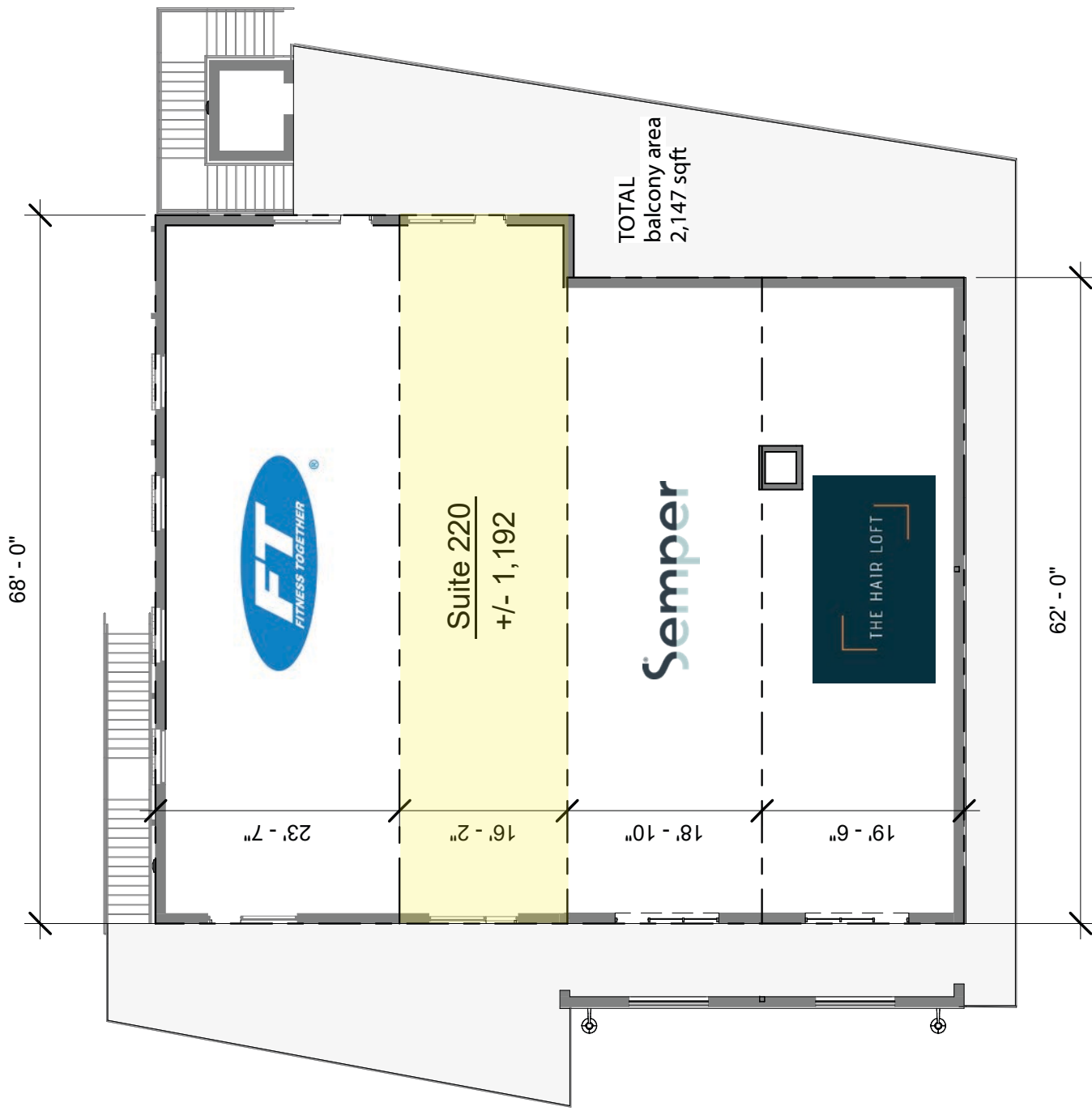
Address	1318 Pecan Avenue Charlotte, NC 28205
Square Footage	+/- 1,192 SF Available 2nd Floor
Building Size	10,428 SF
Parking	Abundant parking
Traffic Counts	Central Avenue 25,500 VPD
Lease Rate	Call for Leasing Details
Additional Notes	Elevator and stairs to Upstairs Bays



Demographics

RADIUS	1 MILE	3 MILE	5 MILE
2022 Population	16,197	128,671	298,578
Avg. Household Income	\$132,803	\$123,425	\$107,042
Median Household Income	\$92,437	\$76,951	\$62,726
Households	8,545	64,136	134,972
Daytime Employees	12,296	152,616	242,948





Plaza Midwood

Charlotte, NC

Just a 1 mile cruise along Central Avenue from Uptown Charlotte will put you in a place where fashion, food, and art rule! Plaza Midwood is one of Charlotte's most unique, preeminent urban core neighborhoods. The neighborhood boasts a mixture of unique restaurants, art galleries, locally owned shops, popular bars, and live music venues. Recent years have witnessed its resurgence as a vibrant, highly sought after neighborhood with numerous upcoming and completed developments.



Market Overview



Exterior Photos





Contact for Details

John Hadley

(704) 373 - 9797

jhadley@thenicholscompany.com



Website

www.TheNicholsCompany.com

Phone

Office (704) 373-9797

Fax (704) 373-9798

Address

1204 Central Avenue, Suite 201
Charlotte, NC 28204

This information has been obtained from sources believed to be reliable. While we do not doubt its accuracy, we have not verified it and make no guarantee, warranty or representation to independently confirm its accuracy and completeness.