



Available for Lease

# 1212 Central Avenue

Charlotte, NC 28204

## ABOUT

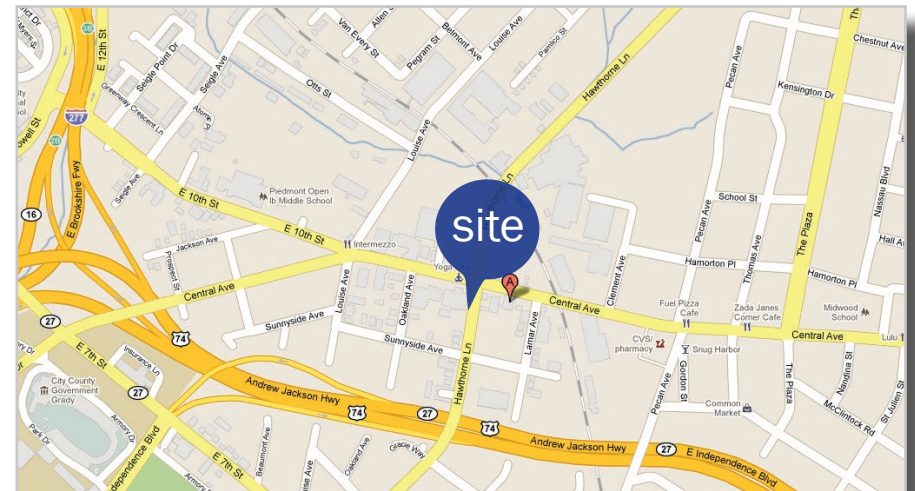
Located in the heart of the Plaza-Midwood neighborhood, 1212 Central Avenue is well positioned at the intersection of Hawthorne Lane. The storefront is highly visible and stretches all the way up to the sidewalk. Parking is available behind the building with the potential for additional shared parking.

## PROPERTY DETAILS

- +/- 921sf Available for Lease
- Zoning: B-2 PED
- Use: Office, Retail, Live/Work
- Lease Rate: \$2,450/month NNN

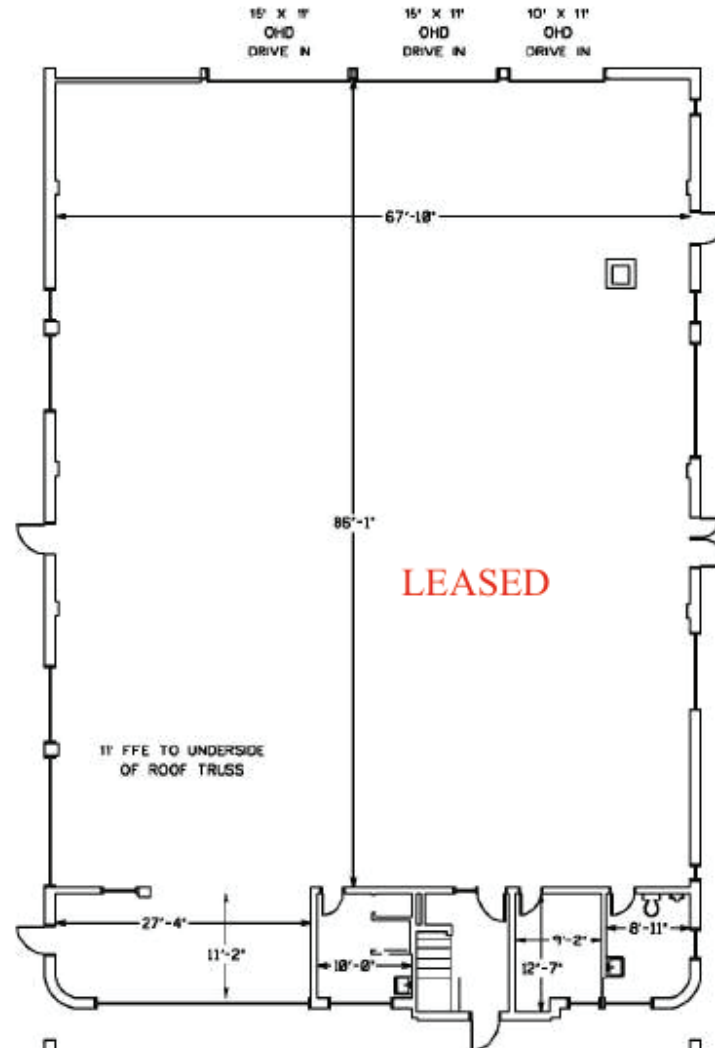
## PROPERTY FEATURES

- Second floor office
- Located in the heart of the Plaza-Midwood neighborhood



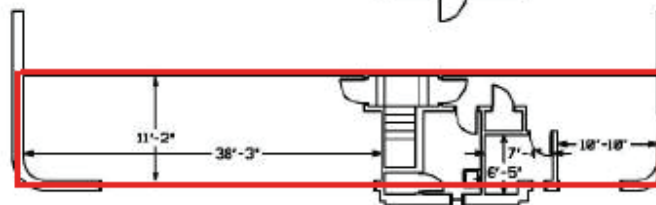
First Floor

7,022 SF



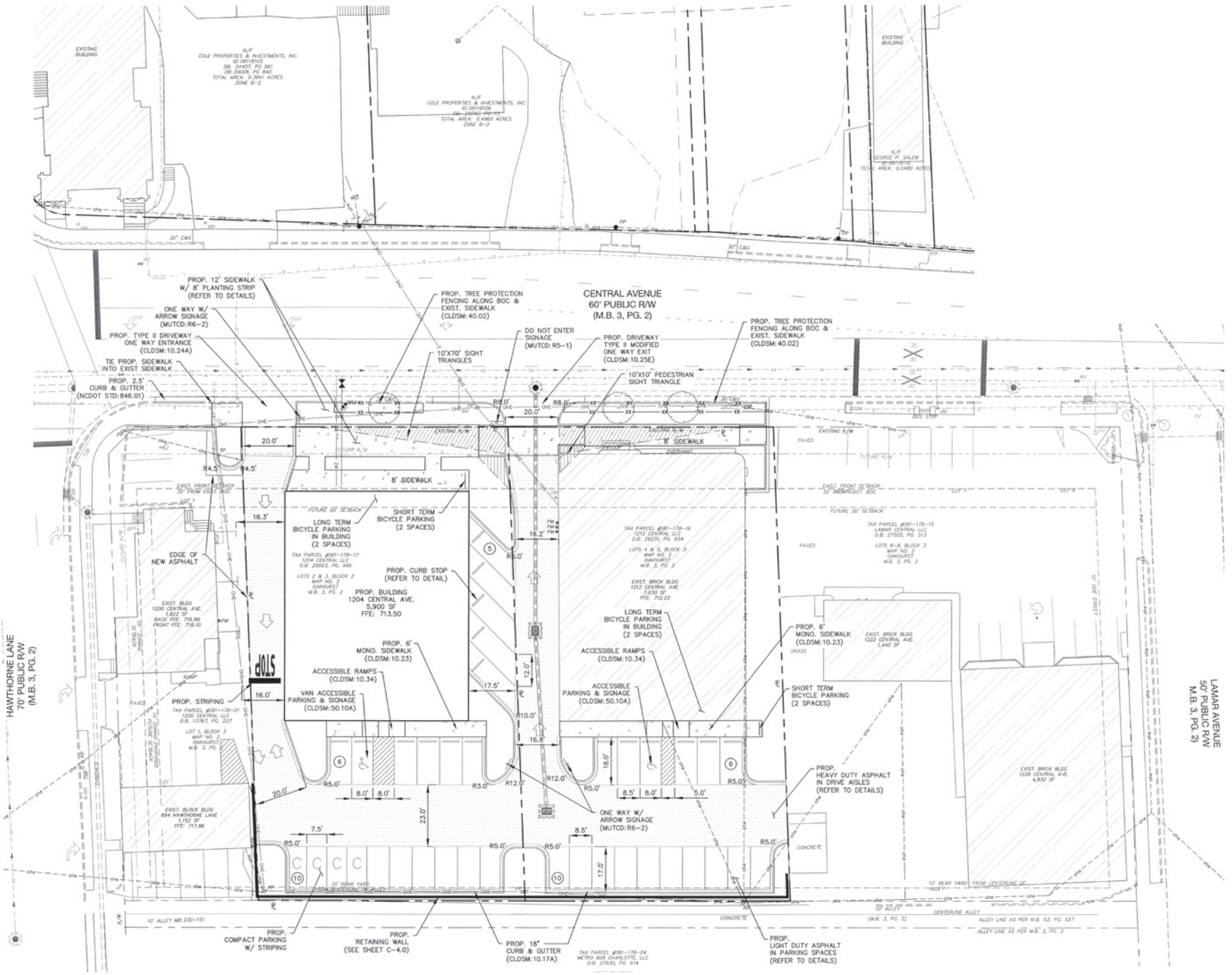
Second Floor

921 SF



AVAILABLE

1212 CENTRAL AVE  
7,022 FIRST FLOOR  
921 SF SECOND FLOOR



# MARKET OVERVIEW

Plaza Midwood is located about 1 mile east of Uptown Charlotte. Known for its eclectic vibe, it has a mix of art galleries, locally owned shops and restaurants.

Recent years have seen its resurgence as a residential neighborhood as well, with numerous multi-family residential communities underway.

Read more here: <http://plazamidwood.org>



PROPERTY PHOTOS



PROPERTY PHOTOS





WHITNEY FREEBURN | The Nichols Company | (O) 704.373.9797 | (F) 704.373.9798  
Whitney@thenicholscompany.com | www.thenicholscompany.com | 1204 Central Avenue, Suite 201, Charlotte, NC 28204

*This information has been obtained from sources believed to be reliable. While we do not doubt its accuracy, we have not verified it and make no guarantee, warranty or representation to independently confirm its accuracy and completeness.*