

MINT HILL FESTIVAL

6914 MATTHEWS-MINT HILL RD | CHARLOTTE, NC 28227



CONTACT FOR DETAILS

JOSH BEAVER

(704) 373-9797

Josh@TheNicholsCompany.com

Available Outparcel & Retail For Lease

+/- 2,377 SF INLINE SPACE & UP TO 2,000 SF EXPANSION SHOP SPACE
0.71 ACRE OUTPARCEL AVAILABLE

PROPERTY OVERVIEW

MINT HILL FESTIVAL

+/- 2,377 SF retail available for lease in a premium location in downtown Mint Hill.
+/- 0.71 AC outparcel and up to 2,000 SF Expansion Shop Space also available. The center is highly accessible, less than 2 miles to I-485, and within walking distance to Municipal offices and schools.

PROPERTY DETAILS

Address 6914 Matthews-Mint Hill Rd. | Charlotte, NC 28227

Available SF +/- 2,377 SF Available for Lease
Up to 2,000 SF Expansion Shop Space Available

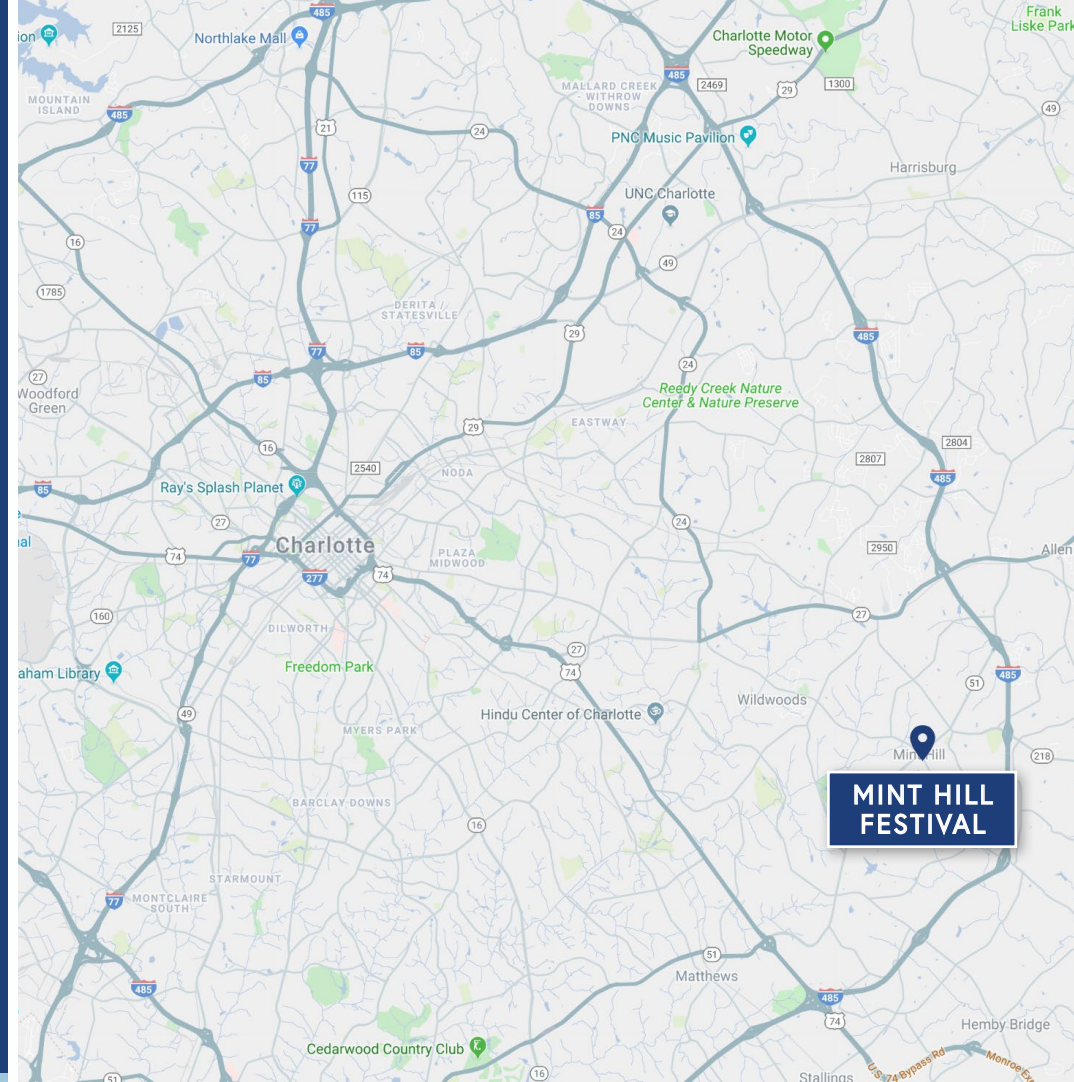
GLA +/- 59,047 SF

Available AC +/- 0.71 AC Outparcel Available

Lease Rate \$16/SF NNN Retail
\$25/SF NNN Expansion Shop Space

TICAM \$3.50/SF

Traffic Counts Matthews-Mint Hill Rd. | 19,000 VPD
Lawyers Rd. | 9,800 VPD



[CLICK HERE TO VIEW DRONE VIDEO](#)

DEMOGRAPHICS

RADIUS	1 MILE	3 MILE	5 MILE
2019 Population	3,146	33,417	118,844
Avg. Household Income	\$115,646	\$100,567	\$81,813
Median Household Income	\$88,284	\$78,590	\$61,777
Households	1,270	12,325	43,442
Daytime Employees	2,091	6,710	31,513

SITE PLAN



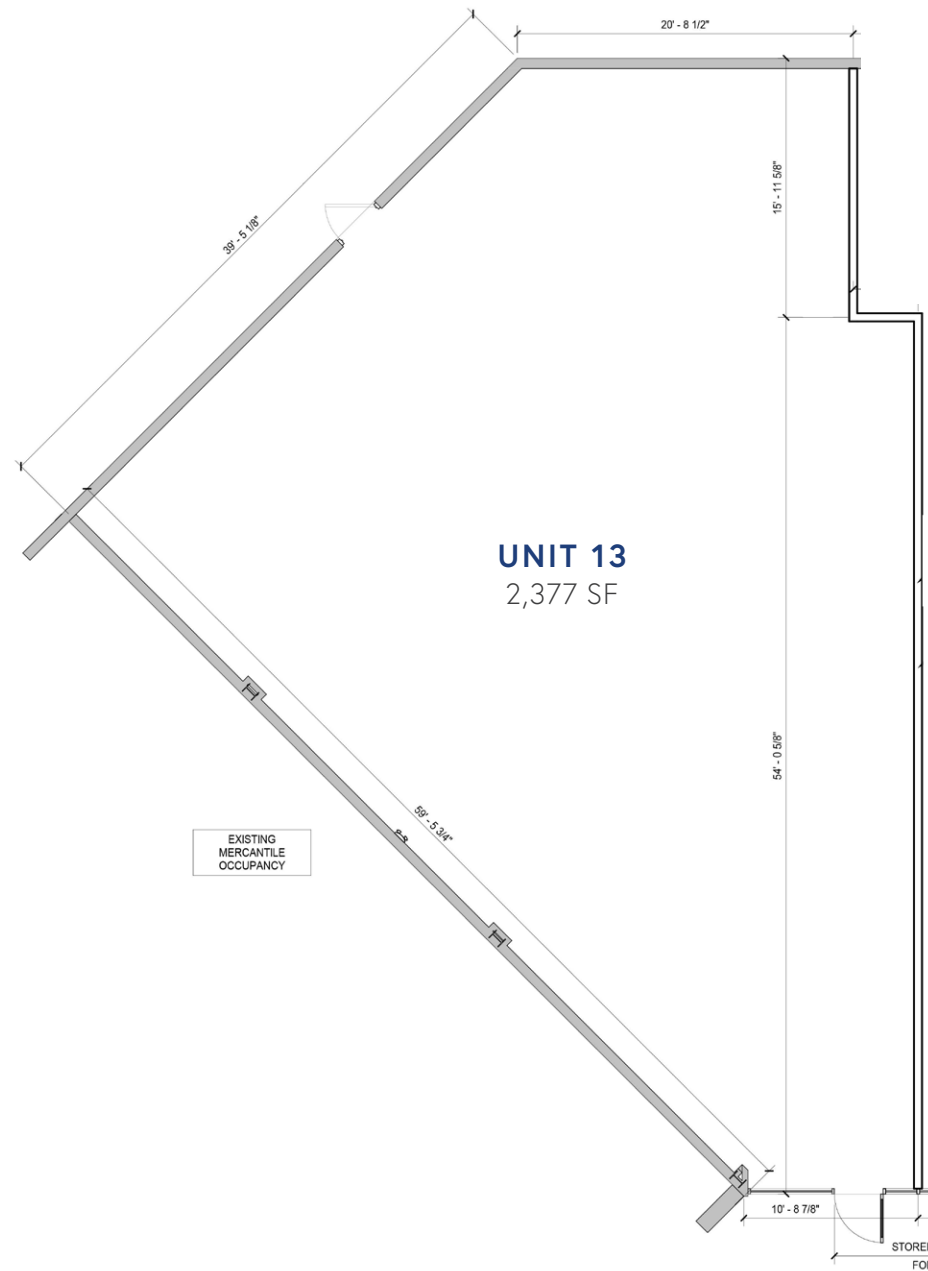
MATTHEWS-MINT HILL ROAD

TENANT ROSTER

1	Big Guys Pizza	2,610 SF
2	Gold and Silver Mint	840 SF
3	Cut & Company 2	1,170 SF
4	Superior Insurance	1,080 SF
5	Monroe Hardware	29,577
6	Cut & Company	800 SF
7	Daebak Korean Restaurant	1,500 SF
8	Mint Hill Carpets	1,260
9	Perfectly Polished Nails	1,050 SF
10	Cocktail Cakery	1,052 SF
11	Your Local Game Store	3,340 SF
12	Dollar Tree	8,640 SF
13	AVAILABLE	2,377 SF
14	State Farm	1,500 SF
15	Barks, Bones & Biscuits	2,270 SF
	EXPANSION SPACE	Up to 2,000 SF
OP	AVAILABLE	0.71 AC

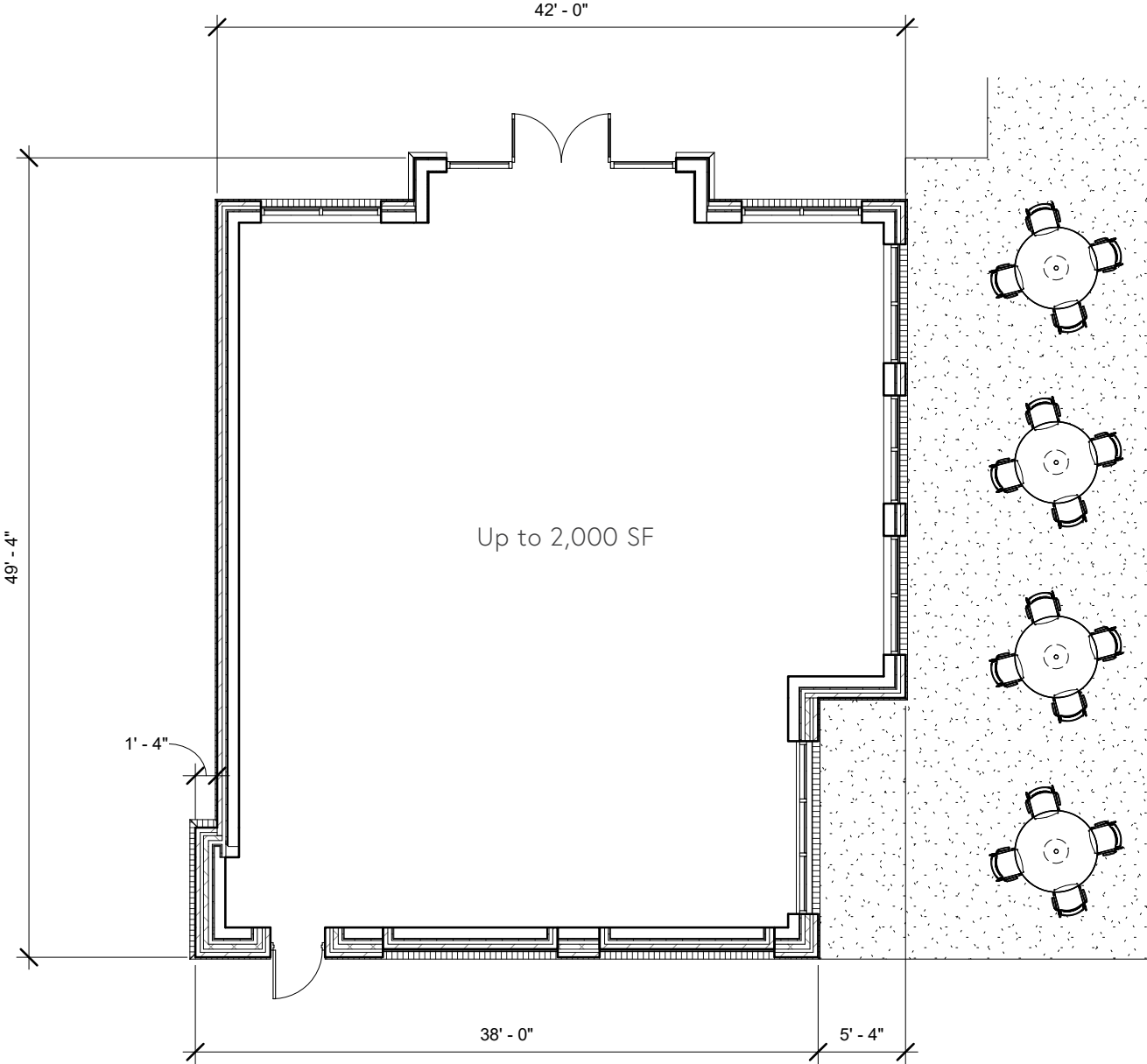
AVAILABLE

Unit 13 - 2,377 SF



AVAILABLE

Expansion Shop Space
Up to 2,000 SF



EXPANSION SHOP SPACE - RENDERINGS



MARKET OVERVIEW





CONTACT FOR DETAILS

JOSH BEAVER

(704) 373-9797

Josh@TheNicholsCompany.com



THE NICHOLS COMPANY

Website

www.TheNicholsCompany.com

Phone

Office (704) 373-9797

Fax (704) 373-9798

Address

1204 Central Avenue, Suite 201
Charlotte, NC 28204

This information has been obtained from sources believed to be reliable. While we do not doubt its accuracy, we have not verified it and make no guarantee, warranty or representation to independently confirm its accuracy and completeness.