



Land for Sale with Future Development Opportunity

Deer Lake Estates

Stone Drive | Brevard, NC 28712

ABOUT

Deer Lake Estates is comprised of 63.71 acres within Brevard city limits offering access to city water and sewer. The land is within close proximity to both Straus Park & Camp Carolina, and is deed restricted to allow eighteen homesites. It features a bold stream with magnificent views overlooking Brevard and the surrounding mountains.

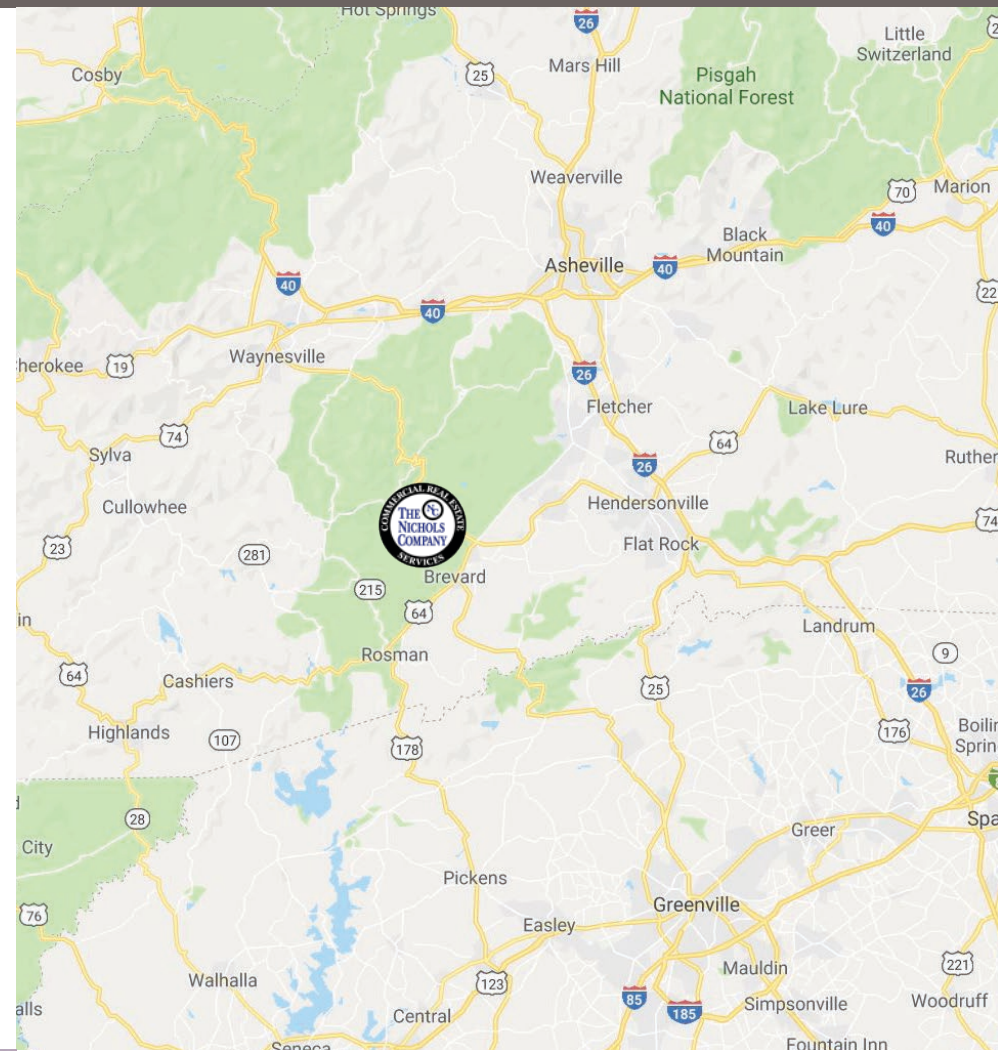
PROPERTY DETAILS

- 63.71 Acres
- Sale Price: \$665,000

PROPERTY FEATURES

- Proximity to neighborhood shopping centers, restaurants and services
- Land located behind Brevard Middle School
- Historic downtown Brevard is less than five minutes away
- Asheville Regional Airport and interstate access within 20 miles
- Convenient access to Pisgah National Forest

[Click Here to View Drone Video](#)



TRANSYLVANIA COUNTY

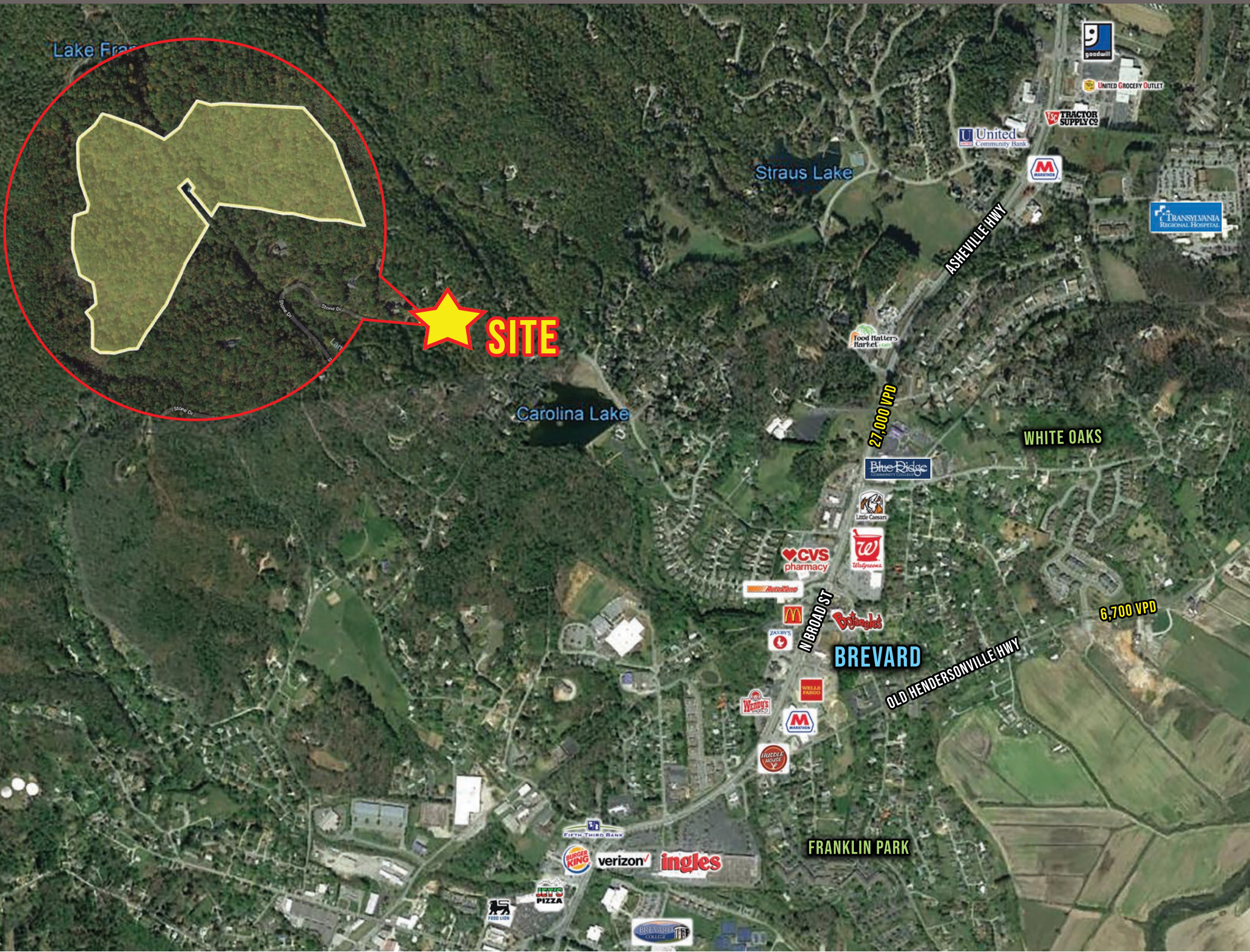
Known as the land of waterfalls, Transylvania County boasts unrivaled access to tens of thousands of acres protected by the State or Federal Government making it a prime location for anglers, paddling, hiking, backpacking, etc. Forbes magazine previously ranked Brevard as one of the 25 places to retire in the United States. The area is also home to numerous restaurants, breweries and the world renowned Brevard Music Center.





View Overlooking Brevard

MARKET OVERVIEW



Lake Francis

Straus Lake

Carolina Lake

SITE

WHITE OAKS

BREVARD

FRANKLIN PARK

ASHEVILLE HWY

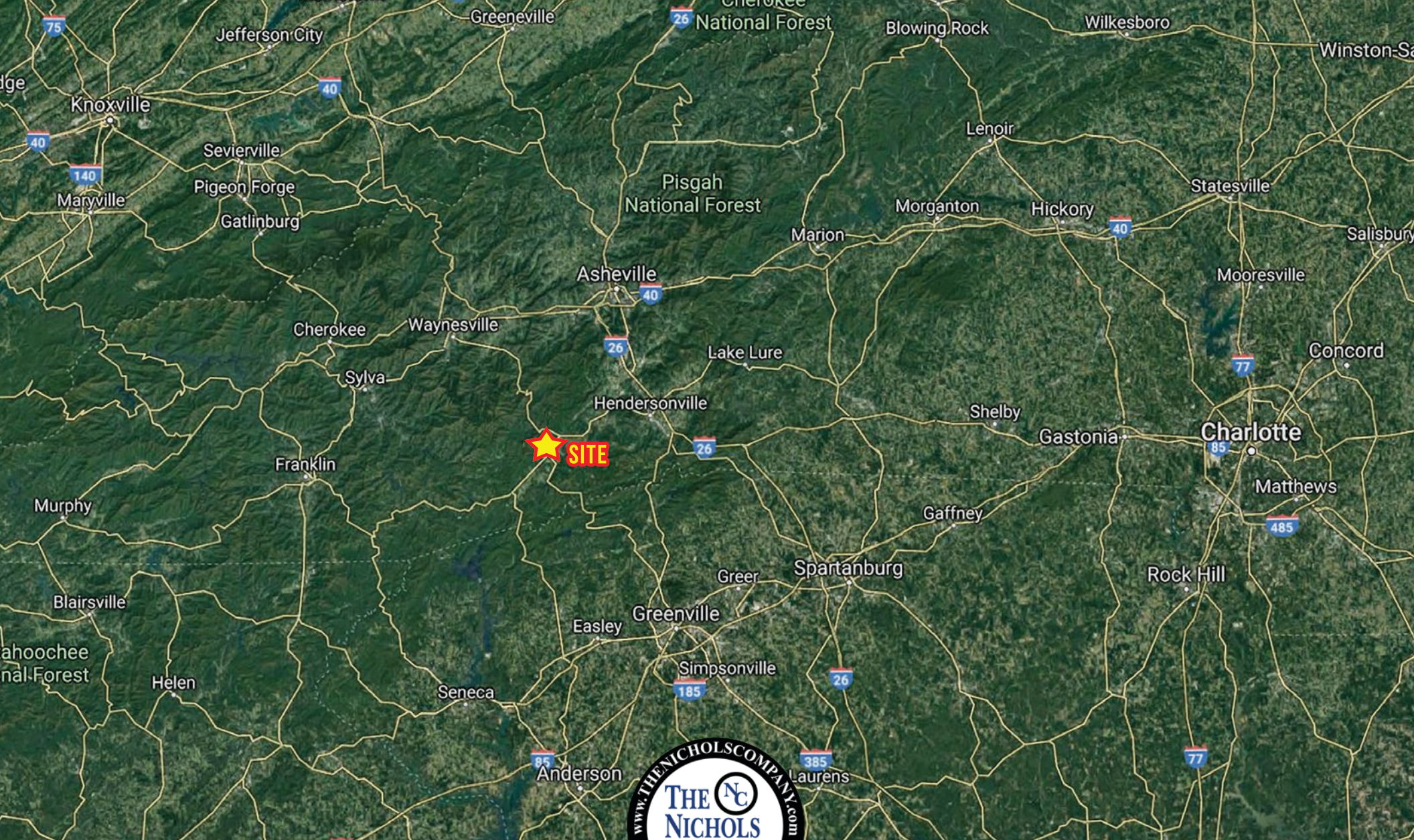
N BROAD ST

OLD HENDERSONVILLE HWY

27,000 VPD

6,700 VPD





JOHN NICHOLS | The Nichols Company | (O) 704.373.9797 | (F) 704.373.9798
Jnichols@thenicholscompany.com | www.thenicholscompany.com
1204 Central Avenue, Suite 201 Charlotte, NC 28204

This information has been obtained from sources believed to be reliable. While we do not doubt its accuracy, we have not verified it and make no guarantee, warranty or representation to independently confirm its accuracy and completeness.