

LAND FOR SALE

1900 BLK. OF THE PLAZA | CHARLOTTE, NC 28205

RARE OPPORTUNITY IN PLAZA MIDWOOD



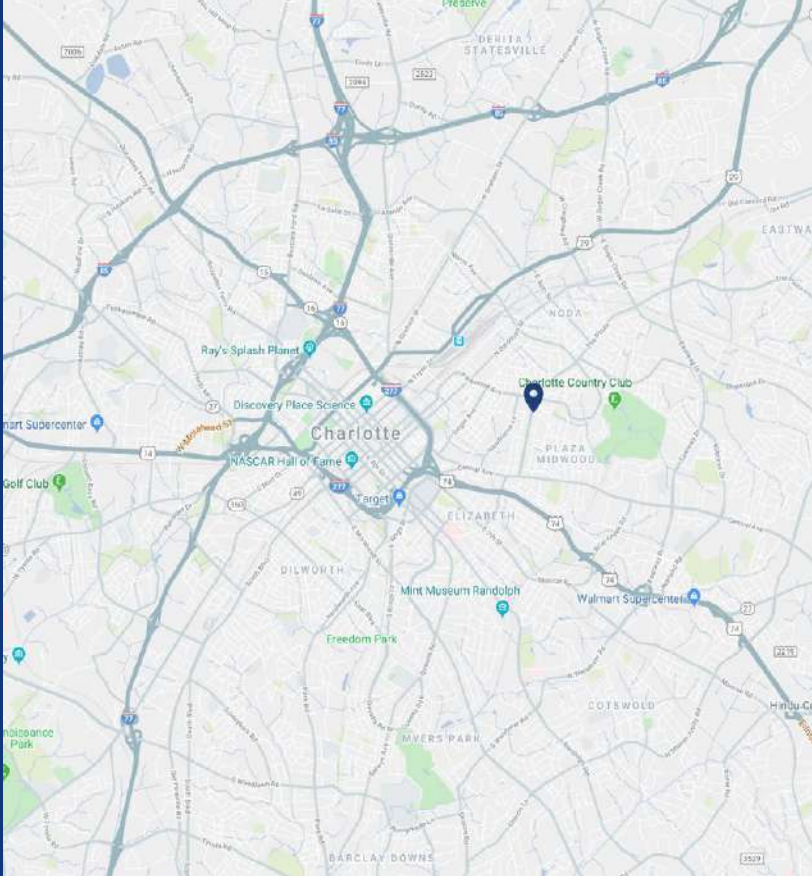
PROPERTY OVERVIEW

LAND FOR SALE

An unbelievable development opportunity in the heart of one of Charlotte's most beautiful and popular neighborhoods - Plaza Midwood. Nestled adjacent to the historic VanLandingham Estate, this ~ 1.7 acre assemblage provides a park-like setting while being just blocks from the many restaurants, shops and other amenities of the Plaza Midwood entertainment district. Recently rezoned (MUDD-O), the site has been approved for up to 22 residential units. A great opportunity in a wonderful location.

PROPERTY DETAILS

Address	1900 Blk. of The Plaza Charlotte, NC 28205
Use	Residential
Available AC	+/- 1.7 Acres For Sale
Zoning	MUDD-O
Traffic Counts	The Plaza
Sale Price	\$2,750,000
Additional Notes	Site has been approved for up to 22 residential units



DEMOGRAPHICS

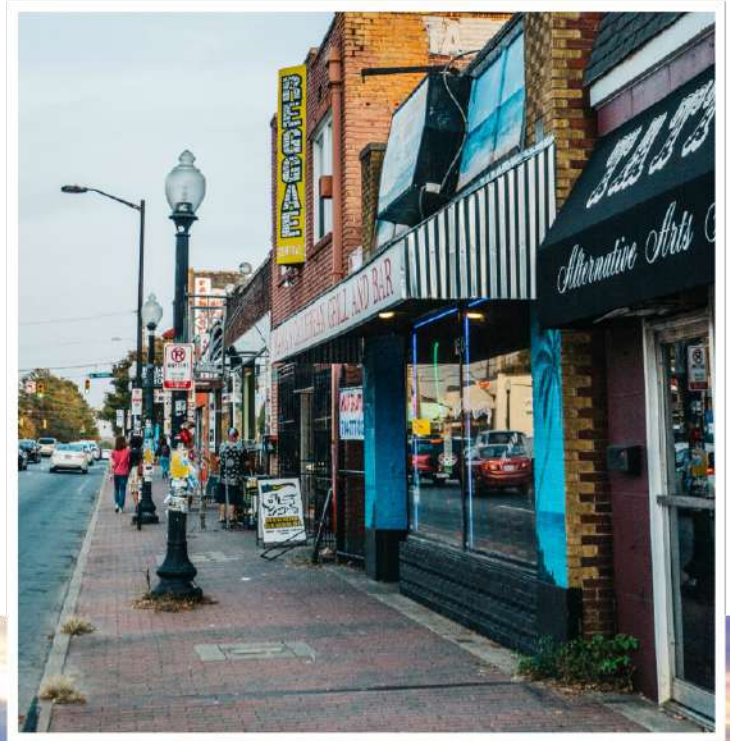
RADIUS	1 MILE	3 MILE	5 MILE
2019 Population	14,023	116,658	288,762
Avg. Household Income	\$102,301	\$95,823	\$86,288
Median Household Income	\$67,408	\$57,485	\$51,559
Households	6,534	52,319	119,894
Daytime Employees	6,005	134,187	206,146

MARKET OVERVIEW



PLAZA MIDWOOD CHARLOTTE, NC

Plaza Midwood is located approximately one mile east of Uptown Charlotte. Known for its eclectic vibe, it boasts a mixture of art galleries, locally owned shops and unique restaurants. Recent years have witnessed its resurgence as a vibrant, highly sought after, neighborhood with numerous multi-family developments being completed.



CONTACT

MIKE SULLIVAN

msullivan@thenicholscompany.com
704.373.9797



THE NICHOLS COMPANY

Website

www.TheNicholsCompany.com

Phone

(O) 704.373.9797
(F) 704.373.9798

Address

1204 Central Avenue, Suite 201
Charlotte, NC 28204

This information has been obtained from sources believed to be reliable. While we do not doubt its accuracy, we have not verified it and make no guarantee, warranty or representation to independently confirm its accuracy and completeness.

