

133 VERA ROAD

LEXINGTON, SOUTH CAROLINA 29072

Available for Sublease

5,340 SF OFFICE/WAREHOUSE
CLOSE PROXIMITY TO DOWNTOWN LEXINGTON



CONTACT FOR DETAILS

TRACY EFIRD

(704) 373-9797

Tracy@TheNicholsCompany.com



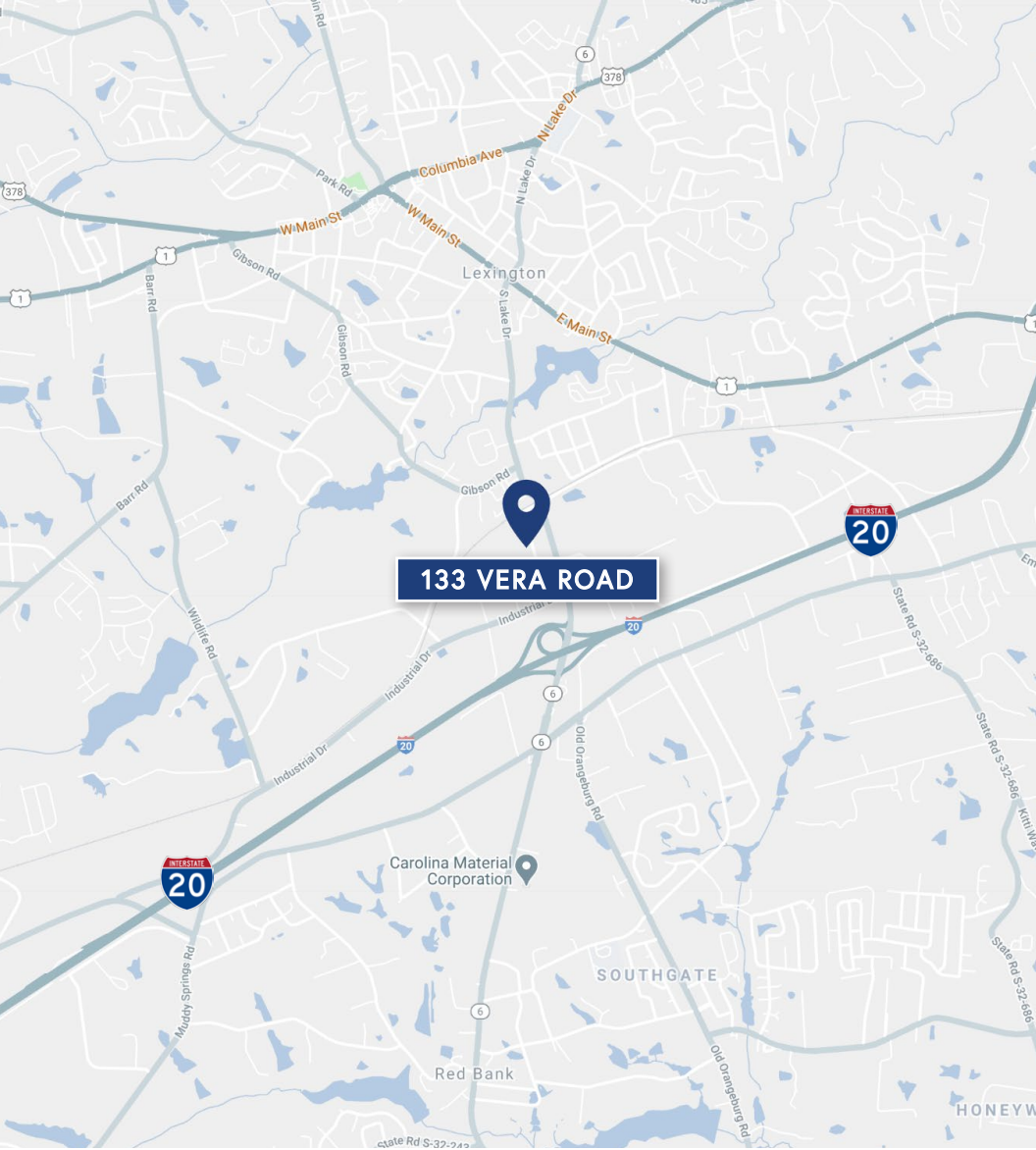
PROPERTY OVERVIEW

133 VERA ROAD

Office/warehouse space for sublease less than 1 mile to I-20 and close proximity to Downtown Lexington, SC. The space features dock and drive-in for easy access loading.

PROPERTY DETAILS

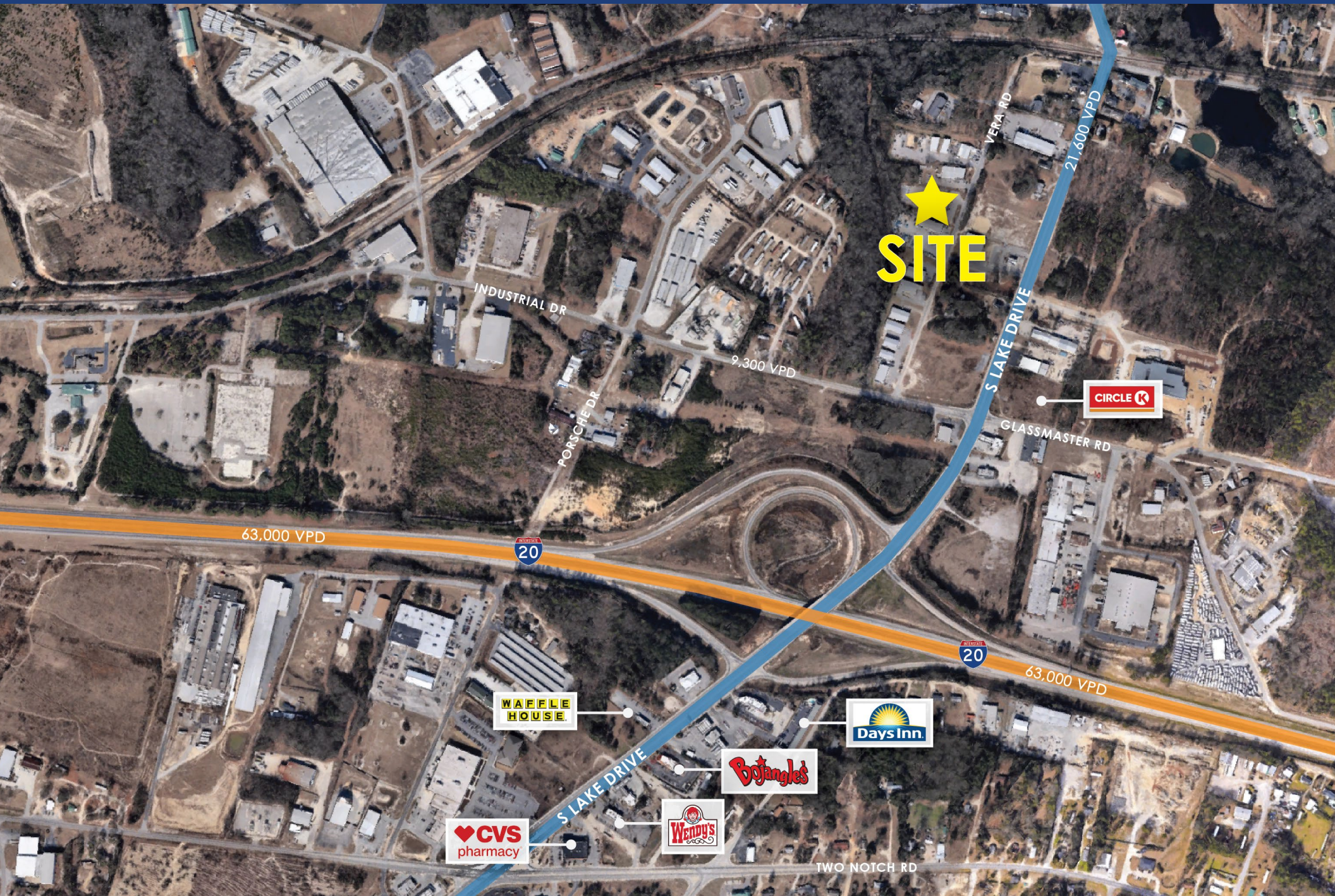
Address	133 Vera Drive Lexington, SC 29072
Square Footage	5,340 SF Available for Sublease
Parking	Ample parking
Features	Dock and drive-in
Lease Rate	Call for Leasing Details
Additional Details	Less than 1 mile to I-20



DEMOGRAPHICS

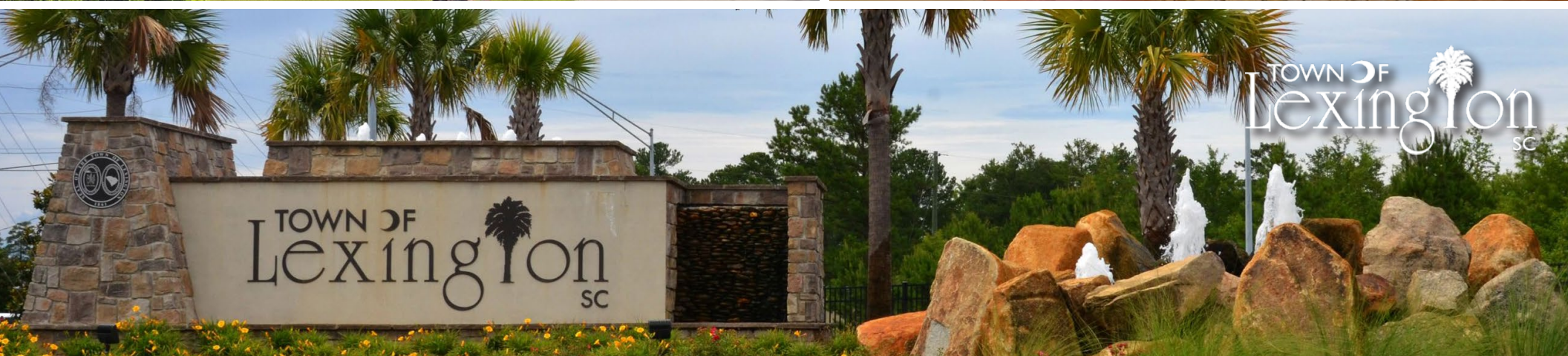
RADIUS	1 MILE	3 MILE	5 MILE
2020 Population	3,235	35,160	91,014
Avg. Household Income	\$60,046	\$84,045	\$87,881
Median Household Income	\$51,777	\$64,978	\$70,018
Households	1,533	13,807	34,100
Daytime Employees	3,219	17,181	28,321

MARKET OVERVIEW



LEXINGTON SOUTH CAROLINA

Lying southwest of South Carolina's capital, Lexington is a city rich with history and entertainment. It continues to grow independent of neighboring Columbia by offering visitors a unique destination with small-town charm. Lexington is just minutes from the state's largest university, the University of South Carolina. The city offers fishing at Lake Murray, first-class hotels and inns, gourmet and casual dining, recreational activities for the whole family and great shopping.



CONTACT FOR DETAILS

TRACY EFIRD

(704) 373-9797

Tracy@TheNicholsCompany.com



THE NICHOLS COMPANY

Website

www.TheNicholsCompany.com

Phone

Office (704) 373-9797

Fax (704) 373-9798

Address

1204 Central Avenue, Suite 201

Charlotte, NC 28204

This information has been obtained from sources believed to be reliable. While we do not doubt its accuracy, we have not verified it and make no guarantee, warranty or representation to independently confirm its accuracy and completeness.

