



# Cavalaris Village

911 East Morehead Street | Charlotte, NC 28204



## Available for Lease

+/- 5,020 SF Retail Space in the Heart of Dilworth



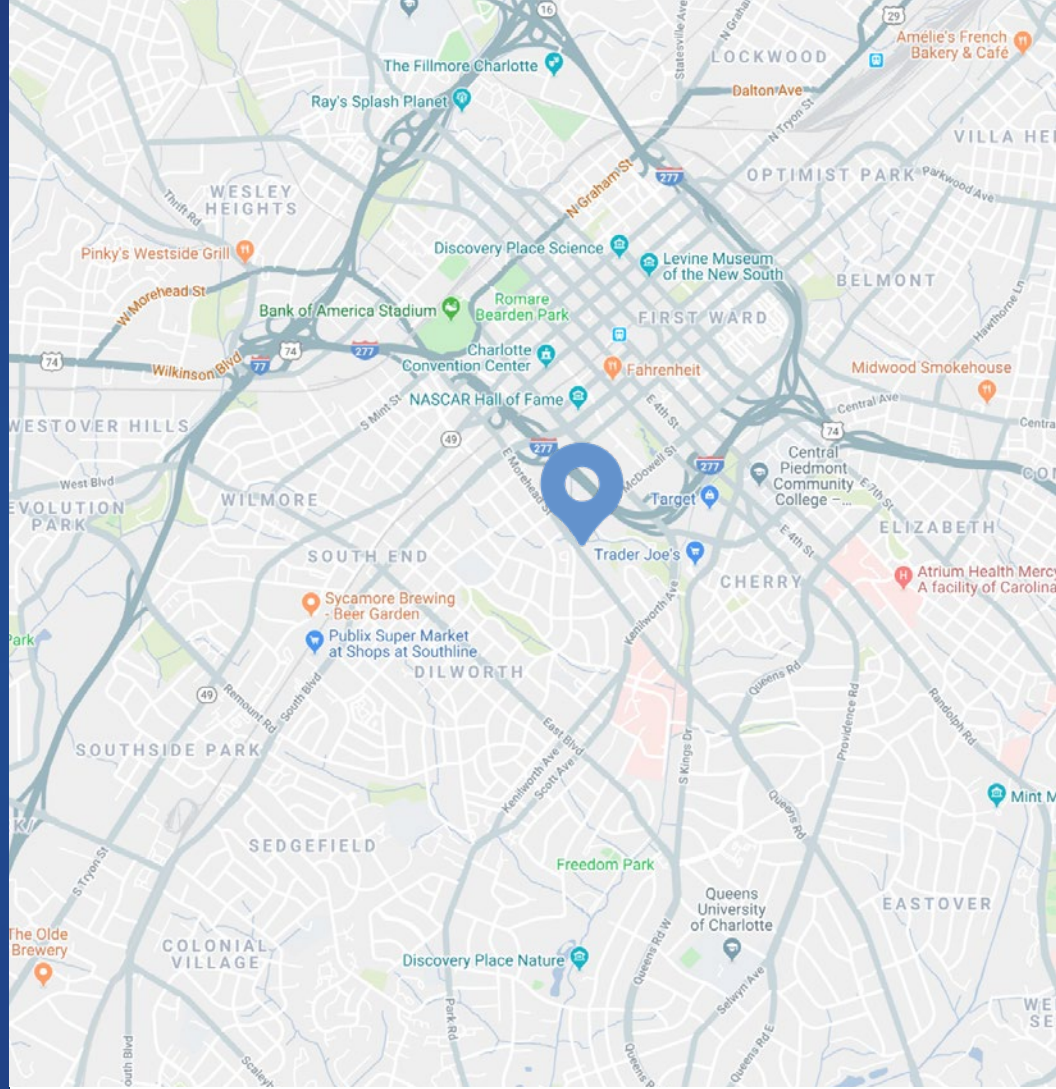
## Property Overview

# Cavalaris Village Available for Lease

Cavalaris Village is an upscale retail strip center in the heart of midtown's Dilworth neighborhood along East Morehead Street, one of Charlotte's premier thoroughfares to and from uptown Charlotte. The center is located at the lighted intersection of East Morehead Street and South McDowell Street on the fringe of Uptown Charlotte.

## Property Details

<b>Address</b>	911 East Morehead Street   Charlotte, NC 28204
<b>Availability</b>	+/- 5,020 SF Available for Lease (*Can be subdivided) 2,345 SF Upper Level   2,675 SF Lower Level Available space is two levels, there is an opportunity to lease only the upper level portion of the space
<b>GLA</b>	+/- 46,662 SF
<b>Zoning</b>	B-1
<b>Parking</b>	Over 100 parking spaces
<b>Traffic Counts</b>	East Morehead Street   26,000 VPD
<b>Lease Rate</b>	Call for Leasing Details

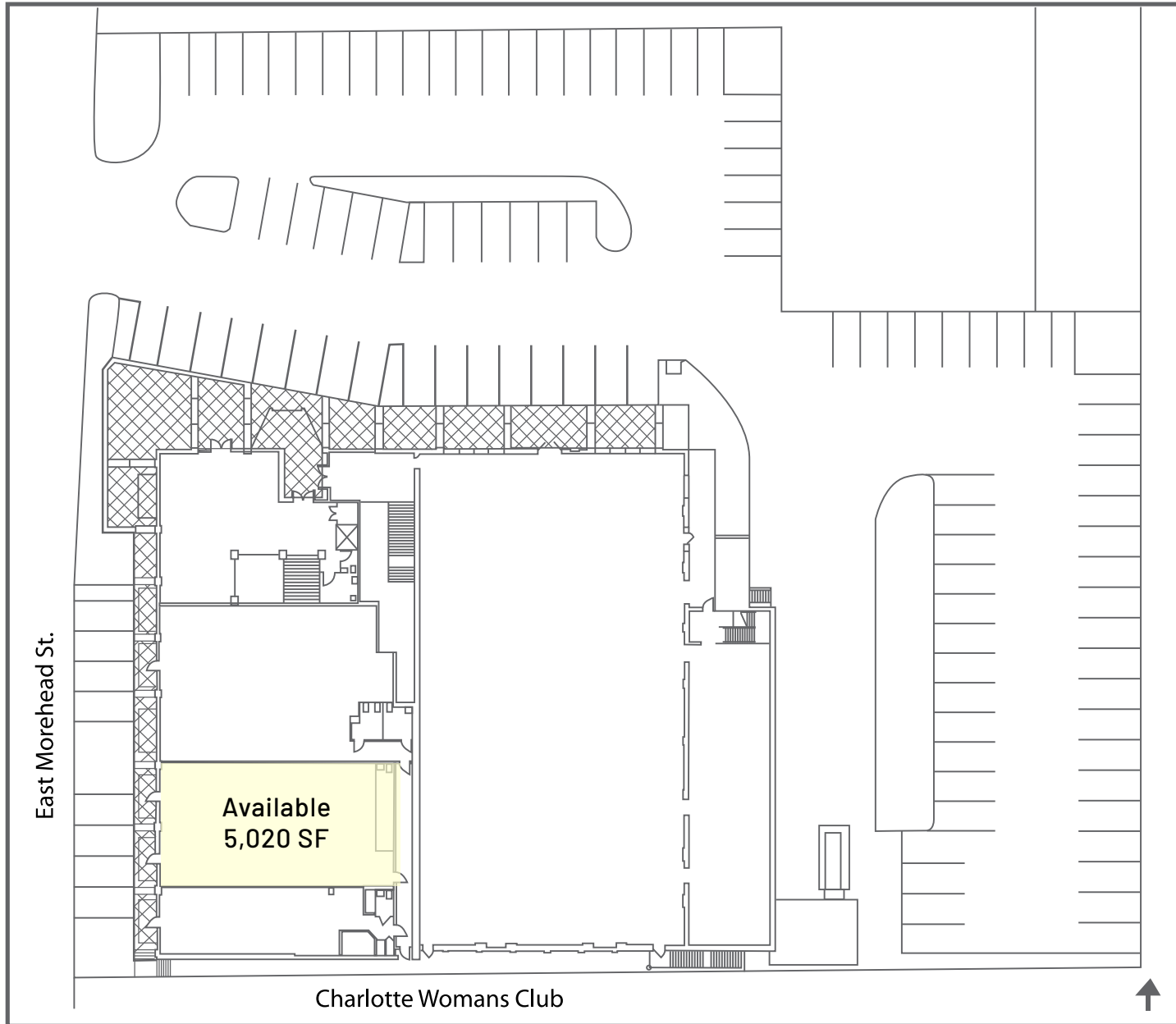


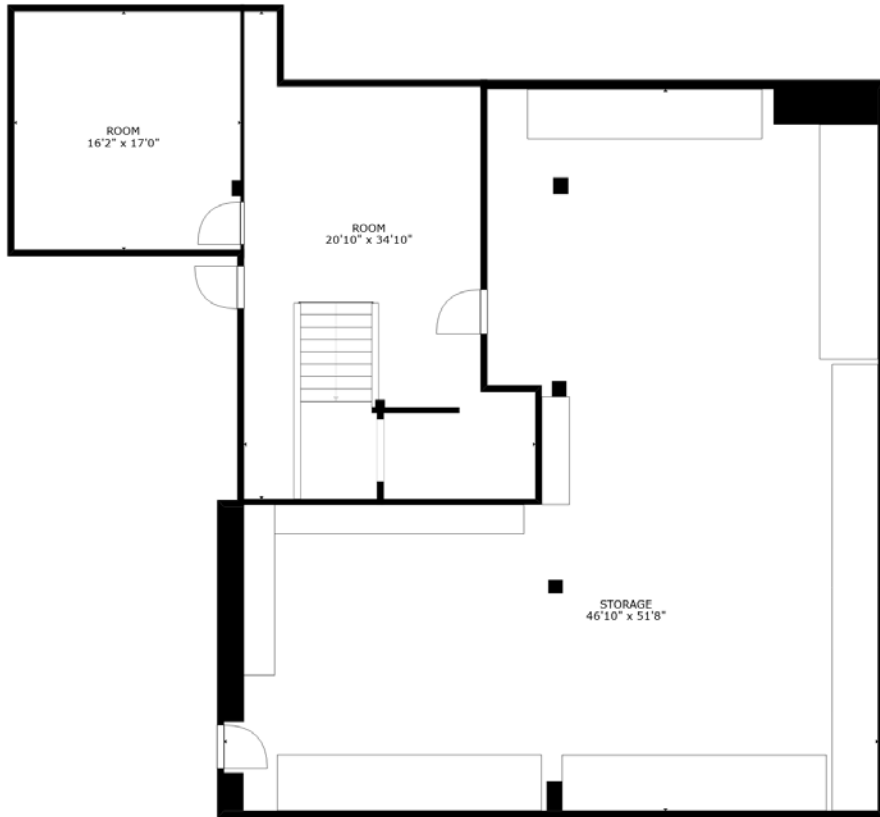
## Demographics

RADIUS	1 MILE	3 MILE	5 MILE
<b>2021 Population</b>	19,917	130,168	265,563
<b>Avg. Household Income</b>	\$123,198	\$114,874	\$100,937
<b>Median Household Income</b>	\$88,713	\$71,895	\$60,810
<b>Households</b>	11,559	61,134	116,959
<b>Daytime Employees</b>	77,656	159,136	263,355

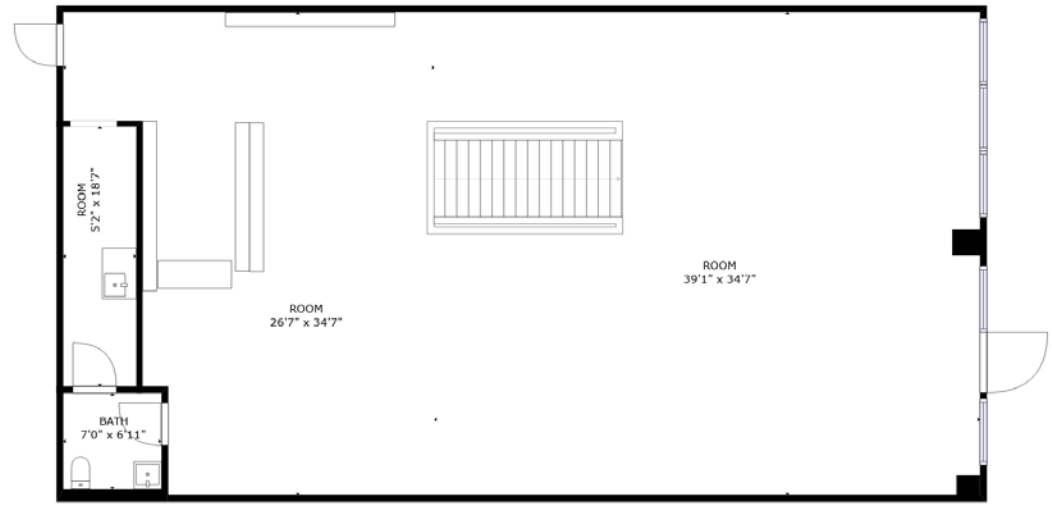
[Drone Video](#) [Virtual Tour](#)

South McDowell St.





Lower Level



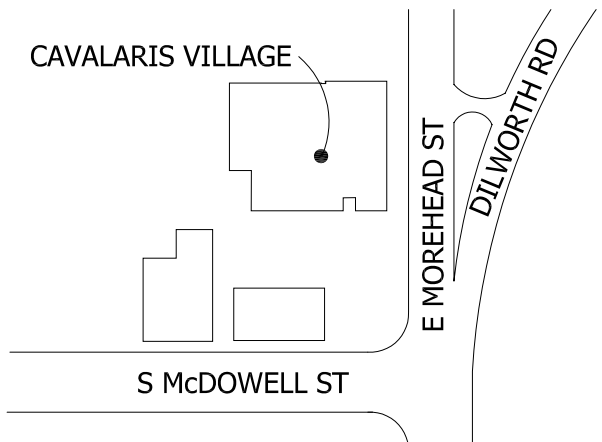
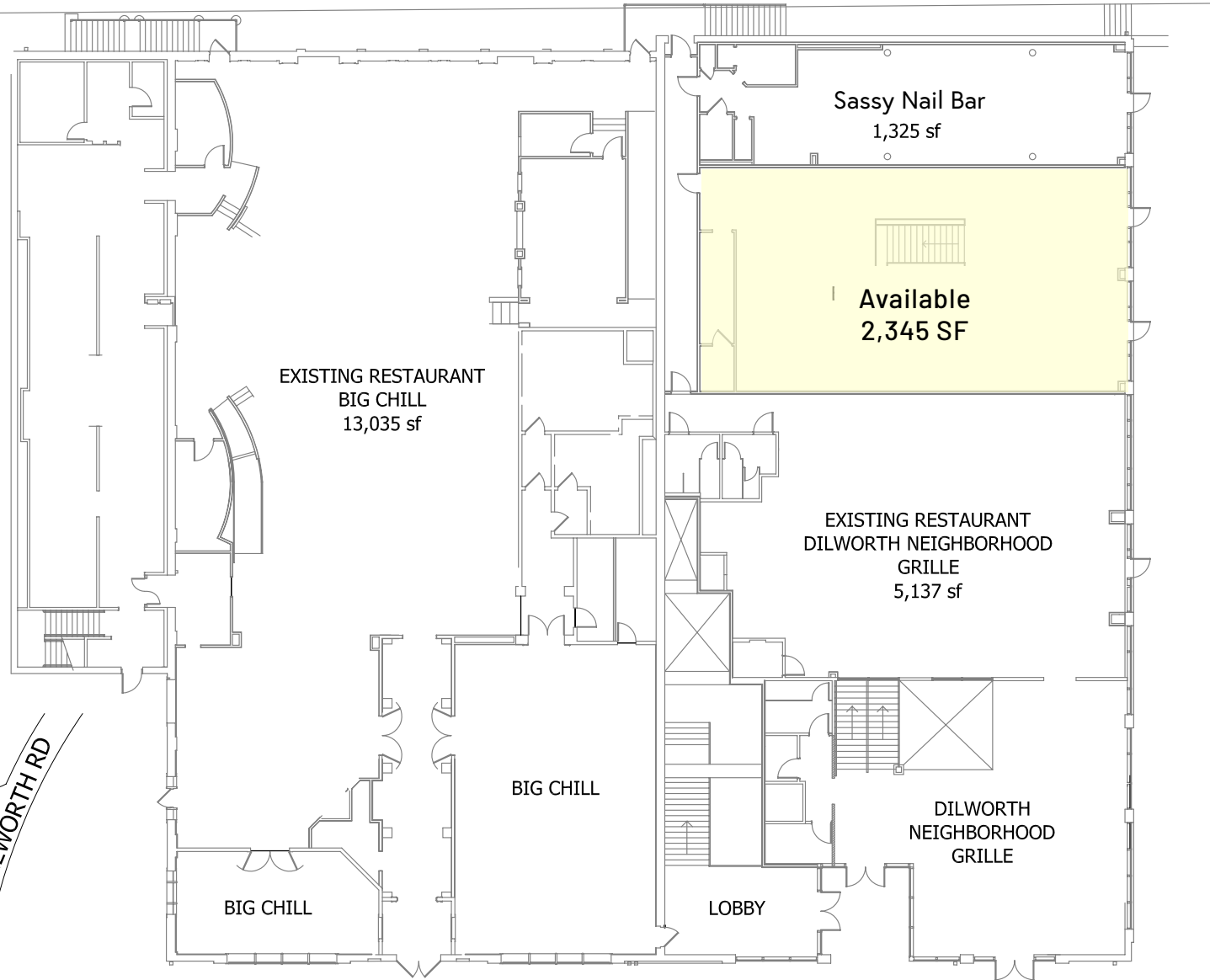
Upper Level

+/- 5,020 SF Available

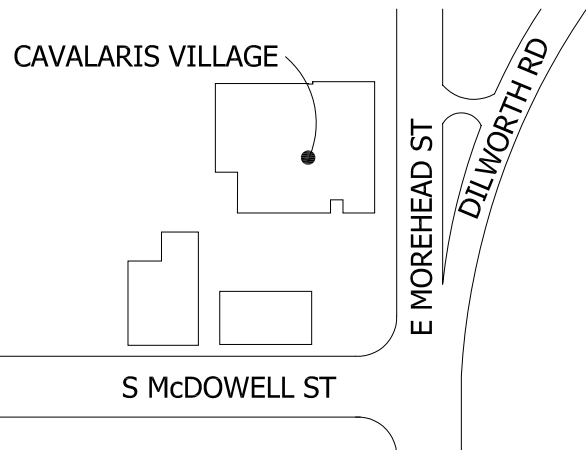
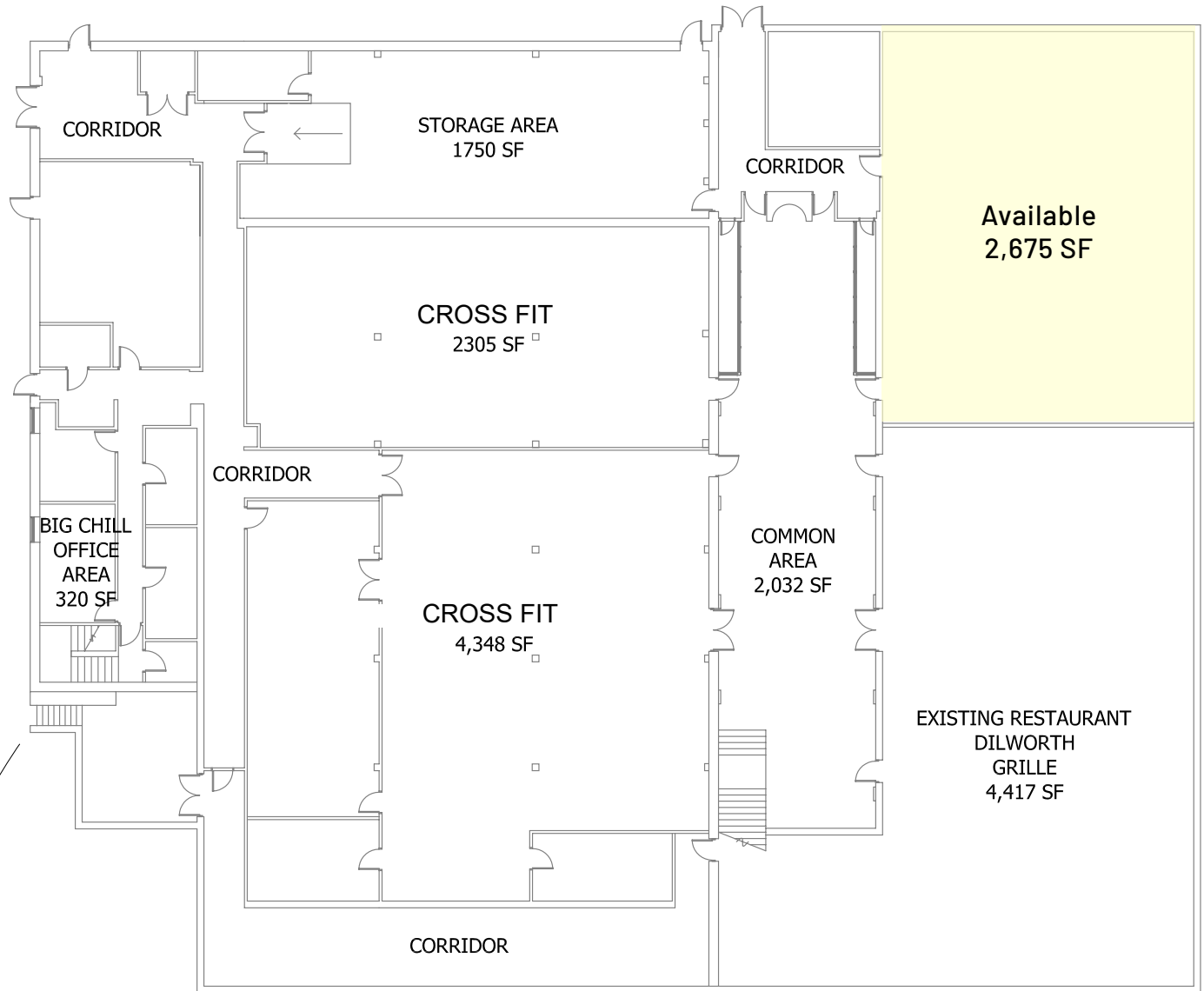


# Floor Plan | Upper Level

GROSS LEASABLE AREA : 21,842  
UPPER LEVEL SQUARE FOOTAGE: 23,208  
TOTAL BUILDING SQUARE FOOTAGE : 46,606



GROSS LEASABLE AREA : 15,815  
LOWER LEVEL SQUARE FOOTAGE: 23,398  
TOTAL BUILDING SQUARE FOOTAGE : 46,606





Property Photos



Available Space (Upper Level)



Available Space (Upper Level)



Available Space (Upper Level)



# Dilworth

Charlotte, NC

Beloved for its charming bungalows bordered by white picket fences, picturesque Dilworth was Charlotte's first streetcar suburb, which explains why a large portion of the neighborhood is listed on the National Register of Historic Places. Today, block parties, yard sales and festivals pop up in this pedestrian-friendly enclave, seated just minutes from Center City and blocks from South End. Although year-round run clubs, fall pumpkin patches and Christmas tree lots give compact Dilworth its cozy-yet-spirited vibe, much of its character draws on its historical qualities.











Contact for Details

## Josh Beaver

(704) 749 - 5726

josh@thenicholscompany.com



### Website

[www.TheNicholsCompany.com](http://www.TheNicholsCompany.com)

### Phone

Office (704) 373-9797

Fax (704) 373-9798

### Address

1204 Central Avenue, Suite 201

Charlotte, NC 28204

This information has been obtained from sources believed to be reliable. While we do not doubt its accuracy, we have not verified it and make no guarantee, warranty or representation to independently confirm its accuracy and completeness.