



# Country Club Commons

1620 East Roosevelt Blvd. | Monroe, NC 28112



**Available for Lease**  
+/- 1,200 SF Retail Space



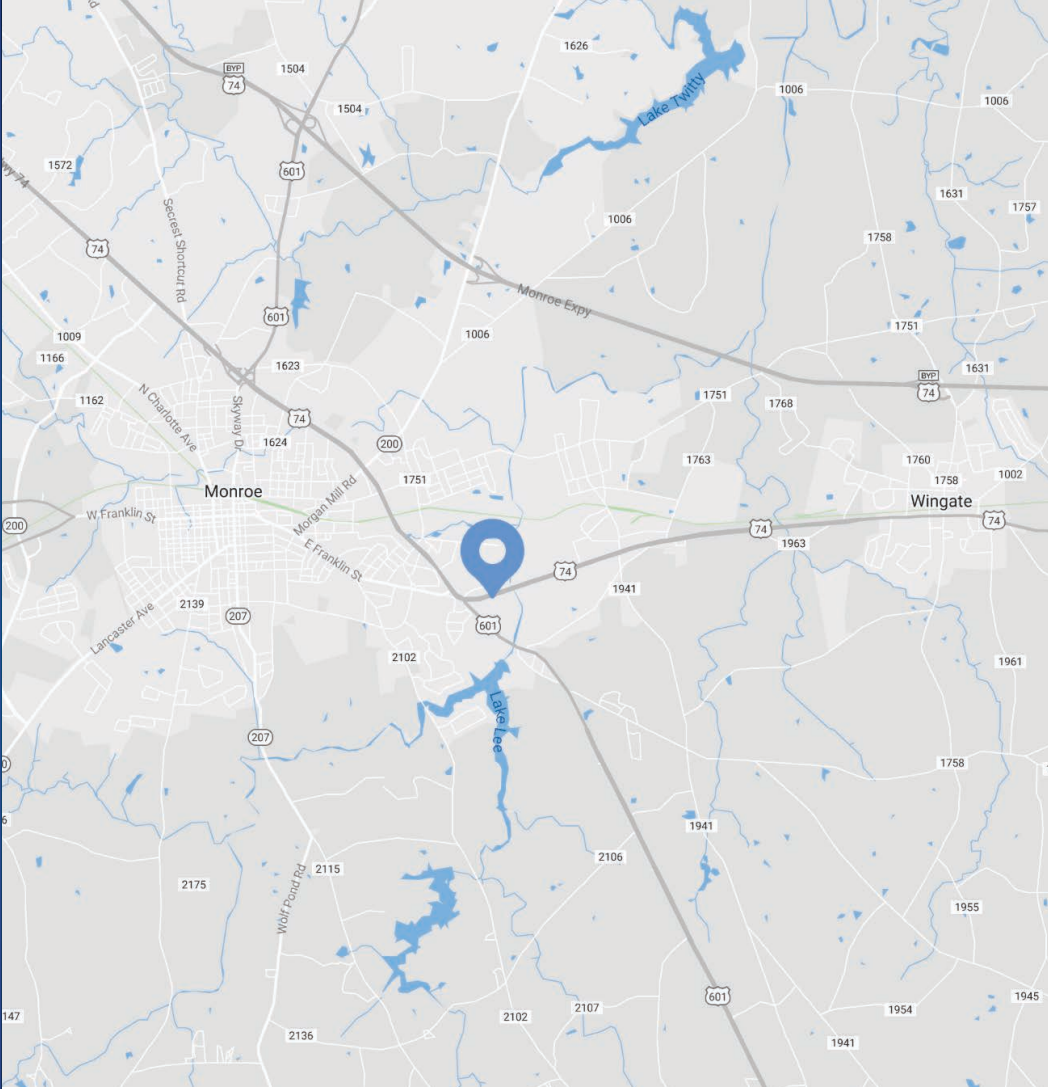
## Property Overview

# Country Club Commons Available for Lease

+/- 1,200 SF retail space available for lease in Country Club Commons in Monroe, NC. Located directly on Hwy 74 and in close proximity to Atrium Health's Union Hospital, this is a great opportunity to lease space in an active shopping center anchored by Southern States.

## Property Details

Address	1620 East Roosevelt Blvd.   Monroe, NC 28112
Availability	+/- 1,200 SF Retail for Lease
GLA	+/- 45,080 SF
Year Built	1994
Zoning	GB (General Business)
Signage	Pylon signage available
Co-Tenants	Southern States, Papa John's Pizza
Parking	Ample parking
Visibility	Excellent visibility on Hwy 74
Traffic Counts	Hwy 74 - 47,000 VPD Pageland Hwy - 19,500 VPD
Lease Rate	Call for Leasing Details



## Demographics

RADIUS	1 MILE	3 MILE	5 MILE
2022 Population	2,422	19,400	38,166
Avg. Household Income	\$104,332	\$79,857	\$83,824
Median Household Income	\$65,101	\$52,401	\$56,986
Households	734	6,559	13,095
Daytime Employees	3,657	14,196	22,333



Drone Video





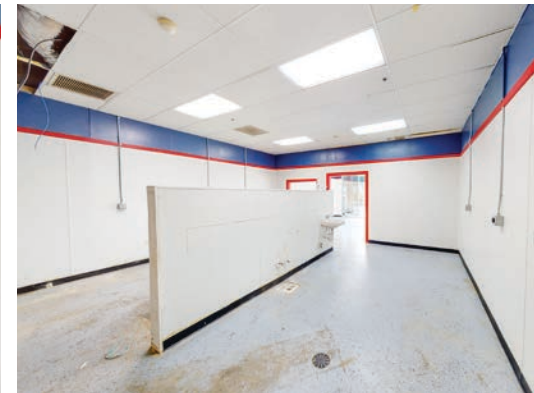
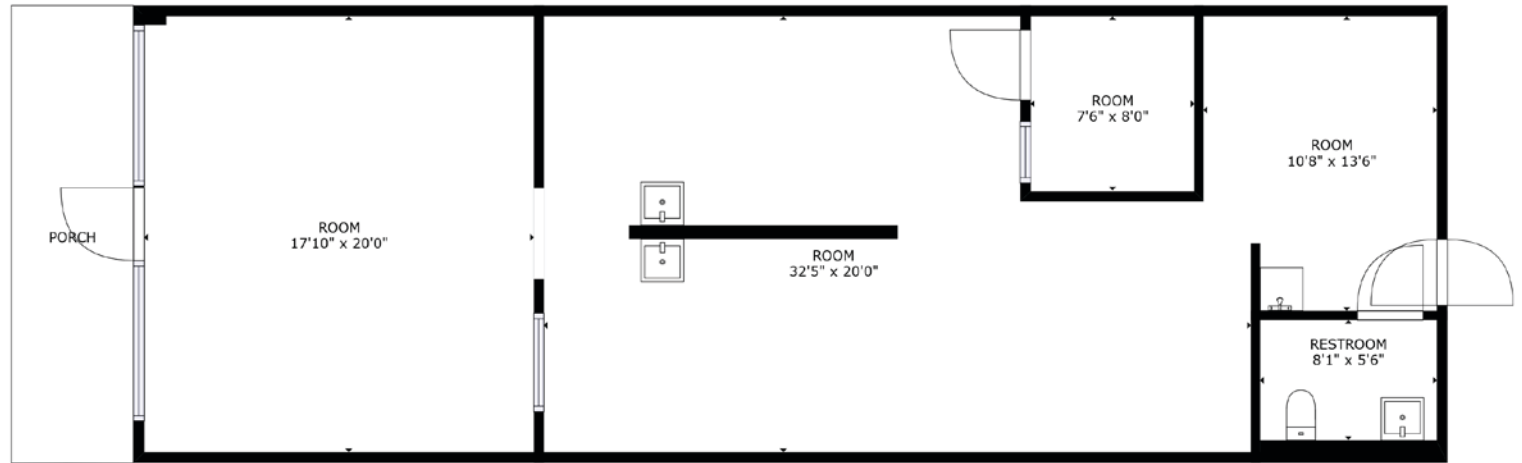
Tenant Roster		
1	Papa John's Pizza	1,200 SF
2	Available	1,200 SF
3	Southern States	42,680 SF



## Suite 2

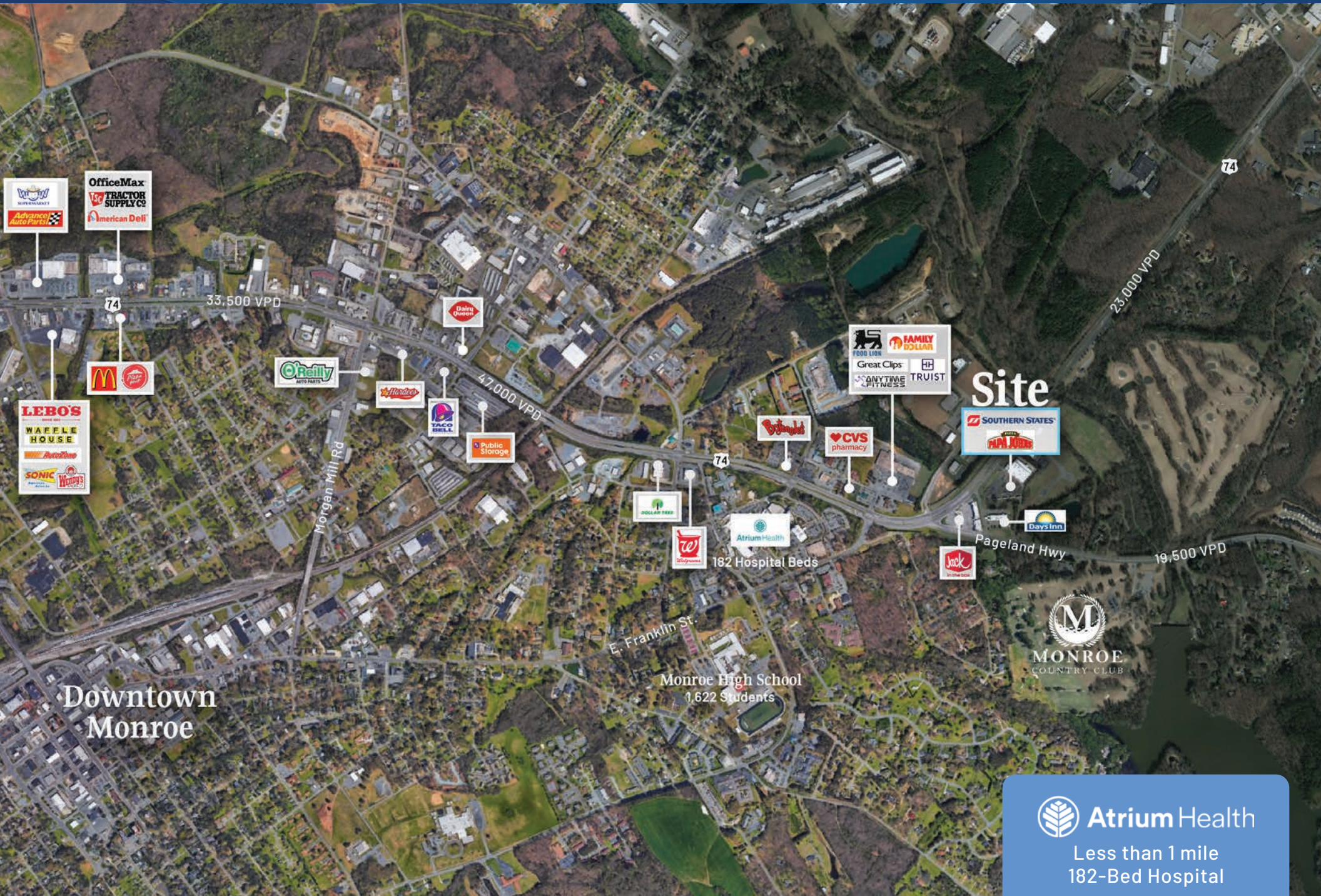
Available  
1,200 SF

 Virtual Tour





## Market Overview





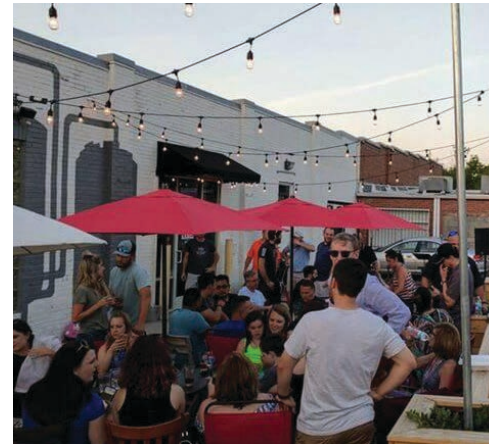
# Monroe

## North Carolina

The city of Monroe is a vibrant and progressive city that serves as the hub of retail, government, culture, and industry in Union County. From the large Historic District complete with stately homes and a newly revitalized downtown to its industrial core attracting businesses from across the globe to the ever-growing retail marketplace, Monroe has something to offer to all.

The downtown area is currently in the throes of a revitalization plan that has been spearheaded by city leaders. The plan is geared to increase traffic to downtown businesses as well as to show off the charm of the tree-lined streets and make the downtown area a destination for families. Several activities like live music, antique car cruise-ins, outdoor movies, to name just a few, are held throughout the year. The downtown at times also finds itself the center of attention as film crews use the backdrop of the Historic Union County Courthouse and charm of Main Street in major motion pictures.

South Piedmont Community College strengthens the city's economic and educational future. SPCC has a campus on Old Charlotte Highway and offers numerous degree programs along with continuing education, college transfer, basic skills, and workforce training.







Contact for Details

**Josh Beaver**

(704) 749-5726

[josh@thenicholscompany.com](mailto:josh@thenicholscompany.com)



**Website**

[www.TheNicholsCompany.com](http://www.TheNicholsCompany.com)

**Phone**

Office (704) 373-9797

Fax (704) 373-9798

**Address**

1204 Central Avenue, Suite 201

Charlotte, NC 28204

This information has been obtained from sources believed to be reliable. While we do not doubt its accuracy, we have not verified it and make no guarantee, warranty or representation to independently confirm its accuracy and completeness.