



1721 Kenilworth Avenue

Charlotte, North Carolina 28203

Available

GALLERY **HARRIS HOLT** FRAMING

Available for Lease

+/- 1,560 SF Urban Core Retail

Property Overview

1721 Kenilworth Avenue Available for Lease

Urban core retail for lease in the heart of Dilworth along Kenilworth Avenue. The building is steps away from East Boulevard, adjacent to a Harris Teeter shopping center, and surrounded by local shops, restaurants, and everything the popular neighborhood of Dilworth has to offer. With a convenient location in Charlotte's urban core, this is an excellent leasing opportunity.

Property Details

Address 1721 Kenilworth Avenue | Charlotte, NC 28203

Availability +/- 1,560 SF Urban Core Retail for Lease

GLA +/- 3,339 SF Multi-Tenant Building

Use Urban Core Retail

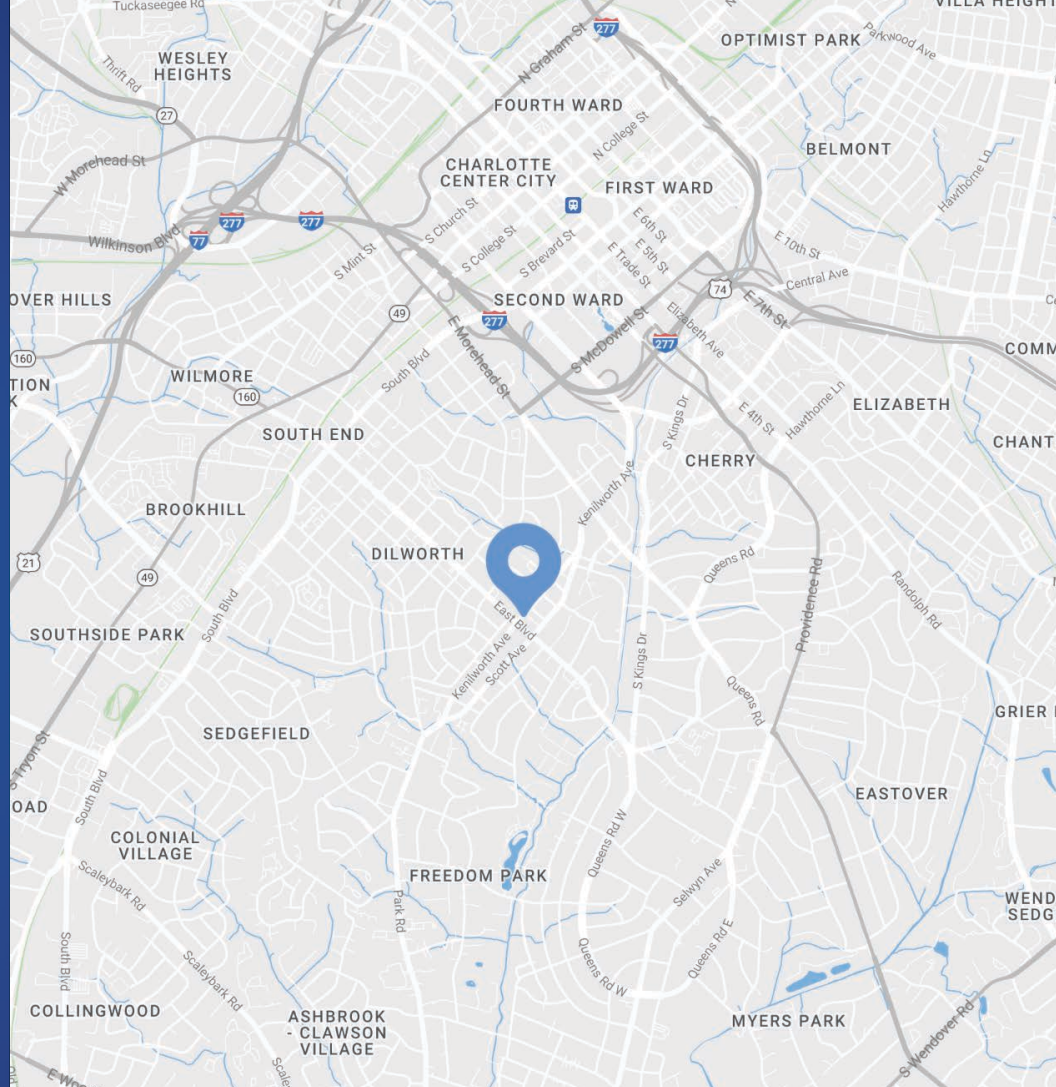
Parking 10 surface spaces

Zoning B-1

Frontage Kenilworth Avenue | 61 FT

Traffic Counts Kenilworth Avenue | 10,500 VPD

Lease Rate Call for Leasing Details



Demographics

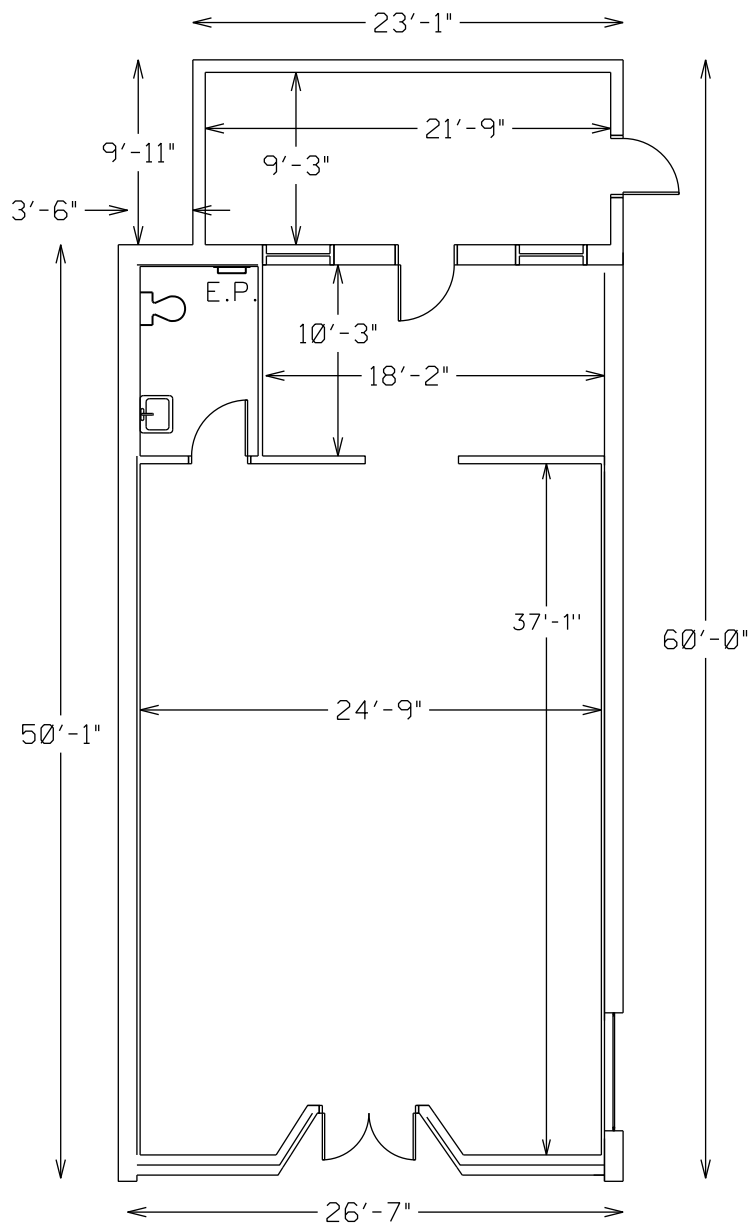
RADIUS	1 MILE	3 MILE	5 MILE
2022 Population	15,269	126,158	274,262
Avg. Household Income	\$173,990	\$135,739	\$116,819
Median Household Income	\$114,700	\$86,611	\$71,117
Households	7,763	65,395	129,226
Daytime Employees	33,916	166,645	272,816



Available

Urban Core Retail
+/- 1,560 SF

 Virtual Tour



Dilworth

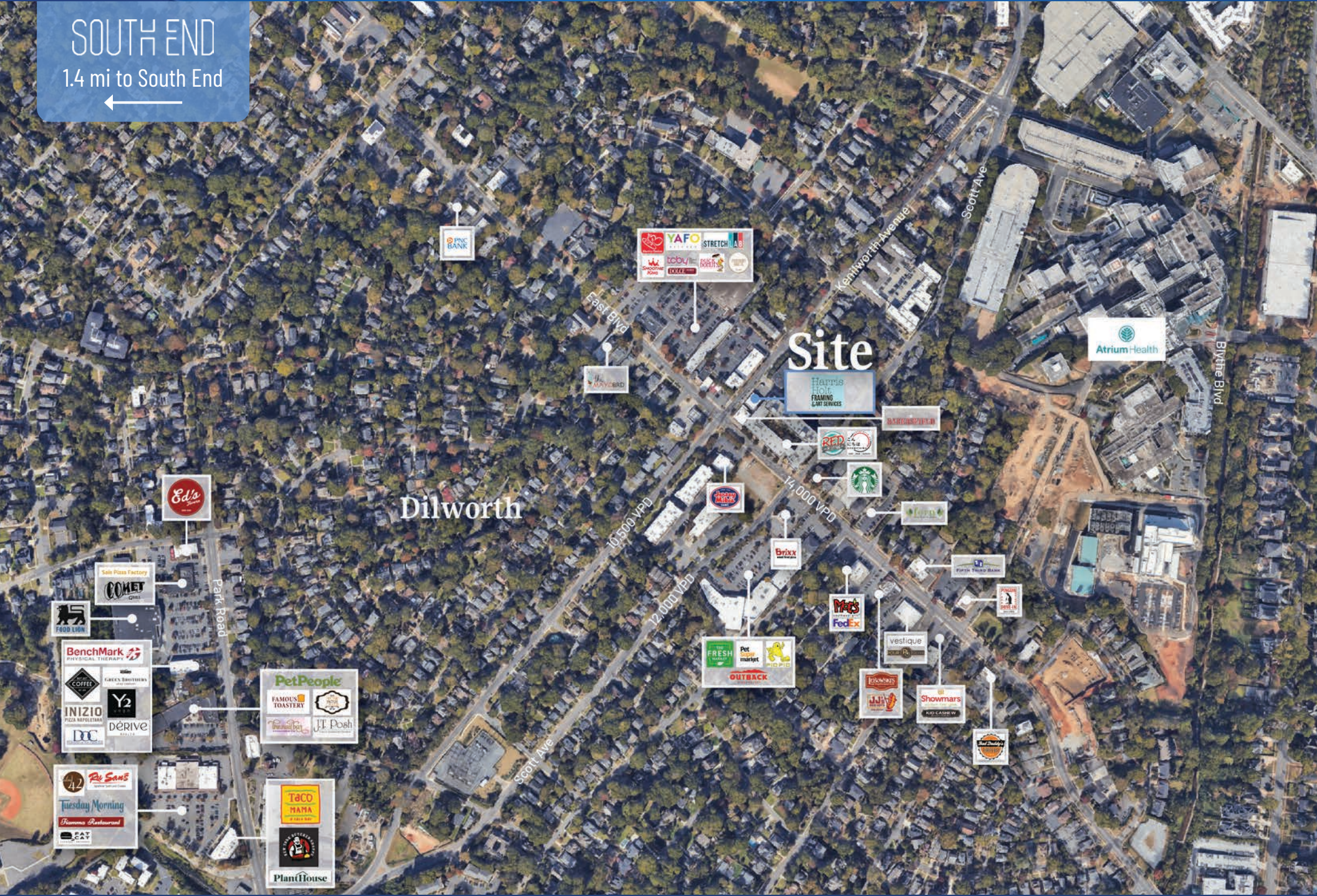
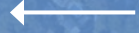
Charlotte, NC

Beloved for its charming bungalows bordered by white picket fences, picturesque Dilworth was Charlotte's first streetcar suburb, which explains why a large portion of the neighborhood is listed on the National Register of Historic Places. Today, block parties, yard sales and festivals pop up in this pedestrian-friendly enclave, seated just minutes from Center City and blocks from South End. Although year-round run clubs, fall pumpkin patches and Christmas tree lots give compact Dilworth its cozy-yet-spirited vibe, much of its character draws on its historical qualities.



SOUTH END

1.4 mi to South End



PNC BANK

YAF
STRETCH LAB
Smoove Juice
zoby
ROKSH

East Blvd

MAYOR

Site

Harris Holt
FRAMING
CART SERVICES

Atrium Health

Bivens Blvd

Dilworth

10,500 VPD

12,000 VPD

14,000 VPD

Ed's

Sole Pizza Factory

COMET

FOOD LION

BenchMark
PHYSICAL THERAPY

COFFEE
GREEN BROTHERS

INIZIO
PIZZA REFINERIA

DERIVE

Re Sans

Tuesday Morning
Pizzeria Restaurant

TACO MAMA

PlantHouse

PetPeople

FAMOUS TOASTERY

JJ Posh

FRESH
Pet market
OUTBACK

Brix

Mc's
FedEx

LEONARD'S
JJ's

Showmars
KID CARE W

Star Charity

RED

Starbucks

Green

First Trust Bank

WALSH'S
DRILL IN

BANKERSFIELD

Scott Ave

Kentworth Avenue

Park Road

Scott Ave



Contact for Details

Josh Beaver

(704) 373 - 9797

josh@thenicholscompany.com



Website

www.TheNicholsCompany.com

Phone

Office (704) 373-9797

Fax (704) 373-9798

Address

1204 Central Avenue, Suite 201

Charlotte, NC 28204

This information has been obtained from sources believed to be reliable. While we do not doubt its accuracy, we have not verified it and make no guarantee, warranty or representation to independently confirm its accuracy and completeness.