



Gateway Commons

2000 Hwy 160 | Fort Mill, SC 29708



Available for Lease
+/- 1,420 SF Retail Space

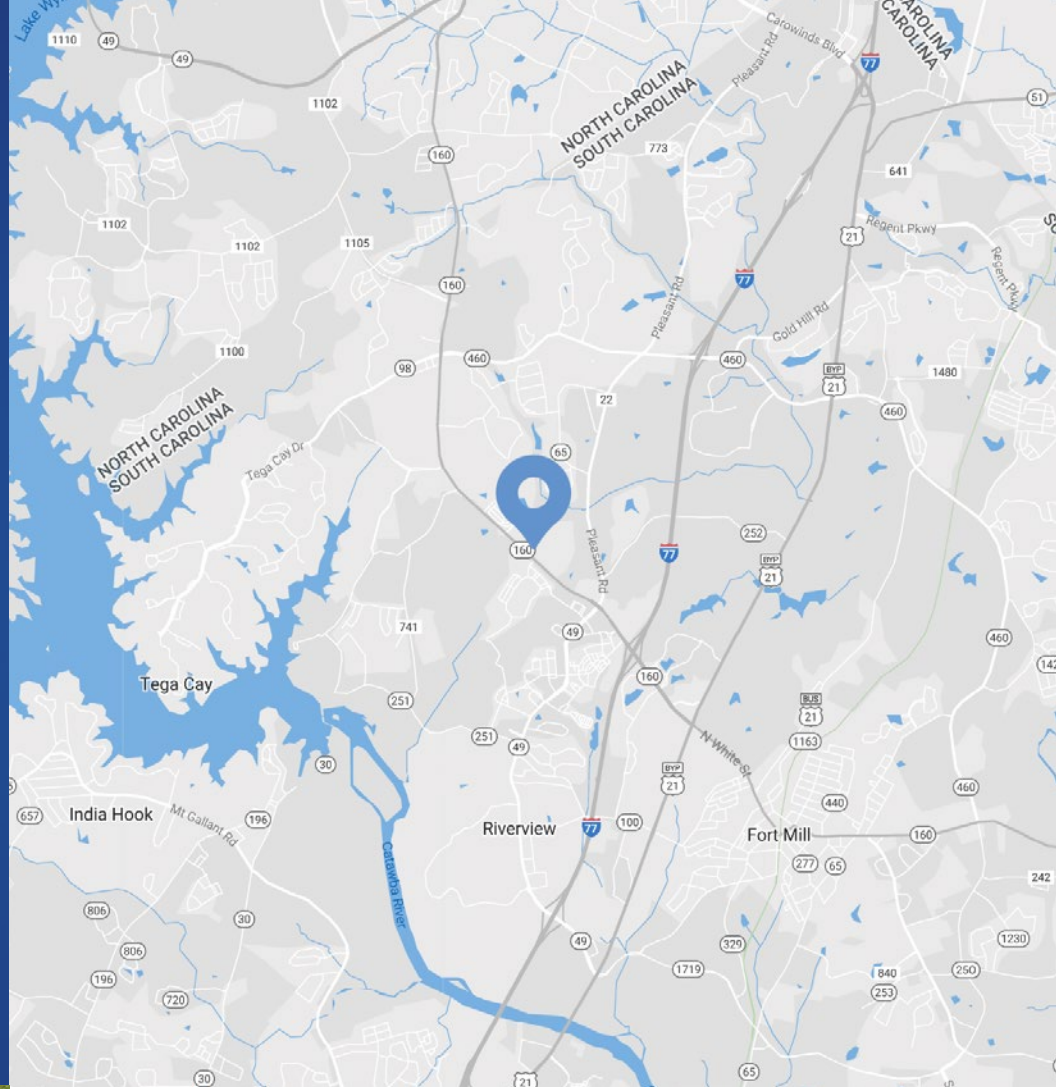
Property Overview

Gateway Commons Available for Lease

Retail for lease on Hwy 160 in Fort Mill, SC. The building is adjacent to Brayden Village, near a Harris Teeter shopping center, and Baxter Village. With a convenient location only 1 mile from I-77 (Exit 85), this is an excellent leasing opportunity.

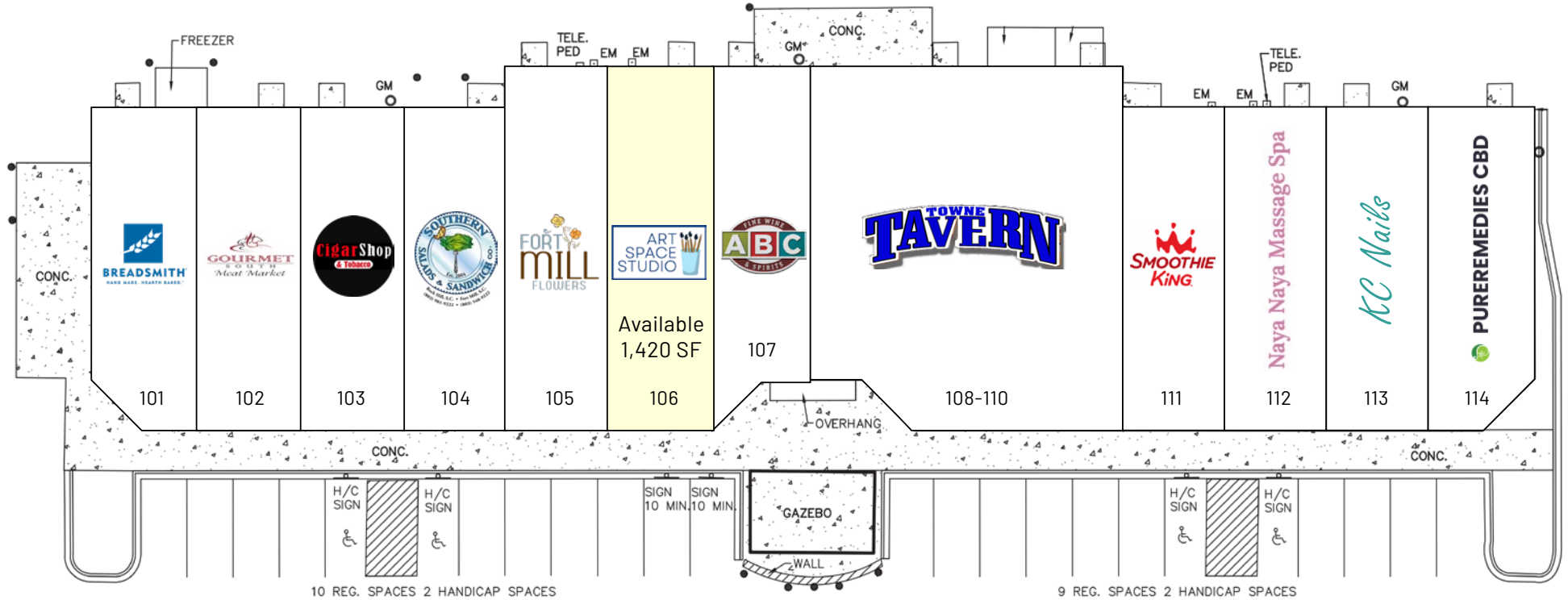
Property Details

Address	2000 Hwy 160 Fort Mill, SC 29708
Availability	+/- 1,420 SF Retail for Lease
GLA	+/- 18,089 SF Multi-Tenant Building
Use	Retail
Parking	91 surface spaces
Zoning	BD-III
Traffic Counts	Hwy 160 32,600 VPD
Lease Rate	Call for Leasing Details



Demographics

RADIUS	1 MILE	3 MILE	5 MILE
2022 Population	7,380	52,553	127,439
Avg. Household Income	\$139,462	\$146,367	\$128,601
Median Household Income	\$106,261	\$114,757	\$99,236
Households	2,584	19,205	48,522
Daytime Employees	3,725	14,617	36,339

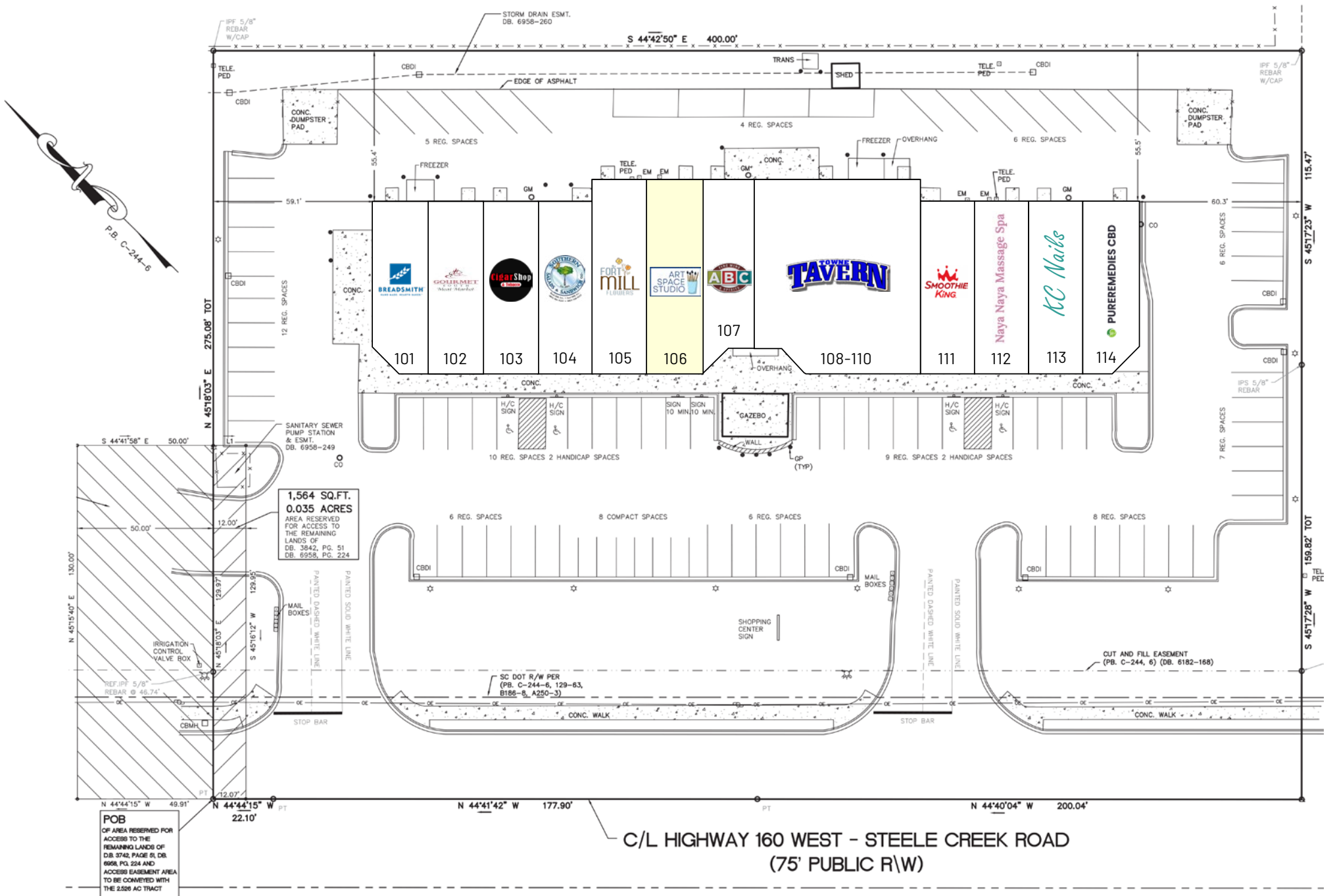


Tenant Roster

101	Breadsmith	1,568 SF
102	Gourmet South	850 SF
103	Cigar Shop & Tobacco	1,240 SF
104	Southern Salads & Sandwich Co.	1,240 SF
105	Fort Mill Flowers	1,420 SF
106	Available	1,420 SF

107	Bottoms Up - ABC Store	1,280 SF
108-110	Towne Tavern	4,090 SF
111	Smoothie King	1,240 SF
112	Naya Naya Massage & Spa	1,240 SF
113	KC Nails	1,450 SF
114	Pure Remedies CBD	980 SF

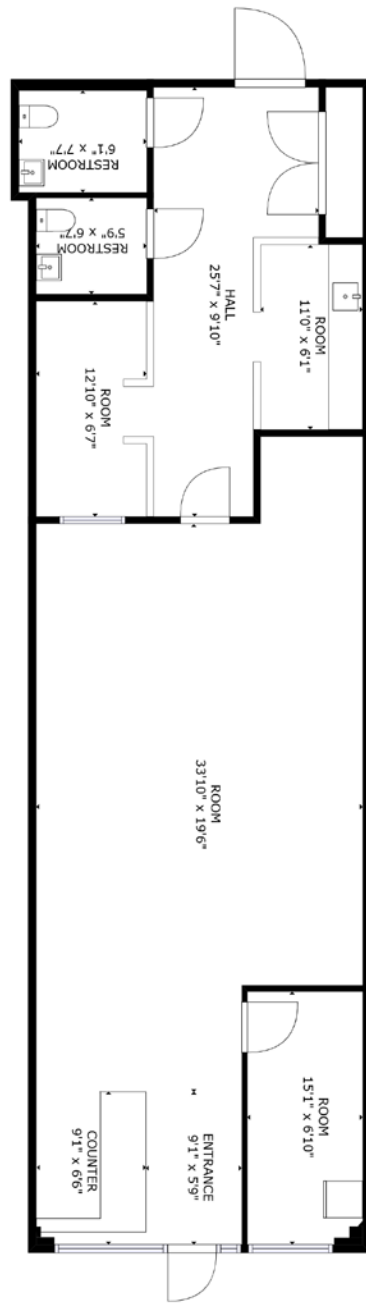
Site Plan



Available

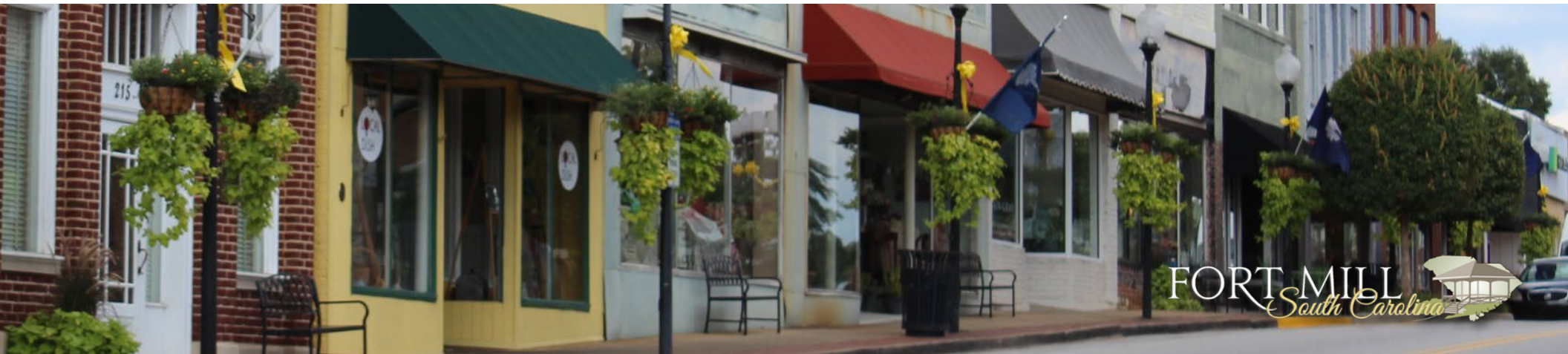
Retail
+/- 1,420 SF

 Virtual Tour



Fort Mill South Carolina

Fort Mill takes its name from a colonial-era fort built by the British and a grist mill on nearby Steele Creek. The area has a rich history, with the Catawba Indians making their home here for many years before Scotch-Irish settlers began arriving in the 1750s and 1760s, creating a small settlement. Fort Mill grew rapidly in the late 1800s as textile mills were established, and the population continued to rapidly increase as its economy became larger and more diversified. Today, Fort Mill is a bustling community and suburb of the City of Charlotte, NC.



Market Overview





Contact for Details

Josh Beaver

(704) 373 -9797

josh@thenicholscompany.com



Website

www.TheNicholsCompany.com

Phone

Office (704) 373-9797

Fax (704) 373-9798

Address

1204 Central Avenue, Suite 201

Charlotte, NC 28204

This information has been obtained from sources believed to be reliable. While we do not doubt its accuracy, we have not verified it and make no guarantee, warranty or representation to independently confirm its accuracy and completeness.