



Park Psychological Services

4928 Park Road | Charlotte, North Carolina 28209



Available for Lease

2 Private Practice Offices

Park Psychological Services

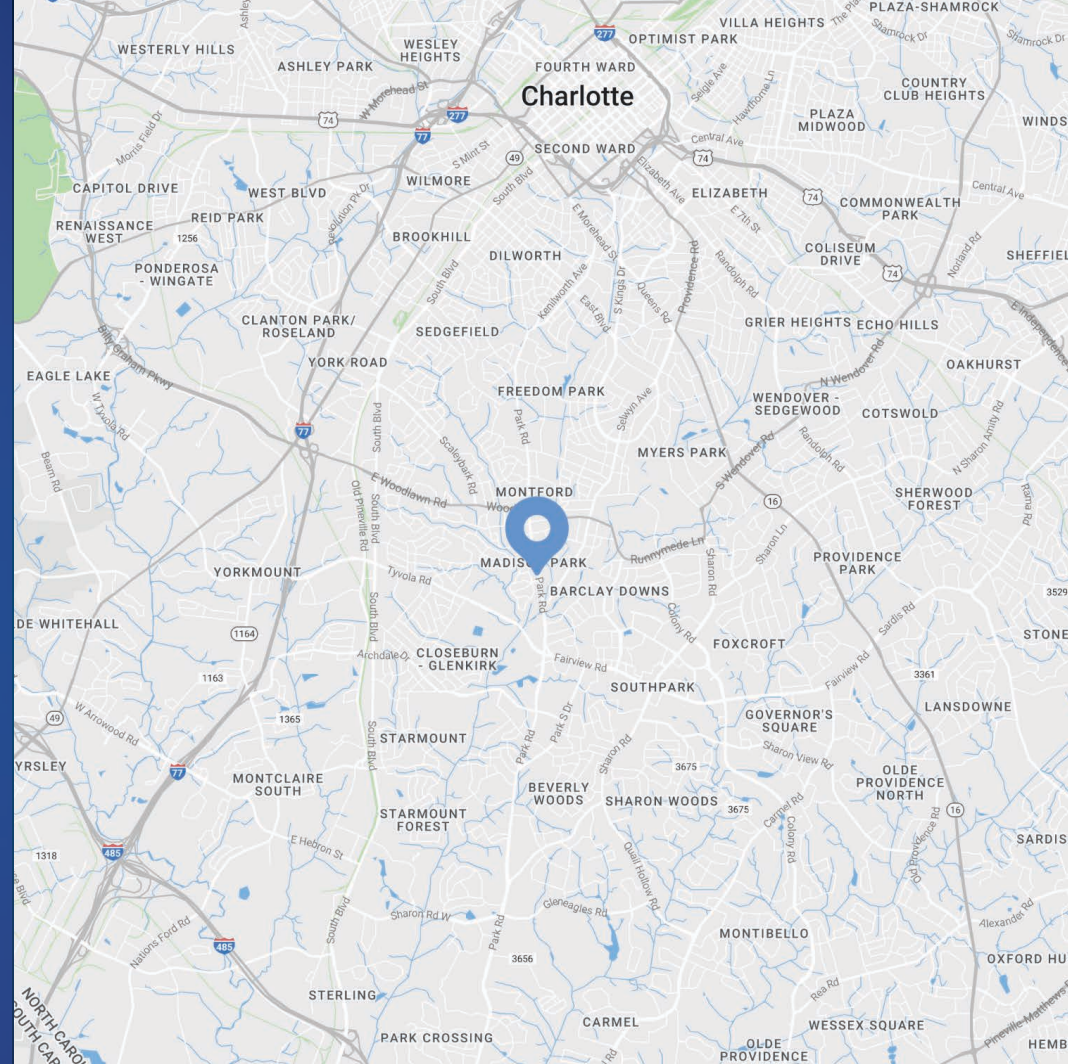
4928 Park Road

Available for Lease

2 private practice offices available for lease in south Charlotte at Park Psychological Services, a great opportunity for mental health professionals or psychologists. The offices include common use of 1 bathroom, reception area, kitchen and parking on site. The building is in a high traffic area on Park Road, minutes from Park Road Shopping Center and South Park. Per the Chamber of Commerce, the zipcode is one of the fastest growing and top ranking in income per household.

Property Details

Address	4928 Park Road Charlotte, NC 28209
Availability	2 Private Practice Offices Available for Lease
Zoning	OFC
Parking	Lease includes convenient onsite parking
Renovated	2013 - Renovated down to the studs
Signage	Bold signage on Park Rd.
Traffic Counts	Park Road 26,500 VPD
Lease Rate	\$950/Month
Lease Term	1 Year



Demographics

RADIUS	1 MILE	3 MILE	5 MILE
2024 Population	11,958	107,710	268,855
Avg. Household Income	\$147,400	\$165,548	\$147,101
Median Household Income	\$104,335	\$107,310	\$97,209
Households	6,601	48,442	127,226
Daytime Employees	16,088	91,882	269,604

Available

+/- 122 SF Office

+/- 160 SF Office

 Virtual Tour



Interior Photos

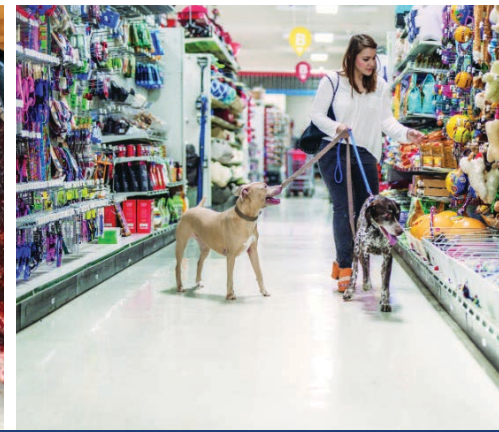


Park Road Corridor

Charlotte, NC

While this area has been referred to as Montford, Madison Park, and Park Road, the city does know one thing for sure: this is the neighborhood to visit if you're looking for good food and drinks (and even better shopping).

Back in the 1950s, Montford was primarily a residential area known for hosting the city's first open-air shopping center. Half a century later, folks still visit Montford for Park Road Shopping Center – but the neighborhood is now also known as one of Charlotte's go-to dining and nightlife destinations.



Northern View of Site



Paul Road Shopping Center

SHAKE SHACK

Anole's

CAVA

J.CREW

Lul'a

CHOPT

suirez bakery

1515

NEW FORD PARK

New Construction
+/- 12,607 SF Office

EMERSON

337 MultiFamily Units

CIELO

205 MultiFamily Units

Viva Chicken

Park Towne

Starbucks

Jason's deli

Total Wine

McALISTER'S

L'Ostrica

McALISTER'S

snap

Site

28-500 VPD

Park Road



South Park

515
PARK PLACE
Multi-Family



273 MultiFamily Units

Park Selwyn Terrace



CIELO



205 MultiFamily Units

Site



Contact for Details

Michelle L. Wellmon

(704) 885-2774

michelle@thenicholscompany.com



Website

www.TheNicholsCompany.com

Phone

Office (704) 373-9797

Fax (704) 373-9798

Address

1204 Central Avenue, Suite 201

Charlotte, NC 28204

This information has been obtained from sources believed to be reliable. While we do not doubt its accuracy, we have not verified it and make no guarantee, warranty or representation to independently confirm its accuracy and completeness.