



1127 Commercial Avenue

Charlotte, North Carolina 28205



Site

Available for Sale

+/- 2,550 SF Industrial Building in East Charlotte

Property Overview

1127 Commercial Avenue Available for Sale

Well maintained industrial structure in east Charlotte for sale. Building is conveniently located between The Plaza and Eastway Drive. Great location for small distribution center, manufacturing, or flex-space. Owner recently updated the roof and HVAC system.

Property Details

Address 1127 Commercial Avenue | Charlotte, NC 28205

Availability +/- 2,550 SF Available for Sale

Acreage +/- 0.295 AC

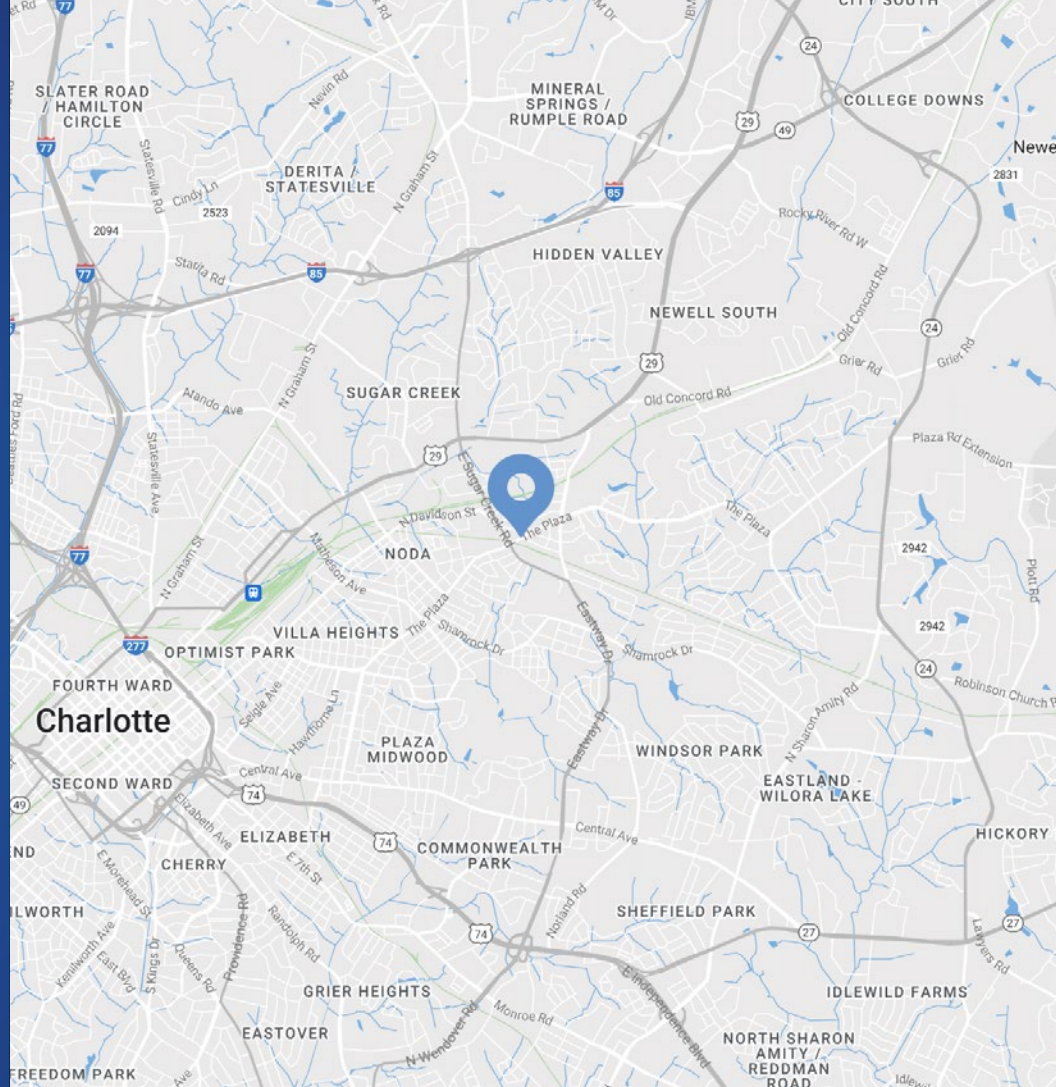
Zoning ML-1 | UDO Zoning
Previously I-1

Parcel 09301304

Use Industrial

Traffic Counts The Plaza | 21,500 VPD
E. Sugar Creek Rd | 31,000 VPD

Sale Price \$699,000

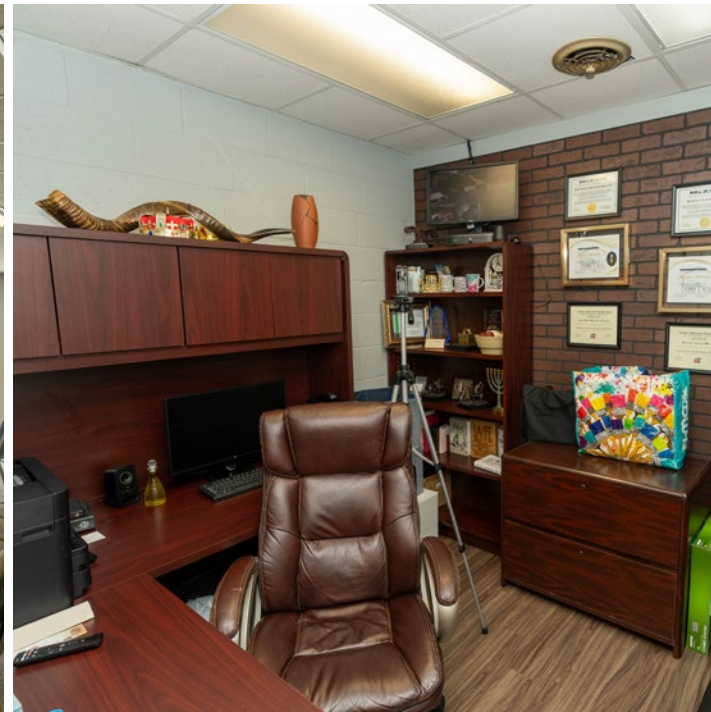


Site

Demographics

RADIUS	1 MILE	3 MILE	5 MILE
2023 Population	10,703	105,578	277,747
Avg. Household Income	\$84,505	\$84,052	\$99,213
Median Household Income	\$54,808	\$53,997	\$61,665
Households	4,641	45,030	120,041
Daytime Employees	3,553	40,526	215,378

Interior Photos



Market Overview





Contact for Details

Michael Sullivan

(704) 373-9797

msullivan@thenicholscompany.com



Website

www.TheNicholsCompany.com

Phone

Office (704) 373-9797

Fax (704) 373-9798

Address

1204 Central Avenue, Suite 201

Charlotte, NC 28204

This information has been obtained from sources believed to be reliable. While we do not doubt its accuracy, we have not verified it and make no guarantee, warranty or representation to independently confirm its accuracy and completeness.