



# The Coca-Cola Building

128-162 N. Broad St. | Mooresville, NC 28115



**Available for Lease**  
+/- 1,078 - 12,474 SF Available

## Overview

# The Coca-Cola Building Available for Lease

The Coca-Cola Building totals +/- 28,390 square feet and consists of multiple separate, unique spaces. Located in Historic Downtown Mooresville, this site is walking distance to popular retail and restaurant destinations. The spaces boast a mix of unique features, including open floor plans, mezzanine features, wood beam ceilings and exposed brick. Supporting a range of uses, the available spaces are ideal for retail and office.

## Property Details

**Address** 128-162 N. Broad Street | Mooresville, NC 28115

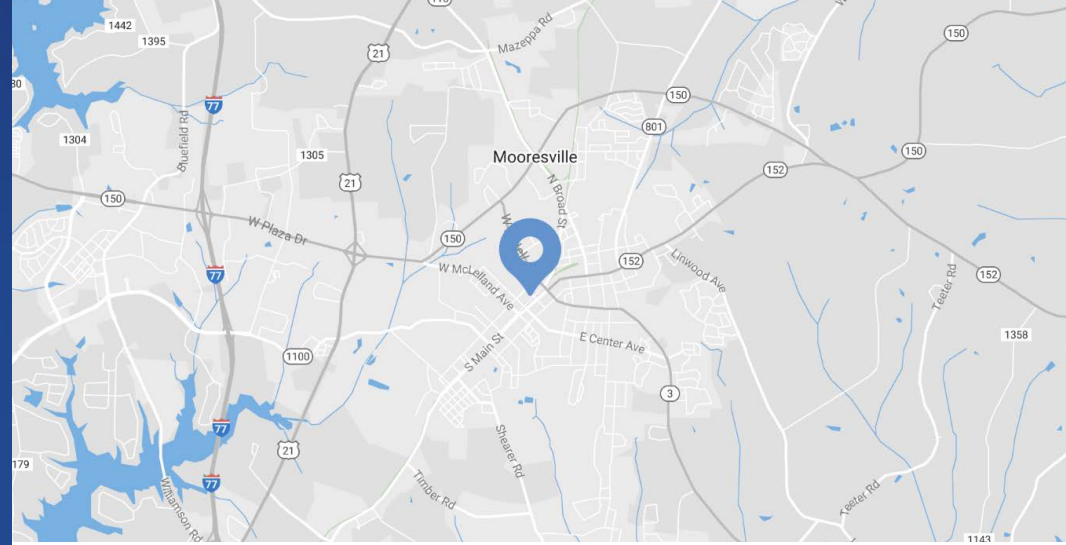
**Availability** +/- 1,078 - 12,474 SF Available for Lease

**Use** Ideal for retail and office

**Parking** 80 parking spaces

**Zoning** TC

**Traffic Counts** N. Broad Street | 7,200 VPD



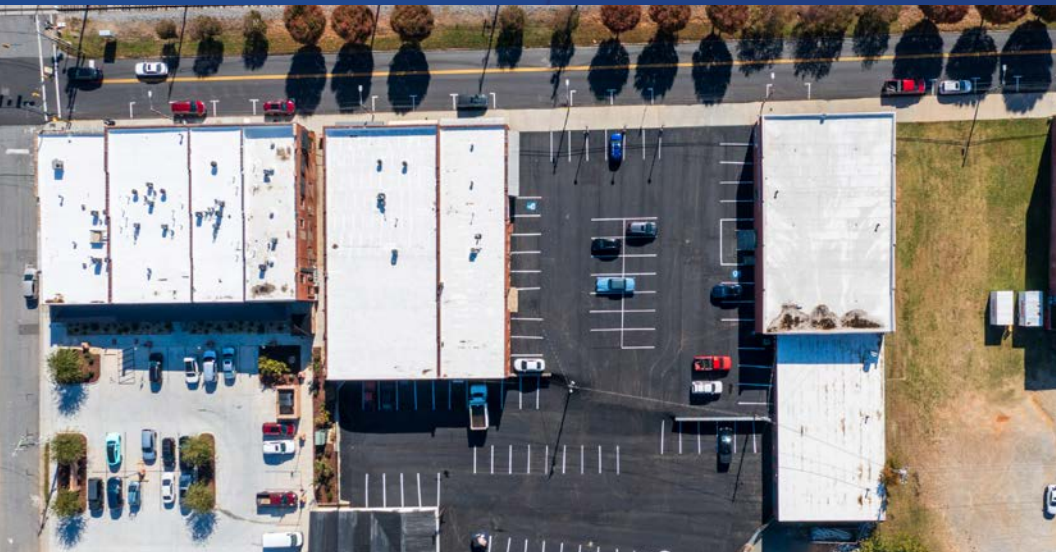
## Mooresville is a thriving small town with big town progress

Be a part of it.

- Historic Character
- Diverse Tenant Mix
- Local Ownership & Management
- Located in Mooresville's Social District

## Demographics

RADIUS	1 MILE	3 MILE	5 MILE
<b>2024 Population</b>	8,220	42,389	76,093
<b>Avg. Household Income</b>	\$85,018	\$97,865	\$114,396
<b>Median Household Income</b>	\$62,382	\$78,612	\$114,396
<b>Households</b>	3,516	16,583	29,875
<b>Daytime Employees</b>	4,480	17,960	37,185





128 N. Broad Street		
128-A	Available	7,700 SF

134 N. Broad Street		
134-A/B	Available	4,774 SF

156 N. Broad Street		
156-A	Available	1,078 SF
156-B	Bace Barbershop	1,959
156-C/D	Available	4,212 SF
156-F	Available	2,966 SF

162 N. Broad Street		
162-A	Salon Zele	1,063 SF
162-B	North Carolina Provisions	1,373 SF

# 128 N. Broad Street

Mooresville, NC 28208

Historic building used during the filming of *Banshee*. There is a Coca-Cola mural on the side of the building, distinguishing it as an iconic location downtown. The space includes an upstairs mezzanine, roll-up door, and flexible floorplan.

## Available

+/- 7,700 SF

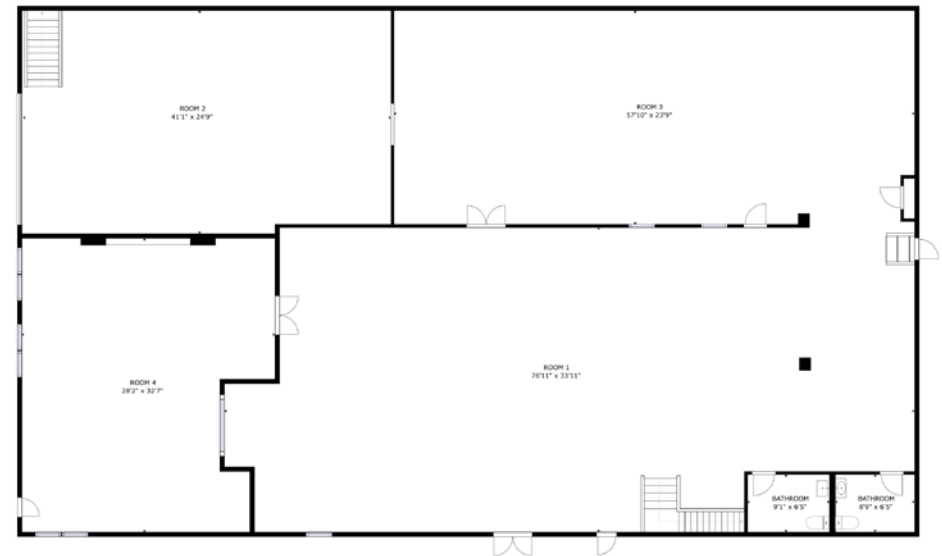
## Lease Rate

\$20/SF NNN

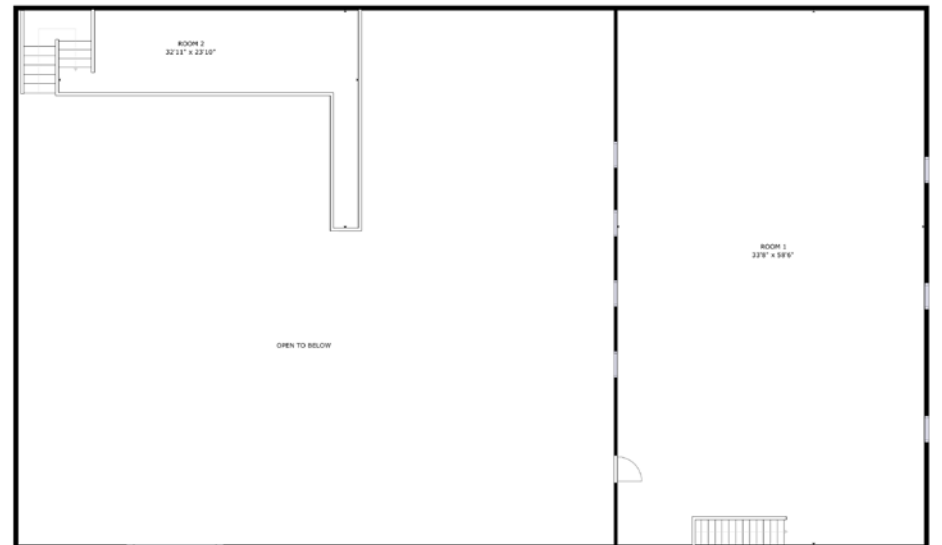
 [Virtual Tour](#)

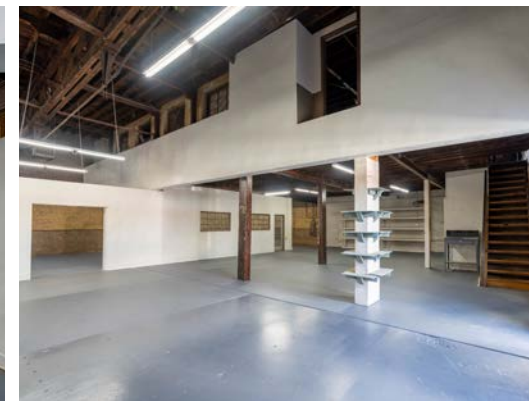
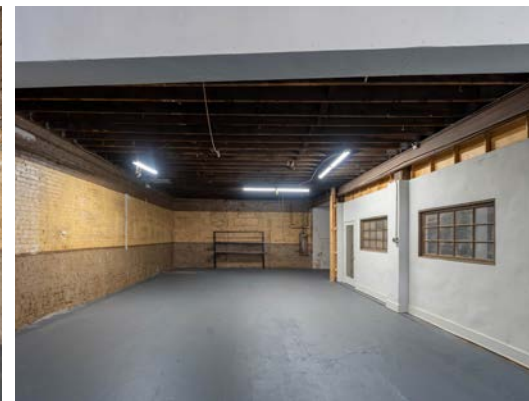
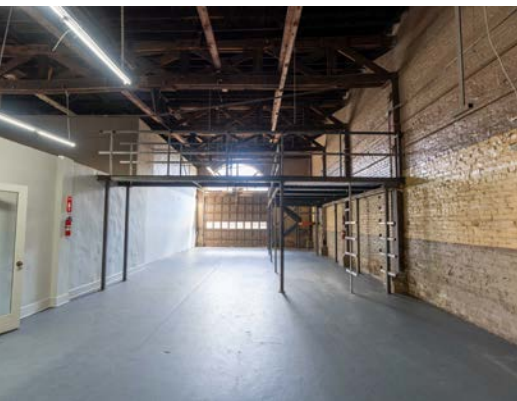


## Ground Floor



## Mezzanine Level





# 134 N. Broad Street

Mooresville, NC 28208

Ground floor space featuring an open floor layout, several office spaces, a restroom, and a roll-up door.

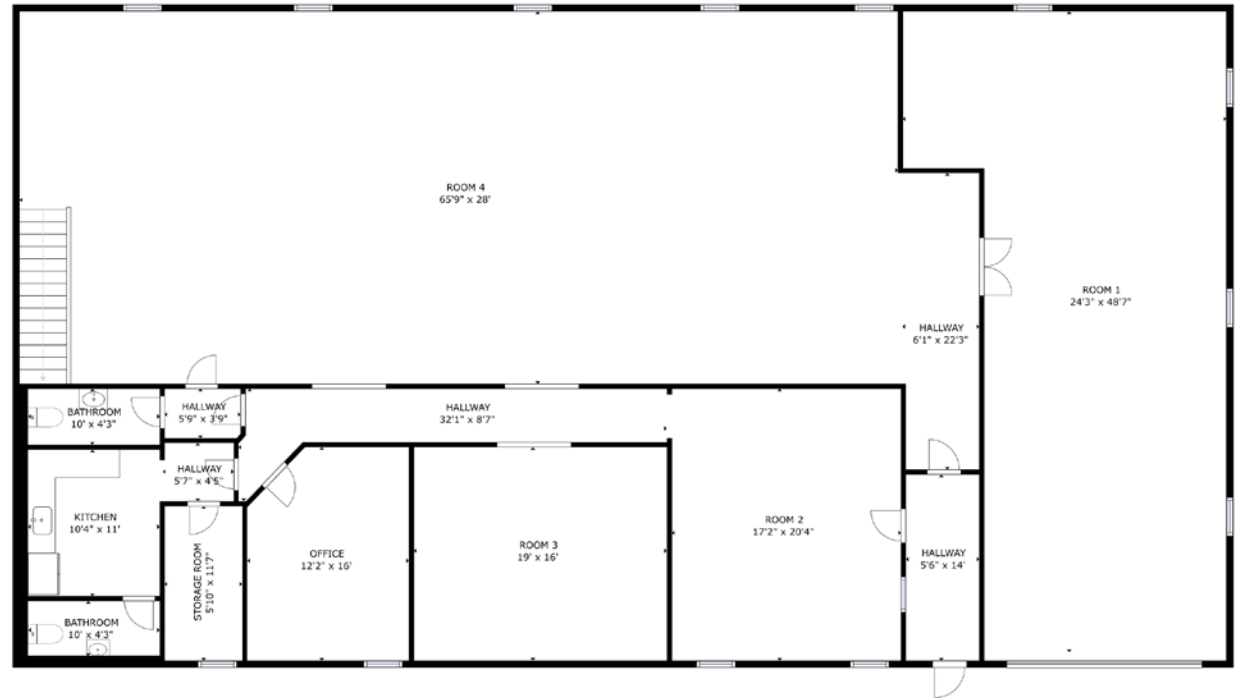
**Available**

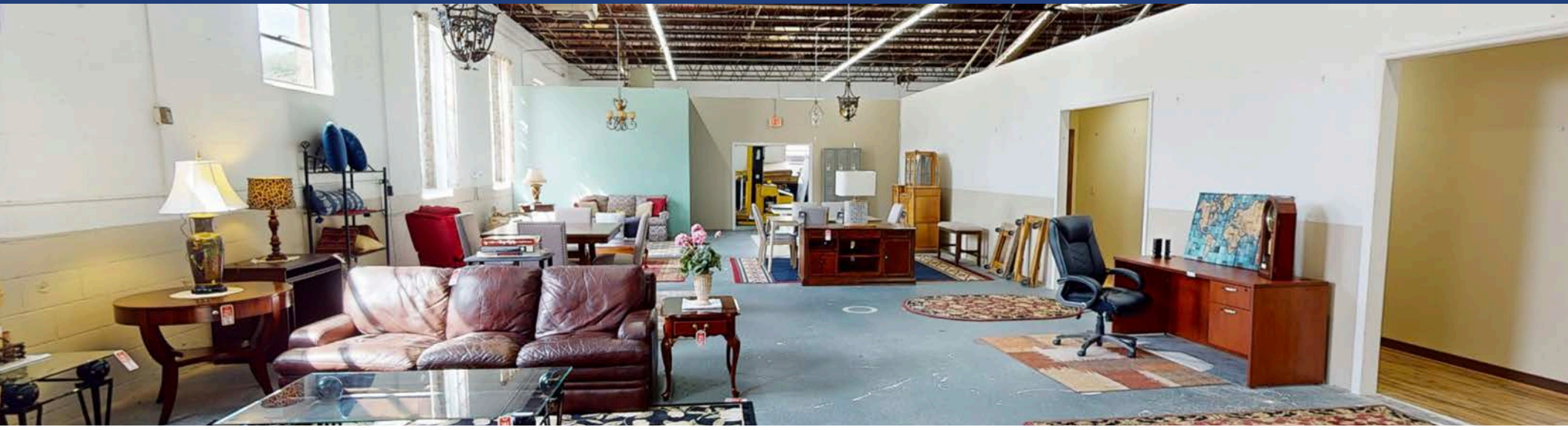
+/- 4,774 SF

**Lease Rate**

\$16/SF NNN

 Virtual Tour





# 156-A N. Broad Street

Mooresville, NC 28208

Prime retail space with one office, open floorplan, ample windows, and single restroom.

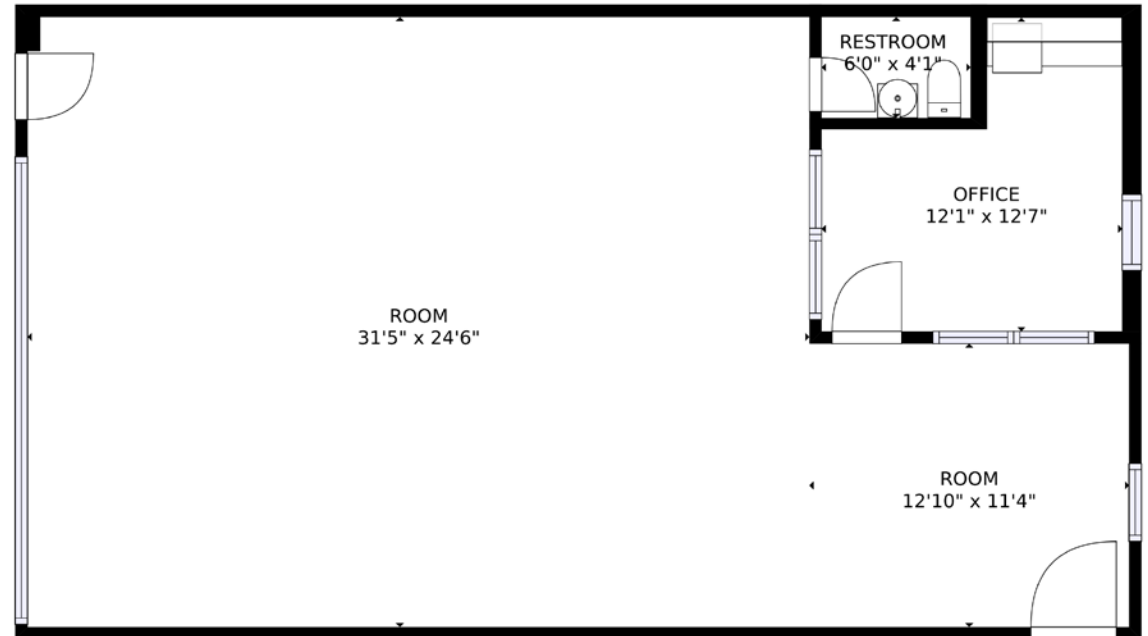
## Available

+/- 1,078 SF

## Lease Rate

\$24/SF NNN

 Virtual Tour





# 156-C/D N. Broad Street

Mooresville, NC 28208

Prime retail space with mix of offices, open floorplan, garage door, ample windows, and single restroom.

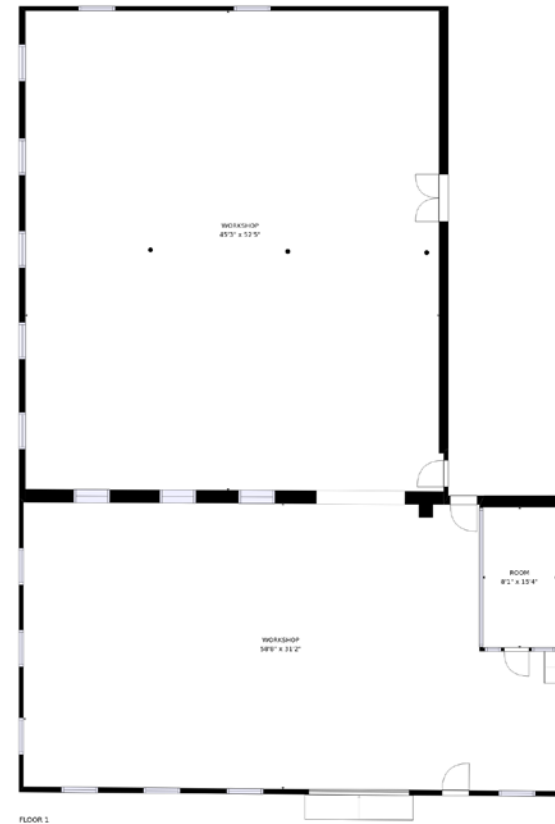
## Available

+/- 4,212 SF

## Lease Rate

\$16 - \$24/SF NNN

 [Virtual Tour](#)





# 156-F N. Broad Street

Mooresville, NC 28208

Ground floor space with open floorplan, office, garage doors, and single restroom.

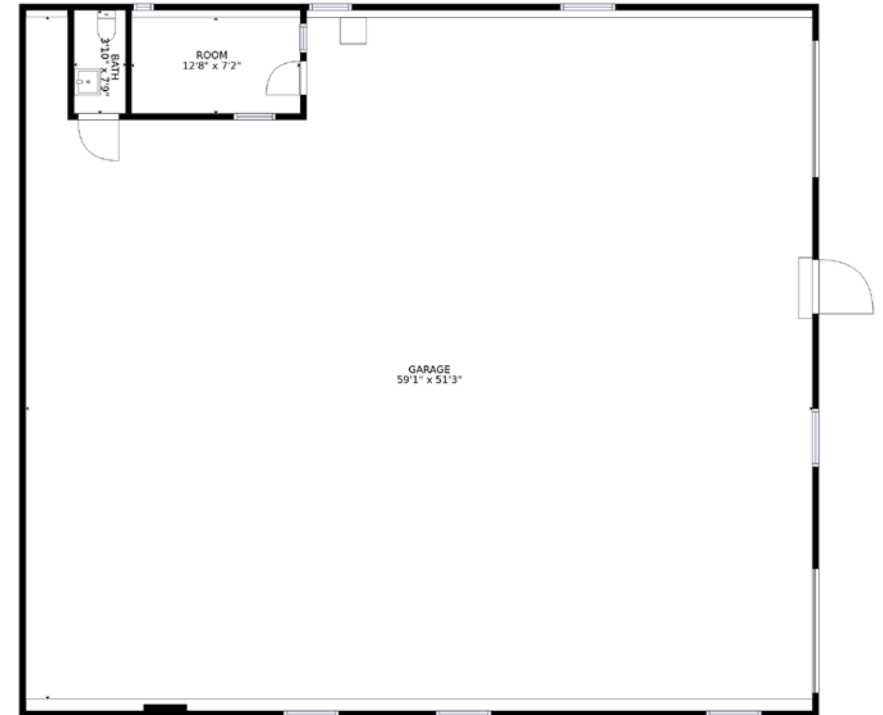
## Available

+/- 2,966 SF

## Lease Rate

\$16/SF NNN

 [Virtual Tour](#)





Site

Mooresville Social District

Downtown Mooresville

Liberty Park

Mooresville High School

THE BARCELONA  
RESTAURANT & BAR

TRUCKS

BEER LAB

THE MAIN STREET

EPC CREST HOUSE

FAMOUS TOASTERY  
on tap

158 MAIN

N. Church Street

TRUIST

CVS pharmacy

Bank of America

FIFTH THIRD BANK

8,600 VPD

DOLLAR GENERAL

E. Irregell Avenue

E. Center Ave

E. Statesville Ave

N. Academy Street

N. Broad St

N. Main Street

# Mooreville North Carolina

Mooreville is approximately a 35-minute drive north from Charlotte. With a growing population of nearly 40,000 people, Mooreville has become one of the top places to live outside of the Queen City. The town is near I-77, making it an easy commute for residents who work in Charlotte. Lake Norman is Mooreville's main attraction. With 520 miles of shoreline, the lake offers beautiful beaches, fishing, boating, hiking, camping, trails, and more.





Contact for Details

**Lauren Bremer**

(980) 226-6911

lauren@thenicholscompany.com

**Taylor Barnes**

(704) 274-1224

taylor@thenicholscompany.com



**Website**

[www.TheNicholsCompany.com](http://www.TheNicholsCompany.com)

**Phone**

Office (704) 373-9797

Fax (704) 373-9798

**Address**

1204 Central Avenue, Suite 201

Charlotte, NC 28204

This information has been obtained from sources believed to be reliable. While we do not doubt its accuracy, we have not verified it and make no guarantee, warranty or representation to independently confirm its accuracy and completeness.