



# 777 Dreamers Way

West Union, South Carolina 29691



## Available for Sale

+/- 5,404 SF on 40 AC along the shoreline of Lake Keowee

## Property Overview

# 777 Dreamers Way

## Available for Sale

+/- 5,404 SF on 40 AC with 2,000 FT of shoreline available for sale on Lake Keowee, SC. With 300 total miles of shoreline framed by the Blue Ridge Mountains, Lake Keowee is a beautiful 18,500 AC lake located only 20 minutes from Clemson and 45 minutes from Greenville. Currently zoned residential, this is an excellent opportunity in a beautiful location.

## Property Details

**Address** 3051 Safety Harbor Dr | West Union, SC 29691

**Availability** +/- 5,404 SF on 40 AC Available for Sale  
2856 SF Main Floor | 2548 SF Second Floor  
Additional 57 AC Available

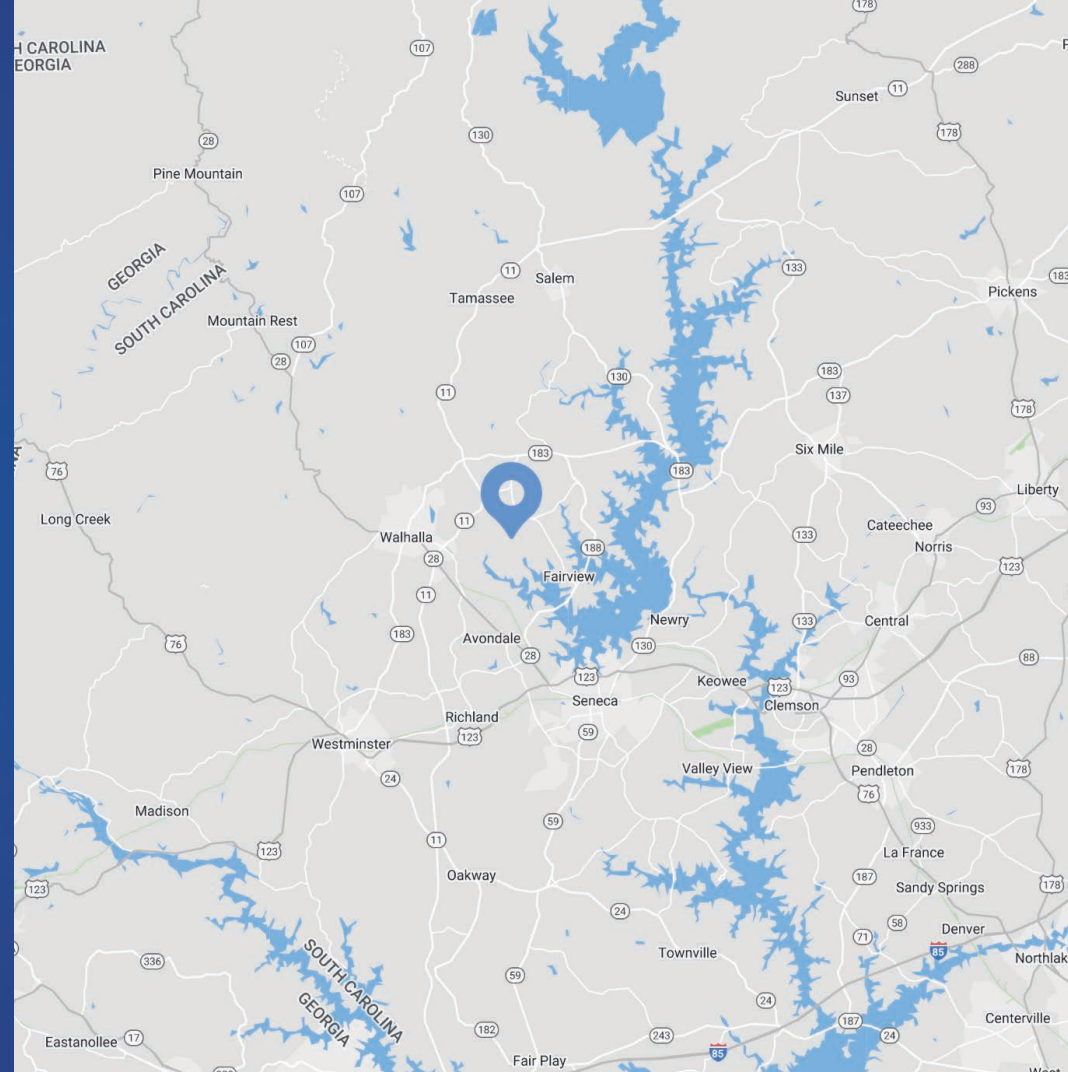
**Parcel IDs** 162-00-03-063

**Zoning** Residential

**Year Built** 2020

**Sale Price** \$1,850,000

**Additional Details** Basement can be converted into living space



Drone Video

## Demographics

RADIUS	1 MILE	3 MILE	5 MILE
<b>2022 Population</b>	7,566	39,318	71,554
<b>Avg. Household Income</b>	\$90,504	\$96,982	\$111,226
<b>Median Household Income</b>	\$66,788	\$75,329	\$82,957
<b>Households</b>	3,195	15,265	27,769
<b>Daytime Employees</b>	3,841	16,570	35,889

Clemson

Seneca

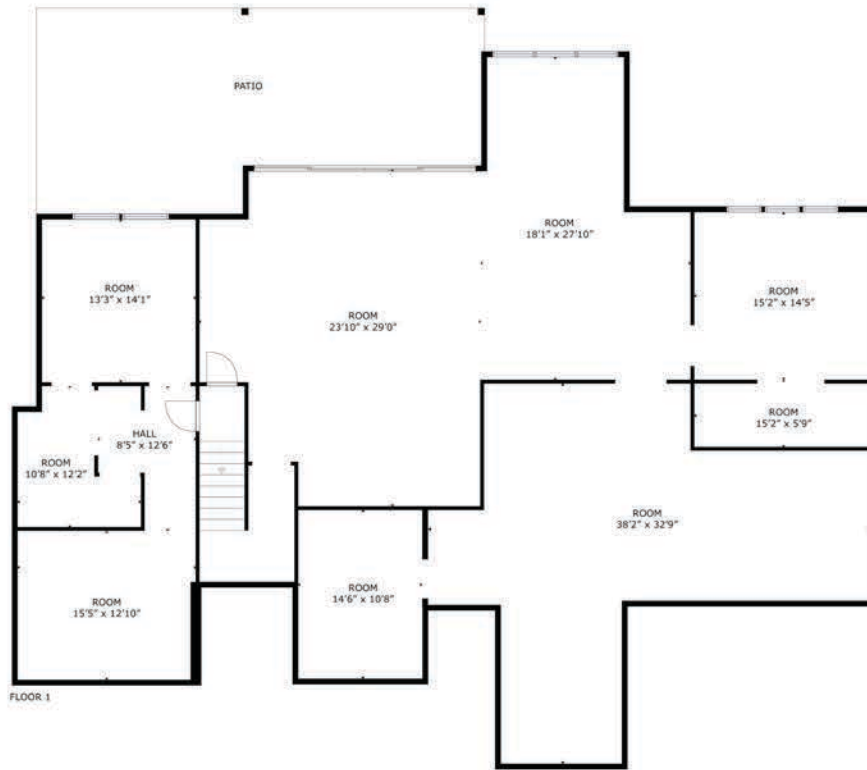
Lake Keowee

Site

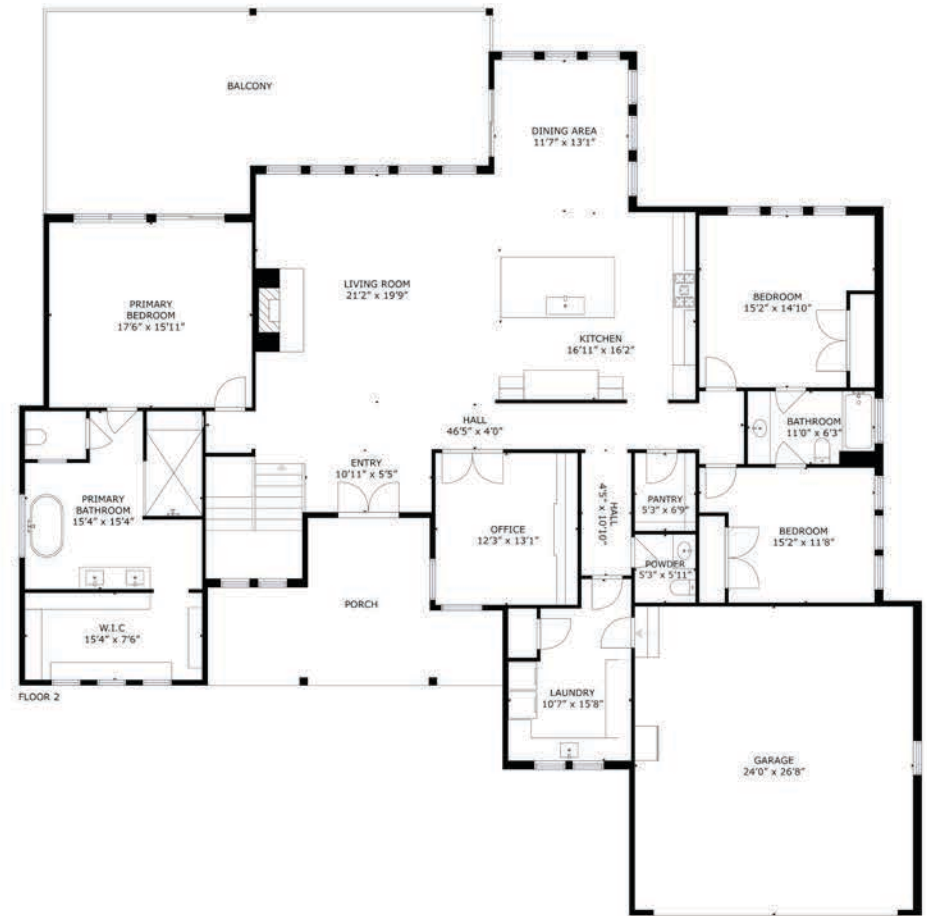


## Available

- +/- 2856 SF Floor 1
- +/- 2548 SF Floor 2
- +/- 633 SF Garage



Floor 1



Floor 2 (Unfinished)

# Interior Photos





Site

Contact for Details

**Rusty Gibbs**

(704) 373-9797

rusty@thenicholscompany.com

**John Nichols**

(704) 373-9797

jnichols@thenicholscompany.com



**Website**

www.TheNicholsCompany.com

**Phone**

Office (704) 373-9797

Fax (704) 373-9798

**Address**

1204 Central Avenue, Suite 201

Charlotte, NC 28204

This information has been obtained from sources believed to be reliable. While we do not doubt its accuracy, we have not verified it and make no guarantee, warranty or representation to independently confirm its accuracy and completeness.