



135 & 141 W. Main St.

Albemarle, NC 28001



Available for Lease

+/- 10,340 SF 2nd Gen Restaurant in Downtown Albemarle

Property Overview

135 & 141 W. Main St. Available for Lease

This 2nd Generation Restaurant is located in the heart of downtown Albemarle, NC. Situated with 3 floors with a kitchen on the main level. The main floor would be a great opportunity for a restaurant, the second floor event space with possible speakeasy. The basement is perfect for storage.

Property Details

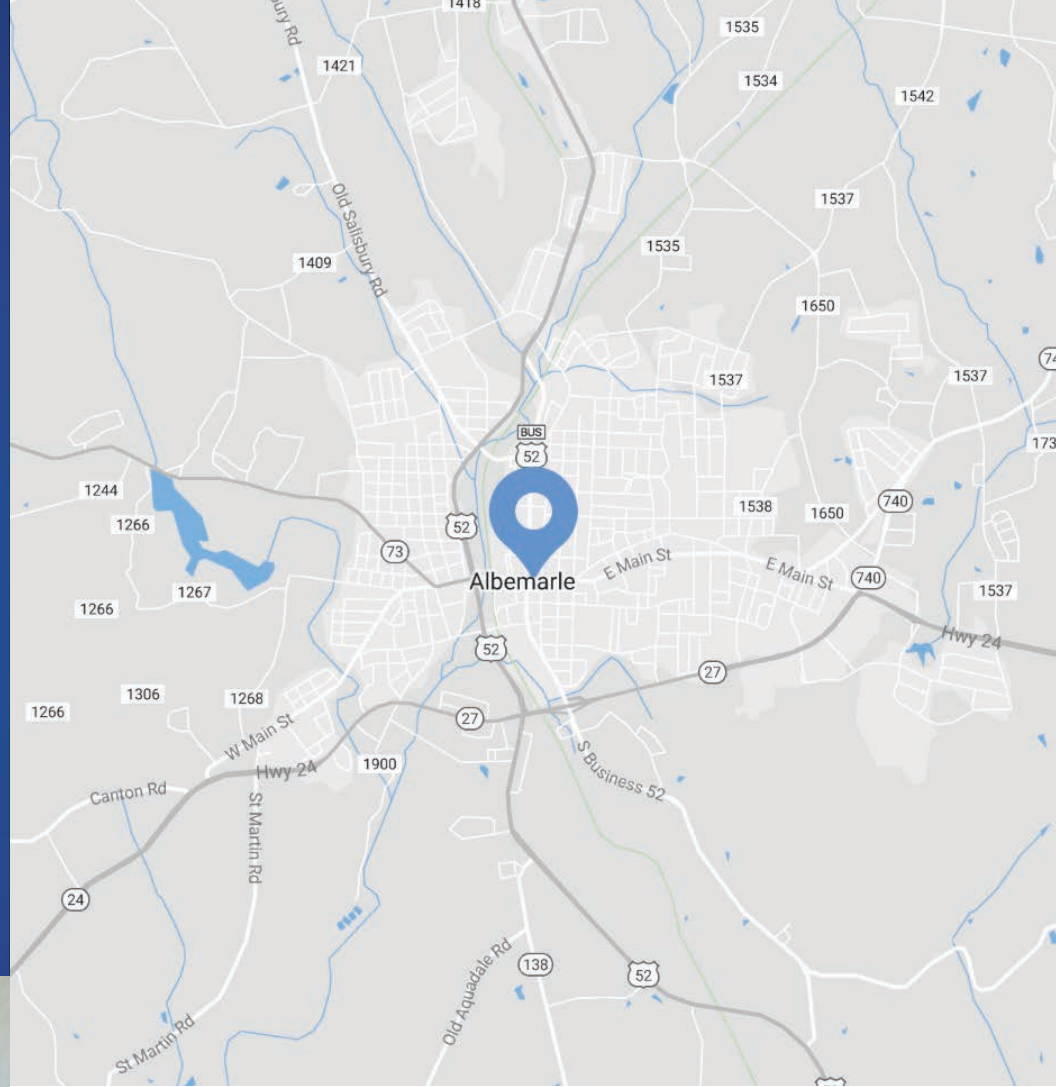
Address 135 & 141 W. Main St. | Albemarle, NC 28001

Square Footage +/- 10,340 SF Available for Lease

Use 2nd Generation Restaurant

Traffic Counts W Main St | 6,900 VPD

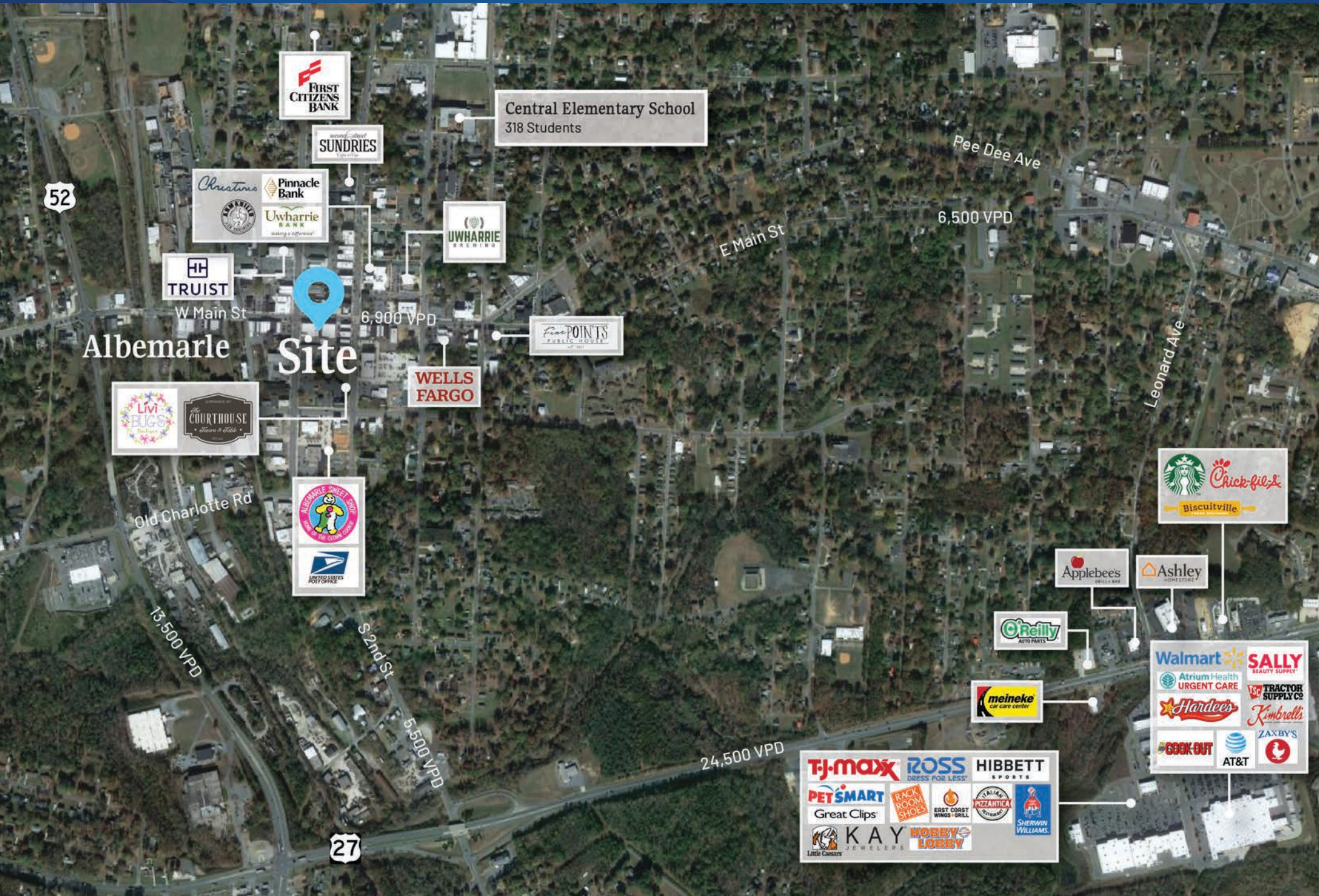
Lease Rate \$15 PSF NNN



Demographics

RADIUS	1 MILE	3 MILE	5 MILE
2023 Population	5,795	17,493	24,617
Avg. Household Income	\$66,887	\$70,627	\$73,796
Median Household Income	\$40,425	\$47,411	\$51,829
Households	2,507	7,281	10,132
Daytime Employees	4,203	11,918	13,534

Market Overview



Property Photos



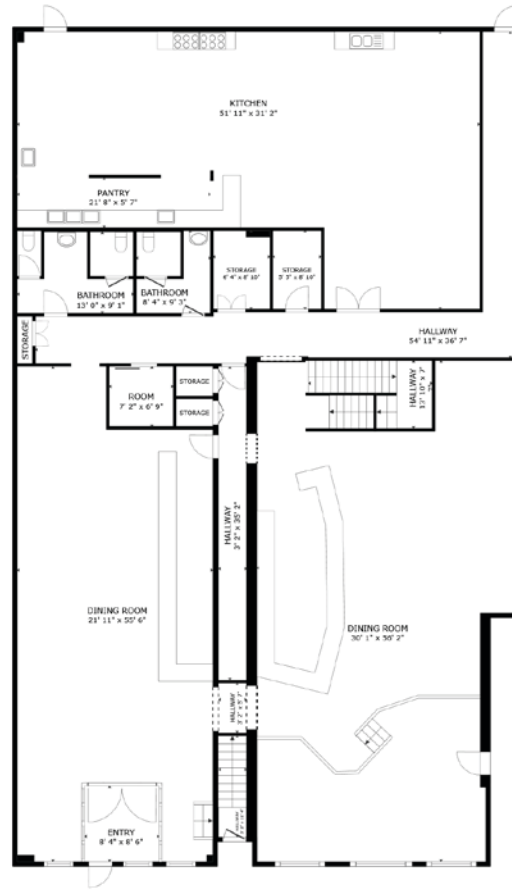
Available

First Floor: +/- 5,150 SF

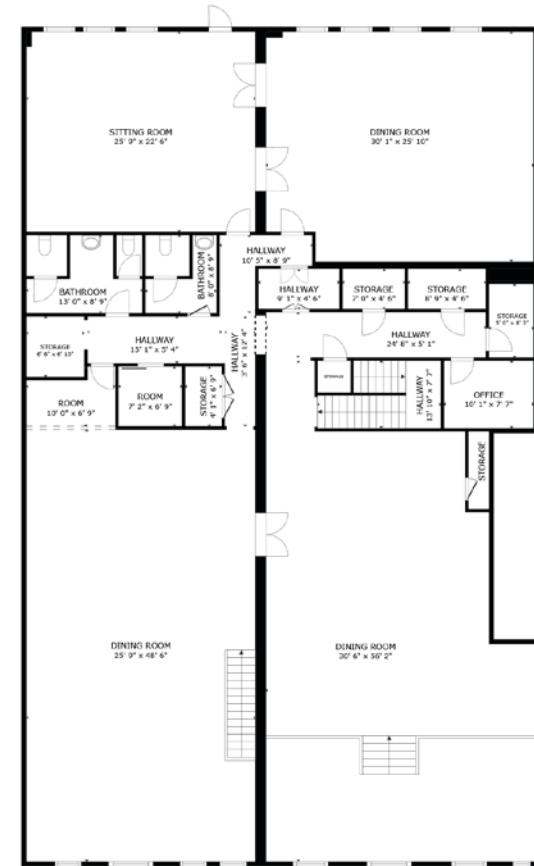
Second Floor: +/- 5,189 SF

Total: +/- 10,340 SF

 Virtual Tour



FLOOR 1



FLOOR 2



Albemarle North Carolina

Nestled in North Carolina's Stanly County, Albemarle is a charming town known for its suburban tranquility and strong sense of community. With parks scattered throughout, residents enjoy a peaceful atmosphere and ample green spaces. The town's appeal is further enhanced by its close-knit neighborhoods and a high rate of homeownership. Albemarle's public schools are well-regarded, adding to its allure for families. Positioned as the largest municipality in Stanly County and serving as its county seat, Albemarle offers a delightful blend of small-town charm and modern conveniences. Its proximity to the vibrant urban centers of Charlotte and the Piedmont Triad area provides easy access to a wide array of outdoor activities, making it an ideal place to call home or have a business.





Site

Contact for Details

John Hadley

(704) 373 - 9797

jhadley@thenicholscompany.com



Website

www.TheNicholsCompany.com

Phone

Office (704) 373-9797

Fax (704) 373-9798

Address

1204 Central Avenue, Suite 201
Charlotte, NC 28204

This information has been obtained from sources believed to be reliable. While we do not doubt its accuracy, we have not verified it and make no guarantee, warranty or representation to independently confirm its accuracy and completeness.