



# South End Eats

500 W Summit Ave | Charlotte, NC, 28203

Available Ghost Kitchens

+/- 200-300 SF Suites

## Property Overview

# South End Eats Available Ghost Kitchens

The Nichols Company presents South End Eats, a unique private ghost kitchen opportunity in South End. Located in the center of delivery demand, these ghost kitchens by CloudKitchens provide a turnkey solution for restaurant owners to quickly and affordably expand their businesses. With easy accessibility located between both I-77 and I-277 to the surrounding Charlotte submarkets, this is ideal for startup concepts, personal chefs, catering companies, food trucks, single-location operators, and national chains looking to expand.

## Property Details

**Address** 500 W Summit Ave | Charlotte, NC, 28203

**Availability** +/- 200 - 300 SF Suites Available

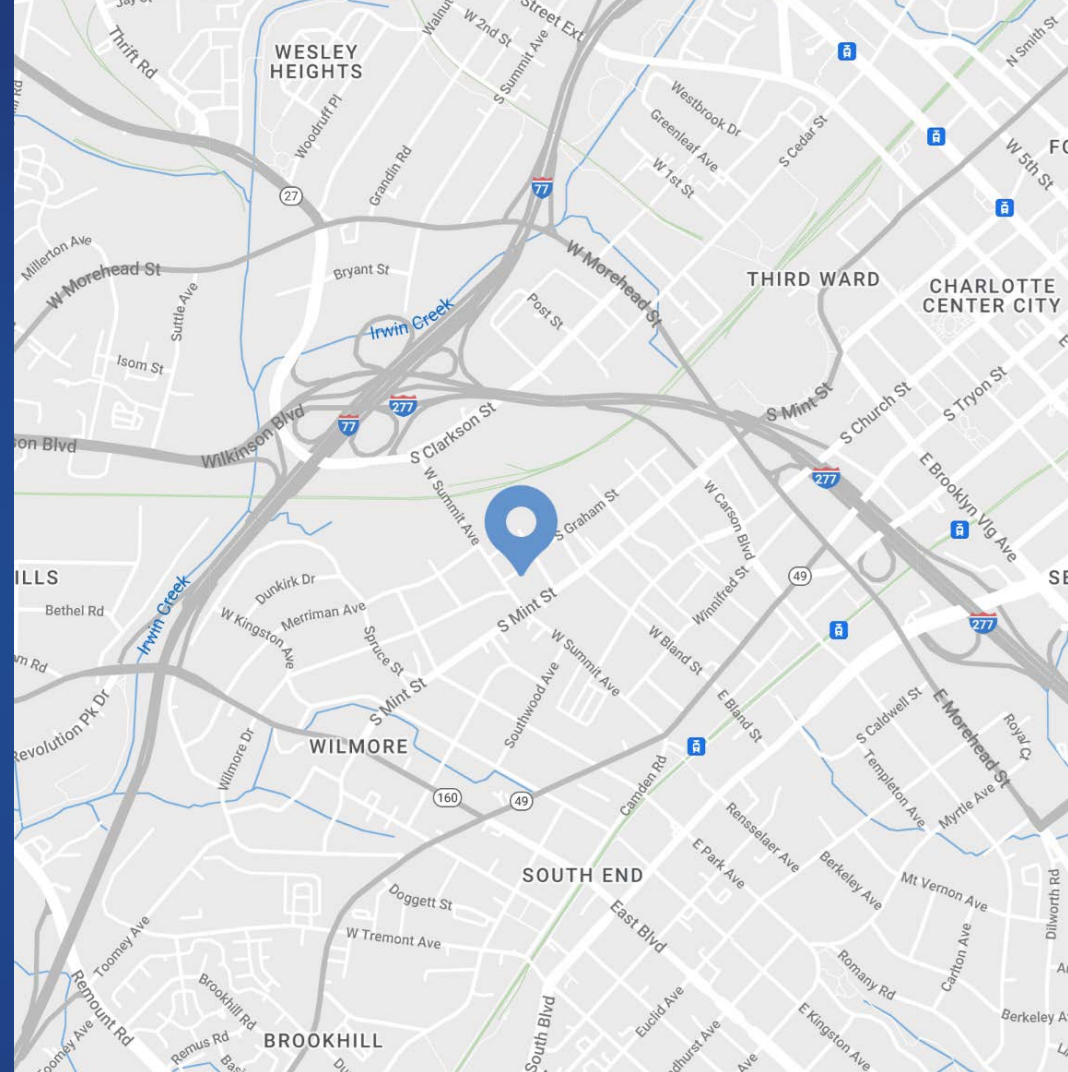
**Use** Retail

**Parcel ID** 07326211

**Zoning** TOD-UC

**Pricing** Call for Details

**Additional Information** Kitchen spaces include walk-in coolers with refrigerator, freezer, and dry storage as needed. Outdoor patio seating. Self processing.



## Demographics

RADIUS	1 MILE	3 MILE	5 MILE
<b>2024 Population</b>	22,158	120,537	247,918
<b>Avg. Household Income</b>	\$147,553	\$133,935	\$125,865
<b>Median Household Income</b>	\$107,564	\$86,446	\$79,103
<b>Households</b>	14,009	62,484	118,017
<b>Daytime Employees</b>	42,978	164,615	276,321



# SOUTH END EATS

South End Eats offers commercial ghost kitchens designed for speed, quality, and scale, making it easy to launch a delivery restaurant with lower risk and capital. Optimized for delivery food production, these kitchens require minimal staff and resources. Businesses can open a ghost kitchen in weeks, leveraging South End Eats proven model for efficient food processing and delivery. Located in densely populated areas, these spaces ensure accurate, timely orders and integrate all delivery apps on a single tablet. The model allows for multiple brands and cuisines, reducing overhead costs and increasing profits.



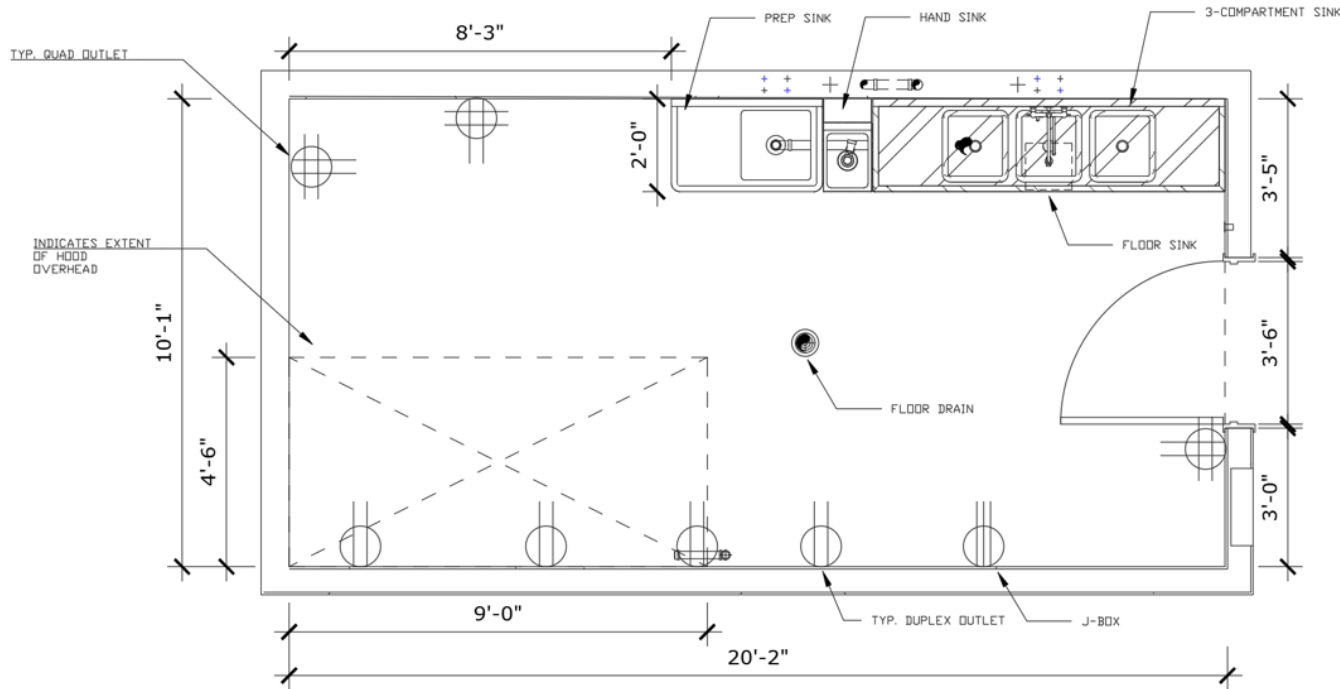
# CloudKitchens®

CloudKitchen's commercial kitchens provide an efficient, and low-risk solution for launching delivery restaurants. Optimized for food production, these kitchens minimize staff needs and resources. Businesses can open a ghost kitchen in weeks using CloudKitchen's proven model. Located in high-demand areas, they ensure accurate, timely orders and integrate all delivery apps on a single tablet. This model allows for multiple brands and cuisines, reducing overhead and increasing profits. Ideal for both large and small businesses, CloudKitchen's shared spaces eliminate the need for dining rooms and front-of-house staff, offering commercial-grade equipment for busy restaurants to focus on food quality and safety.



# Available Units

Address	Space	Square Footage	\$ per month	\$/SF/YR
500 W Summit Ave	K15	208	\$3,171.25	\$182.96
501 W Summit Ave	K14	194	\$2,870.25	\$177.54
502 W Summit Ave	K22	188	\$3,063.75	\$195.56
503 W Summit Ave	K16	189	\$3,063.75	\$194.52
504 W Summit Ave	K13	192	\$2,870.25	\$179.39
505 W Summit Ave	K12	193	\$2,870.25	\$178.46
506 W Summit Ave	K11	193	\$2,870.25	\$178.46
507 W Summit Ave	K7	187	\$2,870.25	\$184.19
508 W Summit Ave	K6	242	\$3,547.50	\$175.91
509 W Summit Ave	K4	238	\$3,547.50	\$178.87
510 W Summit Ave	K3	246	\$3,547.50	\$173.05
511 W Summit Ave	K2	241	\$3,547.50	\$176.64



## Virtual Tours

- [▶ Suite 7](#)
- [▶ Suite 10](#)
- [▶ Suite 17](#)

# South End

Charlotte, NC

Historic South End, often referred to as South End, is immediately south of Uptown Charlotte. It's where retro mixes with contemporary, historical bumps up against trendy, and art intersects commerce. Result: a pulsing, vibrant neighborhood in the city with meteoric growth. It doesn't hurt being close to Uptown, the airport, major highways, and smack dab on the LYNX Light Rail line. Boasting some of the city's most popular restaurants, bars, breweries and attractions, South End is the fastest growing neighborhood in Charlotte. South End recently landed new headquarter locations for nationally recognized brands such as Lowe's, Lending Tree and Dimensional Fund Advisors. With Charlotte consistently ranking at the top of lists such as "Millennial Moving Destinations", "Destinations for One-Way Moving" and "Fastest Growing Economies" the trend of strong population growth and rent growth are projected to continue.



South End Development Report



# SOUTH END

## \$3.4B

Commercial Development

## 371K SF

Retail Planned/Under Construction

## 2.2MM SF

Office Planned/Under Construction

## 3,802

Residential Units Planned/Under Construction

## 380

Hotel Rooms Planned/Under Construction

# Market Overview





Contact for Details

**Hannah Maeda**

(704) 979 - 4207

[hannah@thenicholscompany.com](mailto:hannah@thenicholscompany.com)



**Website**

[www.TheNicholsCompany.com](http://www.TheNicholsCompany.com)

**Phone**

Office (704) 373-9797

Fax (704) 373-9798

**Address**

1204 Central Avenue, Suite 201

Charlotte, NC 28204

This information has been obtained from sources believed to be reliable. While we do not doubt its accuracy, we have not verified it and make no guarantee, warranty or representation to independently confirm its accuracy and completeness.