



2138 McClintock Rd

Charlotte, North Carolina, 28205



Available for Lease

+/- 2,045 SF Neighborhood Commercial/Education/Residential in Plaza Midwood

Property Overview

2138 McClintock Rd Available for Lease

± 2,045 SF available for lease in the heart of Plaza Midwood. The site is within walking distance of many of Plaza Midwood's iconic retail destinations and popular restaurants. Surrounded by multi-family and mixed-use developments, this site presents an excellent opportunity to enter one of Charlotte's most dynamic neighborhoods. This move-in ready space is ideal for a neighborhood commercial establishment, community center, education, or single family dwelling.

Property Details

Address 2138 McClintock Rd | Charlotte, NC 28205

Availability +/- 2,045 SF Available for Lease

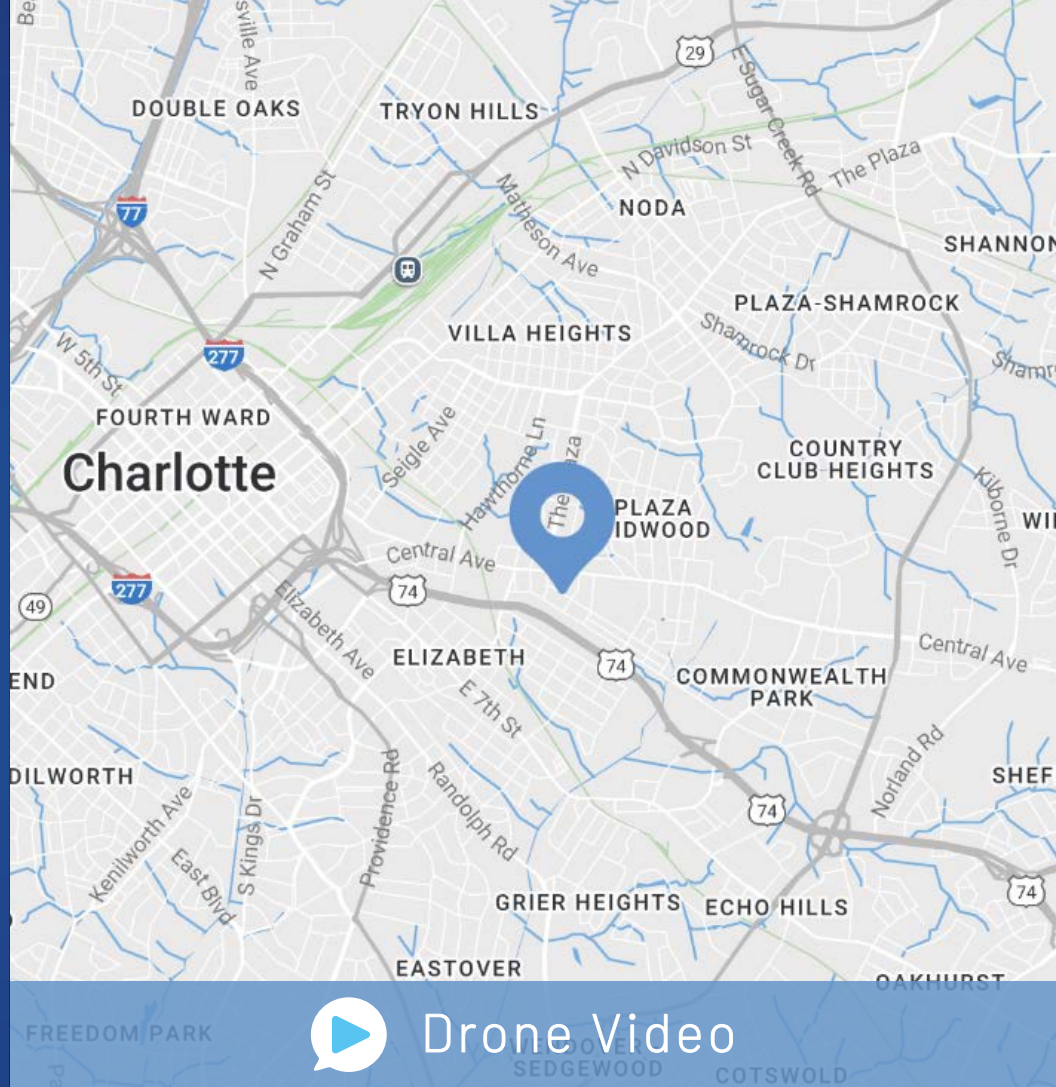
Use Neighborhood Commercial/Education/Residential

Zoning N1-C

Parcels 12901213

Traffic Counts Central Ave | 21,500 VPD
Commonwealth | 6,439 VPD

Lease Rate Call for Leasing Details



Demographics

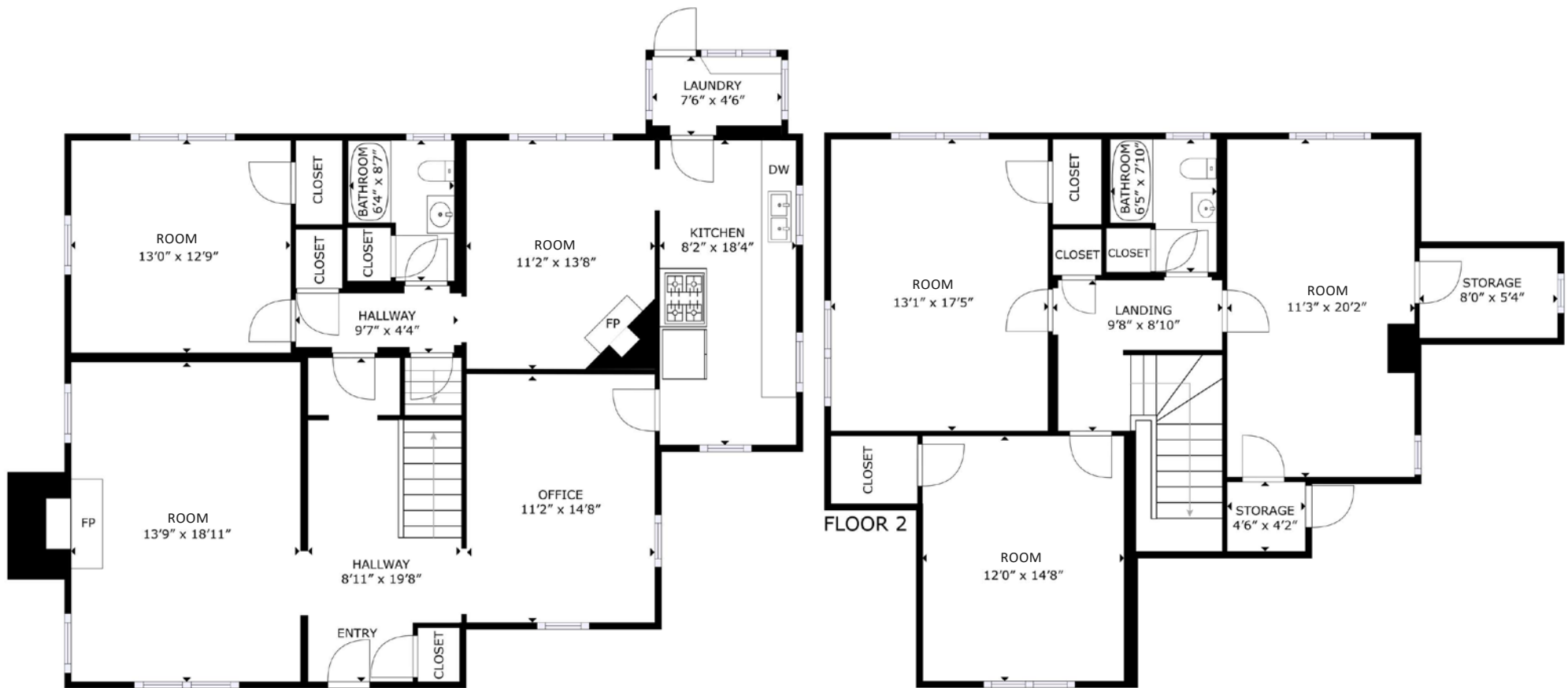
RADIUS	1 MILE	3 MILE	5 MILE
2024 Population	16,597	132,801	302,553
Avg. Household Income	\$141,161	\$138,781	\$122,532
Median Household Income	\$95,267	\$89,143	\$76,088
Households	8,860	66,509	138,011
Daytime Employees	17,223	153,996	257,930

Available

+/- 2,045 SF

Plus basement for additional storage

 Virtual Tour



Interior Photos





 E. Independence Blvd (Hwy 74)
117,000 VPD

74

UNDERCURRENT
COFFEE

LEGION
BREWING
PLAZA MIDWOOD


12 AC Mixed-Use Redevelopment
Retail & Restaurants | 383 Apartment Units
Boutique Hotel | 400,000+ SF Office Space
Green Space


Diamond

CM
THE COMMON MARKET

SUPPERLAND

THOMAS
STREET TAVERN


Swooze
Y.A.F.O.
RESTAURANT

DILWORTH

CVS
pharmacy


USPS

WOO'Y GANG BAKERY

WELLS
FARGO

 Central Ave
21,500 VPD

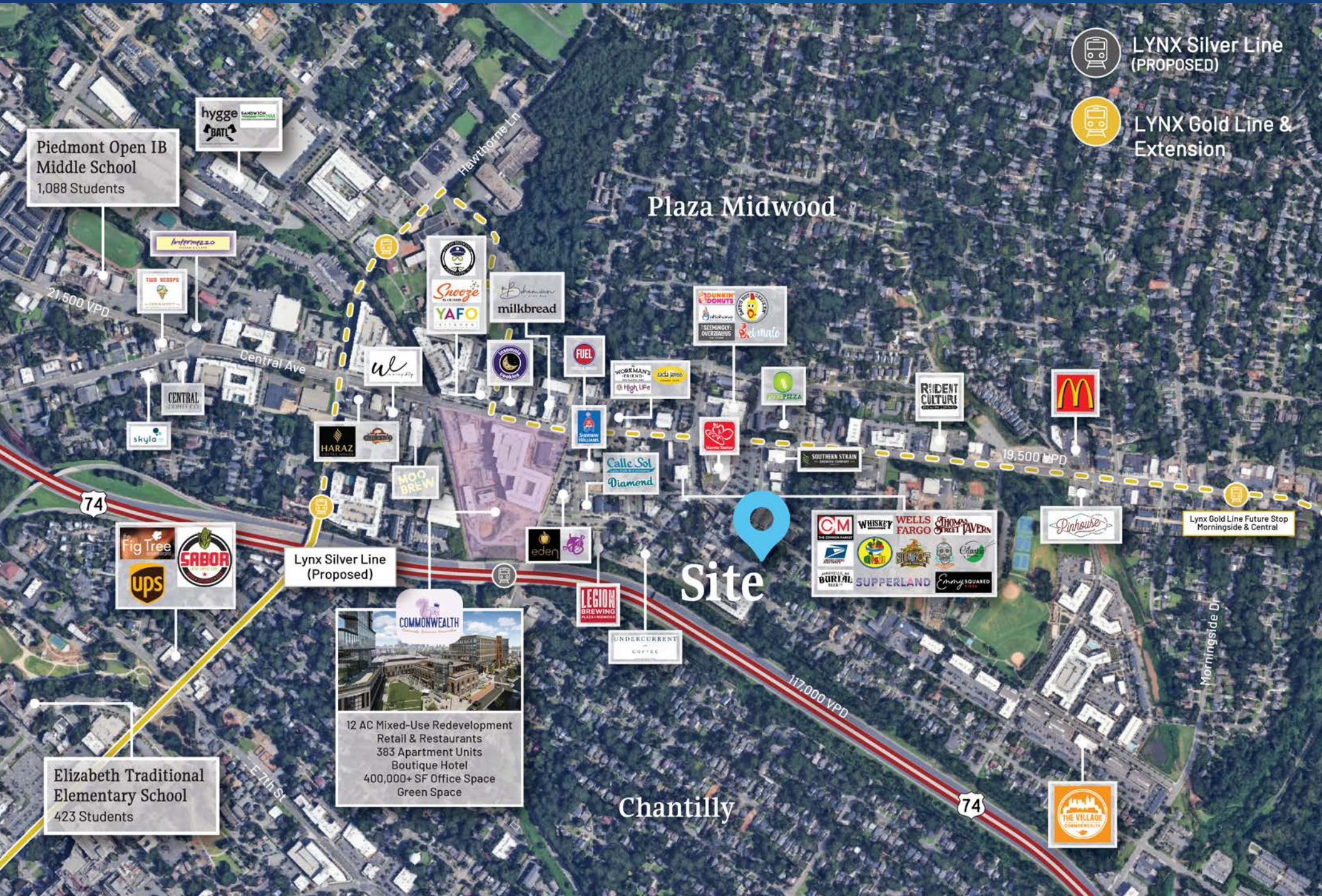

Harris Teeter

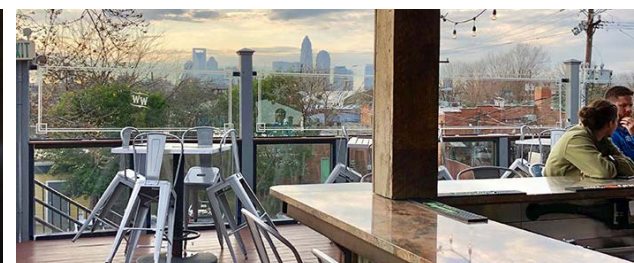
Plaza
Midwood

Site

McClintock Rd

Market Overview






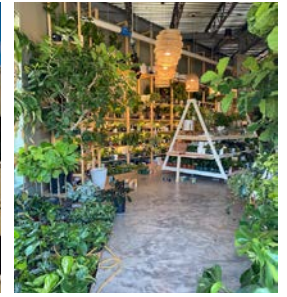


Plaza Midwood

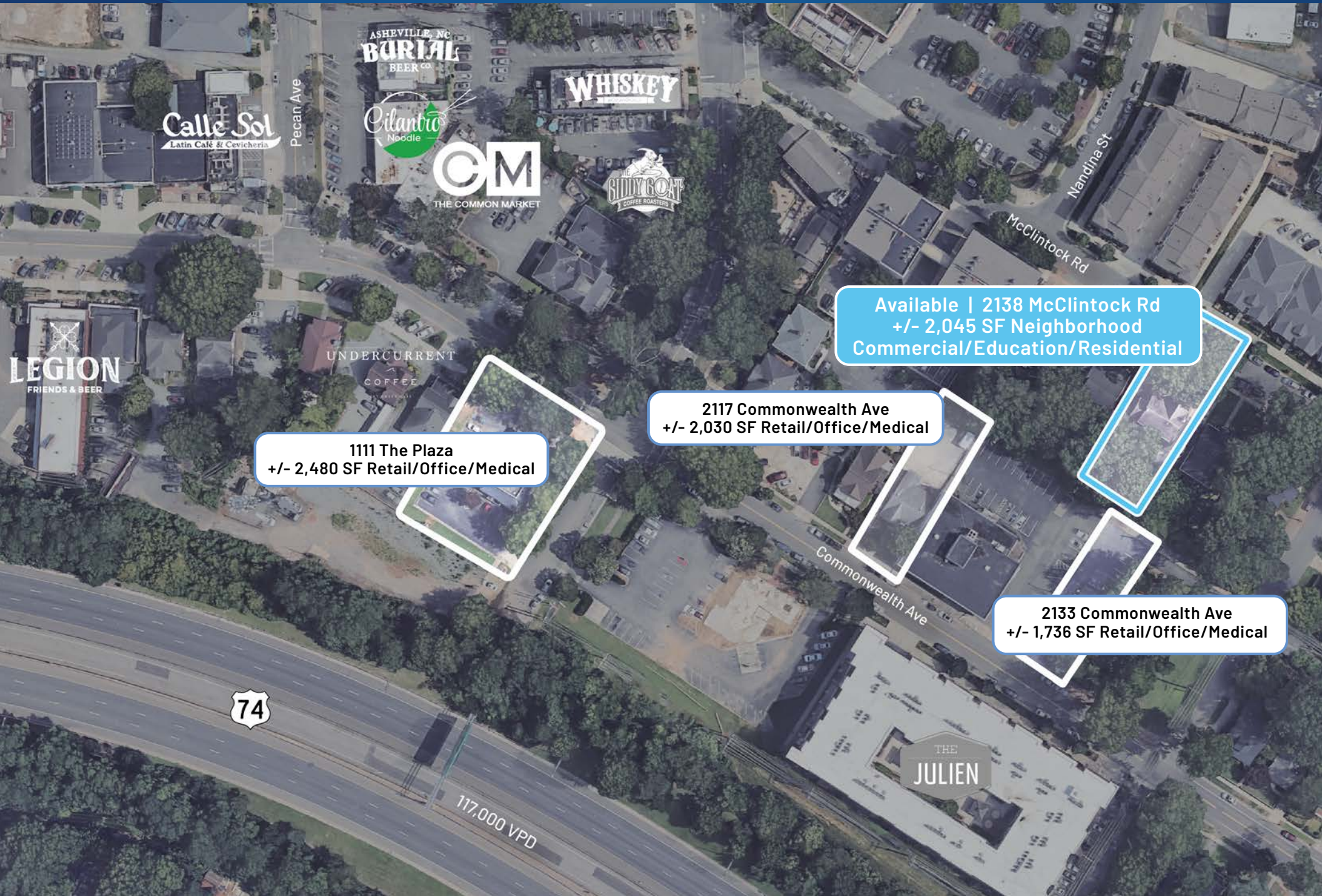
The go-to spot to meet, mingle, and unwind

Just a 1 mile cruise along Central Avenue from Uptown Charlotte will put you in a place where fashion, food, and art rule! Plaza Midwood is one of Charlotte's most unique, preeminent urban core neighborhoods. The neighborhood boasts a mixture of unique restaurants, art galleries, locally owned shops, popular bars, and live music venues. Recent years have witnessed its resurgence as a vibrant, highly sought after neighborhood with numerous upcoming and completed developments.

 2.5 Mi Distance to Uptown	 153,996 Daytime Population (3 Mile)	 56 Walkability Score	 21,500 Vehicles per Day on Central Ave
--	--	---	---



Available Properties Nearby



Calle Sol
Latin Café & Cevicheria

ASHEVILLE, NC
BURLIN
BEER CO.

Cilantro
Noodle

CM
THE COMMON MARKET

WHISKEY

SIDDY GOAT
COFFEE ROASTERS

UNDERCURRENT
COFFEE

LEGION
FRIENDS & BEER

THE
JULIEN

74

117,000 VPD

1111 The Plaza
+/- 2,480 SF Retail/Office/Medical

2117 Commonwealth Ave
+/- 2,030 SF Retail/Office/Medical

Available | 2138 McClintock Rd
+/- 2,045 SF Neighborhood
Commercial/Education/Residential

2133 Commonwealth Ave
+/- 1,736 SF Retail/Office/Medical



Contact for Details

Taylor Barnes

(704) 274-1224

taylor@thenicholscompany.com

John Nichols

(704) 373-9797

jnichols@thenicholscompany.com



Website

www.TheNicholsCompany.com

Phone

Office (704) 373-9797

Fax (704) 373-9798

Address

1204 Central Avenue, Suite 201

Charlotte, NC 28204

This information has been obtained from sources believed to be reliable. While we do not doubt its accuracy, we have not verified it and make no guarantee, warranty or representation to independently confirm its accuracy and completeness.