



# 2138 McClintock Rd

Charlotte, North Carolina, 28205



## Available for Lease

+/- 2,045 SF Neighborhood Commercial/Education/Residential in Plaza Midwood

## Property Overview

# 2138 McClintock Rd Available for Lease

± 2,045 SF available for lease in the heart of Plaza Midwood. The site is within walking distance of many of Plaza Midwood's iconic retail destinations and popular restaurants. Surrounded by multi-family and mixed-use developments, this site presents an excellent opportunity to enter one of Charlotte's most dynamic neighborhoods. This move-in ready space is ideal for a neighborhood commercial establishment, community center, education, or single family dwelling.

## Property Details

**Address** 2138 McClintock Rd | Charlotte, NC 28205

**Availability** +/- 2,045 SF Available for Lease

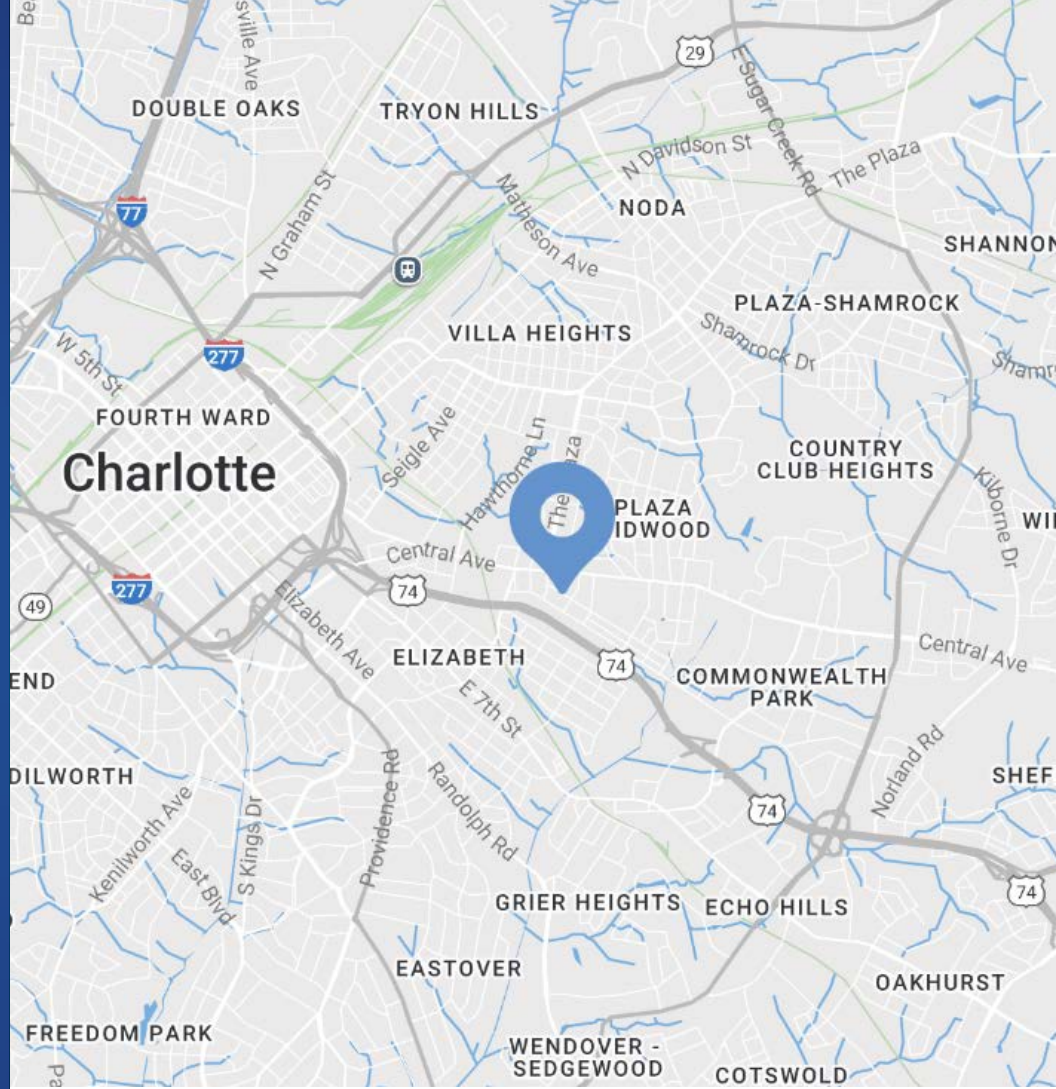
**Use** Neighborhood Commercial/Education/Residential

**Zoning** N1-C

**Parcels** 12901213

**Traffic Counts** Central Ave | 21,500 VPD  
Commonwealth | 6,439 VPD

**Lease Rate** Call for Leasing Details



## Demographics

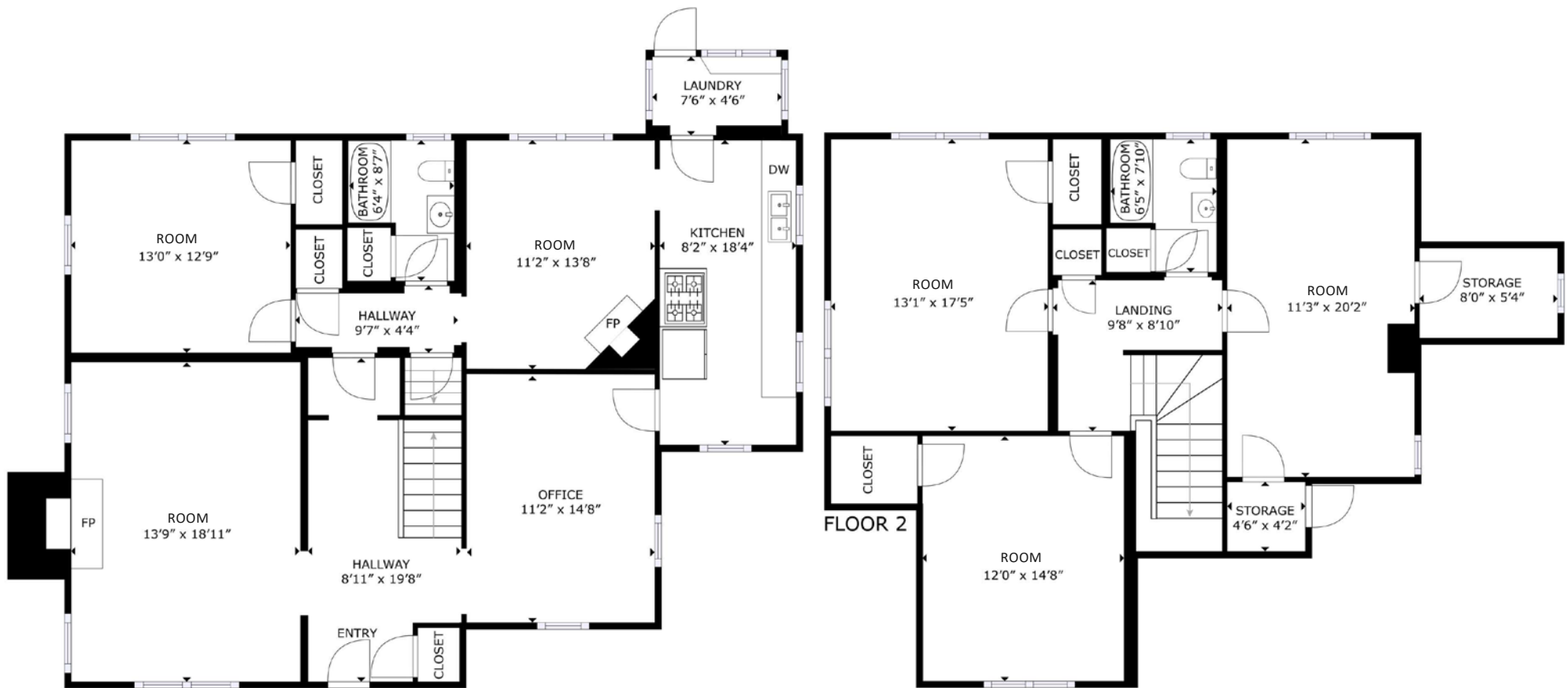
RADIUS	1 MILE	3 MILE	5 MILE
<b>2024 Population</b>	16,597	132,801	302,553
<b>Avg. Household Income</b>	\$141,161	\$138,781	\$122,532
<b>Median Household Income</b>	\$95,267	\$89,143	\$76,088
<b>Households</b>	8,860	66,509	138,011
<b>Daytime Employees</b>	17,223	153,996	257,930

## Available

+/- 2,045 SF

Plus basement for additional storage

 Virtual Tour



Interior Photos



# Site Overview



 E. Independence Blvd (Hwy 74)  
117,000 VPD

74

UNDERCURRENT  
COFFEE

LEGION  
BREWING  
PLAZA MIDWOOD

Diamond

CM  
THE COMMON MARKET

THOMAS  
STREET TAVERN

SUPPERLAND

Plaza  
Midwood

USPS

WELLS  
FARGO

Harris Teeter

COMMONWEALTH  
Community Commerce Connection

12 AC Mixed-Use Redevelopment  
Retail & Restaurants | 383 Apartment Units  
Boutique Hotel | 400,000+ SF Office Space  
Green Space

Swooze  
Y.A.F.O.  
RESTAURANT

DILWORTH

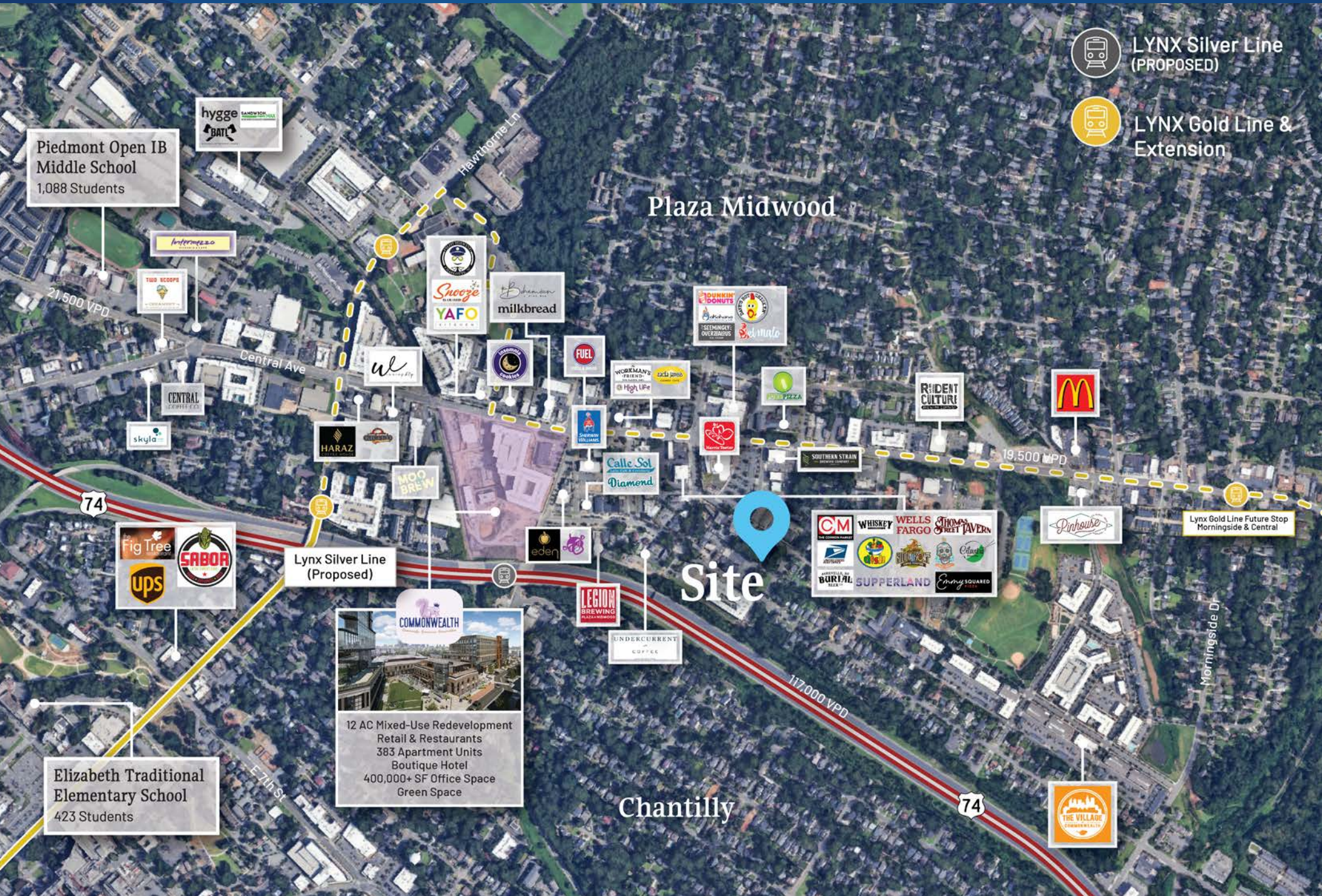
CVS  
pharmacy

WOOY GANG BAKERY

Central Ave  
21,500 VPD

McClintock Rd

# Market Overview



 LYNX Silver Line (PROPOSED)

 LYNX Gold Line & Extension

**Piedmont Open IB Middle School**  
1,088 Students

**Elizabeth Traditional Elementary School**  
423 Students

**12 AC Mixed-Use Redevelopment**  
Retail & Restaurants  
383 Apartment Units  
Boutique Hotel  
400,000+ SF Office Space  
Green Space

**Plaza Midwood**

**Chantilly**

**Site**

**Lynx Silver Line (Proposed)**

Lynx Gold Line Future Stop Morningside & Central

hygge SANDWICH BARS

Intermezzo

TWO SCOOPS

CENTRAL

skyla

Fig Tree  
ups  
SABOR

E-7th St

Hawthorne Ln

Snooze  
YAFO

milkbread

FUEL

WORMMAN'S

MOO BREW

eden

LEGION BREWING

UNDERCURRENT COFFEE

Calle Sol Diamond

WORKMAN'S

UNDERCURRENT COFFEE

DUNKIN' DONUTS

WELLER'S

RED BULL

CM

WHISKEY

WELLS FARGO

THOMAS STREET TAVERN

SUPPERLAND

EMMY SQUARED

PIZZA

SOUTHERN STRAIN

WELLER'S

WHISKEY

WELLS FARGO

THOMAS STREET TAVERN

SUPPERLAND

EMMY SQUARED

RIDICULOUS CULTURE

SOUTHERN STRAIN

WELLER'S

WHISKEY

WELLS FARGO

THOMAS STREET TAVERN

SUPPERLAND

EMMY SQUARED

McDonald's

SOUTHERN STRAIN

WELLER'S

WHISKEY

WELLS FARGO

THOMAS STREET TAVERN

SUPPERLAND

EMMY SQUARED

THE VILLAGE

Morningside Dr

74

74

21,500 VPD

19,500 VPD

117,000 VPD






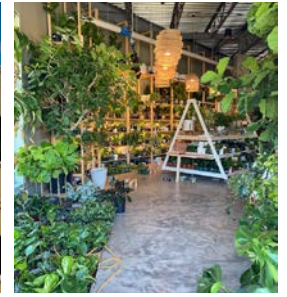
# Plaza Midwood

The go-to spot to meet, mingle, and unwind

Just a 1 mile cruise along Central Avenue from Uptown Charlotte will put you in a place where fashion, food, and art rule! Plaza Midwood is one of Charlotte's most unique, preeminent urban core neighborhoods. The neighborhood boasts a mixture of unique restaurants, art galleries, locally owned shops, popular bars, and live music venues. Recent years have witnessed its resurgence as a vibrant, highly sought after neighborhood with numerous upcoming and completed developments.

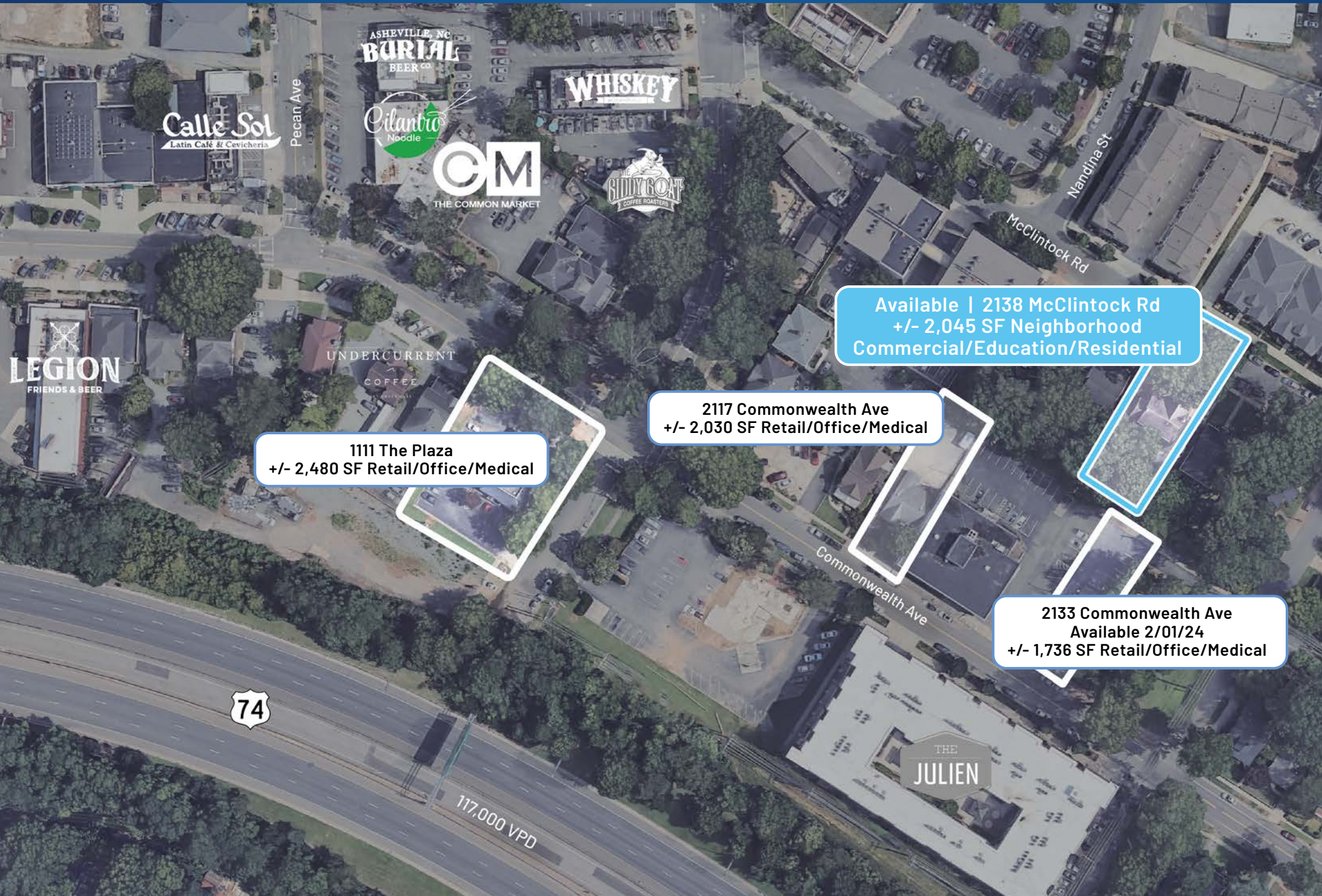


 <b>2.5 Mi</b> Distance to Uptown	 <b>153,996</b> Daytime Population (3 Mile)	 <b>56</b> Walkability Score	 <b>21,500</b> Vehicles per Day on Central Ave
--	--	---	---





Available Properties Nearby



**Calle Sol**  
Latin Café & Cevicheria

ASHEVILLE, NC  
**BURIAL**  
BEER CO.

**Cilantro**  
Noodle

**WHISKEY**

**CM**  
THE COMMON MARKET

**SIDDY GOAT**  
COFFEE ROASTERS

**UNDERCURRENT**  
COFFEE

**LEGION**  
FRIENDS & BEER

**1111 The Plaza**  
+/- 2,480 SF Retail/Office/Medical

**2117 Commonwealth Ave**  
+/- 2,030 SF Retail/Office/Medical

**Available | 2138 McClintock Rd**  
+/- 2,045 SF Neighborhood  
Commercial/Education/Residential

**2133 Commonwealth Ave**  
Available 2/01/24  
+/- 1,736 SF Retail/Office/Medical

**74**

117,000 VPD

THE  
**JULIEN**



Contact for Details

## Taylor Barnes

(704) 274-1224

taylor@thenicholscompany.com

## John Nichols

(704) 373-9797

jnichols@thenicholscompany.com



### Website

[www.TheNicholsCompany.com](http://www.TheNicholsCompany.com)

### Phone

Office (704) 373-9797

Fax (704) 373-9798

### Address

1204 Central Avenue, Suite 201

Charlotte, NC 28204

This information has been obtained from sources believed to be reliable. While we do not doubt its accuracy, we have not verified it and make no guarantee, warranty or representation to independently confirm its accuracy and completeness.