



1111 The Plaza

Charlotte, North Carolina, 28205

Available for Lease

+/- 2,480 SF Retail/Office/Medical in Plaza Midwood

Property Overview

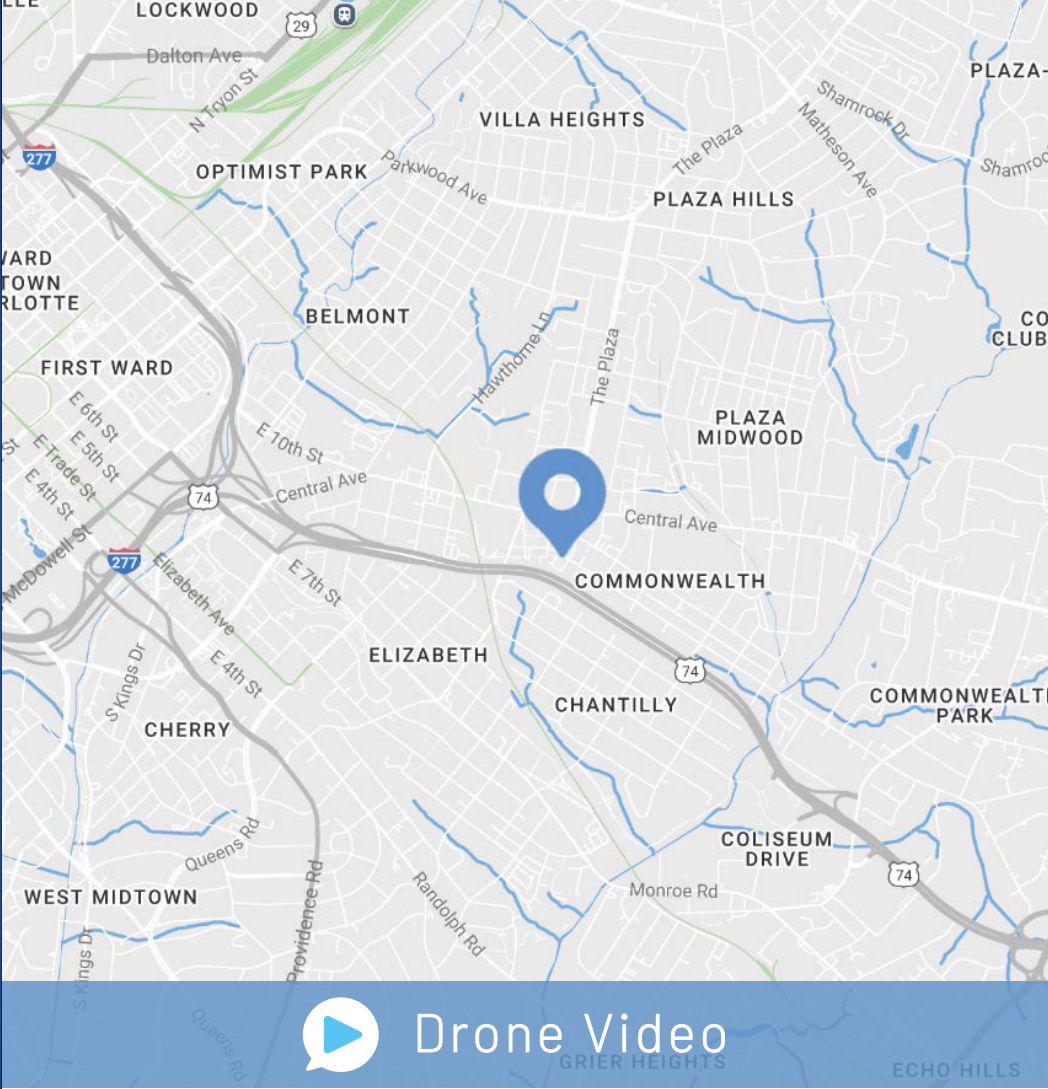
1111 The Plaza

Available for Lease

± 2,480 SF available for lease in the heart of Plaza Midwood. The site is within walking distance of many of Plaza Midwood’s iconic retail destinations and popular restaurants. Surrounded by multi-family and mixed-use developments, this site presents an excellent opportunity to enter one of Charlotte’s most dynamic neighborhoods. This move-in-ready space offers ample parking and is ideal for retail, office, food & beverage, or medical office use.

Property Details

Address	1111 The Plaza Charlotte, NC 28205
Availability	+/- 2,480 SF Available for Lease
Use	Retail, Office, Medical
Zoning	CAC-2 (CD)
Parcels	08117612
Traffic Counts	Central Ave 21,500 VPD Commonwealth Ave S 6,439 VPD
Lease Rate	Call for Leasing Details



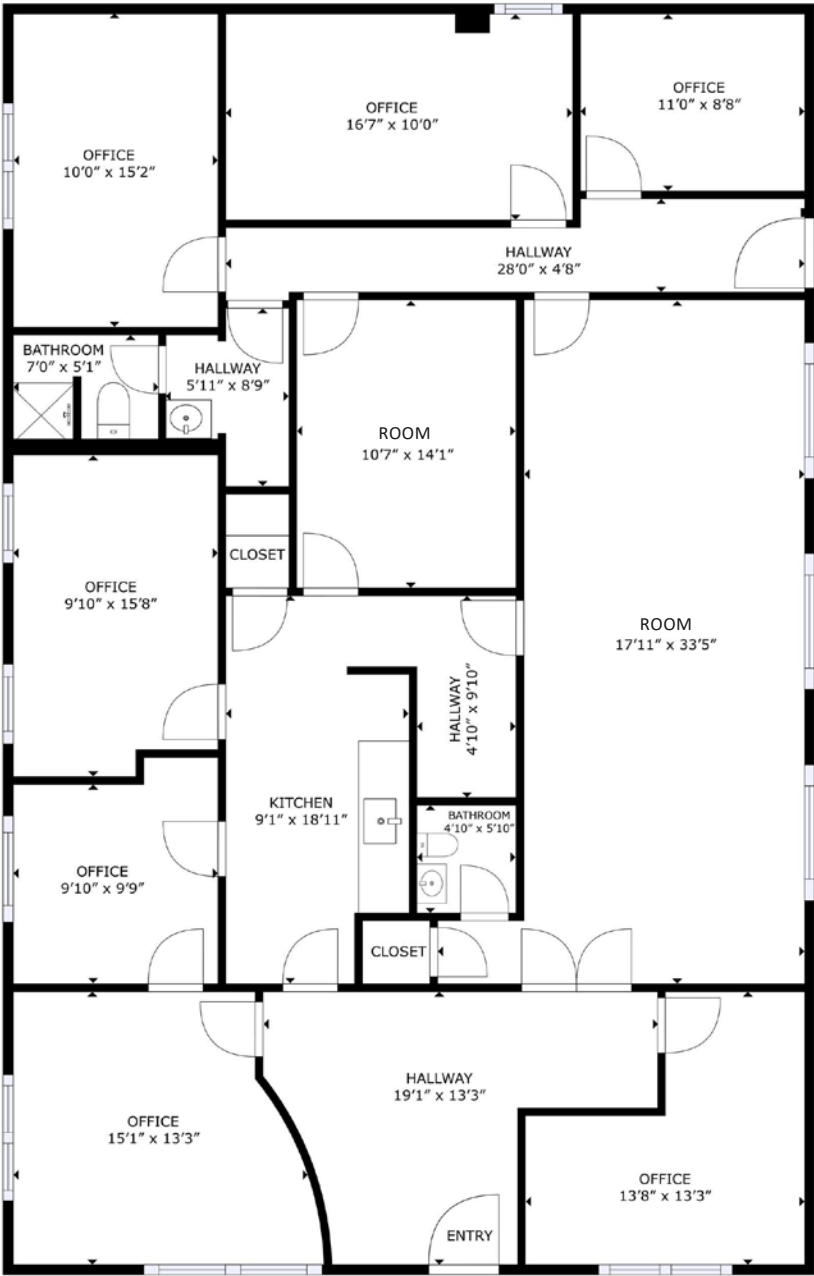
Demographics

RADIUS	1 MILE	3 MILE	5 MILE
2024 Population	16,597	132,801	302,553
Avg. Household Income	\$141,161	\$138,781	\$122,532
Median Household Income	\$95,267	\$89,143	\$76,088
Households	8,860	66,509	138,011
Daytime Employees	17,223	153,996	257,930

Available

+/- 2,480 SF

 Virtual Tour



Interior Photos





12 AC Mixed-Use Redevelopment
Retail & Restaurants | 383 Apartment Units
Boutique Hotel | 400,000+ SF Office Space
Green Space

E. Independence Blvd (Hwy 74)
117,000 VPD

Central Ave
21,500 VPD



UNDERCURRENT
COFFEE

Site

Plaza
Midwood



milkbread

WOLF GANG BASTY



STONIS STREET TAVERN

Commonwealth Ave

Market Overview





Plaza Midwood

The go-to spot to meet, mingle, and unwind

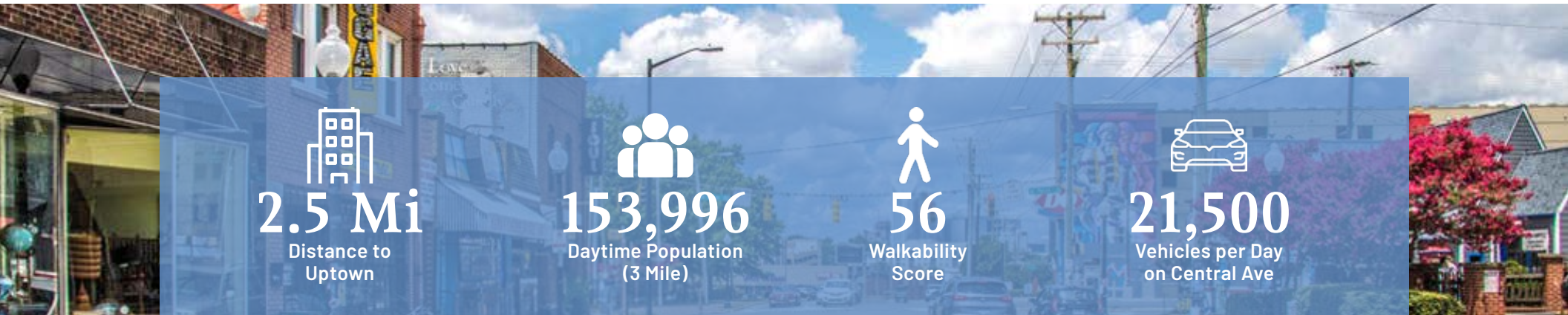
Just a 1 mile cruise along Central Avenue from Uptown Charlotte will put you in a place where fashion, food, and art rule! Plaza Midwood is one of Charlotte's most unique, preeminent urban core neighborhoods. The neighborhood boasts a mixture of unique restaurants, art galleries, locally owned shops, popular bars, and live music venues. Recent years have witnessed its resurgence as a vibrant, highly sought after neighborhood with numerous upcoming and completed developments.

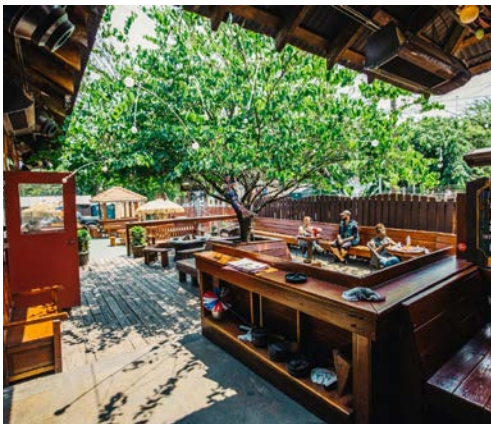
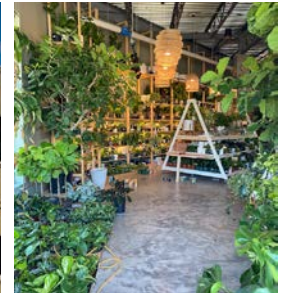

2.5 Mi
Distance to Uptown


153,996
Daytime Population
(3 Mile)


56
Walkability Score


21,500
Vehicles per Day
on Central Ave





Available Properties Nearby





Contact for Details

Taylor Barnes

(704) 274-1224

taylor@thenicholscompany.com

John Nichols

(704) 373-9797

jnichols@thenicholscompany.com



Website

www.TheNicholsCompany.com

Phone

Office (704) 373-9797

Fax (704) 373-9798

Address

1204 Central Avenue, Suite 201

Charlotte, NC 28204

This information has been obtained from sources believed to be reliable. While we do not doubt its accuracy, we have not verified it and make no guarantee, warranty or representation to independently confirm its accuracy and completeness.