



2133 Commonwealth Ave

Charlotte, North Carolina, 28205



Available for Lease

+/- 1,834 SF Retail/Office/Medical in Plaza Midwood

Property Overview

2133 Commonwealth Ave Available for Lease

± 1,834 SF available for lease in the heart of Plaza Midwood. The site is within walking distance of many of Plaza Midwood's iconic retail destinations and popular restaurants. Surrounded by multi-family and mixed-use developments, this site presents an excellent opportunity to enter one of Charlotte's most dynamic neighborhoods. This move-in-ready space offers ample parking and is ideal for retail, office, or medical office use.

Property Details

Address 2133 Commonwealth Ave | Charlotte, NC 28205

Availability +/- 1,834 SF Available for Lease

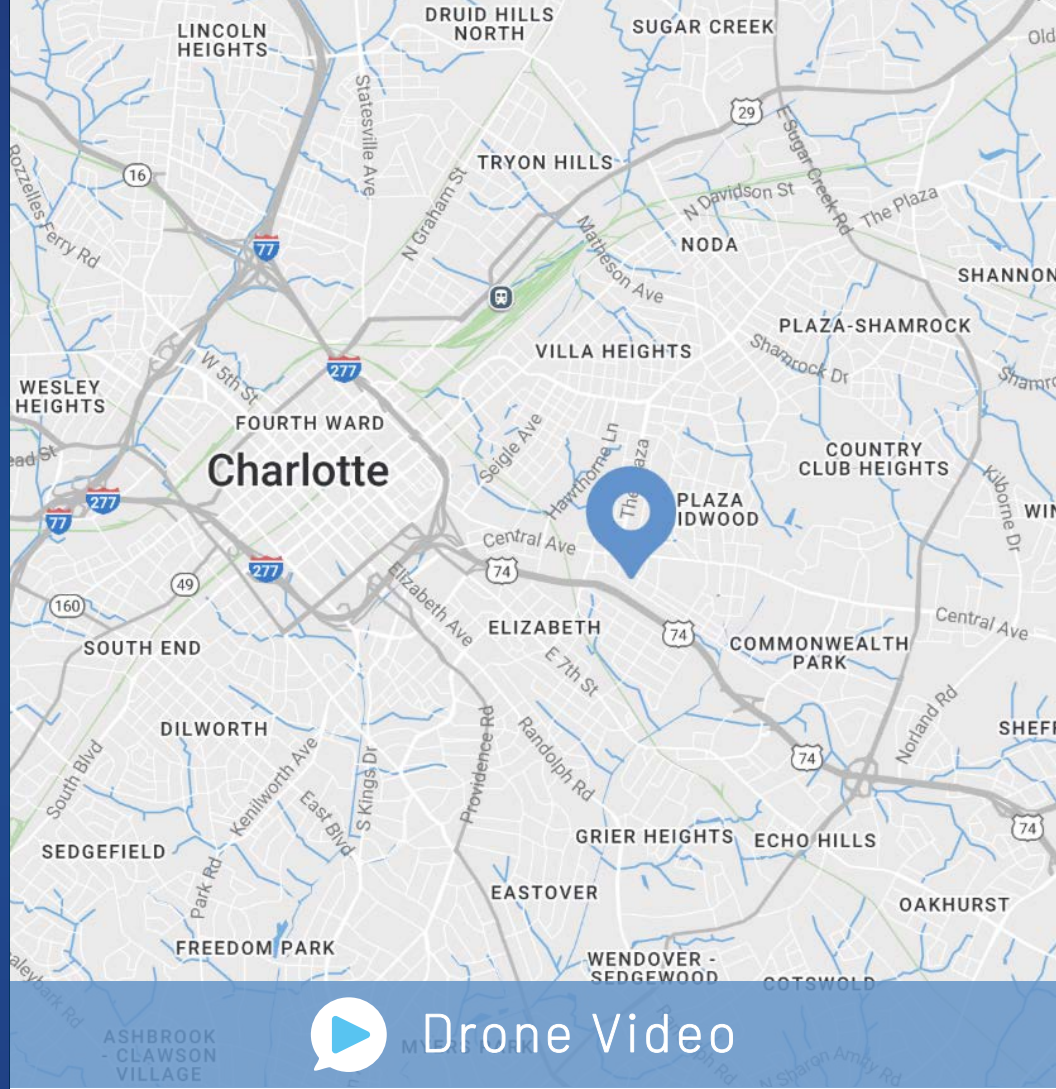
Use Retail, Office, Medical

Zoning MUDD-0

Parcel ID 12901208

Traffic Counts Central Ave | 21,500 VPD
Commonwealth | 6,439 VPD

Lease Rate Call for Leasing Details

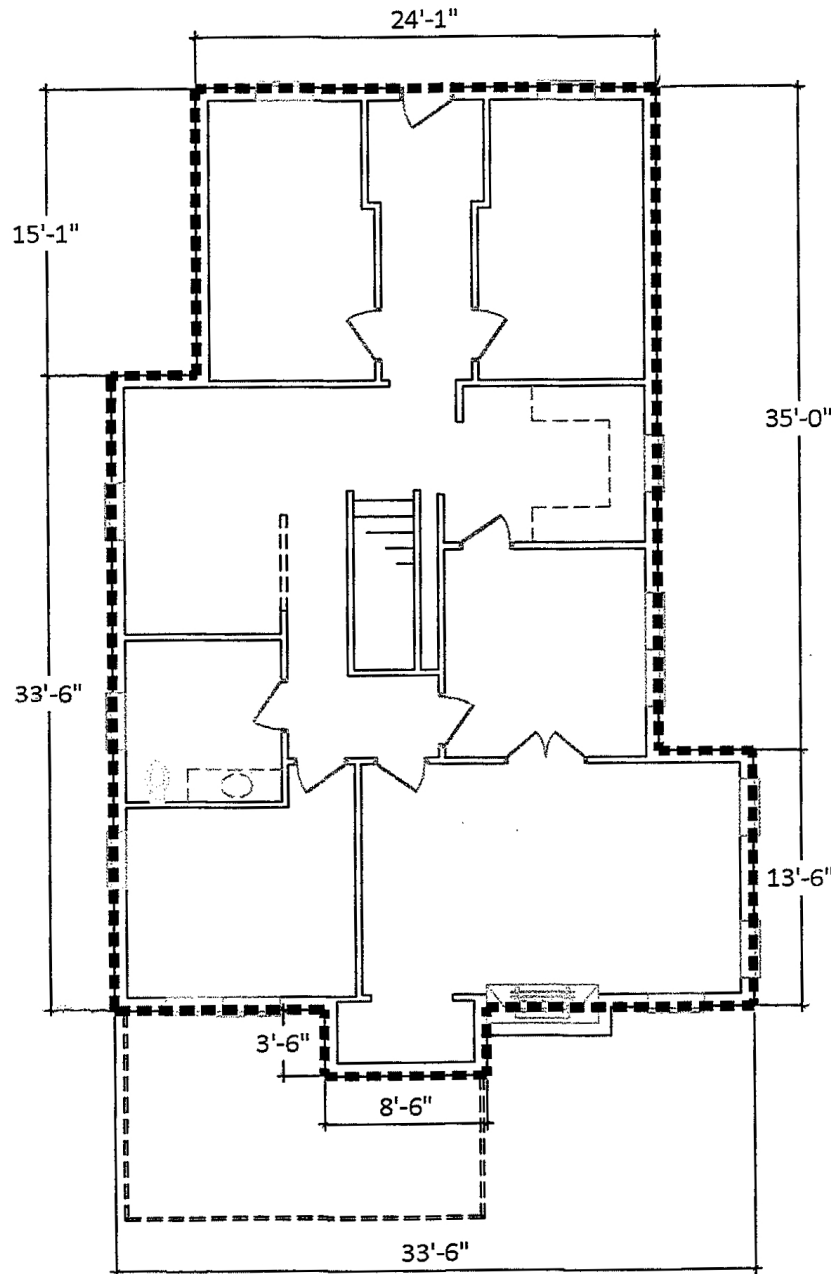


Demographics

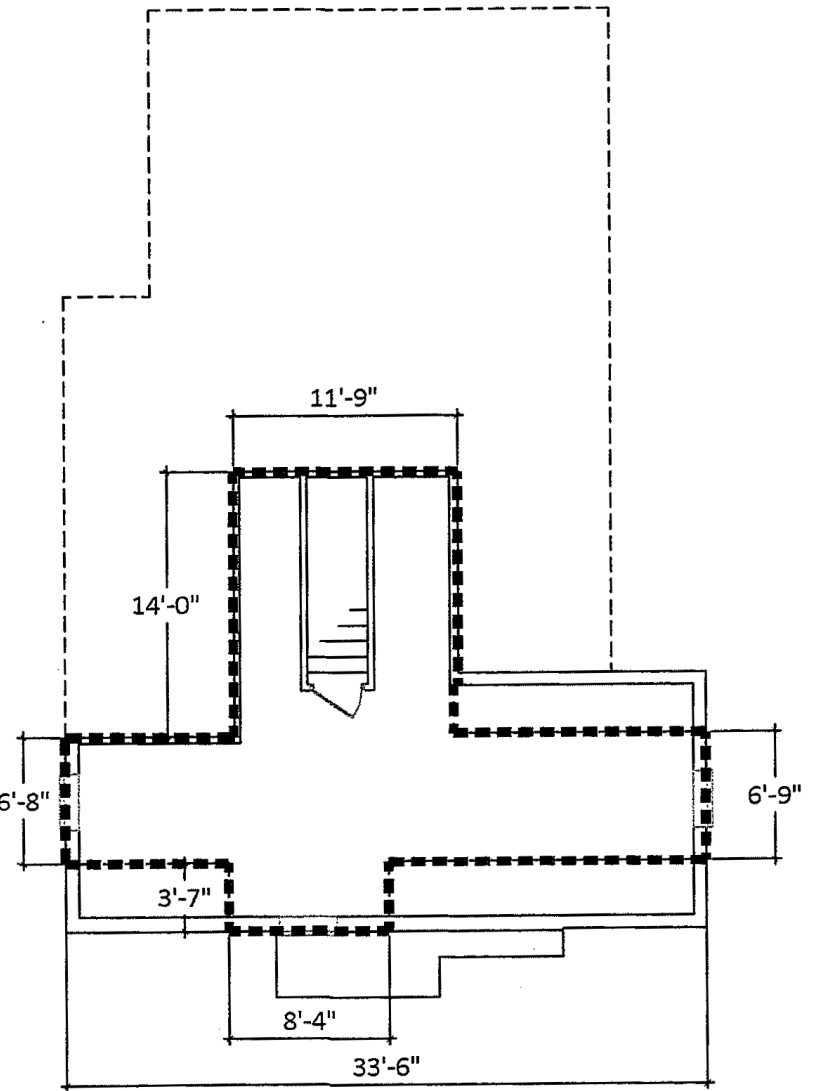
RADIUS	1 MILE	3 MILE	5 MILE
2024 Population	16,597	132,801	302,553
Avg. Household Income	\$141,161	\$138,781	\$122,532
Median Household Income	\$95,267	\$89,143	\$76,088
Households	8,860	66,509	138,011
Daytime Employees	17,223	153,996	257,930

Available

+/- 1,834 SF



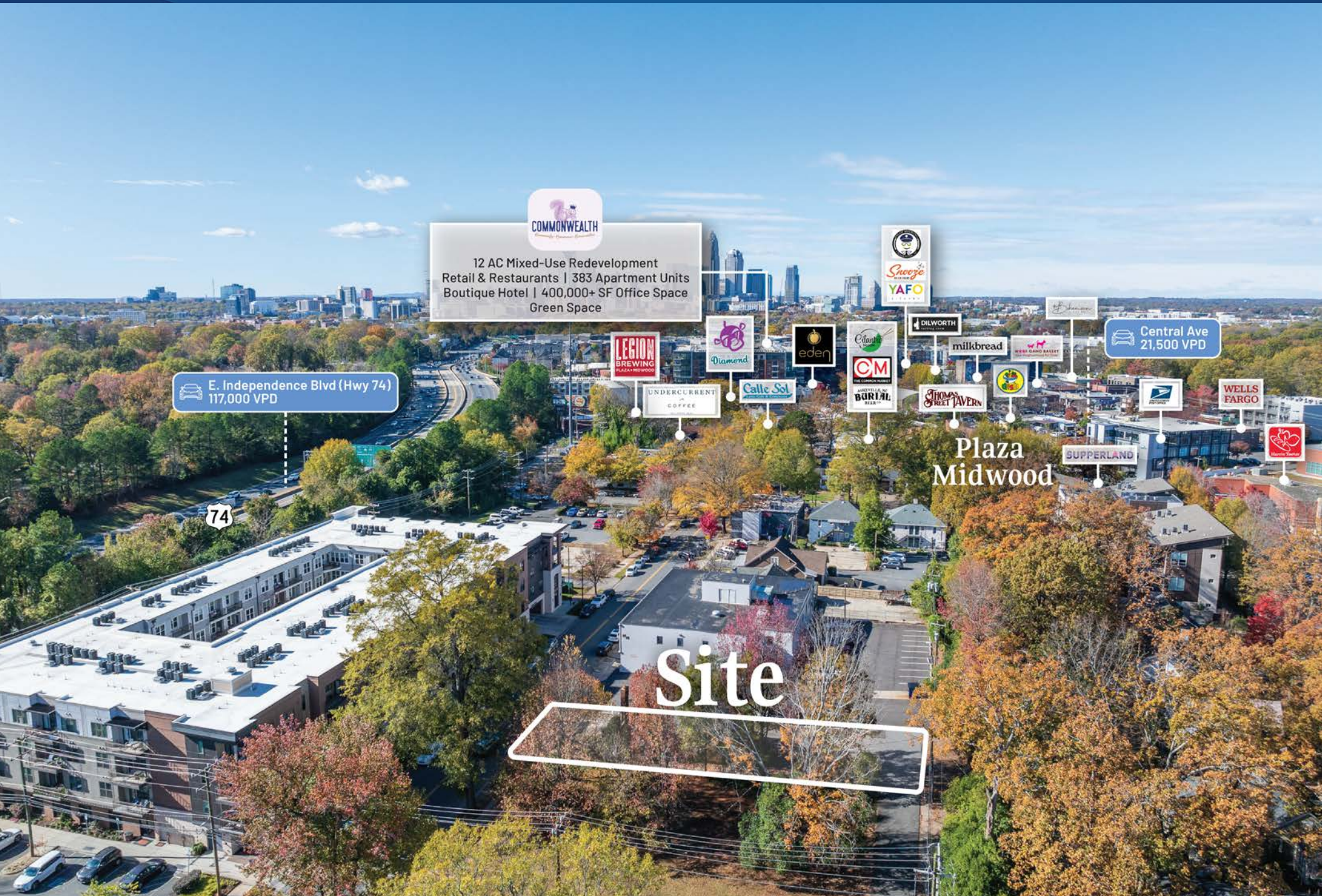
First Floor



Second Floor

Interior Photos





COMMONWEALTH
12 AC Mixed-Use Redevelopment
Retail & Restaurants | 383 Apartment Units
Boutique Hotel | 400,000+ SF Office Space
Green Space

E. Independence Blvd (Hwy 74)
117,000 VPD

Central Ave
21,500 VPD

Plaza
Midwood

Site



74

Market Overview



Piedmont Open IB Middle School
1,088 Students

Elizabeth Traditional Elementary School
423 Students

COMMONWEALTH

12 AC Mixed-Use Redevelopment
Retail & Restaurants
383 Apartment Units
Boutique Hotel
400,000+ SF Office Space
Green Space

LYNX Silver Line (PROPOSED)

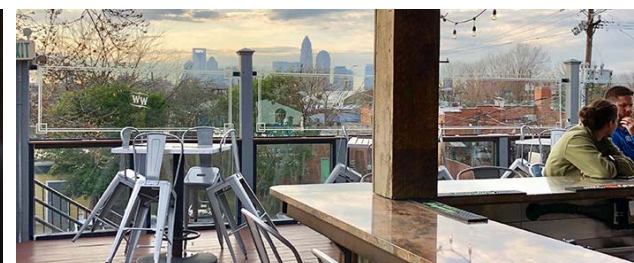
LYNX Gold Line & Extension

Plaza Midwood

Site

Chantilly

Lynx Gold Line Future Stop
Morningside & Central



Plaza Midwood

The go-to spot to meet, mingle, and unwind

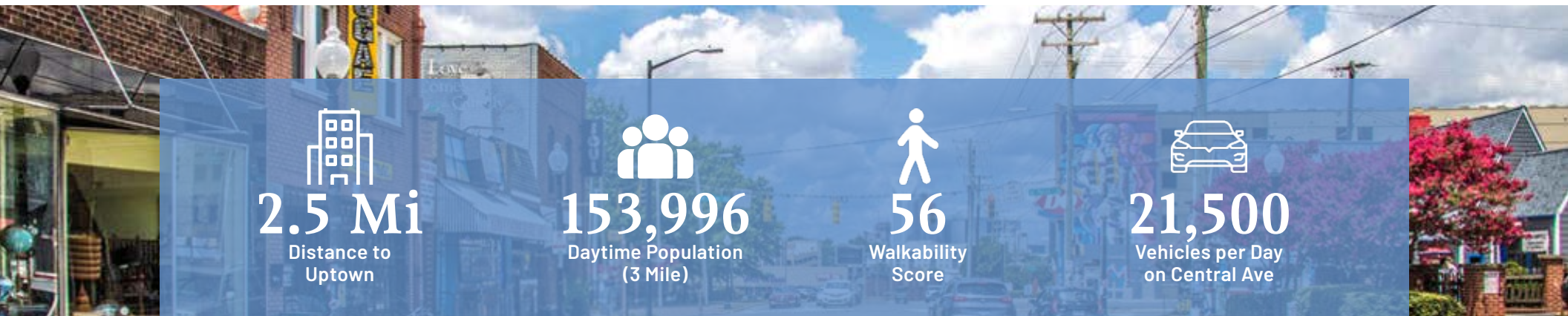
Just a 1 mile cruise along Central Avenue from Uptown Charlotte will put you in a place where fashion, food, and art rule! Plaza Midwood is one of Charlotte's most unique, preeminent urban core neighborhoods. The neighborhood boasts a mixture of unique restaurants, art galleries, locally owned shops, popular bars, and live music venues. Recent years have witnessed its resurgence as a vibrant, highly sought after neighborhood with numerous upcoming and completed developments.

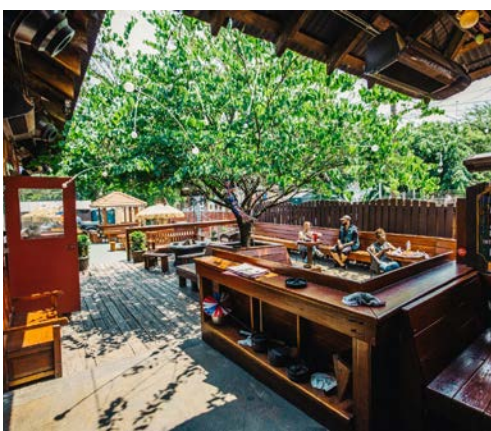
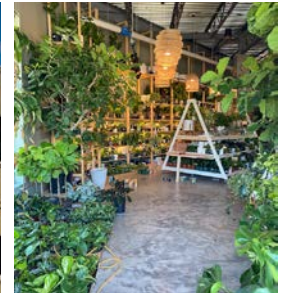

2.5 Mi
Distance to Uptown


153,996
Daytime Population (3 Mile)


56
Walkability Score


21,500
Vehicles per Day on Central Ave





Available Properties Nearby



Calle Sol
Latin Café & Cevicheria

ASHEVILLE, NC
BURIAL
BEER CO

Cilantro
Noodle

CM
THE COMMON MARKET

WHISKEY

SIDLY GOAT
COFFEE ROASTERS

LEGION
FRIENDS & BEER

UNDERCURRENT
COFFEE

THE
JULIAN

1111 The Plaza
+/- 2,480 SF Retail/Office/Medical

2117 Commonwealth Ave
+/- 2,030 SF Retail/Office/Medical

2138 McClintock Rd
+/- 2,045 SF Neighborhood
Commercial/Education/Residential

2133 Commonwealth Ave
+/- 1,834 SF Retail/Office/Medical

74

117,000 VPD



Contact for Details

Taylor Barnes

(704) 274-1224

taylor@thenicholscompany.com

John Nichols

(704) 373-9797

jnichols@thenicholscompany.com



Website

www.TheNicholsCompany.com

Phone

Office (704) 373-9797

Fax (704) 373-9798

Address

1204 Central Avenue, Suite 201

Charlotte, NC 28204

This information has been obtained from sources believed to be reliable. While we do not doubt its accuracy, we have not verified it and make no guarantee, warranty or representation to independently confirm its accuracy and completeness.