



# 2133 Commonwealth Ave

Charlotte, North Carolina, 28205



**Available for Lease**

+/- 1,834 SF Retail/Office/Medical in Plaza Midwood



## Property Overview

# 2133 Commonwealth Ave Available for Lease

± 1,834 SF available for lease in the heart of Plaza Midwood. The site is within walking distance of many of Plaza Midwood's iconic retail destinations and popular restaurants. Surrounded by multi-family and mixed-use developments, this site presents an excellent opportunity to enter one of Charlotte's most dynamic neighborhoods. This move-in-ready space offers ample parking and is ideal for retail, office, or medical office use.

## Property Details

**Address** 2133 Commonwealth Ave | Charlotte, NC 28205

**Availability** +/- 1,834 SF Available for Lease

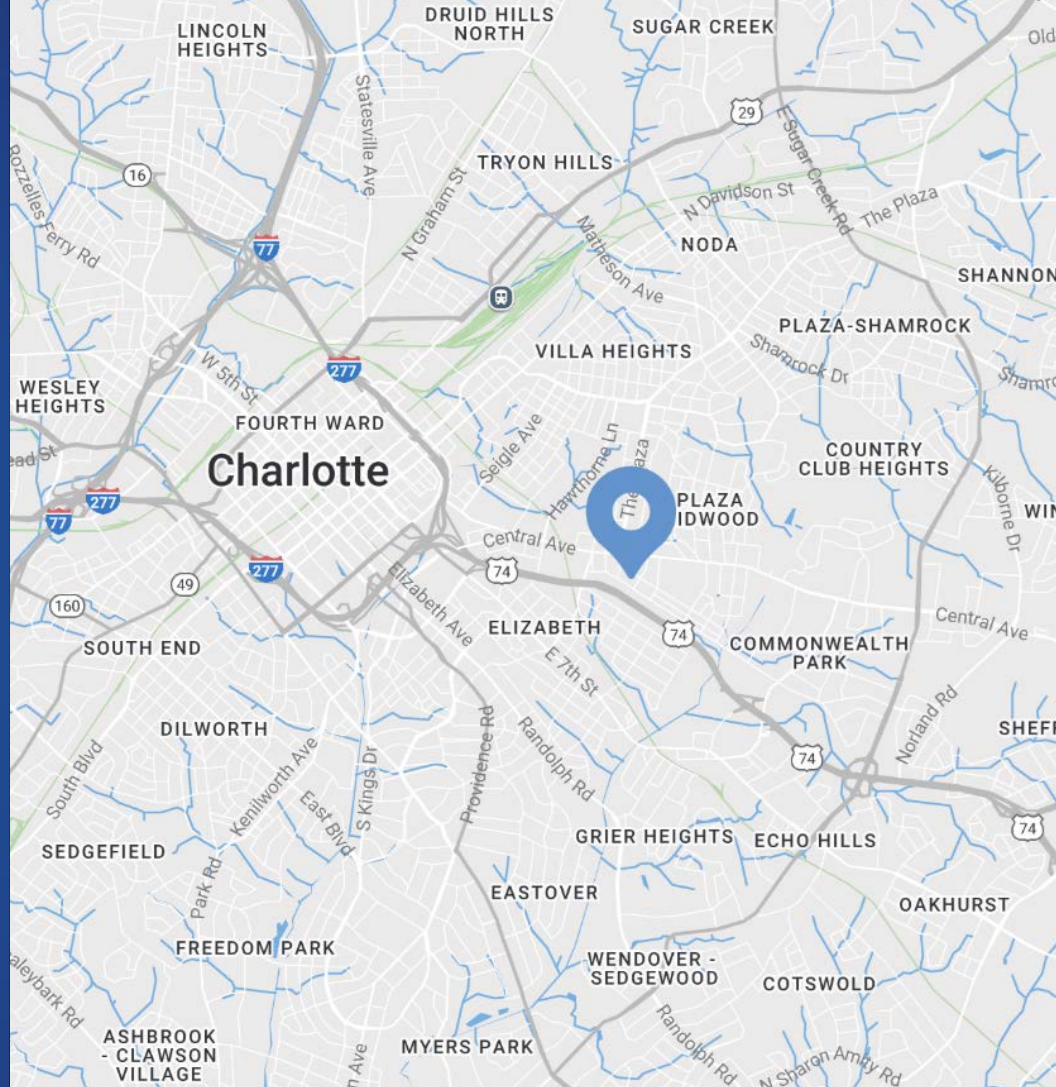
**Use** Retail, Office, Medical

**Zoning** MUDD-0

**Parcel ID** 12901208

**Traffic Counts** Central Ave | 21,500 VPD  
Commonwealth | 6,439 VPD

**Lease Rate** Call for Leasing Details

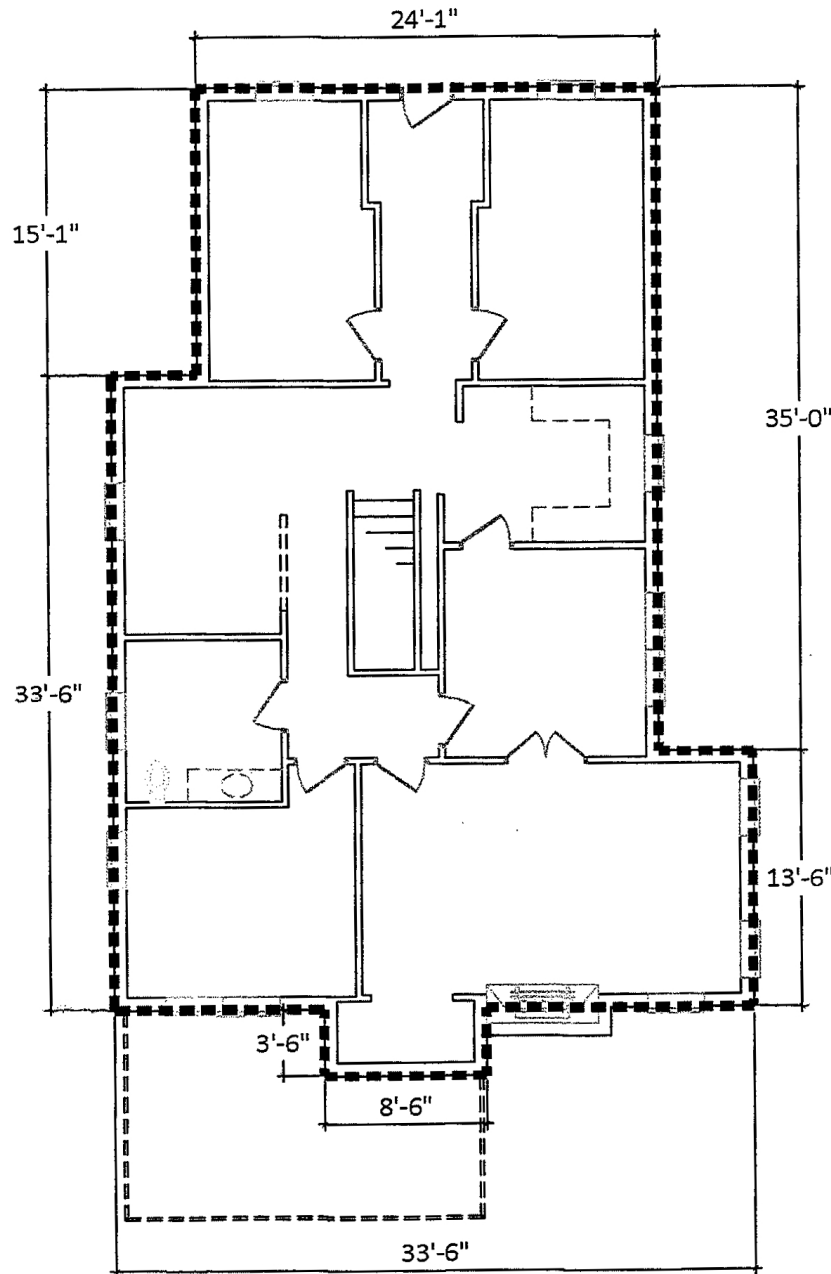


## Demographics

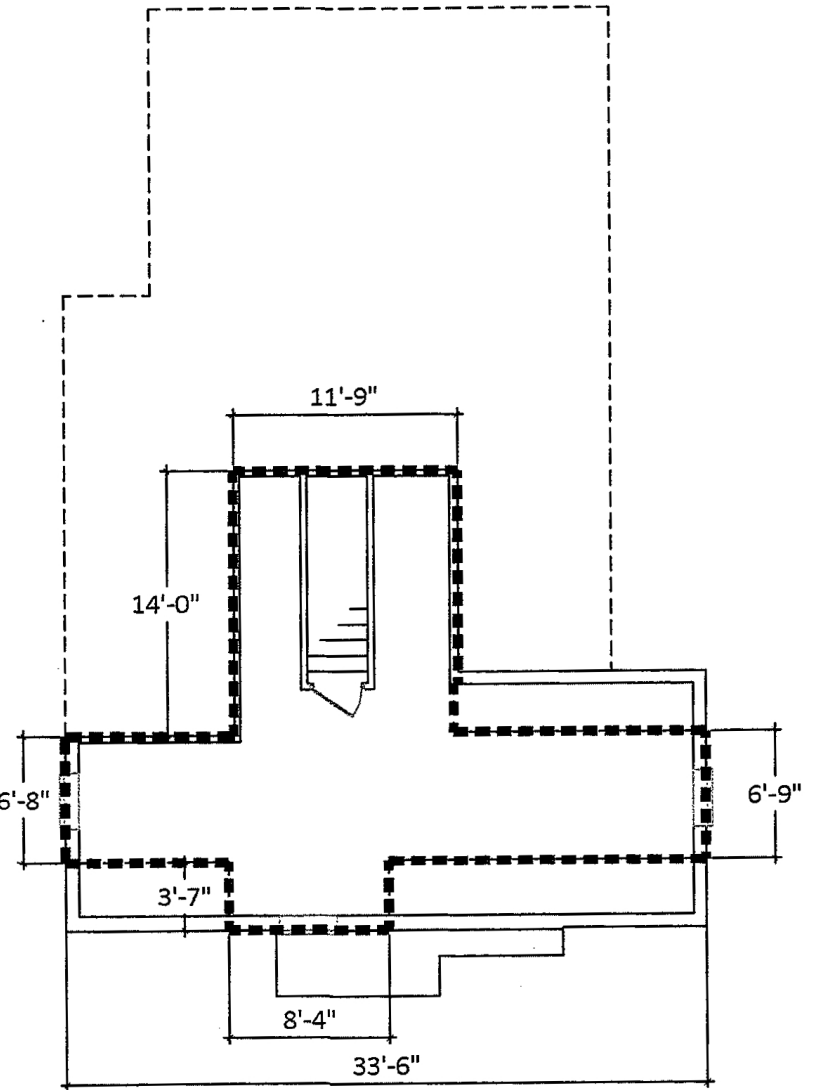
RADIUS	1 MILE	3 MILE	5 MILE
<b>2024 Population</b>	16,597	132,801	302,553
<b>Avg. Household Income</b>	\$141,161	\$138,781	\$122,532
<b>Median Household Income</b>	\$95,267	\$89,143	\$76,088
<b>Households</b>	8,860	66,509	138,011
<b>Daytime Employees</b>	17,223	153,996	257,930

Available

+/- 1,834 SF

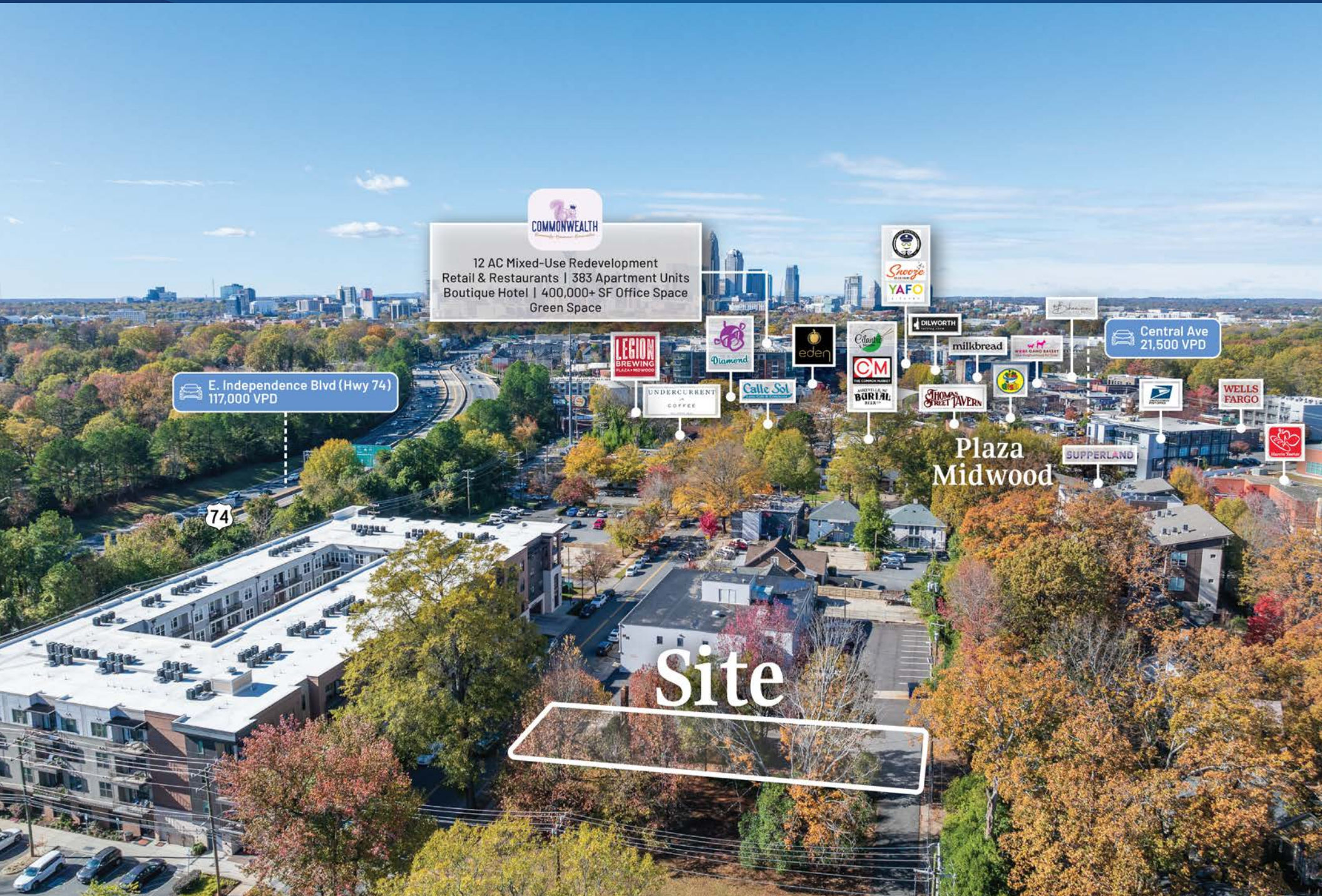


First Floor



Second Floor





**COMMONWEALTH**  
12 AC Mixed-Use Redevelopment  
Retail & Restaurants | 383 Apartment Units  
Boutique Hotel | 400,000+ SF Office Space  
Green Space

**E. Independence Blvd (Hwy 74)**  
117,000 VPD

**Central Ave**  
21,500 VPD

**Site**

**Plaza  
Midwood**

**74**

**LEGION  
BREWING**  
PLAZA + MIDWOOD

**UNDERCURRENT**  
COFFEE

**Diamond**

**eden**

**Calie Sol**

**CM**  
THE COMMON MARKET

**BURLAL**  
BREAD

**Swoozie**  
Y.A.F.O.

**DILWORTH**

**milkbread**

**WESTLAND BAKERY**

**THOMAS STREET TAVERN**

**SUPPERLAND**

**WELLS  
FARGO**

**WELLS  
FARGO**



# Market Overview



LYNX Silver Line (PROPOSED)

LYNX Gold Line & Extension

Piedmont Open IB Middle School  
1,088 Students

Plaza Midwood

Lynx Silver Line (Proposed)

Site

Lynx Gold Line Future Stop  
Morningside & Central

Elizabeth Traditional Elementary School  
423 Students

**COMMONWEALTH**

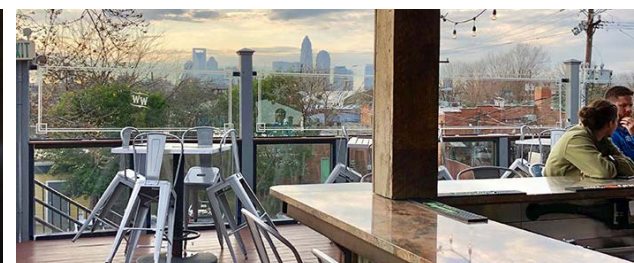


12 AC Mixed-Use Redevelopment  
Retail & Restaurants  
383 Apartment Units  
Boutique Hotel  
400,000+ SF Office Space  
Green Space

Chantilly

THE VILLAGE LINDSEYVILLE








# Plaza Midwood

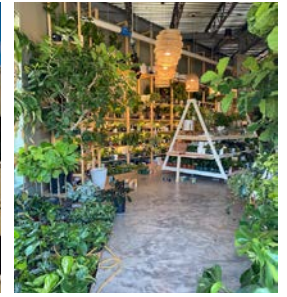
The go-to spot to meet, mingle, and unwind

Just a 1 mile cruise along Central Avenue from Uptown Charlotte will put you in a place where fashion, food, and art rule! Plaza Midwood is one of Charlotte's most unique, preeminent urban core neighborhoods. The neighborhood boasts a mixture of unique restaurants, art galleries, locally owned shops, popular bars, and live music venues. Recent years have witnessed its resurgence as a vibrant, highly sought after neighborhood with numerous upcoming and completed developments.

 <b>2.5 Mi</b> Distance to Uptown	 <b>153,996</b> Daytime Population (3 Mile)	 <b>56</b> Walkability Score	 <b>21,500</b> Vehicles per Day on Central Ave
--	--	---	---









# Available Properties Nearby



**Calle Sol**  
Latin Café & Cevicheria

ASHEVILLE, NC  
**BURIAL**  
BEER CO

**Cilantro**  
Noodle

**CM**  
THE COMMON MARKET

**WHISKEY**

**SIDLY GOAT**  
COFFEE ROASTERS

**LEGION**  
FRIENDS & BEER

UNDERCURRENT  
COFFEE

**1111 The Plaza**  
+/- 2,480 SF Retail/Office/Medical

**2117 Commonwealth Ave**  
+/- 2,030 SF Retail/Office/Medical

**2138 McClintock Rd**  
+/- 2,045 SF Neighborhood  
Commercial/Education/Residential

**2133 Commonwealth Ave**  
+/- 1,834 SF Retail/Office/Medical

**74**

117,000 VPD

THE  
**JULIEN**





Contact for Details

## Taylor Barnes

(704) 274-1224

taylor@thenicholscompany.com

## John Nichols

(704) 373-9797

jnichols@thenicholscompany.com



### Website

[www.TheNicholsCompany.com](http://www.TheNicholsCompany.com)

### Phone

Office (704) 373-9797

Fax (704) 373-9798

### Address

1204 Central Avenue, Suite 201

Charlotte, NC 28204

This information has been obtained from sources believed to be reliable. While we do not doubt its accuracy, we have not verified it and make no guarantee, warranty or representation to independently confirm its accuracy and completeness.