



2040-A Randolph Rd

Charlotte, North Carolina, 28207



Available for Lease

+/- 2,233 SF Office Condo

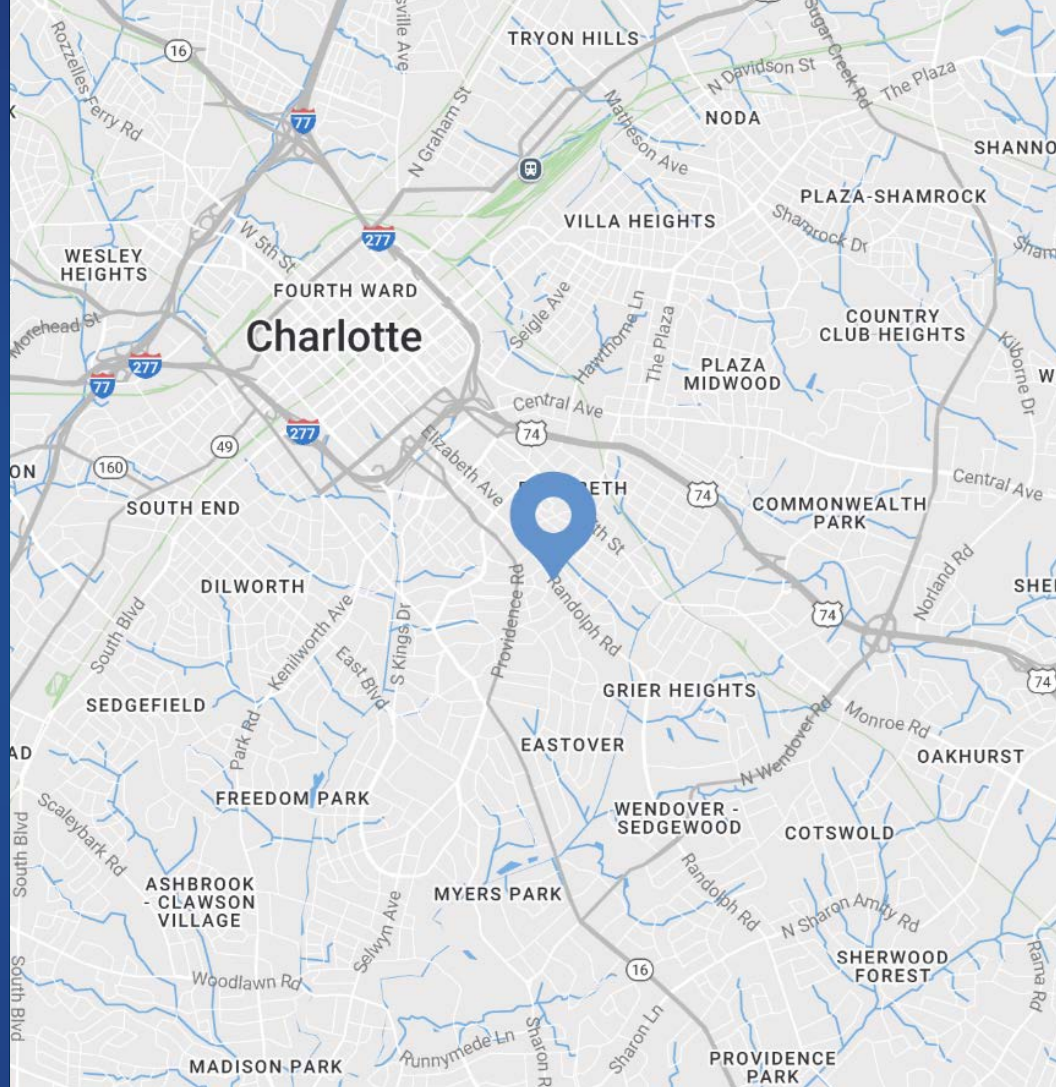
Property Overview

2040-A Randolph Rd Available for Lease

Great multiple office condo located in close proximity to medical facilities on Randolph Rd in Charlotte, NC. Offering +/- 2,233 SF with N1-A zoning, this property is ideal for medical or professional use. This versatile space provides excellent accessibility in a prime location, surrounded by the retail and restaurants in nearby Elizabeth, Midtown, and Providence Rd.

Property Details

Address	2040-A Randolph Rd Charlotte, NC, 28207
Availability	+/- 2,233 SF Available for Lease
Acreage	+/- 0.269 AC
Use	Office
Zoning	N1-A
Parcel	15501123
TICAM	TBD
Lease Rate	\$32 psf



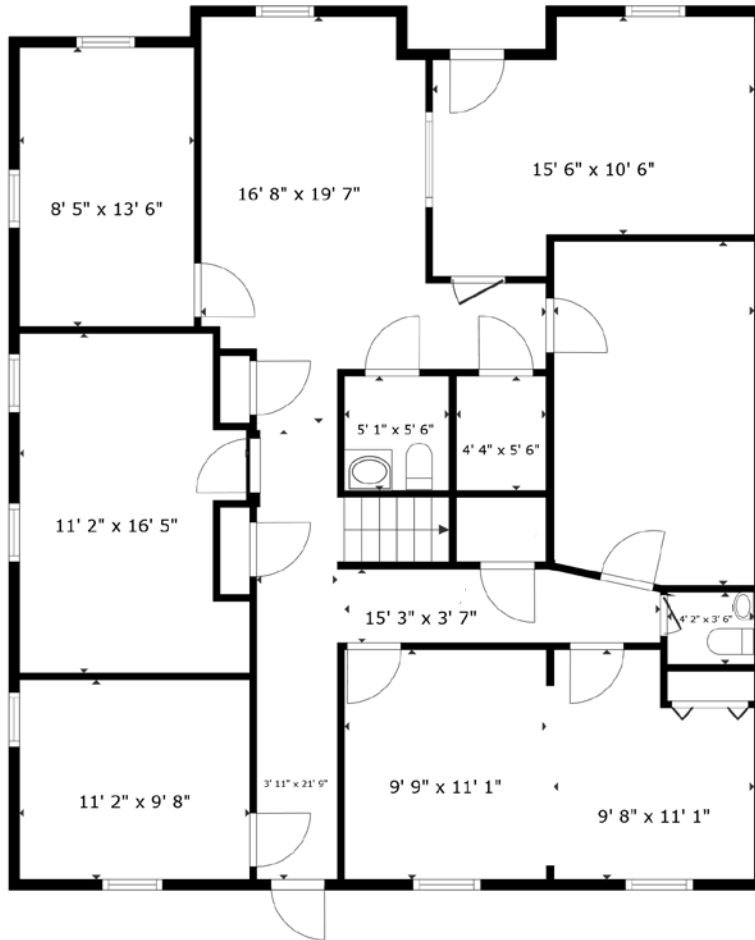
Demographics

RADIUS	1 MILE	3 MILE	5 MILE
2024 Population	13,567	132,399	297,227
Avg. Household Income	\$172,892	\$152,293	\$128,540
Median Household Income	\$101,517	\$101,417	\$80,817
Households	6,793	68,543	138,077
Daytime Employees	20,200	147,452	240,401

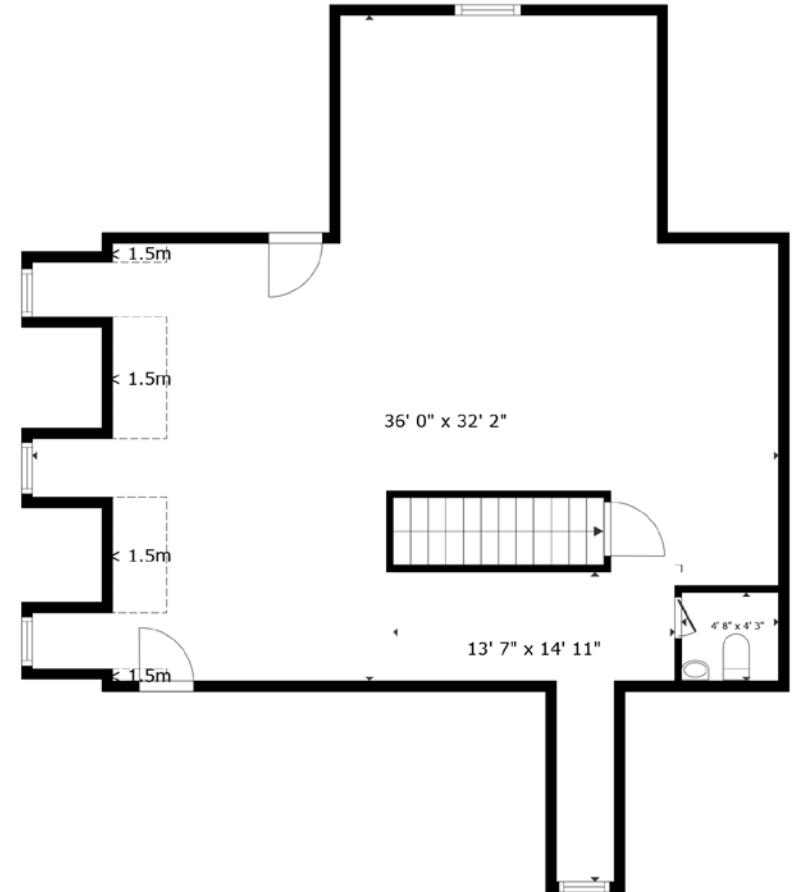
Available

+/- 2,233 SF

 Virtual Tour



Floor 1

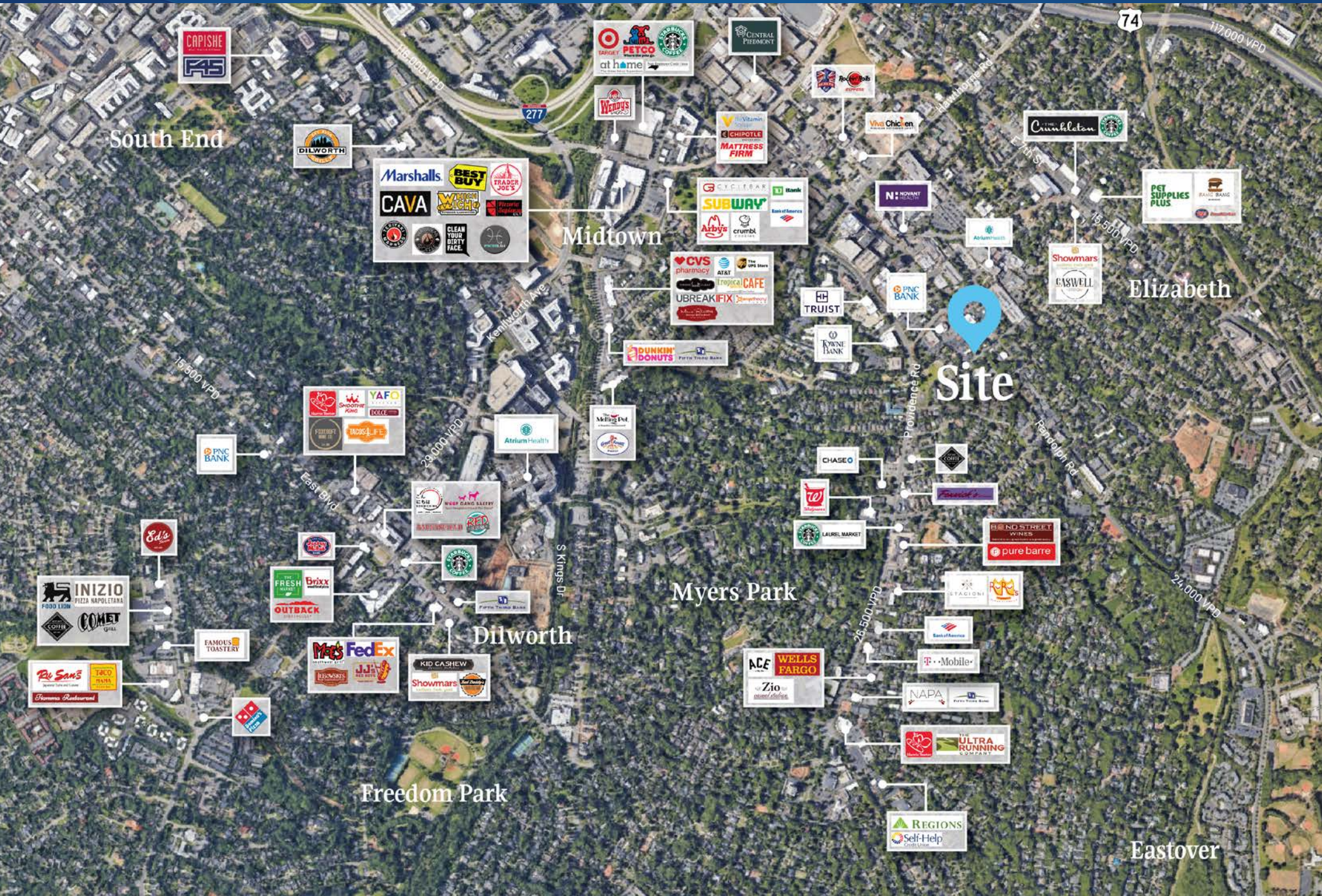


Floor 2

Interior Photos



Market Overview





Contact for Details

Tracy Efirm

(704) 373 - 9797

tracy@thenicholscompany.com



Website

www.TheNicholsCompany.com

Phone

Office (704) 373-9797

Fax (704) 373-9798

Address

1204 Central Avenue, Suite 201
Charlotte, NC 28204

This information has been obtained from sources believed to be reliable. While we do not doubt its accuracy, we have not verified it and make no guarantee, warranty or representation to independently confirm its accuracy and completeness.