



2719 Westport Road

Charlotte, NC 28208



Available for Lease

+/- 25,573 SF Industrial Building

Property Overview

2719 Westport Road

Available for Lease

2719 Westport Rd is a +/- 25,573 SF industrial property zoned ML-1, suitable for manufacturing and logistics. The building features one drive-in door, three dock-high doors, an 18-foot clear height, and a layout comprising 20% office space and 80% warehouse space. Located on Westport Rd, it offers convenient access and excellent functionality for industrial operations.

Property Details

Address 2719 Westport Rd | Charlotte, NC, 28208

Availability +/- 25,573 SF Available for Lease

Acreage +/- 2.119 AC

Use Industrial

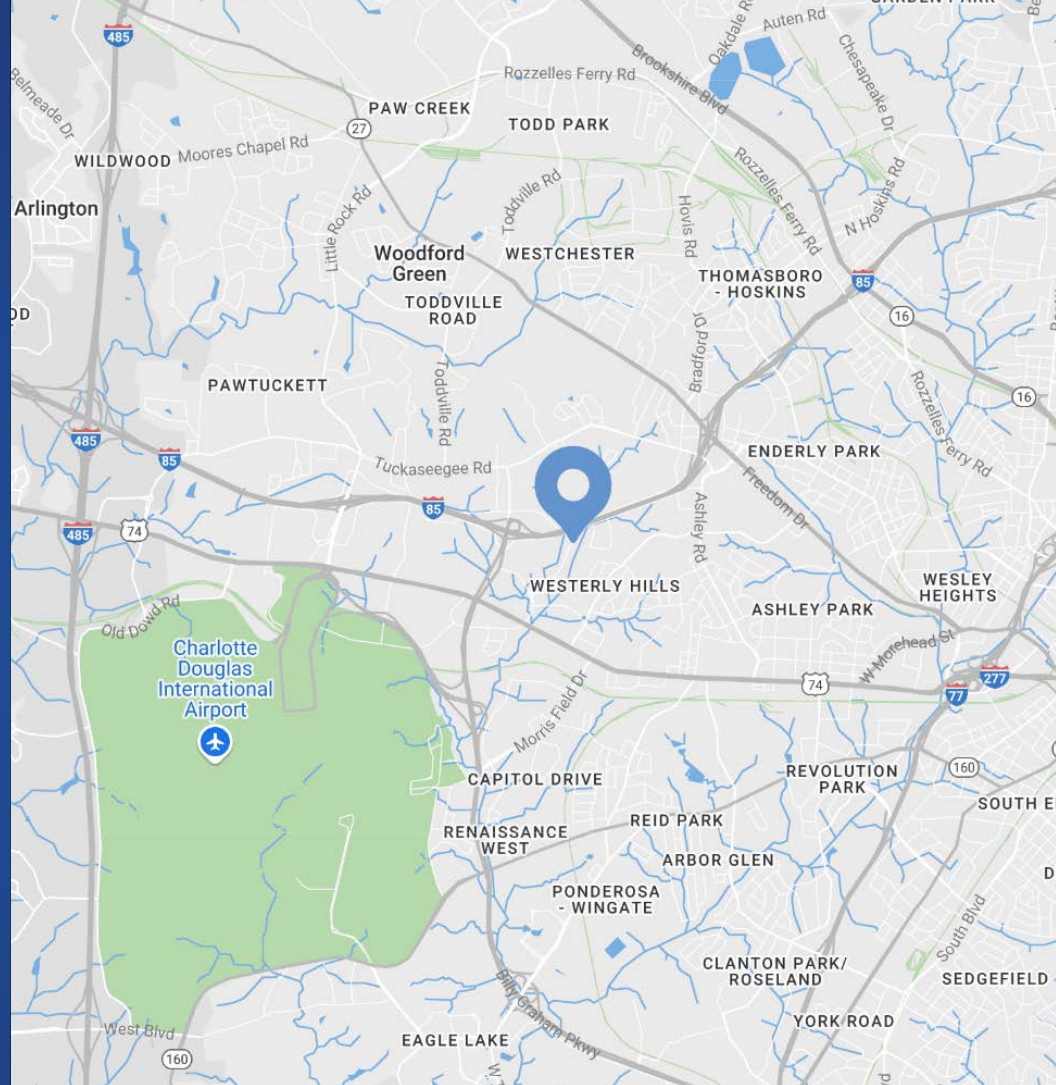
Parcel 06112305

Zoning ML-1

Traffic Counts Billy Graham Pkwy | 45,500 VPD
I-85 | 114,000 VPD

TICAM \$1.41

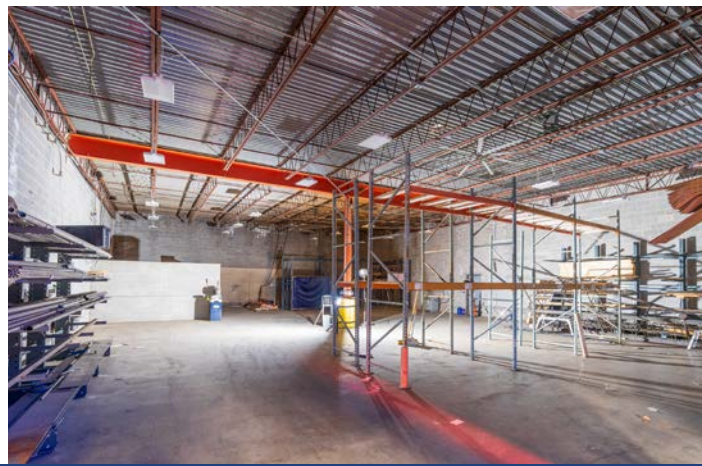
Lease Rate \$15/SF



Demographics

RADIUS	1 MILE	3 MILE	5 MILE
2024 Population	7,156	53,269	173,725
Avg. Household Income	\$72,153	\$78,501	\$110,106
Median Household Income	\$58,890	\$52,988	\$72,511
Households	2,803	21,378	79,711
Daytime Employees	9,236	39,390	181,856

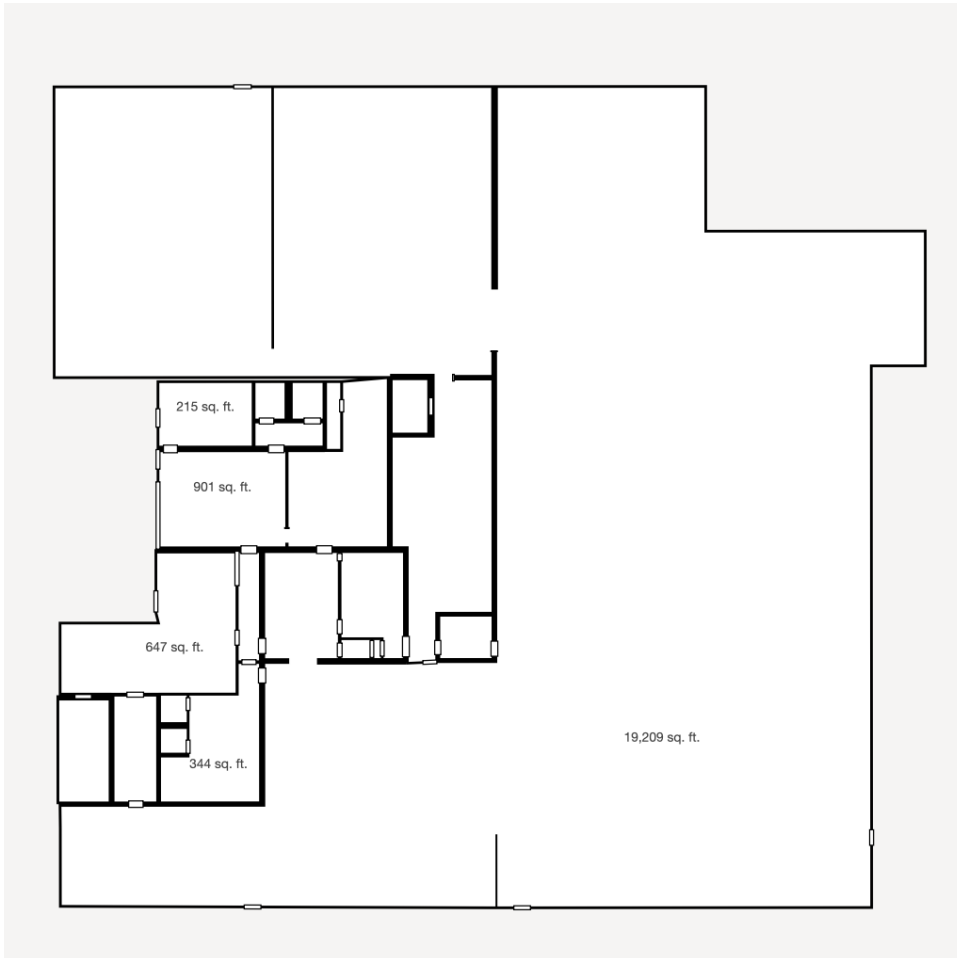
Property Photos



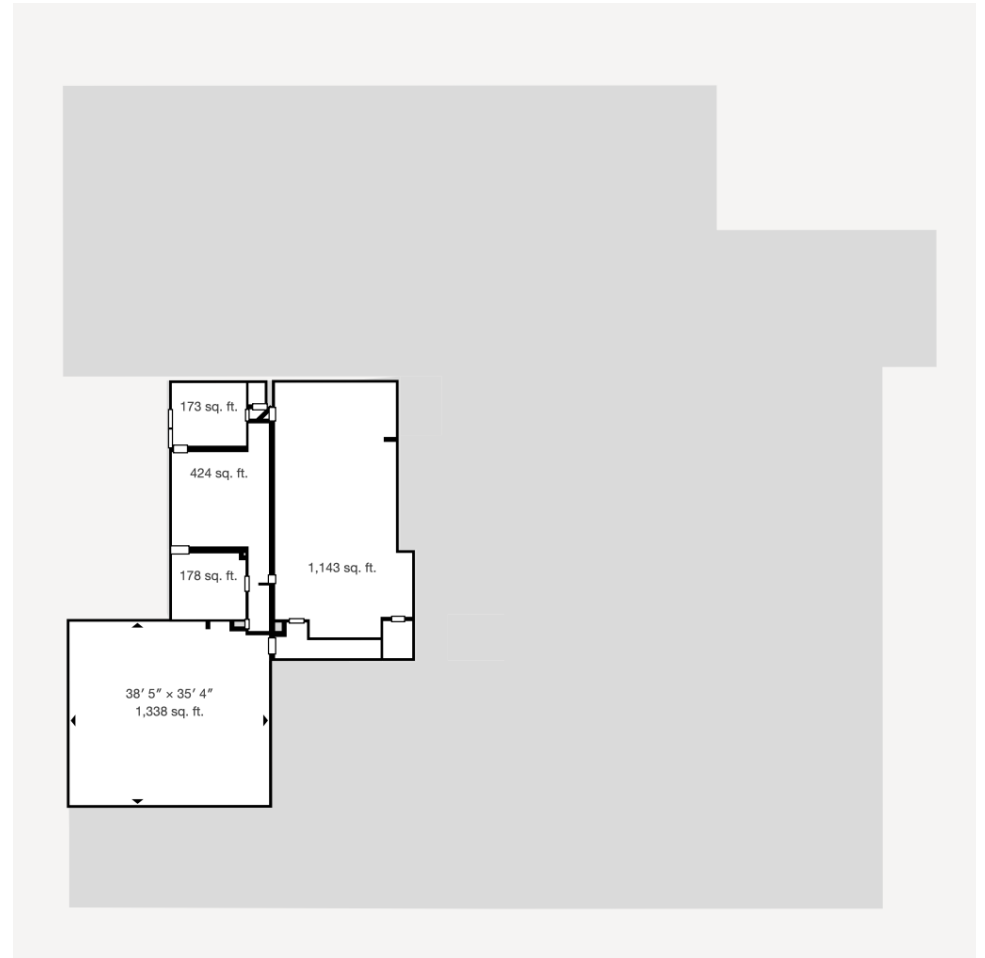
Available

+/- 25,573 SF

 Virtual Tour

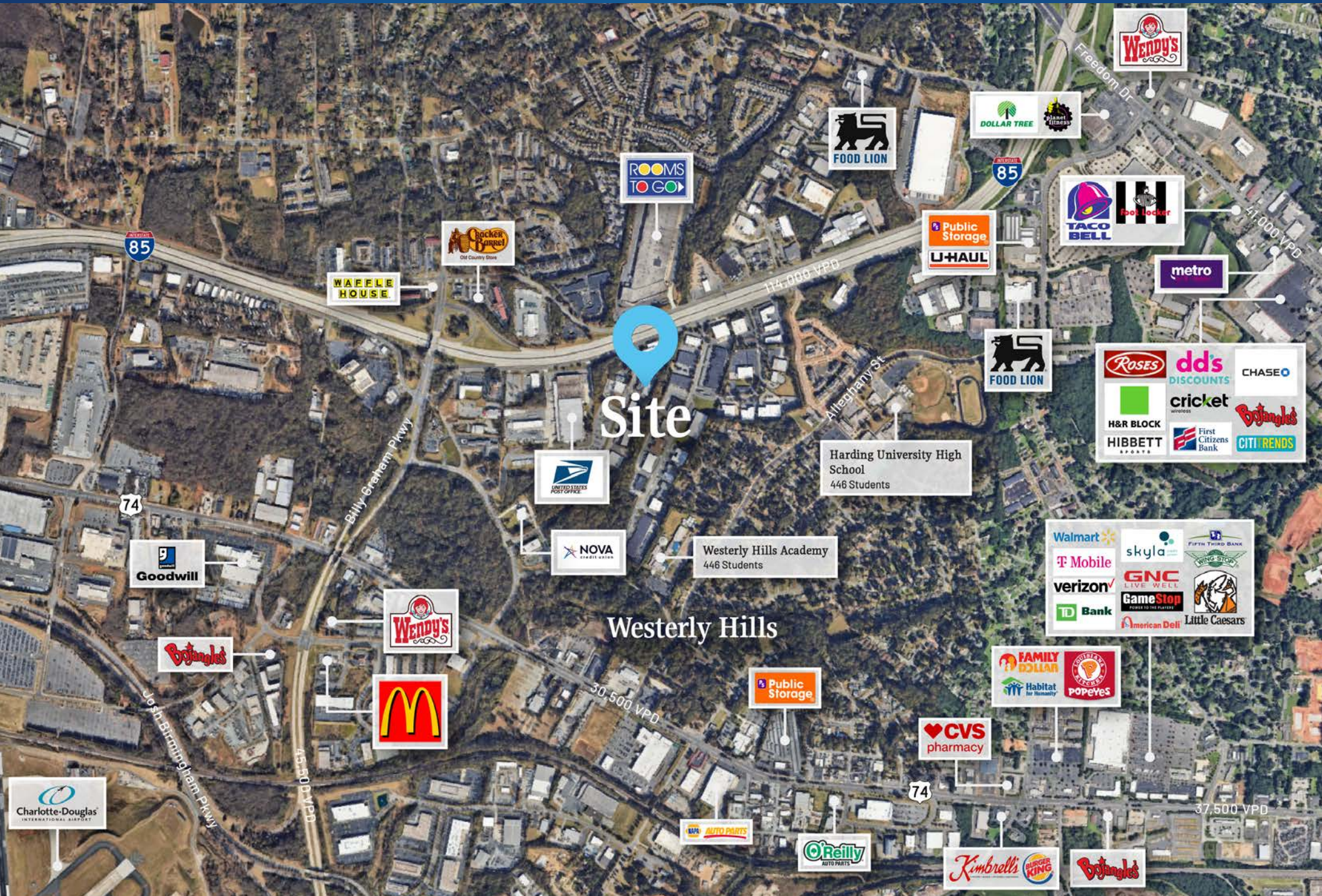


First Floor



Second Floor

Market Overview





Contact for Details

Frank Jernigan

(704) 749-5742

frank@thenicholscompany.com



Website

www.TheNicholsCompany.com

Phone

Office (704) 373-9797

Fax (704) 373-9798

Address

1204 Central Avenue, Suite 201

Charlotte, NC 28204

This information has been obtained from sources believed to be reliable. While we do not doubt its accuracy, we have not verified it and make no guarantee, warranty or representation to independently confirm its accuracy and completeness.