



2719 Westport Road

Charlotte, NC 28208



Available for Lease

+/- 27,647 SF Industrial Building

Property Overview

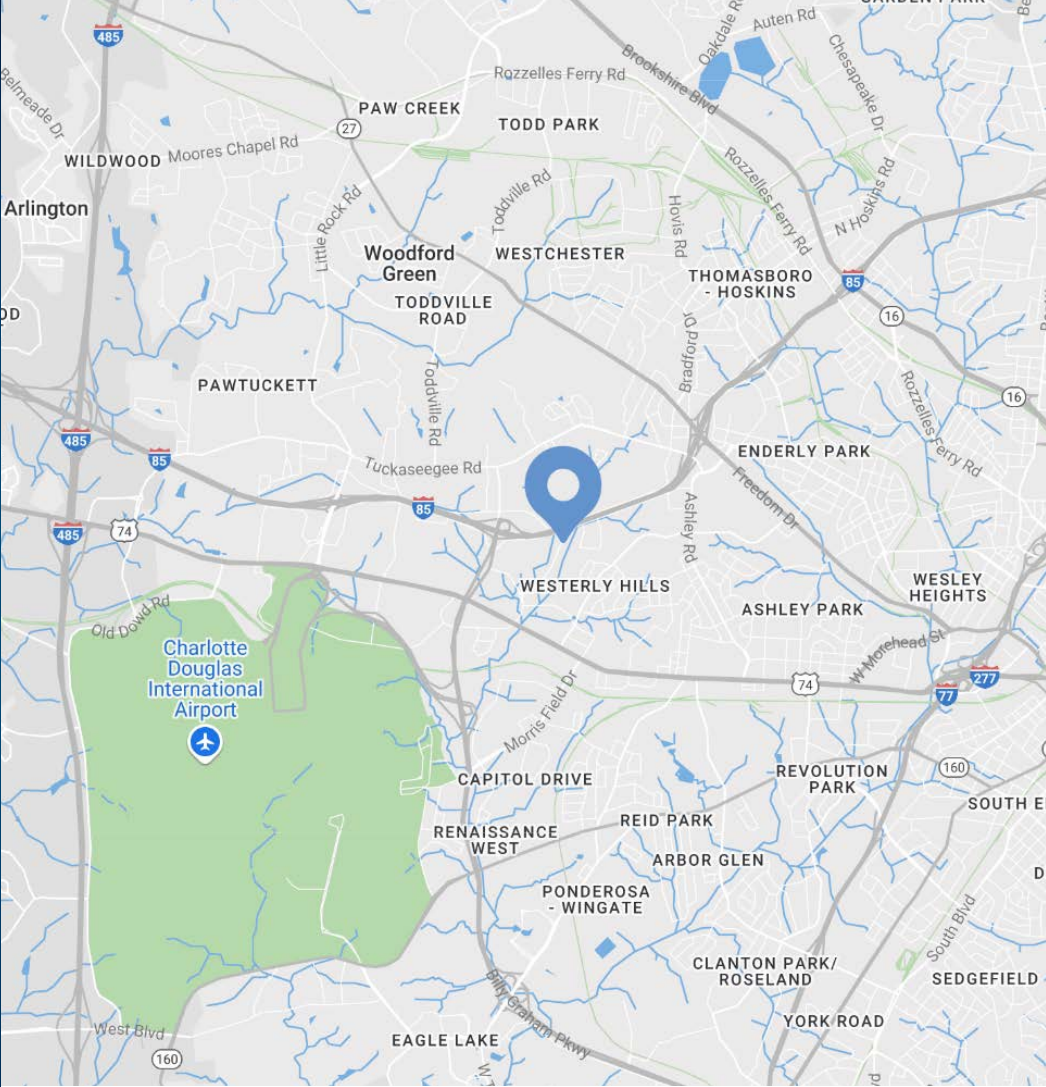
2719 Westport Road

Available for Lease

2719 Westport Rd is a +/- 27,647 SF industrial property zoned ML-1, suitable for manufacturing and logistics. The building features one drive-in door, three dock-high doors, an 18-foot clear height, and a layout comprising 20% office space and 80% warehouse space. Located on Westport Rd, it offers convenient access and excellent functionality for industrial operations.

Property Details

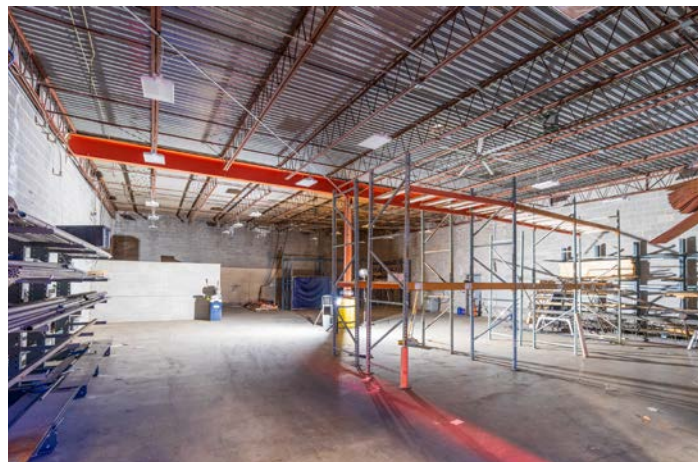
Address	2719 Westport Rd Charlotte, NC, 28208
Availability	+/- 27,647 SF Available for Lease
Acreage	+/- 2.119 AC
Use	Industrial
Parcel	06112305
Zoning	ML-1
Traffic Counts	Billy Graham Pkwy 45,500 VPD I-85 114,000 VPD
Lease Rate	Call for Leasing Details



Demographics

RADIUS	1 MILE	3 MILE	5 MILE
2024 Population	7,156	53,269	173,725
Avg. Household Income	\$72,153	\$78,501	\$110,106
Median Household Income	\$58,890	\$52,988	\$72,511
Households	2,803	21,378	79,711
Daytime Employees	9,236	39,390	181,856

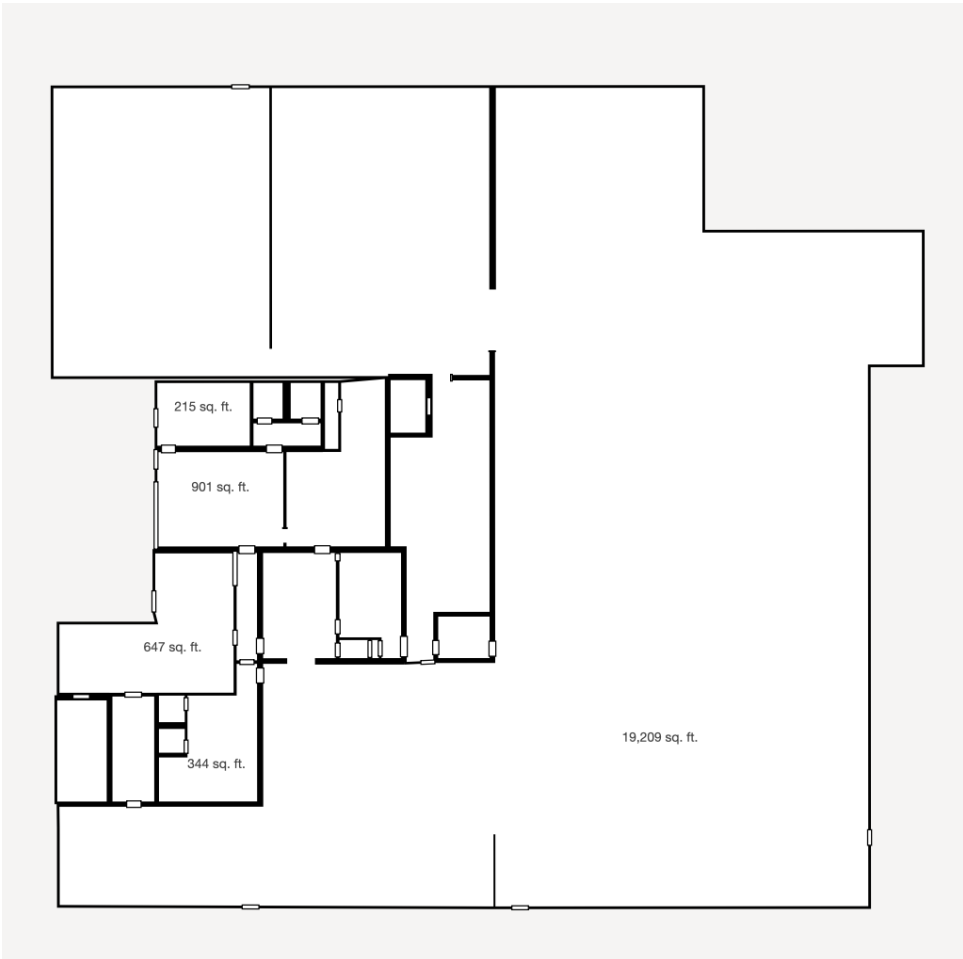
Property Photos



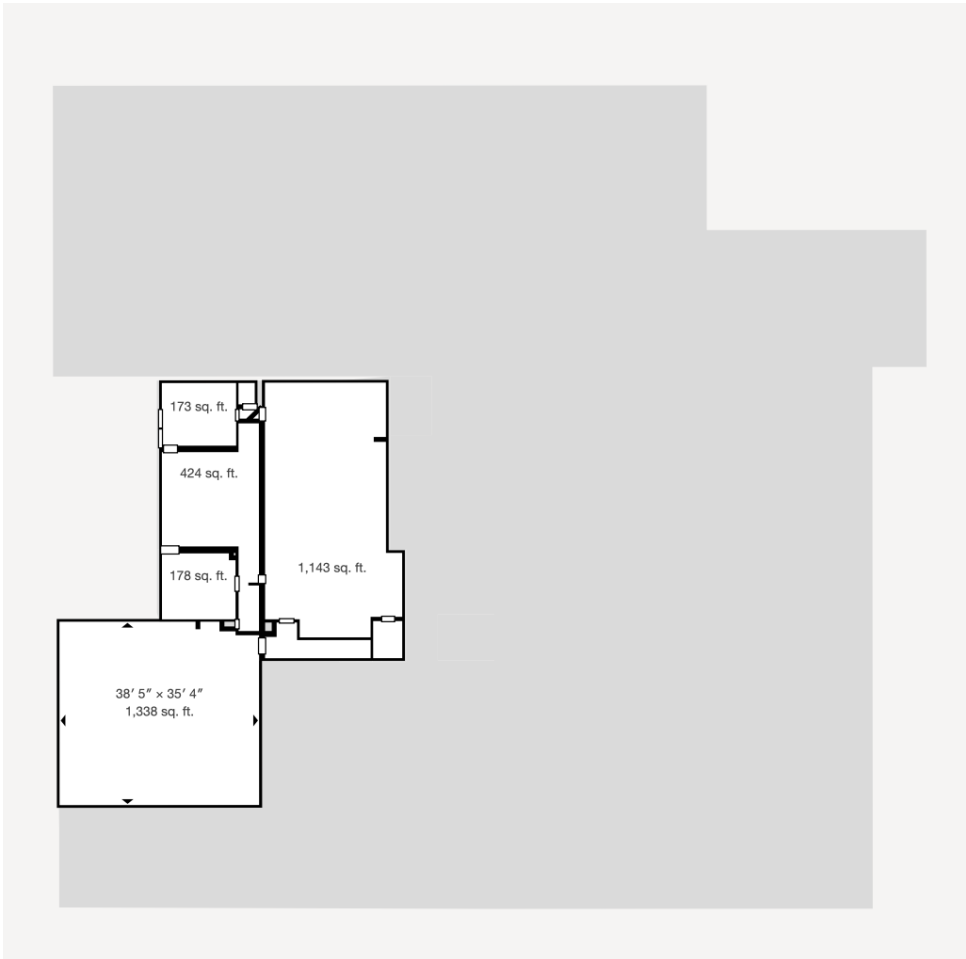
Available

+/- 27,647 SF

 Virtual Tour

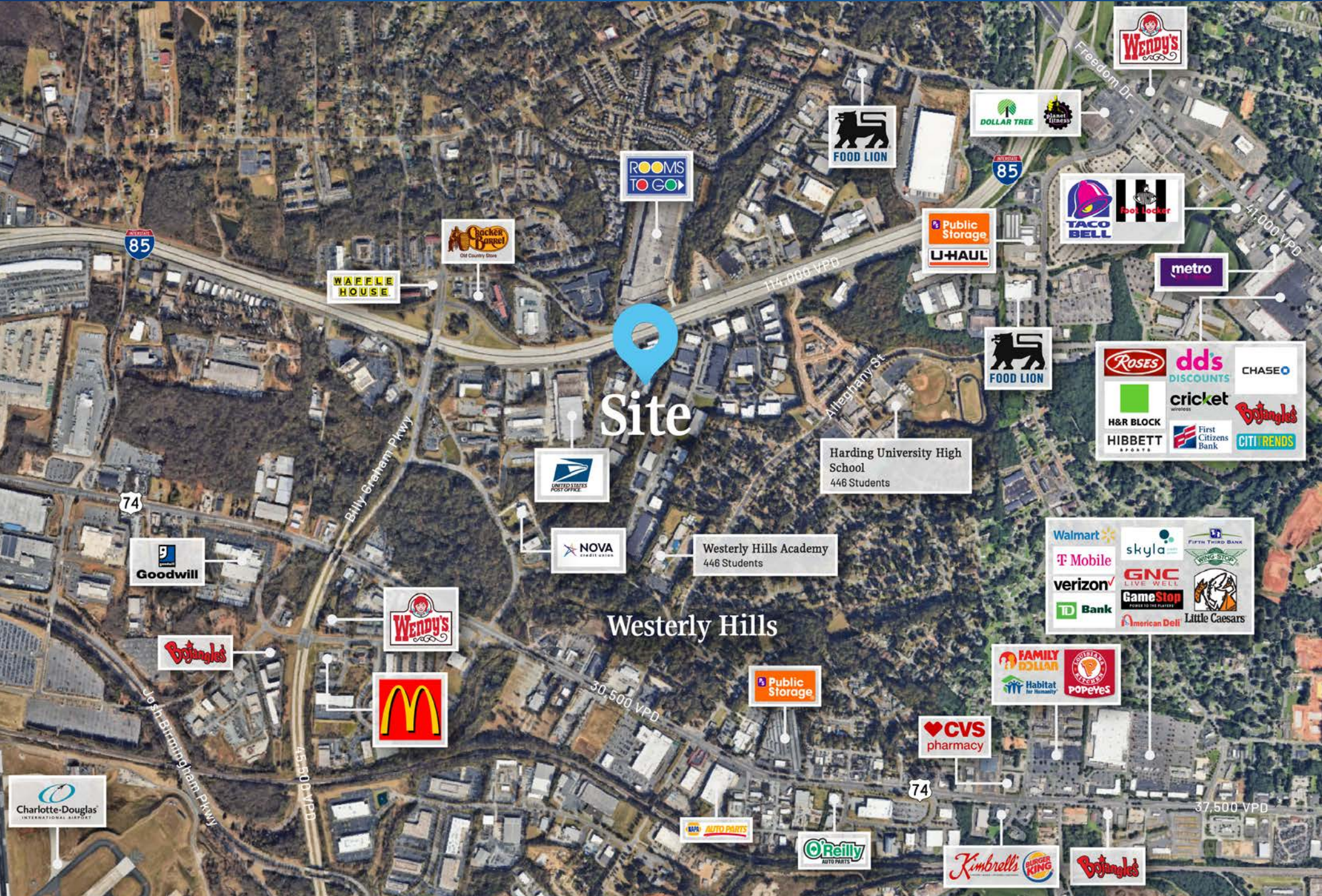


First Floor



Second Floor

Market Overview





Contact for Details

Frank Jernigan

(704) 749-5742

frank@thenicholscompany.com



Website

www.TheNicholsCompany.com

Phone

Office (704) 373-9797

Fax (704) 373-9798

Address

1204 Central Avenue, Suite 201

Charlotte, NC 28204

This information has been obtained from sources believed to be reliable. While we do not doubt its accuracy, we have not verified it and make no guarantee, warranty or representation to independently confirm its accuracy and completeness.