



2128 McClintock Rd

Charlotte, North Carolina, 28205



Available for Lease

+/- 1,529 SF Retail/Office/Medical in Plaza Midwood

Property Overview

2128 McClintock Rd Available for Lease

± 1,529 SF Available for lease in the heart of Plaza Midwood. The site is within walking distance of many of Plaza Midwood's iconic retail destinations and popular restaurants. Surrounded by multi-family and mixed-use developments, this site presents an excellent opportunity to enter one of Charlotte's most dynamic neighborhoods. This move-in-ready space offers ample parking and is ideal for retail, office, or medical office use.

Property Details

Address 2128 McClintock Rd | Charlotte, NC 28205

Availability +/- 1,529 SF Available for Lease
Available May 1, 2025

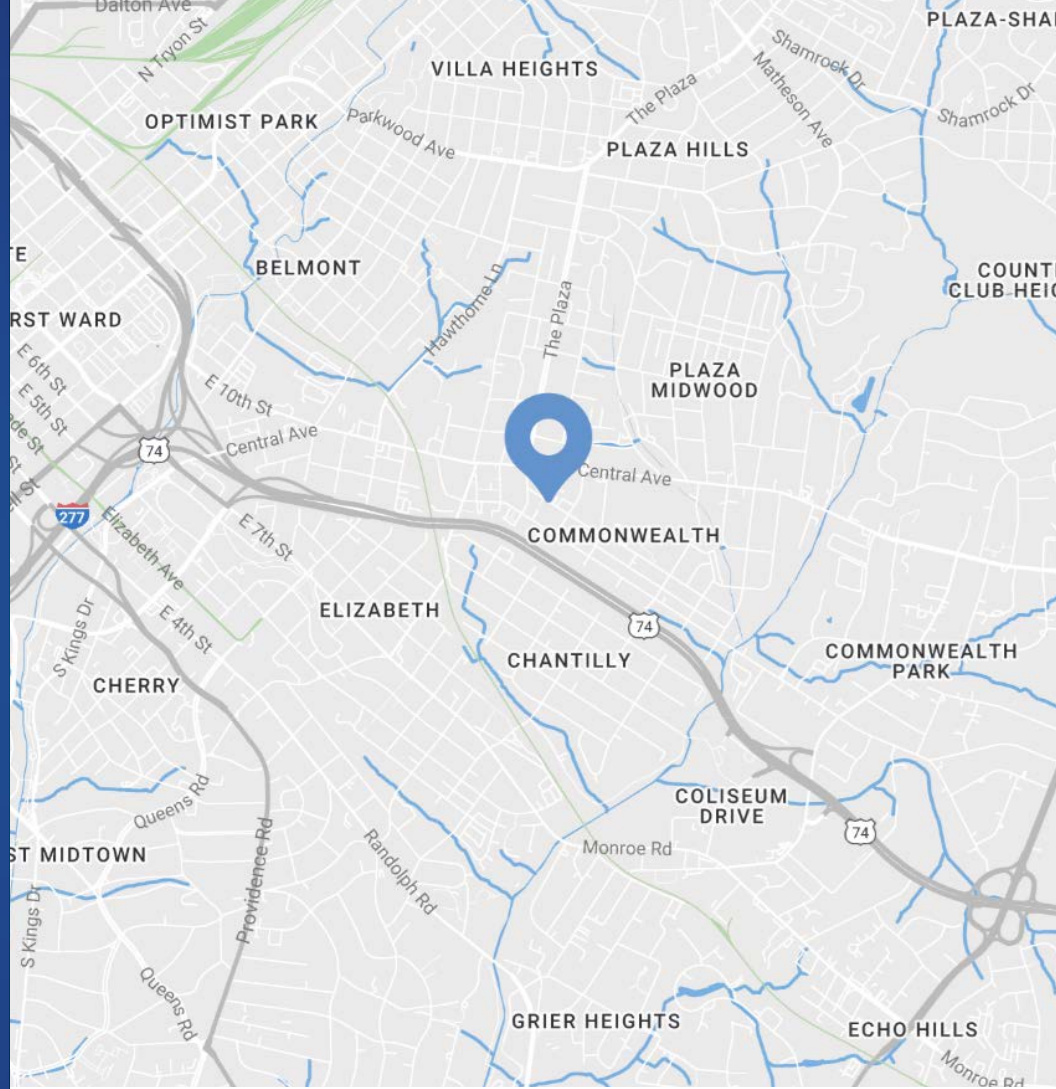
Use Retail/Office/Medical

Zoning NC

Parcels 12901215

Traffic Counts Central Ave | 21,500 VPD
Commonwealth | 6,439 VPD

Lease Rate Call for Leasing Details



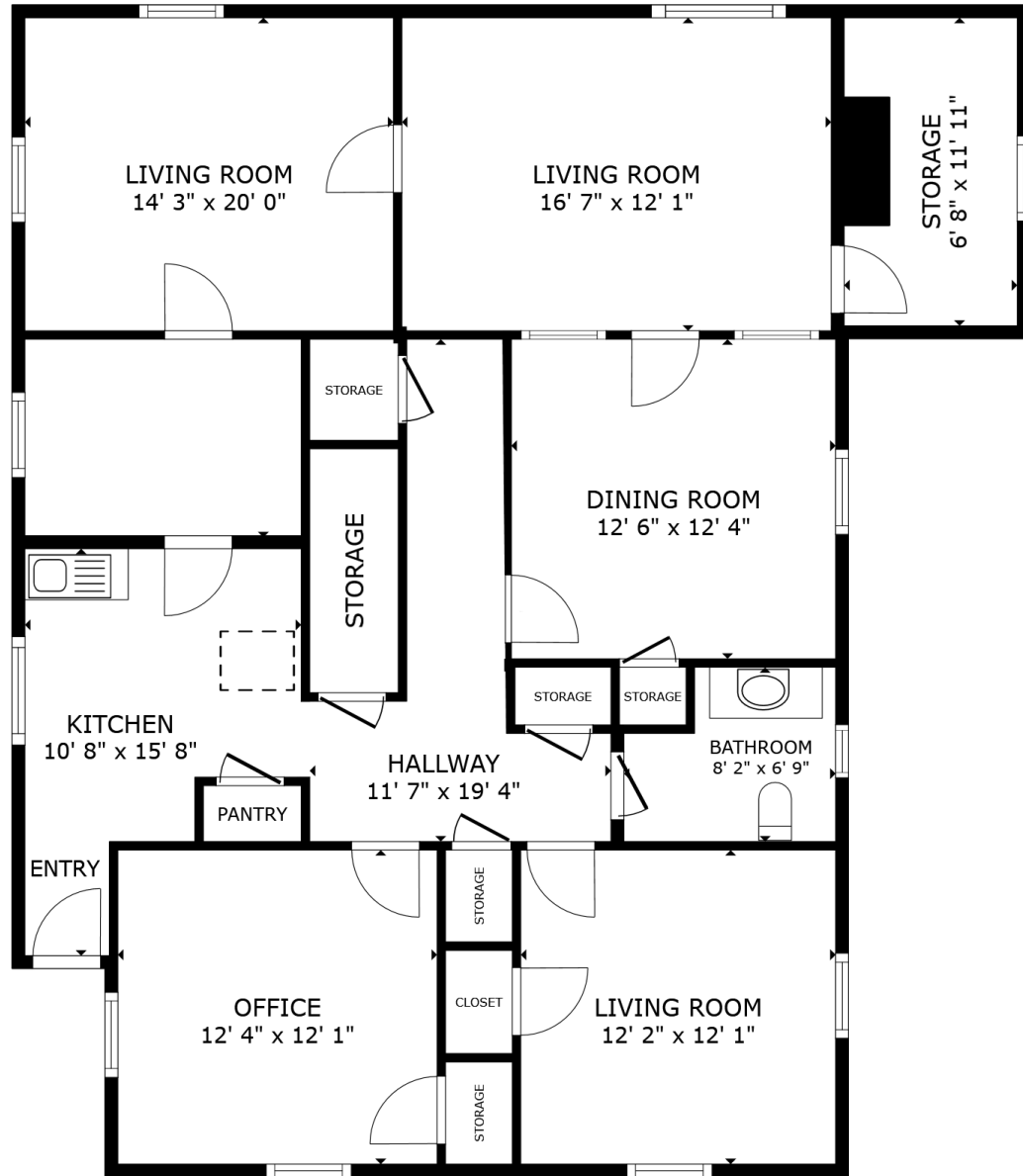
Demographics

RADIUS	1 MILE	3 MILE	5 MILE
2024 Population	16,162	132,633	302,067
Avg. Household Income	\$142,588	\$136,753	\$122,336
Median Household Income	\$97,538	\$87,801	\$75,904
Households	8,655	66,239	138,089
Daytime Employees	12,062	139,064	229,605

Available

+/- 1,529 SF

 Virtual Tour



Site Overview



 E. Independence Blvd (Hwy 74)
117,000 VPD

74

UNDERCURRENT
COFFEE

LEGION
BREWING
PLAZA MIDWOOD

Diamond

CM
THE COMMON MARKET

SUPPERLAND

THOMAS
STREET TAVERN

Plaza
Midwood

USPS

WELLS
FARGO

Harris Teeter

COMMONWEALTH
Community • Commerce • Convenience

12 AC Mixed-Use Redevelopment
Retail & Restaurants | 383 Apartment Units
Boutique Hotel | 400,000+ SF Office Space
Green Space

Swooze
YAFO
RESTAURANTS

DILWORTH

CVS
pharmacy

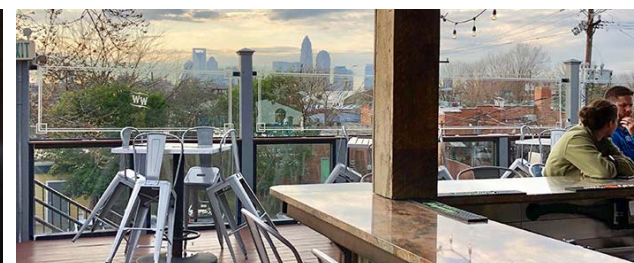
WOOLY GANG BAKERY

Central Ave
21,500 VPD

McClintock Rd

Market Overview






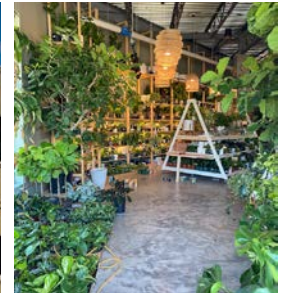


Plaza Midwood

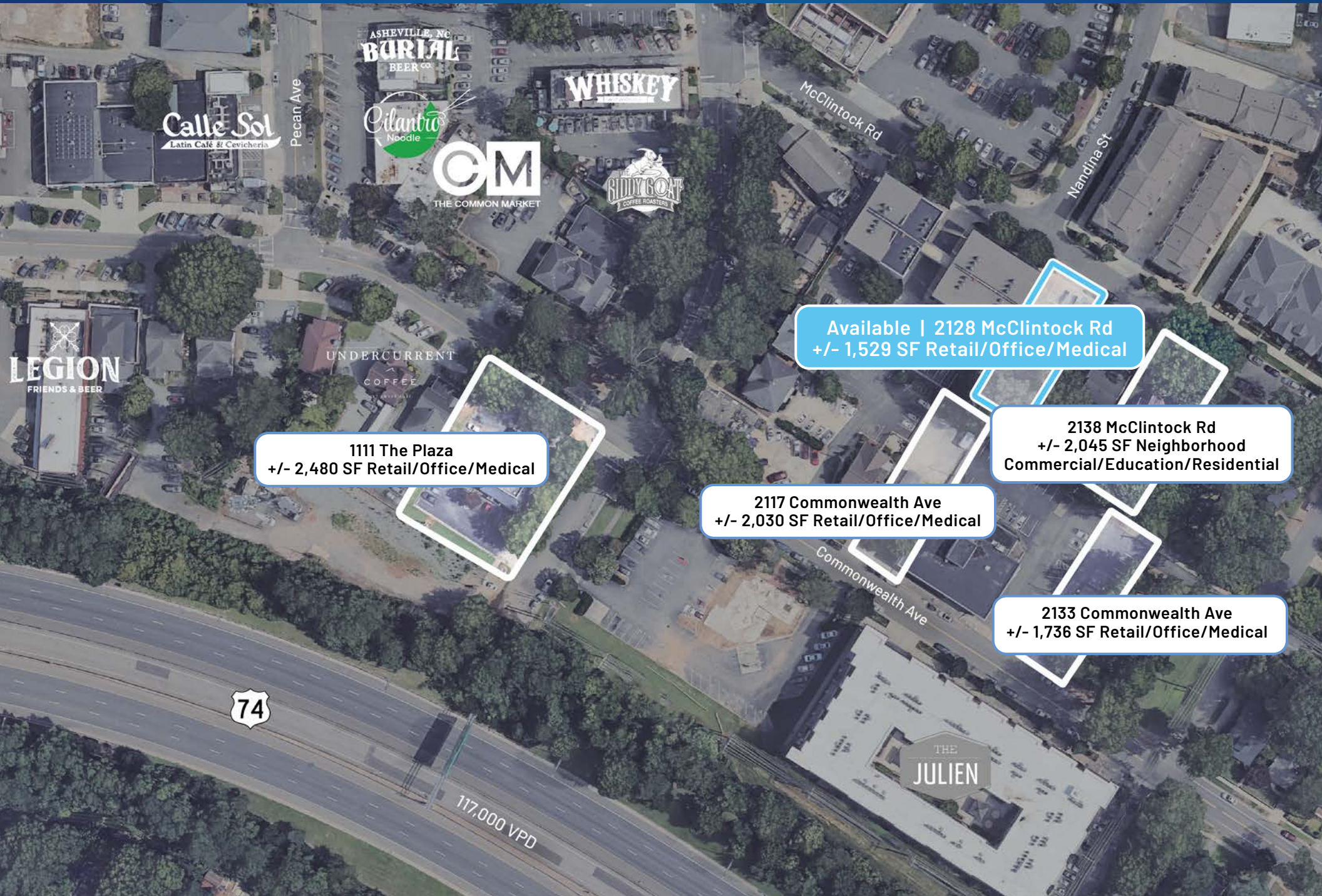
The go-to spot to meet, mingle, and unwind

Just a 1 mile cruise along Central Avenue from Uptown Charlotte will put you in a place where fashion, food, and art rule! Plaza Midwood is one of Charlotte's most unique, preeminent urban core neighborhoods. The neighborhood boasts a mixture of unique restaurants, art galleries, locally owned shops, popular bars, and live music venues. Recent years have witnessed its resurgence as a vibrant, highly sought after neighborhood with numerous upcoming and completed developments.

 2.5 Mi Distance to Uptown	 153,996 Daytime Population (3 Mile)	 56 Walkability Score	 21,500 Vehicles per Day on Central Ave
----------------------------------------------------------------------------------------------------------------------------	--------------------------------------------------------------------------------------------------------------------------------------	-------------------------------------------------------------------------------------------------------------------------	-------------------------------------------------------------------------------------------------------------------------------------------



Available Properties Nearby



Calle Sol
Latin Café & Cevicheria

ASHEVILLE, NC
BURLAL
BEER CO.

Cilantro
Noodle

WHISKEY

CM
THE COMMON MARKET

SIDDY GOAT
COFFEE ROASTERS

UNDERCURRENT
COFFEE

LEGION
FRIENDS & BEER

THE
JULIEN

74

117,000 VPD

Available | 2128 McClintock Rd
+/- 1,529 SF Retail/Office/Medical

1111 The Plaza
+/- 2,480 SF Retail/Office/Medical

2117 Commonwealth Ave
+/- 2,030 SF Retail/Office/Medical

2138 McClintock Rd
+/- 2,045 SF Neighborhood
Commercial/Education/Residential

2133 Commonwealth Ave
+/- 1,736 SF Retail/Office/Medical



Contact for Details

Taylor Barnes

(704) 274-1224

taylor@thenicholscompany.com

John Nichols

(704) 373-9797

jnichols@thenicholscompany.com



Website

www.TheNicholsCompany.com

Phone

Office (704) 373-9797

Fax (704) 373-9798

Address

1204 Central Avenue, Suite 201

Charlotte, NC 28204

This information has been obtained from sources believed to be reliable. While we do not doubt its accuracy, we have not verified it and make no guarantee, warranty or representation to independently confirm its accuracy and completeness.