



# 212 Greystone Road

Charlotte, North Carolina, 28209



## Available for Lease

+/- 4,560 SF Retail Building in South End



Property Overview

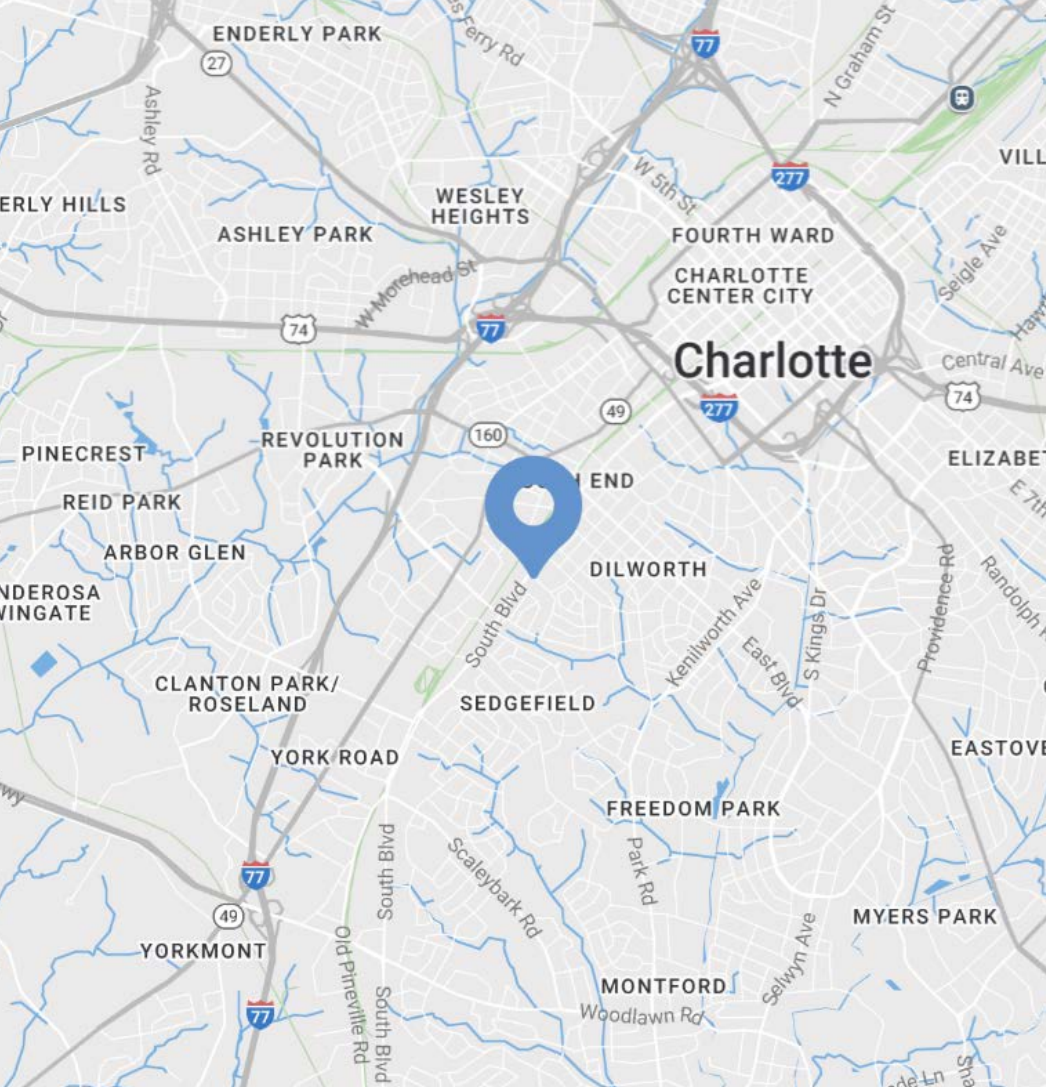
# 212 Greystone Road

## Available for Lease

Opportunity to lease +/- 4,560 SF at 212 Greystone Road, located directly across from The Platform in the heart of South End – Charlotte’s most vibrant and fast-growing urban district. Situated just off South Blvd and within walking distance of the LYNX Blue Line and Rail Trail, this highly visible location offers immediate access to a dense mix of retail, dining, and residential developments. Ideal for retail, office, or medical office users seeking exposure in one of the city’s premier live-work-play environments.

Property Details

Address	212 Greystone Rd   Charlotte, NC, 28209
Availability	+/- 4,560 SF Available for Lease
Parcel ID	14705123
Use	Retail
Zoning	TOD-NC
Parking	Ample Parking
Traffic Counts	South Blvd   20,000 VPD
Lease Rate	Call for Leasing Details



Demographics

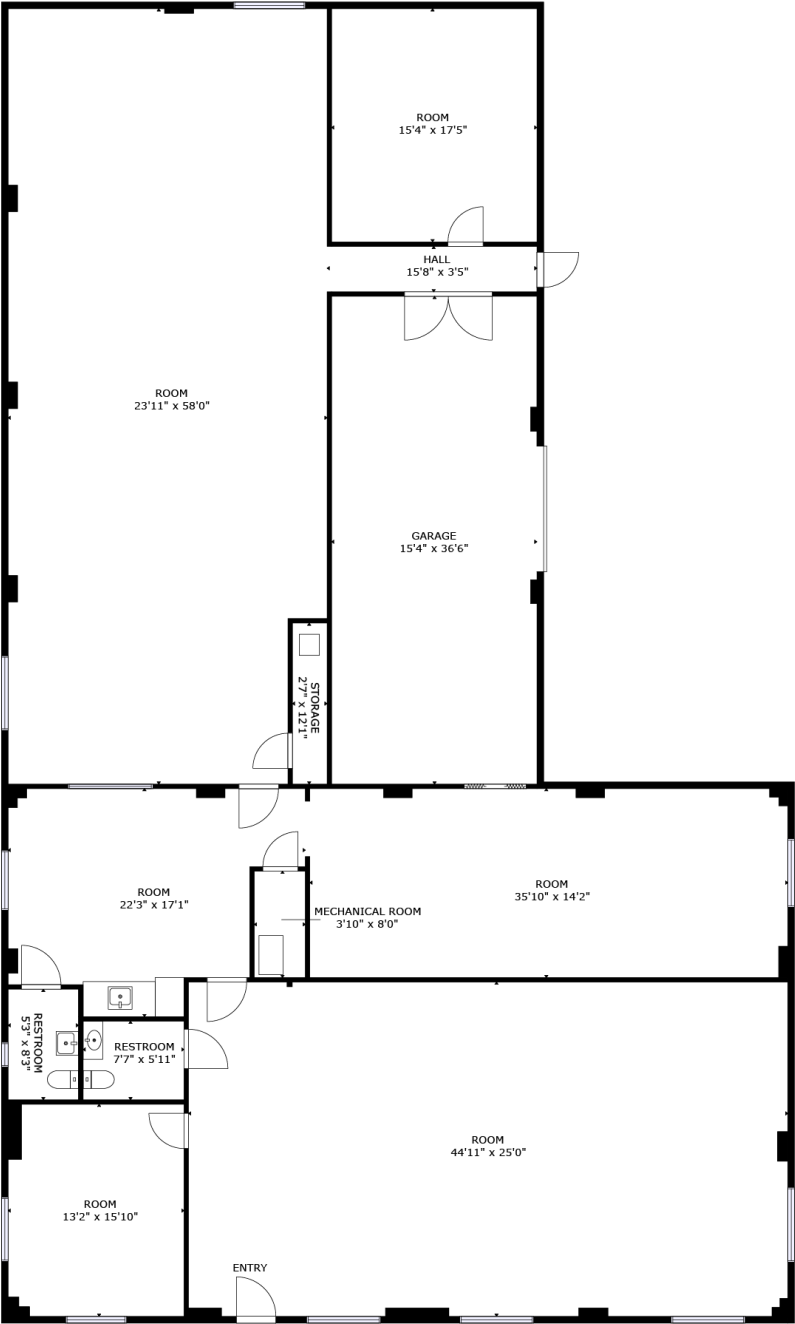
RADIUS	1 MILE	3 MILE	5 MILE
2024 Population	15,989	112,080	258,965
Avg. Household Income	\$141,778	\$144,935	\$133,600
Median Household Income	\$100,650	\$95,543	\$85,082
Households	9,192	57,996	122,572
Daytime Employees	11,892	152,982	259,632

Available

+/- 4,560 SF

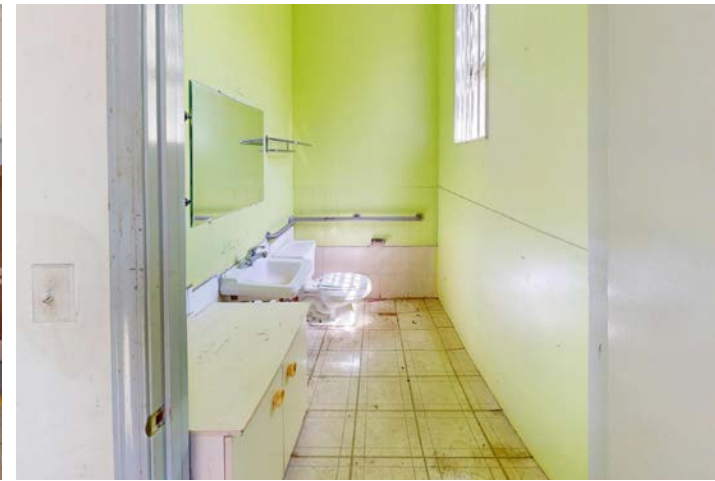


Virtual Tour





## Interior Photos





# South End

Charlotte, NC

Historic South End, often referred to as South End, is immediately south of Uptown Charlotte. It's where retro mixes with contemporary, historical bumps up against trendy, and art intersects commerce. Result: a pulsing, vibrant neighborhood in the city with meteoric growth. It doesn't hurt being close to Uptown, the airport, major highways, and smack dab on the LYNX Light Rail line. Boasting some of the city's most popular restaurants, bars, breweries and attractions, South End is the fastest growing neighborhood in Charlotte. South End recently landed new headquarter locations for nationally recognized brands such as Lowe's, Lending Tree and Dimensional Fund Advisors. With Charlotte consistently ranking at the top of lists such as "Millennial Moving Destinations", "Destinations for One-Way Moving" and "Fastest Growing Economies" the trend of strong population growth and rent growth are projected to continue.



## South End Development Report



# SOUTH END

## \$3.4B

Commercial Development

## 371K SF

Retail Planned/Under Construction

## 2.2MM SF

Office Planned/Under Construction

## 3,802

Residential Units Planned/Under Construction

## 380

Hotel Rooms Planned/Under Construction



## Market Overview







Contact for Details

**Frank Jernigan**

(704) 749-5742

frank@thenicholscompany.com



**Website**

[www.TheNicholsCompany.com](http://www.TheNicholsCompany.com)

**Phone**

Office (704) 373-9797

Fax (704) 373-9798

**Address**

1204 Central Avenue, Suite 201

Charlotte, NC 28204

This information has been obtained from sources believed to be reliable. While we do not doubt its accuracy, we have not verified it and make no guarantee, warranty or representation to independently confirm its accuracy and completeness.